

Population Health Management & Service Innovation FOR CONSUMERS WITH BEHAVIORAL DISORDERS

Volume 3 uncovers the latest trends in health plan innovation, accessing insights from a comprehensive national payer survey. Discover how technology, digital health, and social determinants of health are shaping the future of care.

Comprehensive Managed Care Continues To Grow¹

The popularity of medicaid managed care models continues to increase as well as the populations enrolled.

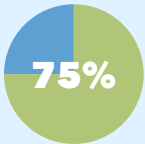


Total Number Of Medicaid Beneficiaries, Including Expansion Population

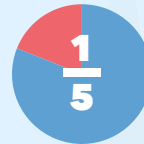
Growth Of Managed Care As A Health Plan Business Model, 2017-2022¹
Medicaid Enrollment By Coverage Type*

	2017		2020		2022		% Change (2017-2022)
	Enrollment	%	Enrollment	%	Enrollment	%	
Total Number Of Medicaid Beneficiaries, Including Expansion Population	87,342,468	100%	86,975,312	100%	95,135,042	100%	9% ↑
Fee-For-Service (FFS)	16,334,072	19%	11,931,880	14%	17,784,506	19%	9% ↑
Comprehensive Managed Care	65,172,524	75%	67,824,128	78%	73,335,808	77%	13% ↑
Primary Care Case Management (PCCM)	5,835,872	7%	7,219,304	8%	4,014,728	4%	-31% ↓

*Enrollment totals may vary, due to inconsistency in state and Center for Medicare & Medicaid Services (CMS) reported data. The programs listed do not encompass every program offered by Medicaid.



Over 75% Of Medicaid beneficiaries were served in a **managed delivery system**.¹

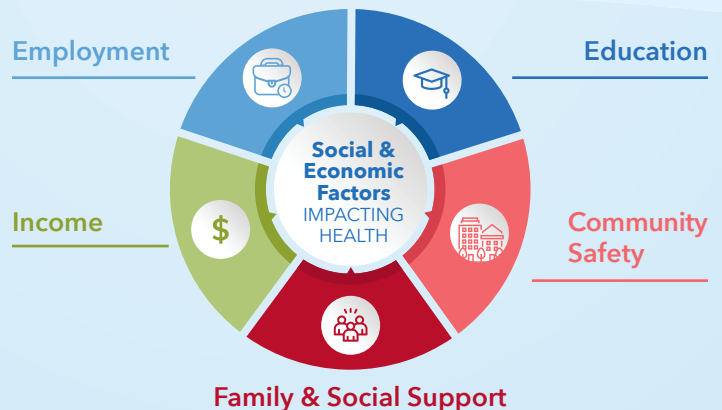


However, **FFS** healthcare programs still account for one in five (19%) of Medicaid recipient services.¹

Health Plan Strategies For Social Determinants Of Health (SDOH) & Care Coordination²

Changes in medicaid policies have granted health plans greater flexibility to address SDOH by investing a portion of their payments in short-term housing and rental assistance.

Common health plan strategies to address SDOH require providers to screen for social needs and including requirements or incentives for quality metrics associated with SDOH.



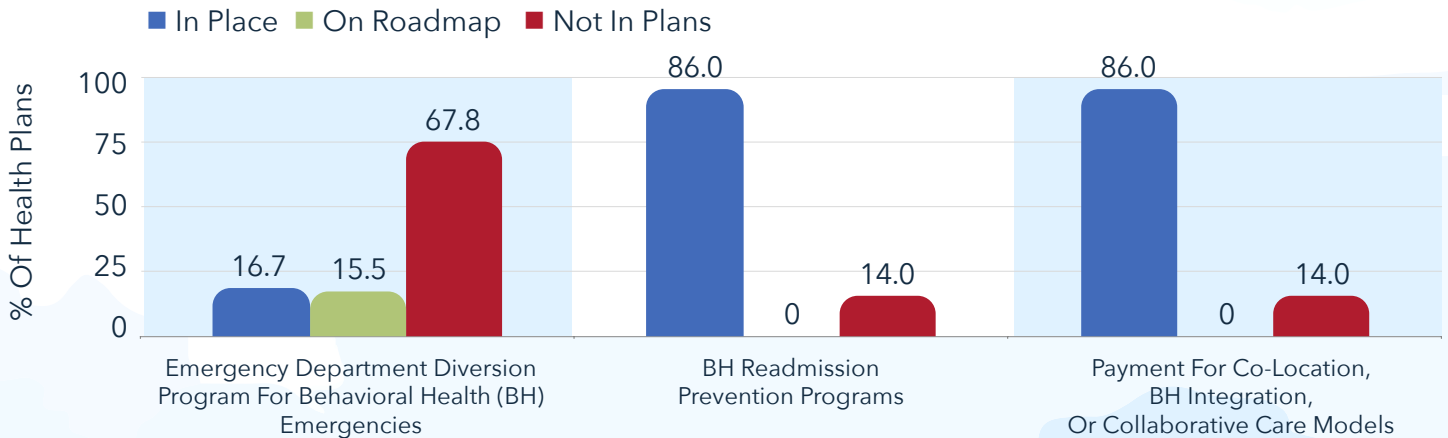
References:

1. OPEN MINDS. (2023, May 11). An Update On State Medicaid Enrollment By Consumer Type & Coverage Type: An OPEN MINDS Market Intelligence Report. <https://openminds.com/intelligence-report/an-update-on-state-medicaid-enrollment-by-consumer-type-coverage-type-an-open-minds-market-intelligence-report/>
2. University of Wisconsin Population Health Institute. "County Health Rankings Model." County Health Rankings & Roadmaps, 2014
3. OPEN MINDS. (2023). OPEN MINDS Market Intelligence Payers Proprietary Database.

Health Plans Show Support For A Variety Of Care Coordination Initiatives³

Most health plans have implemented programs and services targeting complex members, including initiatives to reduce hospital readmissions for behavioral health and to expand integration of behavioral health and primary care.

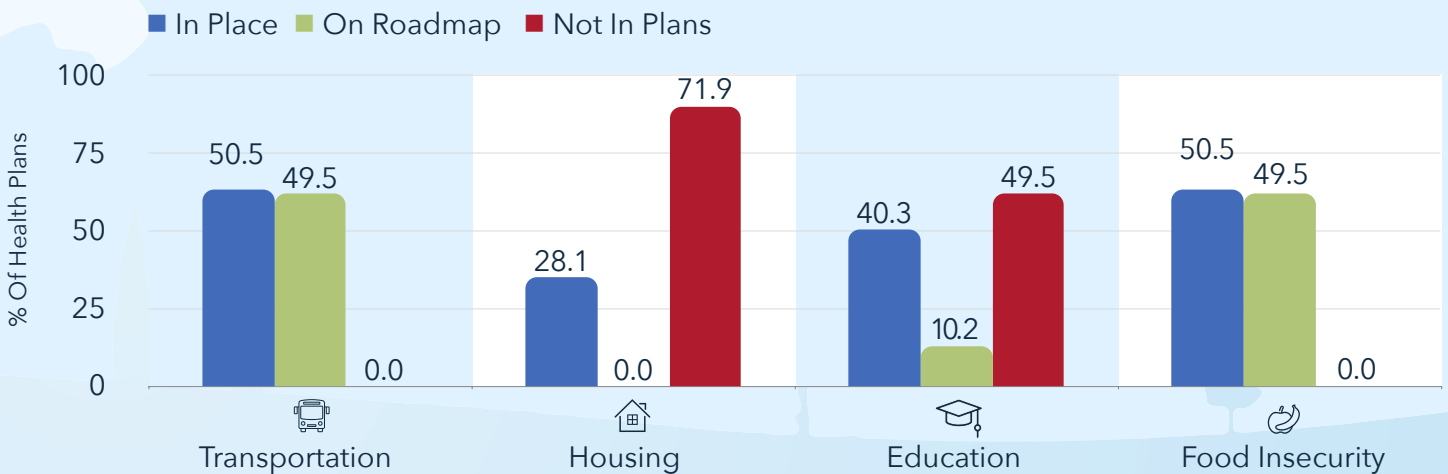
Coordination Of Care Strategies For Complex Members - All Plans, 2023³



Health Plans Show A Focus On Non-Medical Services & Supports That Affect Health Outcomes Like Food Insecurity & Transportation.³

Health plans are focusing resources on non-medical services and supports that affect health outcomes, including food insecurity and transportation. A small number are also exploring housing programs as a strategy.

Utilization Of Social Determinants Of Health Strategies - All Plans, 2023³



Scan The QR Code To View The Entire Guide:

➔ **Volume III: Health Plan Population**

Also Discover Volumes I & II Online:

➔ **Volume I: The National Behavioral Health Landscape**

➔ **Volume II: The State Behavioral Health Landscape**

References:

1. OPEN MINDS. (2023, May 11). An Update On State Medicaid Enrollment By Consumer Type & Coverage Type: An OPEN MINDS Market Intelligence Report. <https://openminds.com/intelligence-report/an-update-on-state-medicaid-enrollment-by-consumer-type-coverage-type-an-open-minds-market-intelligence-report/>
2. University of Wisconsin Population Health Institute. "County Health Rankings Model." County Health Rankings & Roadmaps, 2014
3. OPEN MINDS. (2023). OPEN MINDS Market Intelligence Payers Proprietary Database.