



OPEN MINDS

Illinois Health & Human Services Market Profile: 2024



Illinois Health & Human Services Market Profile Overview

A. [Executive Summary](#)

1. Health Care Coverage by Payer
2. Medicaid Care Coordination Initiatives
3. Behavioral Health Safety-Net System Overview

B. [Health Financing System Overview](#)

1. Population Demographics
2. Population Centers
3. Population Distribution By Payer
4. Largest Health Plans
5. Health Insurance Marketplace
6. Accountable Care Organizations

C. [Medicaid Administration, Governance & Operations](#)

1. Medicaid Governance
2. Medicaid Program Spending
3. Medicaid Expansion Status
4. Medicaid Program Benefits

D. [Medicaid Financing & Service Delivery System](#)

1. Medicaid Financing & Service Delivery System
2. Medicaid FFS Program
3. Medicaid Managed Care Program
4. Medicaid Program: Care Coordination Initiatives
5. Medicaid Program Waivers
6. Medicaid Program: New Initiatives

E. [Medicare Financing & Service Delivery System](#)

1. Medicare Financing & Service Delivery System
2. Medicare System: Overview
3. Medicare ACOs
4. Medicare System: New Initiatives

F. [Dual Eligible Financing & Service Delivery System](#)

1. Dual Eligible Medicaid Financing & Service Delivery System
2. Largest Dual Eligible Health Plans By Estimated SMI Enrollment
3. Dual Eligible Medicaid Financing & Delivery System: Overview
4. Dual Eligible Medicaid Financing & Delivery System: New Initiatives

G. [Long-Term Services & Supports System](#)

1. LTSS Financing & Service Delivery System
2. LTSS Medicaid Financing & Delivery System: Overview
3. LTSS Health Plan Characteristics
4. LTSS Program Benefits
5. LTSS Medicaid Financing & Delivery System: New Initiatives

H. [State Behavioral Health Administration & Finance System](#)

1. Public Behavioral Health System Governance
2. Public Behavioral Health System Spending
3. State Psychiatric Institutions
4. Behavioral Health Safety-Net Delivery System
5. Behavioral Health System: New Initiatives

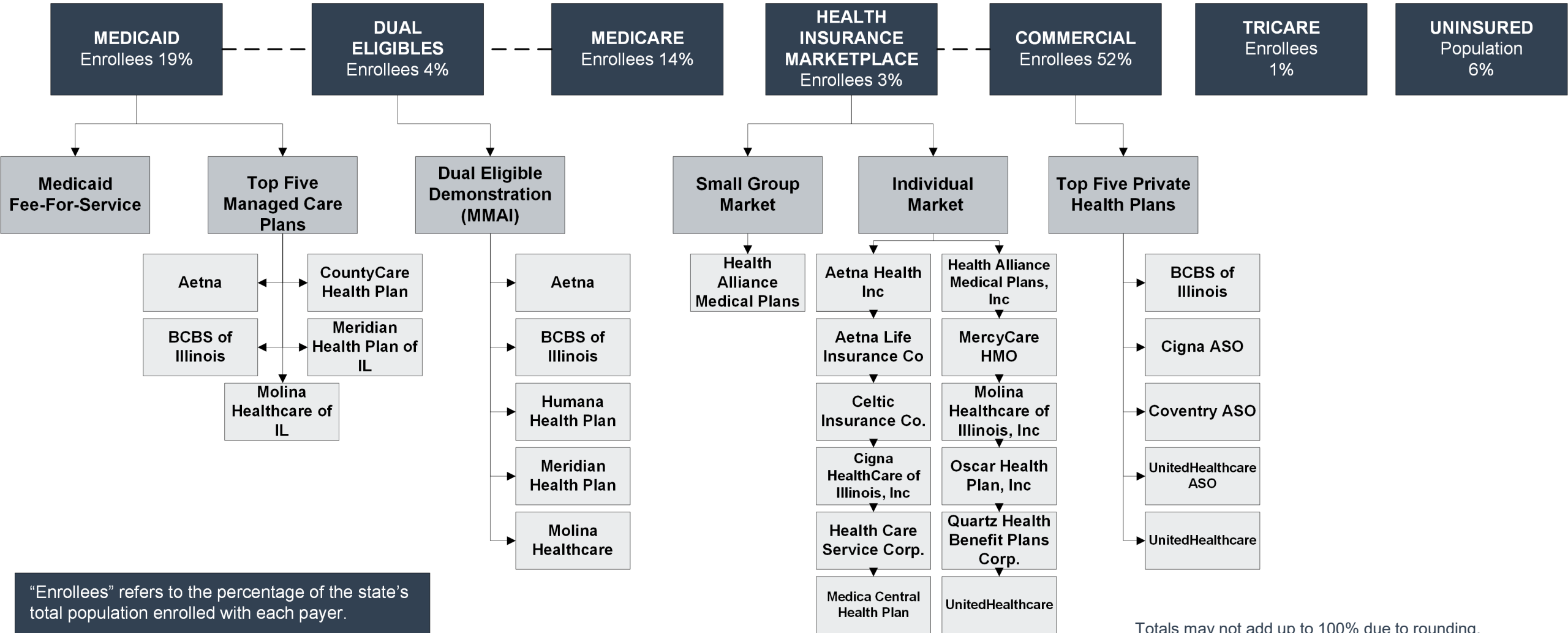
I. [Appendices](#)

1. *OPEN MINDS* Estimates For The Share Of SMI Consumers By Payer/Plan
2. Glossary Of Terms
3. Sources

A. Executive Summary

A.1. Illinois Physical Health Care Coverage by Payer

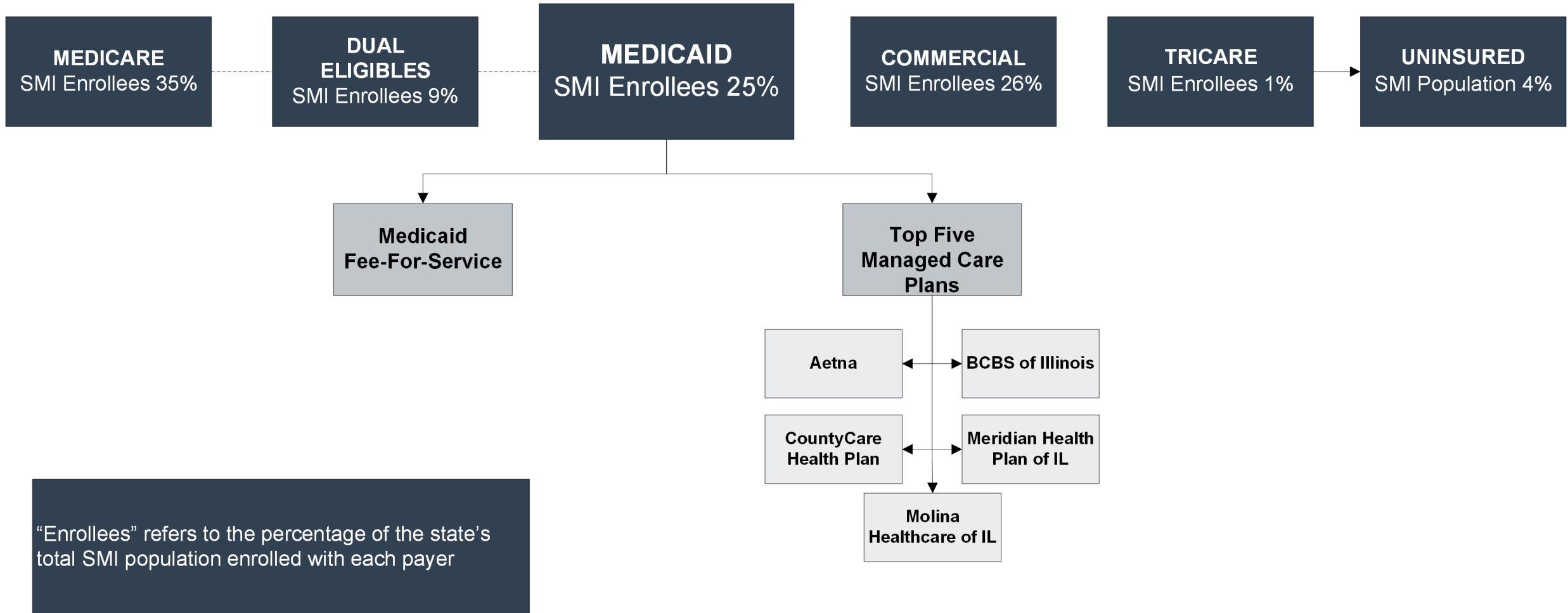
Total Illinois Population- 12,582,032
 Estimated SMI Population- 1,006,563



“Enrollees” refers to the percentage of the state’s total population enrolled with each payer.

Totals may not add up to 100% due to rounding.

A.1. Illinois Behavioral Health Care Coverage by Payer



A.2. Health & Human Services Care Coordination Initiatives

Care Coordination Entities For Chronic Care Populations (Including SMI)		
Care Coordination Entity	Active Program	Description
Managed Care Health Plan	✓	Medicaid health plans are responsible for care coordination.
Primary Care Case Management (PCCM)		None.
Accountable Care Organization (ACO) Program		None.
Affordable Care Act Model Health Home	✓	The state had delayed implementation of the health home program as it reviews the model and is currently rescinding approved SPA's.
Patient-Centered Medical Home (PCMH)		None.
Dual Eligible Demonstration	✓	The state will transition to a Fully Integrated Dual Eligible Special Needs Plan by December 31, 2025.
Managed Long-Term Services and Supports (MLTSS)	✓	Health plans are responsible for providing LTSS to the managed care population and dual eligibles requiring LTSS.
Certified Community Behavioral Health Clinics (CCBHC) Grant	✓	Illinois operates nineteen CCBHCs under federal funding.

A.3. Health Care Safety-Net Delivery System

State Agencies Responsible For Uninsured Citizens & Delivery System Model

Physical Health Services

- The Illinois Department of Public Health administers grants to supplement local funding of county or multi-county health departments that provide physical health services for the safety-net population.

Mental Health Services

- The Illinois Department of Human Services (DHS) Division of Mental Health (DMH) contracts with a network of community mental health centers and agencies to provide mental health services to the safety-net population.
- The Illinois Mental Health Collaborative operated by Beacon Health Options is the administrative services organization for safety-net services. Beacon provides utilization management, provider organization contracting, and data reporting.

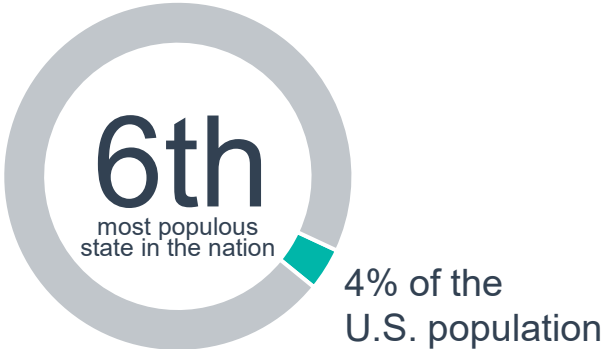
Addiction Treatment Services

- Within DHS, the Division of Alcoholism and Substance Abuse (DASA) contracts with community-based organizations to maintain a statewide addiction treatment program.

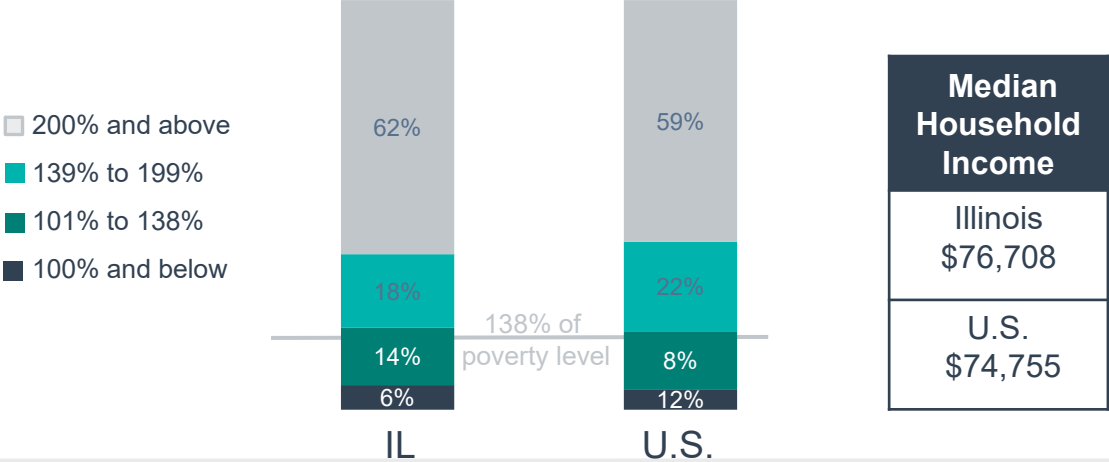
B. Illinois Health Financing System Overview

B.1. Population Demographics

Total Illinois Population- 12,582,032
 Estimated SMI Population- 1,006,563



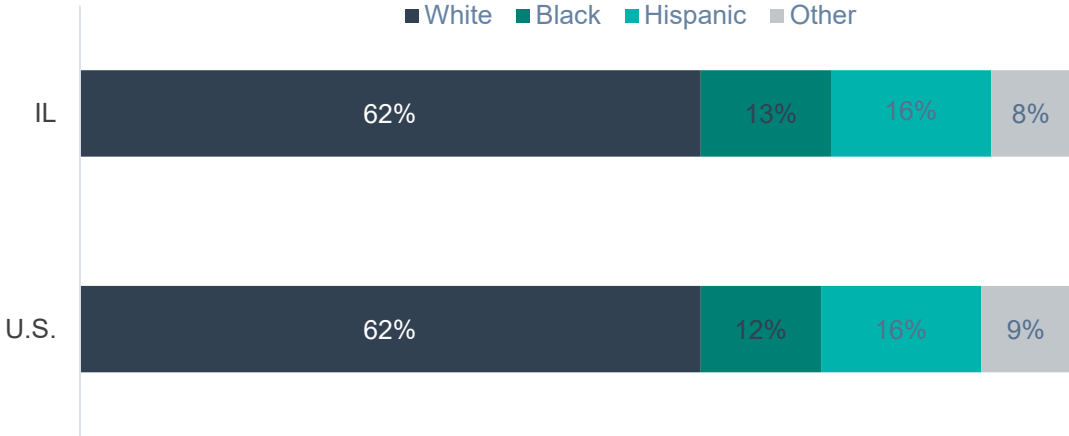
Population Distribution By Income To Poverty Threshold Ratio



Population Distribution By Age



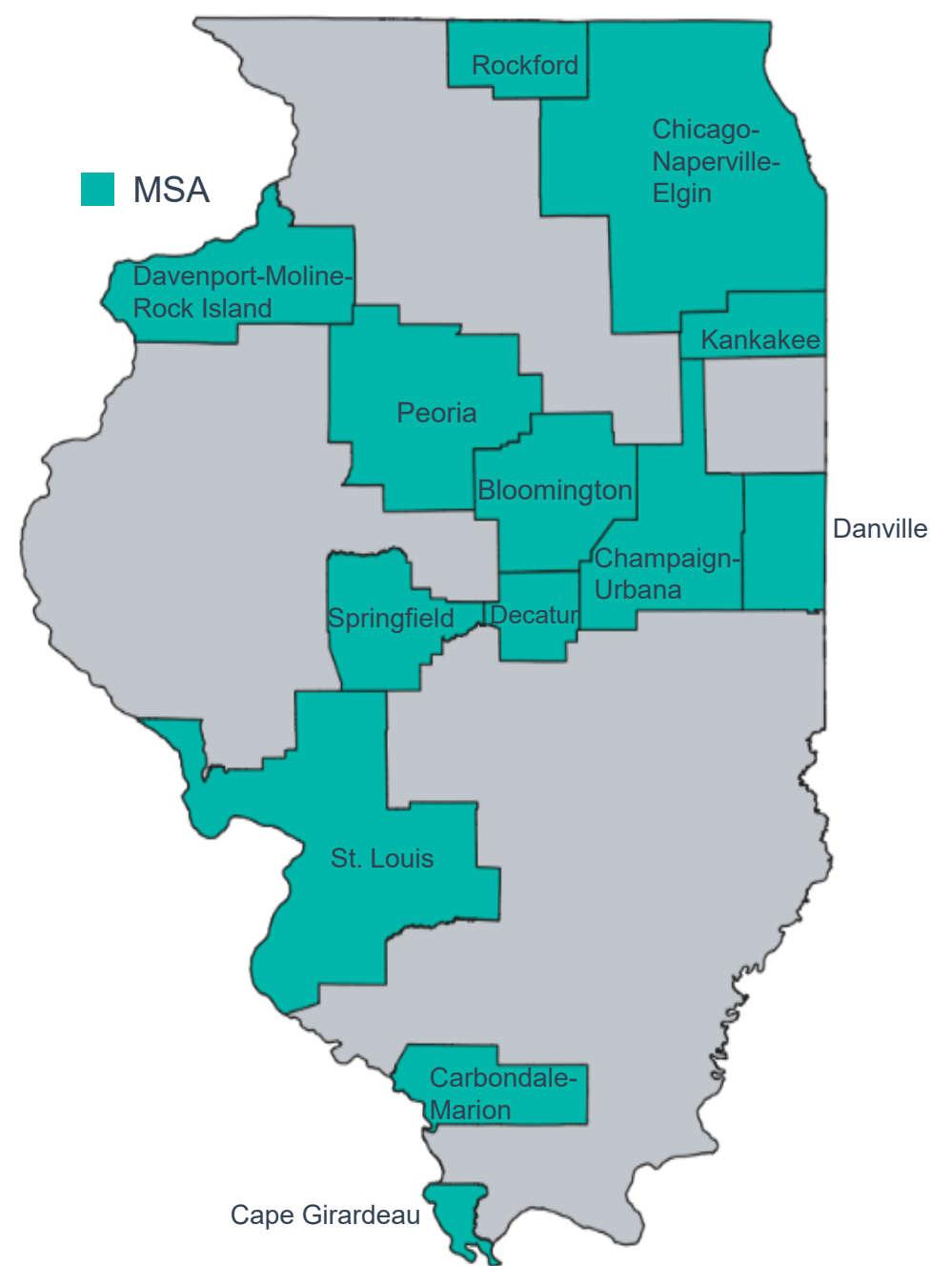
Illinois & U.S. Racial Composition



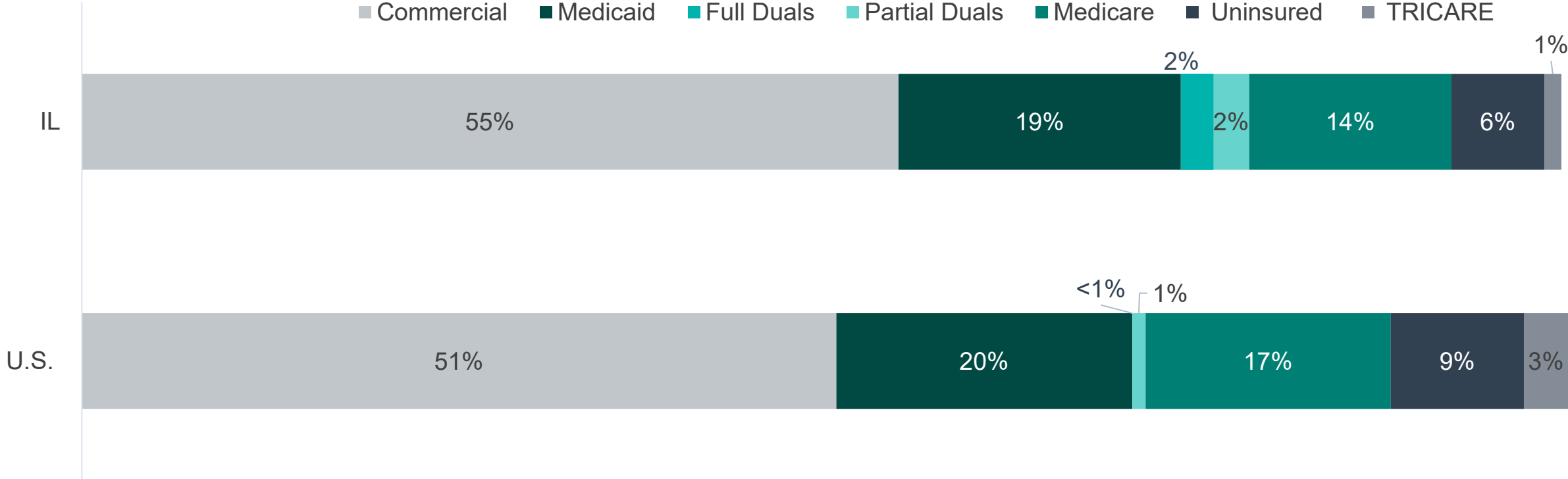
Totals may not add up to 100% due to rounding.

B.2. Population Centers

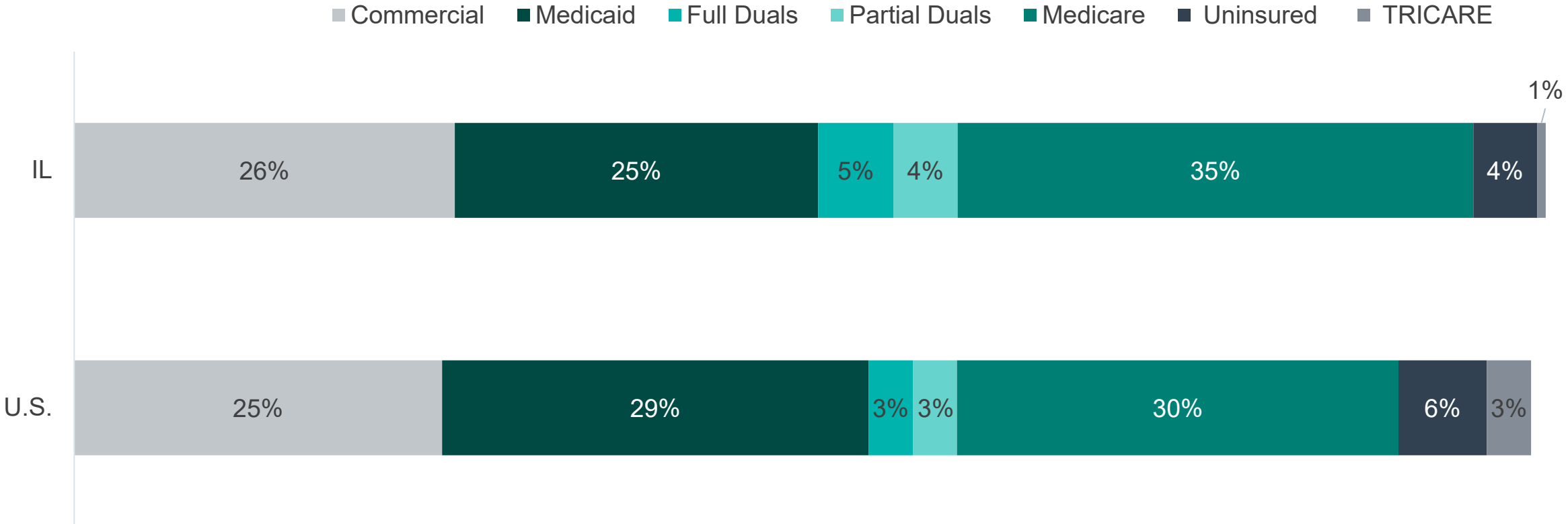
Metropolitan Statistical Areas (MSAs)		
MSA	MSA Residents	Percent Of Population
Total MSAs	14,333,297	N/A
Chicago-Naperville-Elgin, IL-IN-WI	9,441,957	75%
St Louis, MO-IL	2,796,999	22%
Davenport-Moline-Rock Island, IA-IL	379,441	3%
Peoria, IL	362,240	3%
Rockford, IL	334,124	3%
Champaign-Urbana, IL	235,608	2%
Springfield, IL	205,445	2%
Bloomington, IL	167,699	1%
Carbondale-Marion, IL	132,693	1%
Kankakee, IL	105,940	1%
Decatur, IL	100,591	1%
Other MSAs	170,560	1%



B.3. Population Distribution By Payer: National vs. State



B.3. SMI Population Distribution By Payer: National vs. State



Totals may not equal 100% due to rounding

B.4. Largest Illinois Health Plans By Enrollment

Plan Name	Plan Type	Enrollment*
Blue Cross Blue Shield of Illinois	Commercial	7,964,290
Medicare fee-for-service (FFS)	Medicare FFS	1,426,882
MeridianHealth	Medicaid managed care	889,932
Medicaid FFS	Medicaid	792,511
Blue Cross Community Health Plans	Medicaid managed care	744,234
UnitedHealthcare ASO	Commercial administrative services only(ASO)	668,223
Coventry ASO	Commercial ASO	601,286
Cigna ASO	Commercial ASO	582,107
CountyCare	Medicaid managed care	453,553
Aetna Better Health	Medicaid managed care	432,313

* Medicaid enrollment as of December 2023; TRICARE enrollment as of December 2023; Commercial as of December 2023; Medicare enrollment as of December 2023

B.4. Largest Illinois Health Plans By Estimated SMI Enrollment

Plan Name	Plan Type	Enrollment*	Estimated SMI Enrollment
Blue Cross Blue Shield of Illinois	Commercial	7,964,290	334,500
Medicare FFS	Medicare	1,426,882	140,477
MeridianHealth	Medicaid managed care	899,932	104,392
Medicaid FFS	Medicaid	792,511	91,931
Blue Cross Community Health Plan	Medicaid managed care	744,234	86,331
CountyCare	Medicaid managed care	453,553	52,612
Aetna Better Health	Medicaid managed care	432,313	50,148
Aetna Medicare	Medicare Advantage	198,516	45,063
Molina Healthcare HealthChoice	Medicaid managed care	349,532	40,546
Humana Gold Plus	Medicare Advantage	134,684	30,573

* Medicaid enrollment as of December 2023; TRICARE enrollment as of December 2023; Commercial as of December 2023; Medicare enrollment as of December 2023

B.5. Health Insurance Marketplace

Health Insurance Marketplace	
Health Insurance Marketplace Percent	3%
Type of Marketplace	Federal-State Partnership
Individual Enrollment Contact	https://www.healthcare.gov/
	1-800-318-2596
Small Business Enrollment Contact	https://www.healthcare.gov/small-businesses/
	1-800-706-7893

2024 Individual Market Health Plans	
1.	Aetna Health, Inc
2.	Aetna Life Insurance Co
3.	Celtic Insurance Company
4.	Cigna HealthCare of Illinois, Inc
5.	Health Alliance Medical Plans, Inc
6.	Health Care Service Corporation
7.	Quartz
8.	MercyCare HMO
9.	Medica Central Health Plan
10.	Oscar
11.	Molina
12.	UnitedHealthcare

2024 Small Group Market Plans	
1.	Health Alliance Medical Plans

B.6. Accountable Care Organizations

Medicare Shared Savings ACOs

- | | |
|--|--|
| 1. Advocate Physician Partners Accountable Care | 21. Ingalls Care Network |
| 2. Aledade Accountable Care 13, LLC | 22. Keep Well ACO, LLC |
| 3. America's ACO, LLC | 23. Mercy Health Corporation |
| 4. AMITA Health Accountable Care Organization | 24. Mercy Health Network ACO, LLC |
| 5. AmpliPHY of Kentucky ACO, LLC | 25. MHN ACO, LLC |
| 6. Ascension Care Management Health Partners Evansville, LLC | 26. NorthShore Physician Based Care |
| 7. Baptist Health Care Partners, LLC | 27. Northwest Community HealthCare |
| 8. BJC HealthCare ACO, LLC | 28. Northwestern Medicine ACO |
| 9. Caravan Health ACO 20, LLC | 29. OSF Healthcare System |
| 10. Caravan Health ACO 22, LLC | 30. Primary Comprehensive Care ACO |
| 11. Centegra Health & Wellness Network | 31. Prime Accountable Care |
| 12. Community Healthcare Partners ACO, Inc | 32. Rush Health ACO, Inc. |
| 13. DMH Health Network | 33. Springfield Clinic ACO |
| 14. DuPage Medical Group ACO | 34. SSM ACO, LLC |
| 15. Edward-Elmhurst Accountable Care | 35. SSM IL ACO, LLC |
| 16. Essential Health Partners ACO | 36. St Luke's ACO, LLC |
| 17. Franciscan ACO, Inc | 37. UnityPoint Accountable Care, LLC |
| 18. Genesis Accountable Care Organization, LLC | 38. University of Chicago Care Network Accountable Care Organization |
| 19. HSHS ACO | 39. USMM Accountable Care Partners |
| 20. Illinois Rural Community Care Organization (IL-RCCO) | 40. VillageMD Chicago ACO |

B.6. Accountable Care Organizations

Next Generation ACOs

1. Deaconess Care Integration, LLC
2. UnityPoint Accountable Care, LLC

End-Stage Renal Disease Model ACOs

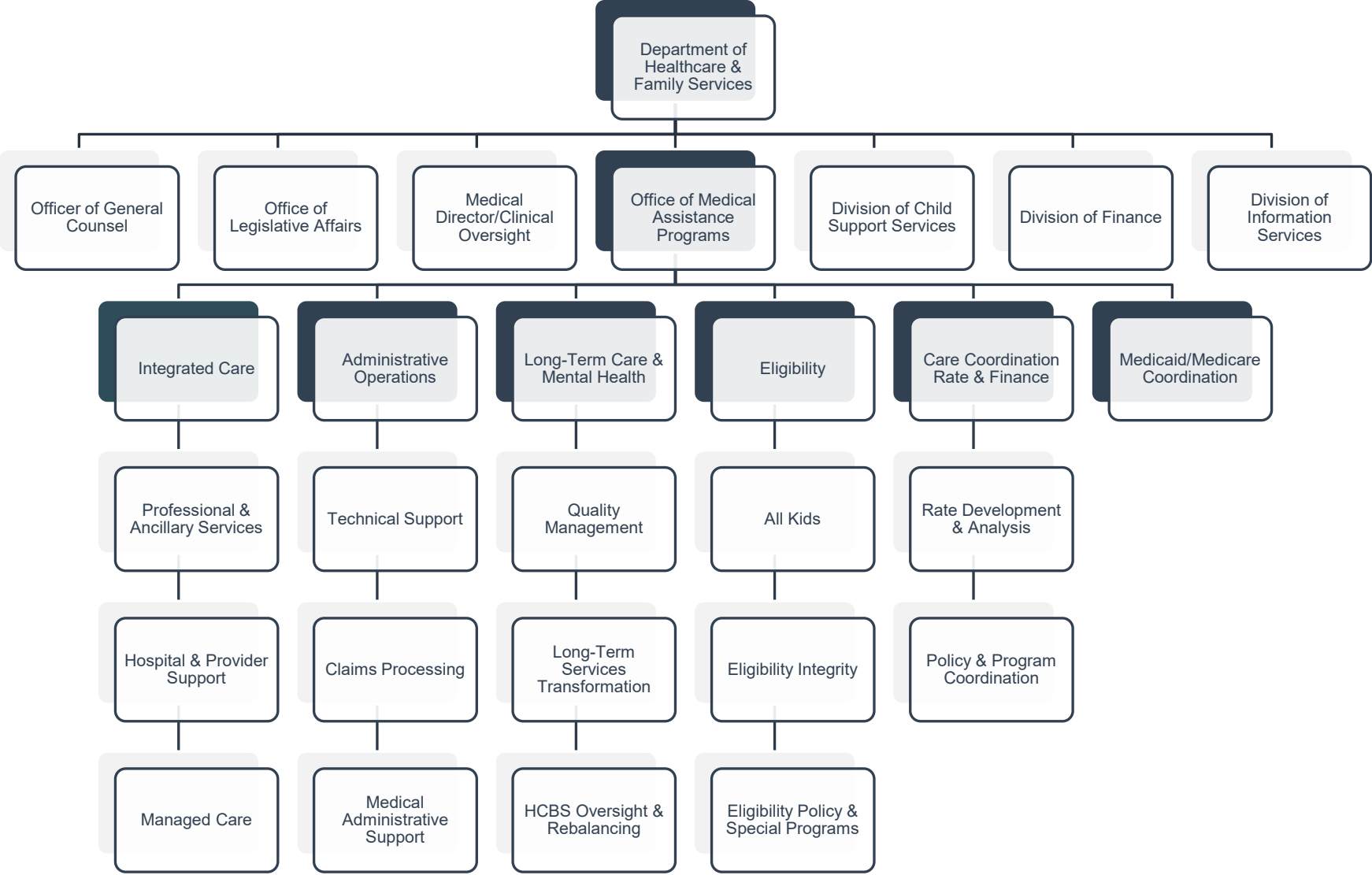
1. Fresenius Seamless Care of Central Illinois
2. Fresenius Seamless Care of Chicago

Commercial ACOs

ACO	Commercial Insurer
Adventist Health-Illinois	Cigna
Advocate Physician Partners Accountable Care	UnitedHealthcare, Blue Cross Blue Shield Illinois
Aetna Whole Health Chicago	Aetna
AMITA Health Accountable Care Organization	Blue Cross Blue Shield Illinois
Blue Cross and Blue Shield of Illinois / NorthShore University Health System	Blue Cross Blue Shield Illinois
Northwestern Medicine Physician Partners ACO	Cigna
Centegra Health & Wellness Network	Blue Cross Blue Shield Illinois
Kane County IPA	Blue Cross Blue Shield Illinois
NexusACO	UnitedHealthcare
OSF Healthcare System	Blue Cross Blue Shield Illinois

C. Medicaid Administration, Governance & Operations

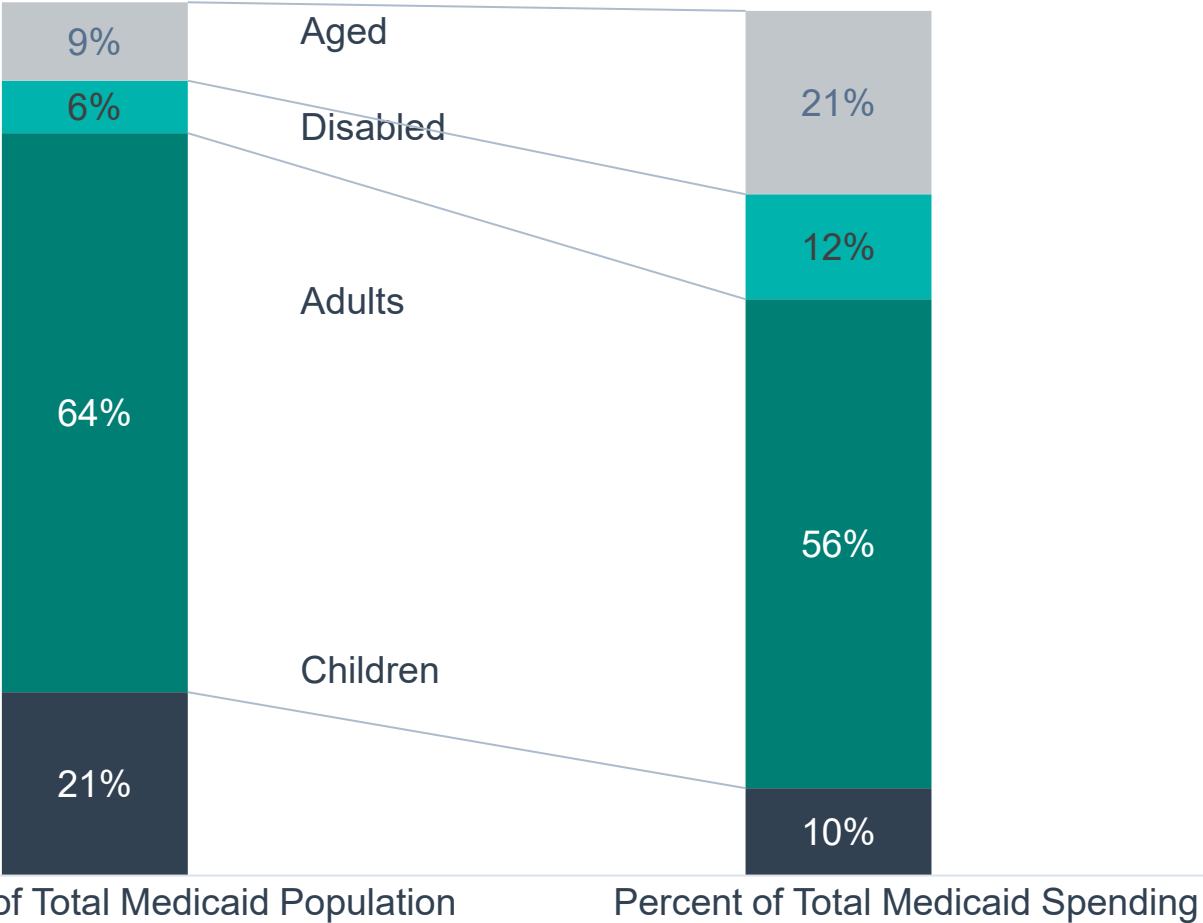
C.1. Medicaid Governance: Organization Chart



C.1. Medicaid Governance: Key Leadership

Name	Position	Department	Email
Elizabeth Whitehorn	Director	Department of Healthcare and Family Services	elizabeth.whitehorn@illinois.gov
Arvind K. Goyal	Chief Medical Officer	Division of Medical Programs	arvind.goyal@illinois.gov
Kelly Cunningham	Administrator, Director of State Medicaid and CHIP	Division of Medical Programs	kelly.cunningham@illinois.gov
Tracy Keen	Administrator, Division of Eligibility	Division of Medical Programs	tracy.keen@illinois.gov

C.2. Medicaid Program Spending By Eligibility Group



Medicaid Spending Per Enrollee, FY 2021		
	U.S.	IL
All populations	\$8,651	\$8,629
Children	\$3,584	\$4,130
Adults	\$5,462	\$6,217
Expansion adults	\$7,486	\$7,831
Blind and disabled	\$23,935	\$16,289
Aged	\$18,514	\$19,816

Based on FY 2021 data

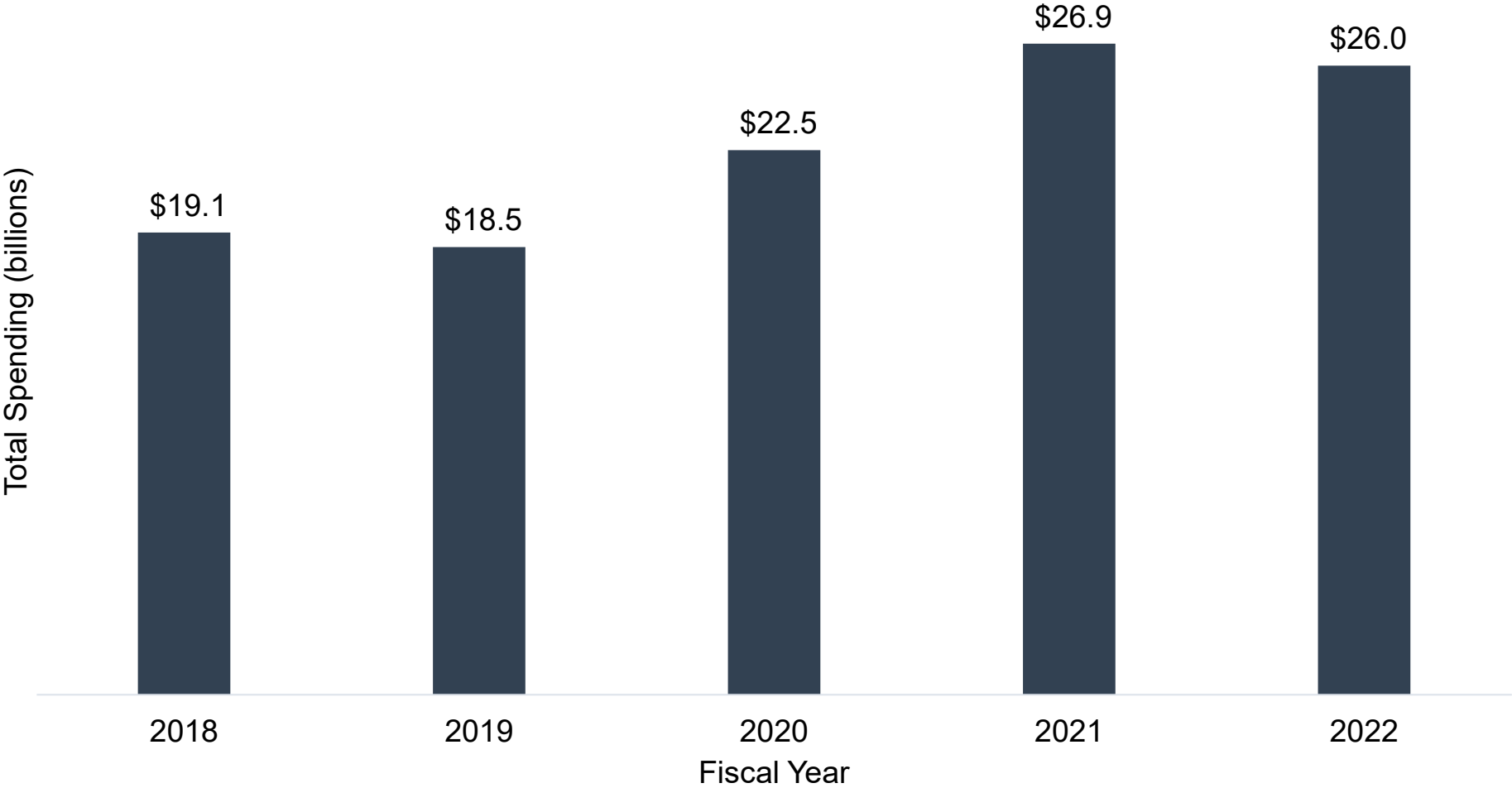
Totals may not equal 100% due to rounding

C.2. Medicaid Program Spending: Budget

Budget Item	SFY 22 Spending	Percent Of Budget
Managed care and premium assistance	\$19,017,000,000	73%
Hospital	\$2,590,000,000	10%
Home- and community-based LTSS	\$1,170,000,000	4%
Institutional LTSS	\$1,106,000,000	4%
Other acute	\$1,090,000,000	4%
Medicare premiums and coinsurance	\$765,000,000	3%
Physician	\$184,000,000	1%
Clinic and health center	\$74,000,000	<1%
Other practitioner	\$29,000,000	<1%
Dental	\$16,000,000	<1%
Drugs	\$1,000,000	<1%
Budget Total: \$26,042,000,000		

Federal & County Financial Participation	
FY 2024 Federal Medical Assistance Percentage (FMAP)	51.1%
CY 2024 Newly Eligible FMAP (expansion population)	88.0%
Counties contribute to state Medicaid share	No

C.2. Medicaid Program Spending: Change Over Time



C.3. Medicaid Expansion Status

Illinois Medicaid Expansion Characteristics	
Participating In Expansion	Yes
Date Of Expansion	January 2014
Medicaid Eligibility Income Limit For Able-Bodied Adults	<ul style="list-style-type: none"> • 133% of the Federal Poverty Level (FPL) • Note: The Patient Protection and Affordable Care Act (PPACA) requires that 5% of income be disregarded when determining eligibility
Legislation Used To Expand Medicaid	Senate Bill 26, 98th General Assembly
Number Of Individuals Enrolled In The Expansion Group (October 2023)	1,035,668
Number Of Enrollees Newly Eligible Due To Expansion	940,022
Benefits Plan For Expansion Population	The alternative benefit plan benefits are identical to state plan benefits.

C.4. Medicaid Program Benefits

Federally Mandated Services

1. Inpatient hospital services other than services in an institution for mental disease (IMD)
2. Outpatient hospital services
3. Rural Health Clinic services
4. Federally Qualified Health Center (FQHC) services
5. Laboratory and x-ray services
6. Nursing facilities for individuals 21 and over
7. Early and Periodic Screening and Diagnosis and Treatment (EPSDT)
8. Family planning services and supplies
9. Free standing birth centers
10. Pregnancy-related and postpartum services
11. Nurse midwife services
12. Tobacco cessation programs for pregnant women
13. Physician services
14. Medical and surgical services of a dentist
15. Home health services
16. Nurse practitioner services
17. Non-emergency transportation to medical care

Illinois's Optional Services

1. Case management services
2. Nurse anesthetist and clinical nurse specialist services
3. Chiropractic services
4. Clinical services
5. Dental services, including dentures
6. Diagnostic, screening, and preventive services
7. Rehabilitative services
8. Durable medical equipment and supplies
9. Optometry and eyeglasses
10. Hospice services
11. Inpatient psychiatric services for individuals 21 and under
12. Intermediate care facility services for individuals with intellectual disabilities
13. Nursing facility services for individuals under 21 years old
14. Occupational and physical therapy
15. Podiatric services
16. Prescribed drugs
17. Prosthetic devices
18. Tuberculosis-related services
19. Speech, hearing, and language disorder services

D. Medicaid Financing & Service Delivery System

D.1. Medicaid Financing & Service Delivery System

Medicaid System Characteristics		
Characteristics	Medicaid Fee-For-Service (FFS)	Medicaid Managed Care
Enrollment (December 2023)	792,511	2,999,548
SMI Enrollment	<ul style="list-style-type: none"> Illinois does not specifically preclude individuals with SMI from enrolling in managed care based on a diagnosis of SMI; however, individuals with SMI may be enrolled in FFS based on other criteria. Estimated 21% of the SMI population in FFS, 79% in managed care 	
Management	Department of Healthcare and Family Services	Six health plans
Payment Model	FFS	Capitated rate
Geographic Service Area	Statewide	Statewide

Total Medicaid: 3,792,059 | Total Medicaid With SMI: 439,878

D.1. Medicaid System Overview

Medicaid Financial Delivery System Enrollment		
Total Medicaid population distribution	<ul style="list-style-type: none"> As of December 2023: 21% in fee-for-service (FFS), 79% in managed care 	
SMI population inclusion in managed care	<ul style="list-style-type: none"> Illinois does not specifically preclude individuals with SMI from enrolling in managed care. Estimated 21% of the SMI population in FFS, 79% in managed care 	
Dual eligible population inclusion in managed care	<ul style="list-style-type: none"> Managed care is mandatory for dual eligibles receiving long-term services and supports (LTSS). Estimated 64% of the Dual Eligible population in FFS, 36% in managed care. 	
Long-term services and supports population inclusion in managed care	<ul style="list-style-type: none"> Most beneficiaries, except individuals with I/DD, receive LTSS services through the health plan's capitation rate. 	
Medicaid Financing & Risk Arrangements: Behavioral Health		
Service Type	FFS Population	Managed Care Population
Traditional Behavioral Health	Covered FFS by the state	Included in the health plan's capitation rate
Specialty Behavioral Health	Covered FFS by the state	Included in the health plan's capitation rate
Pharmaceuticals	Covered FFS by the state	Included in the health plan's capitation rate
Long-Term Services and Supports (LTSS)	Covered FFS by the state	<ul style="list-style-type: none"> LTSS for most populations are included in the health plan's capitation. LTSS for the I/DD population are not included but may be added to the health plan contract with 180 days notice.

D.1. Medicaid Care Coordination Initiatives

Care Coordination Entities For Chronic Care Populations (Including SMI)		
Care Coordination Entity	Active Program	Description
Managed Care Health Plan	✓	Medicaid health plans are responsible for care coordination.
Primary Care Case Management (PCCM)		None.
Accountable Care Organization (ACO) Program		None.
Affordable Care Act Model Health Home	✓	The state had delayed implementation of the health home program as it reviews the model, the state is currently withdrawing SPA's that had been previously approved.
Patient-Centered Medical Home (PCMH)		None.
Dual Eligible Demonstration	✓	The state will transition to a Fully Integrated Dual Eligible Special Needs Plan by December 31, 2025.
Managed Long-Term Services and Supports (MLTSS)	✓	Health plans are responsible for providing LTSS to the managed care population and dual eligibles requiring LTSS.
Certified Community Behavioral Health Clinics (CCBHC) Grant	✓	Illinois operates nineteen CCBHCs under federal funding.

D.1. Medicaid Service Delivery System Enrollment By Eligibility Group

Population	Mandatory FFS Enrollment	Option To Enroll In FFS Or Managed Care	Mandatory Managed Care Enrollment
Parents and caretakers			X
Children			X
Blind and disabled individuals			X
Aged individuals			X
Dual eligibles		Individuals not requiring LTSS services and reside in a dual eligible demonstration regions.	Individuals requiring LTSS services are required to enroll in managed care
Medicaid expansion			X
Individuals residing in nursing homes			X
Individuals residing in ICF/IDD			X
Individuals in foster care			X
Other populations	<ul style="list-style-type: none"> Limited benefits enrollees Individuals with third-party coverage Individuals eligible through spend-down Incarcerated or forensically institutionalized individuals 	<ul style="list-style-type: none"> Alaskan natives American indigenous peoples 	

D.2. Medicaid FFS Program: Overview

- FFS enrollment as of December 2023 was 792,511.

D.2. Medicaid FFS Program: Behavioral Health Benefits

- All behavioral health services are financed FFS by the state.
- Supported employment, crisis intervention, respite services, intensive in-home services, peer recovery support, evidence-based home visiting, and addiction case management are available through pilot programs in select areas of the state. See [section D.6.](#) for more information.

FFS Mental Health Benefits

1. Inpatient treatment
2. Assessment and evaluation
3. Crisis services
4. Medication administration, management, monitoring, and training
5. Individual, family, and group psychotherapy
6. Community support services and team
7. Assertive community treatment (ACT)
8. Psychosocial rehabilitation services
9. Intensive outpatient
10. Case management
11. Transition linkage and aftercare
12. Applied Behavioral Analysis

FFS Addiction Treatment Benefits

1. Inpatient treatment
2. Outpatient treatment
3. Intensive outpatient treatment
4. Residential treatment including in IMDs
5. Medication assisted treatment
6. Medically supervised withdrawal management

D.2. Medicaid FFS Program: SMI Population

- Illinois does not specifically preclude individuals with SMI from enrolling in managed care based on a diagnosis of SMI; however, individuals with SMI may be enrolled in FFS based on other criteria.
- As of December 2023, *OPEN MINDS* estimates that 21% of the SMI population was enrolled in FFS.

D.2. Medicaid FFS Program: Pharmacy Benefit

Illinois FFS Program Pharmacy Benefit & Utilization Restrictions	
State Uses Pharmacy Benefit Manager	No
Responsible For Financing General Pharmacy Benefit	Medicaid FFS
Responsible For Financing Mental Health Pharmacy Benefit	Medicaid FFS
State Uses A Preferred Drug List (PDL) For General Pharmacy	Yes
State Uses A PDL For Mental Health Drugs	Yes, antidepressants and antipsychotics are included on the PDL.
State Uses A PDL For Addiction Treatment Drugs	All drugs for the treatment of addiction are preferred.
Coverage Of Antipsychotic Injectable Medications	Yes, antipsychotic injectable medications are included on the PDL and require prior authorization even if preferred.
Utilization Restrictions For Mental Health Or Addiction Treatment Drugs	<ul style="list-style-type: none"> • Prior authorization is required for all antipsychotics prescribed to children under eight and long-term care residents. • Non-preferred drugs require prior approval.
State Has A Pharmacy Lock-In Program Or Other Restriction Program	In the Recipient Restriction Program, the state uses statistical norms to identify individuals receiving medical services, including pharmacy, in excess of need. For these individuals, a primary provider is identified to authorize the Medicaid services for which the participant has been restricted.

D.3. Medicaid Managed Care Program: Overview

- Managed care enrollment as of December 2023 was 2,999,548.
- HealthChoice Illinois, the state's managed care program, offers four statewide commercial health plans with two additional health plans available only in Cook County. Additionally, there are two plans that are just for dual eligibles.
 - The health plans serve most populations and are at-risk for physical health, behavioral health, and long-term services and supports.
- The HealthChoice Illinois contract includes a requirement for the health plans to report on their progress towards enrolling provider organizations in arrangements that incentivize value-based care.

D.3. Medicaid Managed Care Program: Health Plan Characteristics

Aetna Better Health	Blue Cross Blue Shield Of Illinois
<ol style="list-style-type: none"> 1. Profit status: For-profit 2. Parent company: Aetna/ CVS 3. Behavioral health subcontractor: None 4. Pharmacy benefits manager: CVS Caremark 5. Managed care programs: HealthChoice Illinois, Medicare-Medicaid Alignment Initiative (MMAI) 6. Cook County only: No 7. Enrollment share: 15% 	<ol style="list-style-type: none"> 1. Profit status: Non-profit 2. Parent company: Health Care Service Corporation 3. Behavioral health subcontractor: None 4. Pharmacy benefits manager: Prime Therapeutics 5. Managed care programs: HealthChoice Illinois, MMAI 6. Cook County only: No 7. Enrollment share: 25%
CountyCare Health Plan	Humana Health Plan
<ol style="list-style-type: none"> 1. Profit status: Non-profit 2. Parent company: Cook County Health and Hospitals System 3. Behavioral health subcontractor: None 4. Pharmacy benefits manager: CVS Caremark 5. Managed care programs: HealthChoice Illinois 6. Cook County only: Yes 7. Enrollment share: 15% 	<ol style="list-style-type: none"> 1. Profit status: For-profit 2. Parent company: Humana, Inc. 3. Behavioral health subcontractor: Beacon Health Options 4. Pharmacy benefits manager: None 5. Managed care programs: MMAI 6. Cook County only: No 7. Enrollment share: <1%

Totals may not equal 100% due to rounding.

D.3. Medicaid Managed Care Program: Health Plan Characteristics

Meridian Health Plan Of Illinois	
1.	Profit status: For-profit
2.	Parent company: Centene-WellCare
3.	Behavioral health subcontractor: Cenpatico
4.	Pharmacy benefits manager: Express Scripts
5.	Managed care programs: HealthChoice Illinois, MMAI, YouthCare
6.	Cook County only: No
7.	Enrollment share: 31%

Molina Healthcare of Illinois	
1.	Profit status: For-profit
2.	Parent company: Molina
3.	Behavioral health subcontractor: None
4.	Pharmacy benefits manager: None
5.	Managed care programs: HealthChoice Illinois, MMAI
6.	Cook County only: No
7.	Enrollment share: 12%

Totals may not equal 100% due to rounding.

D.3. Medicaid Managed Care Program: Behavioral Health Benefits

- Behavioral health and pharmacy benefits are included in the health plan's capitation rate.
- In lieu of state plan services, health plans may provide up to 15 days per month of cost-effective behavioral health inpatient services in an institution for mental diseases (IMD) to individuals ages 21 to 64. Enrollees are not required to accept this substitution.
- Supported employment, crisis intervention, respite services, intensive in-home services, peer recovery support, evidence-based home visiting, and addiction case management are available through pilot programs in select areas of the state. See [section D.6.](#) for more information.

Managed Care Mental Health Benefits

1. Inpatient treatment
2. Assessment and evaluation
3. Crisis services
4. Medication administration, management, monitoring, and training
5. Individual, family, and group psychotherapy
6. Community support services and team
7. Assertive community treatment (ACT)
8. Psychosocial rehabilitation services
9. Intensive outpatient
10. Case management
11. Transition linkage and aftercare
12. Applied Behavioral Analysis

Managed Care Addiction Treatment Benefits

1. Inpatient treatment
2. Outpatient treatment
3. Intensive outpatient treatment
4. Residential treatment including in IMDs
5. Medication assisted treatment
6. Medically supervised withdrawal management

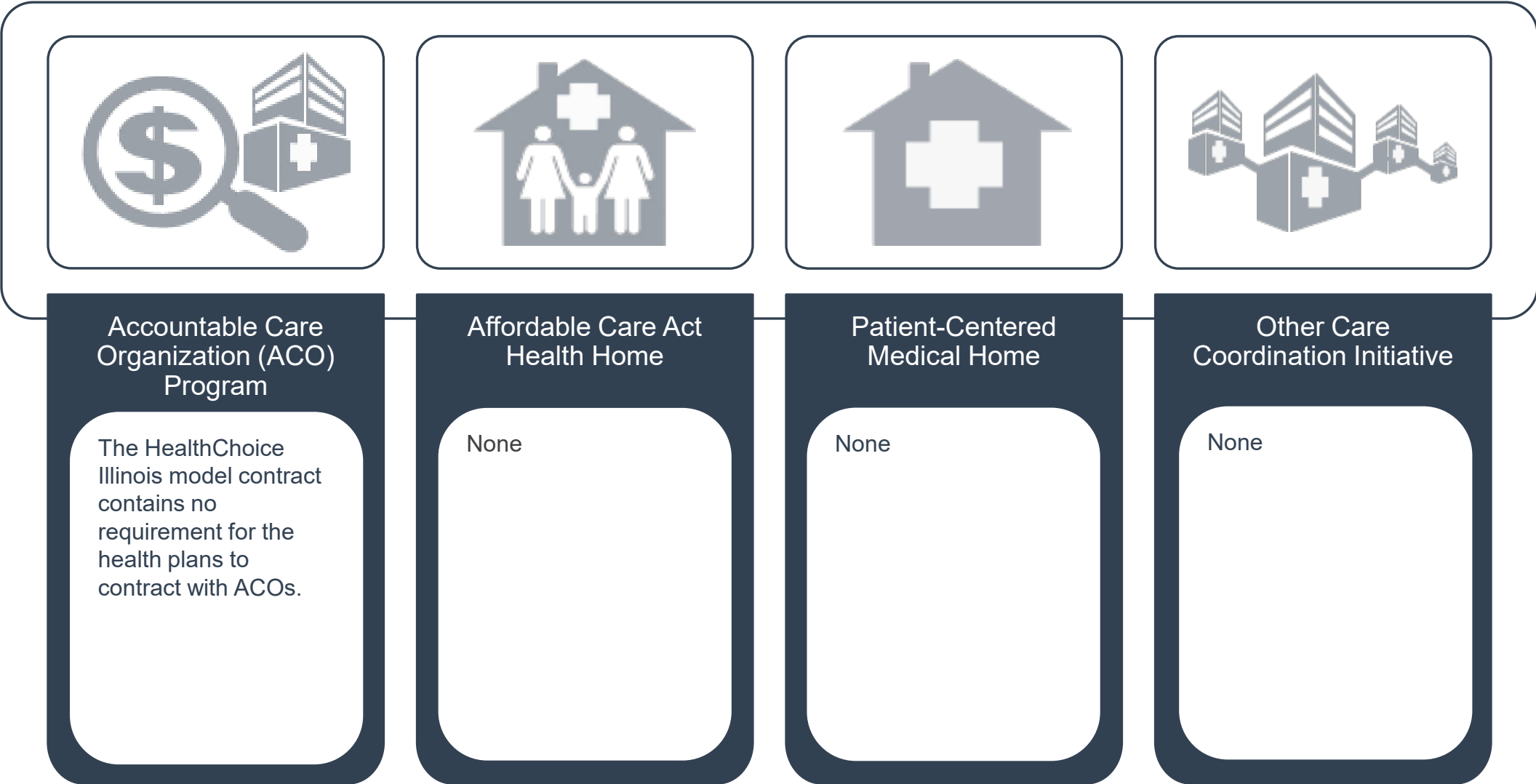
D.3. Medicaid Managed Care Program: SMI Population

- Illinois does not specifically preclude individuals with SMI from enrolling in managed care based on a diagnosis of SMI; however, individuals with SMI may be enrolled in FFS based on other criteria.
- As of December 2023, *OPEN MINDS* estimates that 79% of the SMI population was enrolled in managed care.

D.3. Medicaid Managed Care Program: Pharmacy Benefit

Illinois Managed Care Program Pharmacy Benefit	
Responsible For Financing General Pharmacy Benefit	Health plan
Responsible For Financing Mental Health Pharmacy Benefit	Health plan
Health Plan Uses A Preferred Drug List (PDL) For General Pharmacy	The state has implemented a single, uniform PDL.
Health Plan Uses A PDL For Mental Health Drugs	
Health Plan Uses A PDL For Addiction Treatment Drugs	
Health Plan Use Of Utilization Restrictions For Mental Health & Addiction Treatment Drugs	Health plans are responsible for setting utilization restriction including step therapy and prior authorizations.
Health Plan Allowed To Implement Pharmacy Lock-In Program	Yes, health plans must have a recipient restriction program that limits individuals to one primary care provider or pharmacy for a reasonable period of time.

D.4. Medicaid Program: Care Coordination Initiatives



D.5. Medicaid Program: Demonstration Waivers

Waiver Title	Waiver Description	Waiver Type	Enrollment Caps	Effective Date	Expiration Date
Illinois Continuity of Care & Administrative Simplification	Seeks to address coverage for pregnant women 60 days postpartum, address the churning between FFS and Managed Care due to late paperwork, and implementing hospital presumptive eligibility.	1115	N/A	01/19/2021	12/31/2025
Illinois' Behavioral Health Transformation	Tests a combination of initiatives to integrate physical and behavioral health services. See section D.6.	1115	Enrollment caps vary by pilot	07/01/2018	06/20/2024
IL MLTSS Waiver (IL-01)	Implements a managed long-term services and support program in the state.	1915(b)	N/A	01/01/2020	12/31/2024

D.5. Medicaid Program: Section 1915 (c) HCBS Waivers

Waiver Title	Target Population	2024 Enrollment Cap	Operating Unit	Concurrent Management Authority?
IL HCBS Waiver for Persons Who are Elderly (0143.R07.00)	Individuals aged 65 and above and individuals aged 60 to 64 with physical disabilities	150,389	Department of Aging	Yes; 1915 (b) waiver and SPA
IL Persons with Disabilities (0142.R07.00)	Physically disabled individuals ages 0 to 59	35,405	Division of Rehabilitation Services	Yes; 1915 (b) waiver and SPA
IL Adults w/DD Waiver (0350.R05.00)	Individuals aged 18 and above with autism, developmental disabilities, or intellectual disabilities	25,690	Division of Developmental Disabilities	None
IL Supportive Living Program (0326.R05.00)	Individuals aged 65 and above and individuals ages 22 to 64 with physical disabilities	15,705	Division of Medical Programs	Yes; 1915 (b) waiver and SPA
IL HCBS Waiver for Persons w/HIV or AIDS (0202.R07.00)	Individuals of all ages with HIV or AIDS	1,263	Division of Rehabilitation Services	Yes; 1915 (b) waiver and SPA

D.5. Medicaid Program: Section 1915 (c) HCBS Waivers (cont.)

Waiver Title	Target Population	2024 Enrollment Cap	Operating Unit	Service Management Authority?
IL Medically Fragile, Technology Dependent Waiver (0278.R06.00)	Individuals under age 21 who are medically fragile or technology dependent	1,804	University of Illinois at Chicago, Division of Specialized Care for Children	None
IL Support Waiver for Children and Young Adults with Developmental Disabilities (0464.R03.00)	Individuals ages 3 to 21 with autism, developmental disabilities, or intellectual disabilities	1,440	Division of Developmental Disabilities (DDD)	None
IL Residential Waiver for Children and Young Adults with DD (0473.R03.00)	Eligible children and young adults with developmental disabilities from age three through age twenty-one who meet functional and financial eligibility.	295	IDHS, DDD	None
IL Persons with Brain Injury (0329.R05.00)	Individuals of all ages with acquired brain injury	3,212	Division of Rehabilitation Services	Yes; 1915 (b) waiver and SPA

D.6. Medicaid Program: New Initiatives- Expanding Access to Care for Kids

- In April 2023, the Department of Health and Human Services (HHS), through the Centers for Medicare & Medicaid Services (CMS), approved a state plan amendment (SPA) that will provide Illinois more Medicaid funding for eligible children receiving Medicaid-covered health care services in schools.
 - This approval advances the expansion of school-based health services, especially for youth mental health services.
- Illinois' newly approved SPA allows schools to receive more Medicaid funding for covered services for all children with Medicaid, rather than only those children with an Individualized Education Program (IEP), which is a plan or program tailored for children with disabilities.
- This SPA approval is one of several steps CMS and HHS are taking to promote access to school-based health services and the availability of Medicaid-covered services, including mental health treatment in schools.

E. Medicare Financing & Service Delivery System

E.1. Medicare Financing & Service Delivery System

Medicare System Characteristics		
Characteristics	Traditional Medicare (FFS)	Medicare Advantage
Enrollment (January 2024)	1,426,882	1,327,271
SMI Enrollment	<ul style="list-style-type: none"> • <i>OPEN MINDS</i> estimates 48% of the population in Medicare Advantage, 52% in Traditional Medicare. 	
Management	<ul style="list-style-type: none"> • Part A: Inpatient hospital, skilled nursing facility care, nursing home care, hospice and home health care • Part B: Clinical research, ambulance services, durable medical equipment, mental health and limited outpatient prescription drugs 	<ul style="list-style-type: none"> • Medicare Advantage Plans provide Part A and Part B benefits, plus additional benefits based on plan chosen
Payment Model	<ul style="list-style-type: none"> • Part A & B cover up to 80%, remaining costs can be paid out of pocket 	<ul style="list-style-type: none"> • Fixed amounts paid based on health plan chosen
Geographic Service Area	Statewide	Statewide

Total Medicare: 2,754,153 | Total Medicare With SMI: 625,192

E.1. Medicare Financing & Service Delivery System

Medicare Financial Delivery System Enrollment	
Total Medicare population distribution	As of January 2024: 48% Medicare Advantage, 52% in traditional Medicare.
SMI population inclusion in managed care	Estimated 48% of population in Medicare Advantage, 52% in traditional Medicare.
Medicare population inclusion in Chronic special needs plan or (C-SNP).	Estimated that less than 1% of population is enrolled in C-SNP plans.
Medicare population inclusion in Institutional Special Needs Plan (I-SNP).	Estimated that less than 1% of population is enrolled in I-SNP plans.

E.2. Medicare System: Overview

- Medicare enrollment as of January 2024 was 2,754,153.
- It is estimated around 20% of the state's total population is enrolled in Medicare, compared with about 18% of the U.S. population enrolled in Medicare.
 - *OPEN MINDS* estimates approximately 35% of the state's Medicare population has a SMI.
- As of January 2024, Medicare Advantage plans covered almost half of the state's total Medicare population.
 - There are Medicare Advantage plans throughout Illinois, with plan availability ranging from 10 plans to 72 plans, depending on the county.
- There are 41 insurers that offer Medigap plans in Illinois, with premiums that vary depending on whether the person is in the Chicago area, the north-central area, or the southern area of the state. There are also two insurers that offer Medicare SELECT plans in Illinois.
- In 2023 in Illinois, there were 22 stand-alone Medicare Part D plans available, with premiums starting at \$9.90 per month.
- Many Medicare beneficiaries receive financial assistance through Medicaid with the cost of Medicare premiums, prescription drug expenses, and services not covered by Medicare – such as long-term care.

E.3. Medicare ACOs

Next Generation ACOs	End-Stage Renal Disease Model ACOs
<ol style="list-style-type: none"> 1. Deaconess Care Integration, LLC 2. UnityPoint Accountable Care, LLC 	<ol style="list-style-type: none"> 1. Fresenius Seamless Care of Central Illinois 2. Fresenius Seamless Care of Chicago
Medicare Shared Savings ACOs	
<ol style="list-style-type: none"> 1. Advocate Physician Partners Accountable Care 2. Aledade Accountable Care 13, LLC 3. America's ACO, LLC 4. AMITA Health Accountable Care Organization 5. AmpliPHY of Kentucky ACO, LLC 6. Ascension Care Management Health Partners Evansville, LLC 7. Baptist Health Care Partners, LLC 8. BJC HealthCare ACO, LLC 9. Caravan Health ACO 20, LLC 10. Caravan Health ACO 22, LLC 11. Centegra Health & Wellness Network 12. Community Healthcare Partners ACO, Inc 13. DMH Health Network 14. DuPage Medical Group ACO 15. Edward-Elmhurst Accountable Care 16. Essential Health Partners ACO 17. Franciscan ACO, Inc 18. Genesis Accountable Care Organization, LLC 19. HSHS ACO 20. Illinois Rural Community Care Organization (IL-RCCO) 	<ol style="list-style-type: none"> 21. Ingalls Care Network 22. Keep Well ACO, LLC 23. Mercy Health Corporation 24. Mercy Health Network ACO, LLC 25. MHN ACO, LLC 26. NorthShore Physician Based Care 27. Northwest Community HealthCare 28. Northwestern Medicine ACO 29. OSF Healthcare System 30. Primary Comprehensive Care ACO 31. Prime Accountable Care 32. Rush Health ACO, Inc. 33. Springfield Clinic ACO 34. SSM ACO, LLC 35. SSM IL ACO, LLC 36. St Luke's ACO, LLC 37. UnityPoint Accountable Care, LLC 38. University of Chicago Care Network Accountable Care Organization 39. USMM Accountable Care Partners 40. VillageMD Chicago ACO

E.4. Medicare System: New Initiatives

- There are no new or pending initiatives currently.

F. Dual Eligible Financing & Service Delivery System

F.1. Dual Eligible Medicaid Financing & Service Delivery System

Dual Eligible* Medicaid System Characteristics			
Characteristics	Medicaid Fee-For-Service (FFS)	Managed Care-MLTSS Only	Medicare-Medicaid Alignment Initiative (MMAI) Dual Eligible Demonstration
Enrollment (January 2024)	135,806	59,746	89,250
Estimated SMI Enrollment	28,519	12,546	18,742
Management	Department of Healthcare and Family Services	<ul style="list-style-type: none"> Physical health: Department of Healthcare & Family Services LTSS & Behavioral Health: Six health plans 	Five health plans
Payment Model	FFS	<ul style="list-style-type: none"> Physical health: FFS LTSS & Behavioral Health: Capitated rate 	Blended capitated rate
Geographic Service Area	Statewide	Statewide	Greater Chicago and Central Illinois regions

Total Dual Eligible Enrollment: 284,802 | Total Dual Eligible Enrollment With SMI: 59,808

*Unless otherwise noted, the term *dual eligibles* in this section refers Medicare enrollees with full Medicaid benefits.

F.2. Largest Dual Eligible Health Plans By Estimated SMI Enrollment

Health Plans	Parent Company	Plan Type	January 2024 Enrollment	Estimated SMI Enrollment
Blue Cross Blue Shield of Illinois	Blue Cross and Blue Shield of Illinois	Medicare-Medicaid Alignment Initiative (MMAI)	19,432	2,254
MeridianComplete	Meridian Health Plans of Illinois Inc	MMAI	18,923	2,195
Aetna Better Health	Aetna/CVS	MMAI	18,581	2,155
Humana Health Plan	Humana, Inc	MMAI	16,342	1,896
Molina Dual Options	Molina Healthcare of Illinois, Inc	MMAI	15,972	1,853

Note: Illinois does not have any D-SNP or PACE plans.

F.3. Dual Eligible Medicaid Financing & Delivery System: Overview

- Dual eligible enrollment as of January 2024 was 284,802.
- Medicare covers most acute services (which may include psychiatric care), while Medicaid, the payer of last resort, covers long-term services or supports (LTSS) and non-physician behavioral health services.
- Dual eligibles in need of LTSS are required to enroll in Illinois HealthChoice, the state's Medicaid managed care program for LTSS and behavioral health services.
 - Dual eligibles who do not need LTSS have the option to remain in FFS.
- Dual eligibles, regardless of need for LTSS, have the option to enroll in the Medicare-Medicaid Alignment Initiative (MMAI) if they live in a demonstration county.

F.4. Dual Eligible Medicaid Financing & Delivery System: New Initiatives-

- There are currently no new or pending dual eligible initiatives in the state.

G. Long-Term Services & Supports Financing & Service Delivery System

G.1. LTSS Financing & Service Delivery System

LTSS* Medicaid System Characteristics	
Characteristics	Medicaid Managed Care
Enrollment (January 2024)	59,746
Estimated SMI Enrollment	19,693
Management	<ul style="list-style-type: none"> LTSS & Behavioral Health: Five health plans
Payment Model	<ul style="list-style-type: none"> LTSS & Behavioral Health: Capitated rate
Geographic Service Area	Statewide as of July 1, 2019

Total LTSS Enrollment: 59,746 | Total LTSS Enrollment With SMI: 12,546

*Long-Term Services & Supports

G.1. Medicaid LTSS Service Delivery System Enrollment By Eligibility Group

Population	Mandatory FFS Enrollment	Option To Enroll In FFS Or Managed Care	Mandatory Managed Care Enrollment
Disabled adults			X
Disabled children			X
Blind individuals			X
Aged individuals			X
Dual eligibles		Individuals not requiring LTSS services and also reside in a dual eligible demonstration regions.	Individuals requiring LTSS services are required to enroll in managed care
Individuals with I/DD			X
Individuals residing in nursing homes			X
Individuals residing in ICF/IDD			X
Other HCBS Recipients			X
Other populations	<ul style="list-style-type: none"> Limited benefits enrollees Individuals with third-party coverage Individuals eligible through spend-down Incarcerated or forensically institutionalized individuals 	<ul style="list-style-type: none"> Alaskan natives American Indigenous Peoples 	

G.2. LTSS Medicaid Financing & Delivery System: Overview

- Illinois HealthChoice is the state's Medicaid managed care program for LTSS and behavioral health services.
- In order to receive services through Illinois HealthChoice, individuals must be:
 - Full benefit dual eligibles
 - Reside in a nursing facility; or
 - Enrolled in one of the following HCBS waivers: Supportive Living Program, Persons with Disabilities, Persons with HIV or AIDS, Persons with Brain Injury, and Persons who are Elderly.
 - Individuals in the Breast and Cervical Cancer program are excluded from the program.
- All Illinois HealthChoice health plans must provide the MLTSS benefit package. For more information on the health plans see [section D.3](#).
 - Humana, which participates in the dual demonstration only, chose not to offer the HealthChoice Illinois MLTSS benefit package.

G.3. Medicaid LTSS Program: Health Plan Characteristics

Aetna Better Health
1. Profit status: For-profit
2. Parent company: Aetna/ CVS
3. Behavioral health subcontractor: None
4. Pharmacy benefits manager: CVS Caremark
5. Managed care programs: Medicare-Medicaid Alignment Initiative (MMAI), HealthChoice Illinois
6. Cook County only: No
7. Enrollment share: 15%

Blue Cross Blue Shield Of Illinois
1. Profit status: Non-profit
2. Parent company: Health Care Service Corporation
3. Behavioral health subcontractor: None
4. Pharmacy benefits manager: Prime Therapeutics
5. Managed care programs: HealthChoice Illinois, MMAI
6. Cook County only: No
7. Enrollment share: 24%

CountyCare Health Plan
1. Profit status: Non-profit
2. Parent company: Cook County Health and Hospitals System
3. Behavioral health subcontractor: None
4. Pharmacy benefits manager: CVS Caremark
5. Managed care programs: HealthChoice Illinois
6. Cook County only: Yes
7. Enrollment share: 14%

G.3. Medicaid LTSS Program: Health Plan Characteristics

Meridian Health Plan Of Illinois

1. Profit status: For-profit
2. Parent company: Centene-WellCare
3. Behavioral health subcontractor: Cenpatico
4. Pharmacy benefits manager: ExpressScripts
5. Managed care programs: HealthChoice Illinois, MMAI
6. Cook County only: No
7. Enrollment share: 34%

Molina Healthcare of Illinois

1. Profit status: For-profit
2. Parent company: Molina
3. Behavioral health subcontractor: None
4. Pharmacy benefits manager: None
5. Managed care programs: HealthChoice Illinois, MMAI
6. Cook County only: No
7. Enrollment share: 12%

G.4. Medicaid LTSS Program: Health Benefits

HealthChoice Illinois MLTSS Benefits Package

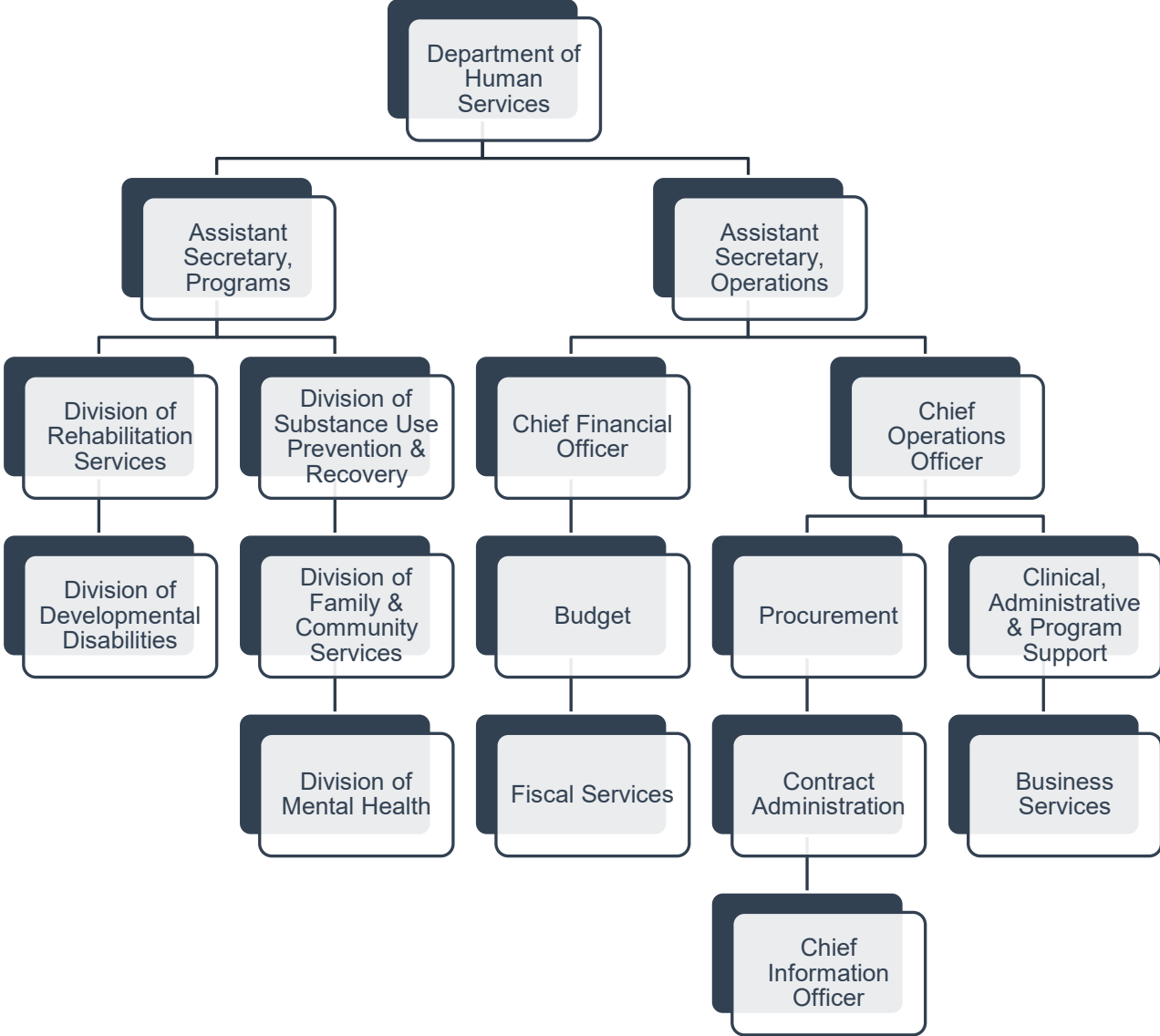
1. Mental health rehabilitation option services
2. Alcohol and substance abuse rehabilitation services
3. Mental health targeted case management
4. Exceptional care
5. Non-emergency medical transportation
6. Social work services
7. Psychologist services
8. Skilled and intermediate long-term care
9. Licensed clinical professional counselor
10. Homemaker
11. Agency provided nursing therapies
12. Adult day health
13. Habilitation services
14. Respite care

G.5. LTSS Medicaid Financing & Delivery System: New Initiatives- I/DD System Transformation

- The Illinois Department of Human Services (IDHS) is launching an initiative to transform care for individuals with intellectual and developmental disabilities (I/DD) who live at one of the state's developmental centers.
 - Governor J.B. Pritzker increased funding for the IDHS home- and community-based system by \$800 million in the FY 2023 budget to support the transformation, bringing IDHS total funding to \$1.7 billion.
- The initiative will initially focus on the Choate Mental Health and Developmental Center (Choate). IDHS will expand community-based capacity statewide with the goal of reducing the number of developmental center residents and will work to improve staffing ratios for those who remain at the developmental centers.
- The comprehensive plan includes:
 - Repurposing Choate over three years in partnership with the Southern Illinois University School of Medicine.
 - Implementing new safety enhancements at Choate and across all State-Operated Developmental Centers including appointing a Chief Resident Safety Officer.
 - Expanding support for transitioning families and individuals to pursue opportunities for community-based living while continuing to invest in provider organization capacity.
- To repurpose Choate, most of the approximately 233 current I/DD residents at the Choate Center in Anna, Illinois will have the opportunity to safely and gradually transition into community-based settings or other state centers where they will receive comprehensive personalized care.
 - As I/DD residents transition, IDHS will repurpose the Choate campus to serve other populations. Currently, the IDHS Division of Mental Health operates a small psychiatric facility on the Choate campus.

H. State Behavioral Health Administration & Finance System

H.1. Department Of Human Services: Organization Chart



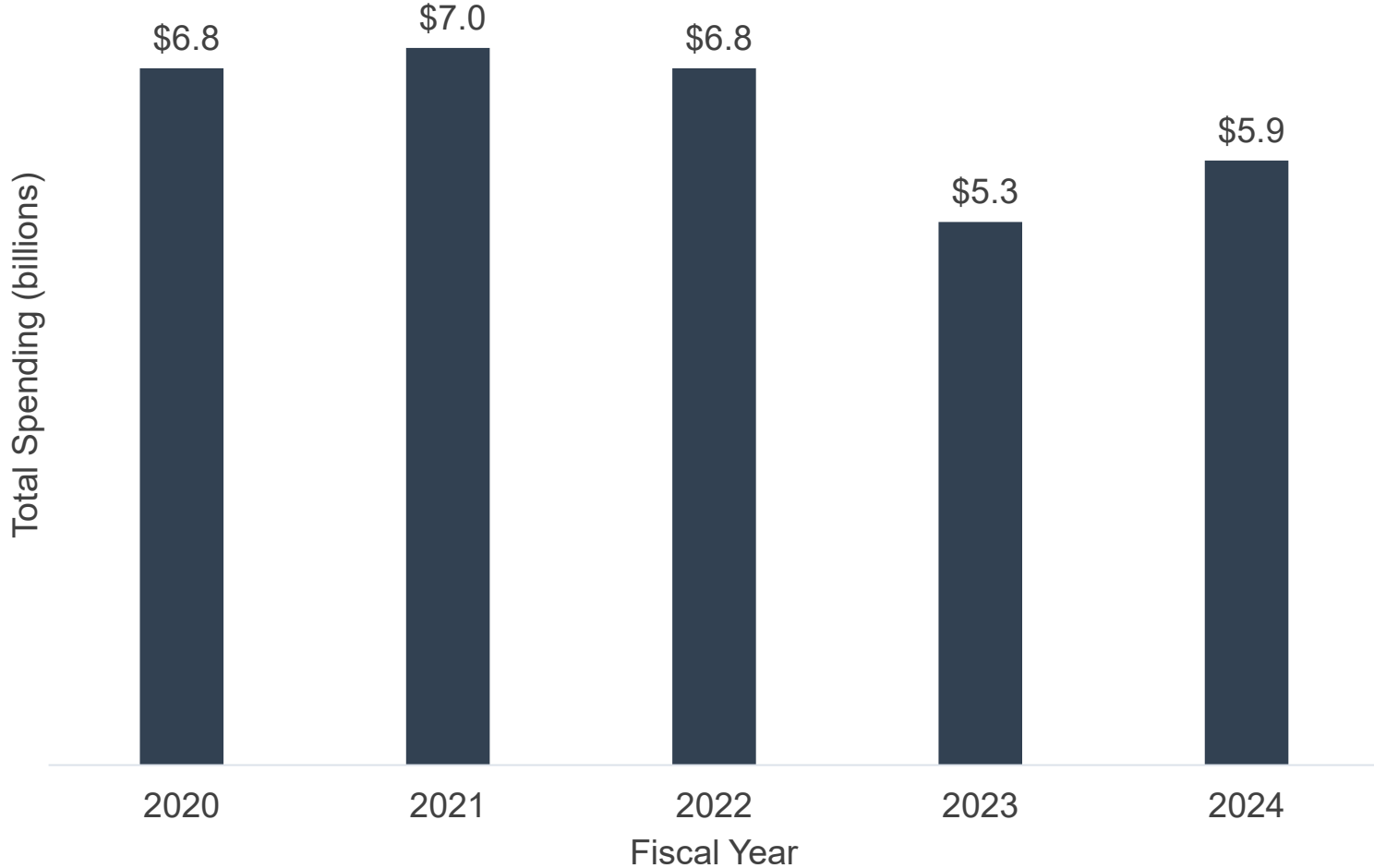
H.1. Department Of Human Services: Key Leadership

Name	Position	Department	Email
Dulce Quintero	Secretary Designate	Department of Human Services (DHS)	dulce.quintero@illinois.gov
Ryan Thomas	Acting Assistant Secretary of Operations	DHS	ryan.thomas@illinois.gov
Laura Garcia	Director	Division of Substance Use Prevention and Recovery	laura.garcia@illinois.gov
David Albert	Director	Division of Mental Health	david.albert@illinois.gov
Tim Verry	Director	Division of Family and Community Services	tim.verry@illinois.gov
Rahnee Patrick	Director	Division of Rehabilitation Services	rahnee.patrick@illinois.gov
Tonya Piephoff	Director	Division of Developmental Disabilities	tonya.piephoff@illinois.gov

H.2. Department Of Human Services: Spending

Budget Item	SFY 2024 Budget Request	Percent Of Budget
Family and community services Grants & Operations	\$2,357,371,400	40%
Developmental disability Grants & Operations	\$2,042,589,300	34%
Substance use prevention and recovery	\$610,042,700	10%
Mental health Grants & Operations	\$542,823,700	9%
Mental Health Centers	\$325,616,600	5%
Administration & Program Support	\$ 62,521,000	1%
Budget Total: \$5,940,964,700		

H.2. Department Of Human Services: Spending Over Time



H.3. State Psychiatric Institutions

State Psychiatric Institutions				
Institution	Location	Beds	FY 2023 Unduplicated Persons Served	June 20, 2023 Census
Alton Mental Health Center	Alton	125	210	113
Chester Mental Health Center	Chester	302	536	287
Chicago-Read Mental Health Center	Chicago	148	328	159
Choate Mental Health Center (includes I/DD)	Anna	79	368	266
Elgin Mental Health Center	Elgin	419	856	400
Madden Mental Health Center	Hines	173	1,619	82
Packard Mental Health Center	Springfield	146	278	126
Total		1,392	4,195	1,433

H.4. Behavioral Health Safety-Net Delivery System

- The Illinois Department of Human Services (DHS) Division of Mental Health (DMH) contracts with community mental health centers and agencies to provide mental health services to the safety-net population.
- The Illinois Mental Health Collaborative, operated by Beacon Health Options, is the administrative services organization that provides utilization management, manages provider contracting, and produces reports for safety-net services.
- DHS is also the agency responsible for funding and administering addiction treatment programs for the safety-net population.
- Within DHS, the Division of Alcoholism and Substance Abuse (DASA) contracts with community-based organizations to maintain a statewide addiction treatment safety-net.

H.5. Behavioral Health System: New Initiatives- Children's Behavioral Health Transformation

- In January 2024, the Illinois Department of Human Services announced it is partnering with Google to launch a new centralized portal for children's mental health care.
 - DHS and Google plan to set up an online portal so Illinois families can have easier access to mental health care options for children.
- In 2022, DHS started the Illinois Children's Behavioral Health Transformation Initiative. One of its goals was to streamline the health care services available to children and families in Illinois and to help the six agencies that deal with mental healthcare for children in the state to coordinate their efforts.
- The new online portal, named BEACON, short for Behavioral Health Care and Ongoing Navigation, will use artificial intelligence to better route families to the care they need.
 - The portal is expected to be functional by Summer 2024.

I. Appendices

I.1. OPEN MINDS Estimates For Share Of SMI Consumers Per Payer/Plan

Enrollment Category	Serious Mental Illness (SMI) Prevalence Estimate	Source
Commercial	4.2% of the commercially insured population over age 18	Substance Abuse and Mental Health Services Administration. (2022). Results from the 2021 National Survey on Drug Use and Health: Mental Health detailed Tables. Retrieved March 2023 from https://www.samhsa.gov/data/sites/default/files/reports/rpt39441/NSDUHDetailedTabs2021/NSDUHDetailedTabs2021/NSDUHDetTabsSect6pe2021.htm#tab6.8a
Medicaid	11.6% of persons enrolled in traditional Medicaid	Substance Abuse and Mental Health Services Administration. (2022). Results from the 2021 National Survey on Drug Use and Health: Mental Health detailed Tables. Retrieved March 2023 from https://www.samhsa.gov/data/sites/default/files/reports/rpt39441/NSDUHDetailedTabs2021/NSDUHDetailedTabs2021/NSDUHDetTabsSect6pe2021.htm#tab6.8a
Medicare	22.7% of persons in the Medicare population, not dually eligible for Medicaid	Figuroa, J. F., Phelan, J., Orav, E. J., Patel, V., & Jha, A. K. (2020). Association of mental health disorders with health care spending in the Medicare population. Retrieved July 2023 from https://jamanetwork.com/journals/jamanetworkopen/fullarticle/2762948#:~:text=Results%20Of%204%20358%20975,had%20no%20known%20mental%20illness

I.1. OPEN MINDS Estimates For Share Of SMI Consumers Per Payer/Plan

Enrollment Category	Serious Mental Illness (SMI) Prevalence Estimate	Source
Medicare-Medicaid Dual Eligibility	21% of persons in the Medicare population dually eligible for partial Medicaid benefits	ATI Advisory. (2022). A Profile of Medicare-Medicaid Dual Beneficiaries. Retrieved March 2023 from https://atiadvisory.com/wp-content/uploads/2022/06/A-Profile-of-Medicare-Medicaid-Dual-Beneficiaries.pdf
	16% of persons in the Medicare population dually eligible for full Medicaid benefits	
Other Public	4.5% of persons served by the Veterans Administration health care system or the TRICARE military health system	U.S. Census Bureau (2022). Table HHI-01. Health Insurance Coverage Status and Type of Coverage--All Persons by Sex, Race and Hispanic Origin: 2017 to 2021. Retrieved March 2023 from https://www2.census.gov/programssurveys/demo/tables/health-insurance/time-series/hic/hhi01.xlsx
No Health Care Insurance	6.2% of uninsured persons over age 18	Substance Abuse and Mental Health Services Administration. (2022). Results from the 2021 National Survey on Drug Use and Health: Mental Health detailed Tables. Retrieved March 2023 from https://www.samhsa.gov/data/sites/default/files/reports/rpt39441/NSDUHDetailedTabs2021/NSDUHDetailedTabs2021/NSDUHDetailedTabsSect6pe2021.htm#tab6.8a

I.2. Glossary Of Terms

Word	Abbreviation	Definition
Alternative Benefit Plan	ABP	State designed benefit package for the Medicaid expansion population (childless adults with income below 138% of the FPL). The benefit package must include the ten essential benefits as laid out in the PPACA. The Medicaid expansion population deemed medically frail (including those with SMI) are exempt from receiving benefits through the ABP.
Accountable Care Organizations	ACO	ACOs are groups of provider organizations—such as physicians and hospital systems—that form an agreement to coordinate care for a set group of individuals. If the ACO delivers high quality care—measured through performance metrics—and lowers the cost of providing care against a baseline, then the organization receives a portion of the savings generated. ACOs can exist alongside all payment structures (fee-for-service and managed care delivery systems) and payers (Medicare, Medicaid, commercial).
Administrative Services Organization	ASO	An arrangement in which an organization hires a third party to deliver administrative services to the organization, such as claims processing and billing. The ASO is not at-risk.
Capitation		A set amount of money paid per enrollee per month to a health care entity to cover the cost of health care services. Capitation can cover the cost of all health care services or subset of services, such as care coordination or home- and community-based services.
Carve-out		A carve-out is a Medicaid managed care financing model where some portion of Medicaid benefits—dental services, pharmacy services, behavioral health services, etc.—are separately managed and/or financed. Carve-out services can be financed on an at-risk basis by another organization or retained by the state Medicaid agency on a fee-for-service basis.
Certified Community Behavioral Health Clinic	CCBHC	Behavioral health clinics specially certified in a demonstration established by section 223 of the Protecting Access to Medicare Act of 2014. The clinics are designed to provide community-based mental health and addiction treatment services, to advance the integration of behavioral health with physical health care, and to provide care coordination across the full spectrum of health services.

I.2. Glossary Of Terms

Word	Abbreviation	Definition
Community Mental Health Center	CMHC	An organization that can demonstrate that it is actively providing all services in section 1913(c)(l) of the Public Health Services Act, including a.) Outpatient services, including specialized outpatient services for children, the elderly, individuals who are chronically mentally ill, and residents of the CMHC’s mental health service area who have been discharged from inpatient treatment at a mental health facility; b.) 24 hour-a-day emergency care services; c.) Day treatment, or other partial hospitalization services, or psychosocial rehabilitation services; and d.) Screening for patients being considered for admission to state mental health facilities to determine the appropriateness of such admission. Additionally, the organization must meet the specifications for the state where it provides services.
Dual Eligible		An individual who is eligible for Medicare (Part A and B) and Medicaid. Medicare serves as the individual's primary insurance, and Medicaid acts as a supplement. Dual eligibles are sometimes referred to as Medicare-Medicaid enrollees (MMEs).
Federal Poverty Level	FPL	The U.S. Department of Health and Human Services sets a standard level of income that is used to determine eligibility for services and benefits, including Medicaid. In 2024, the FPL is \$14,580 for an individual and \$30,000 for a family of four.
Fee-For-Service	FFS	A system where the payer, in this case Medicaid, contracts directly with provider organizations and pays for providing care on a unit-by-unit basis. Health plans may also reimburse provider organizations on a FFS basis meaning they pay for each unit of care or test.
Health Home		A “whole person” care coordination model that specifically targets populations with chronic conditions including those with SMI. Health homes provide six essential functions: 1.) Comprehensive care management; 2.) Care coordination and health promotion; 3.) Comprehensive transitional care from inpatient to other settings, including appropriate follow-up; 4.) Individual and family support; 5.) Referral to community and social support services; 6.) Use of health information technology to link services. Health homes were originally developed as a Medicaid program, but have been adopted by other payers. For a state to have an official health home program they must have an approved state plan amendment.

I.2. Glossary Of Terms

Word	Abbreviation	Definition
Health Insurance Marketplace	HIM	Created by the PPACA, the health insurance marketplace is an online platform where individuals and small businesses can purchase health insurance. The federal government subsidizes coverage purchased on the marketplace through premium tax credits for individuals with income up to 400% of the FPL.
Home- & Community-Based Services	HCBS	Long-term services and supports provided in the home or community in order to avoid institutionalization. Traditionally provided through 1915(c) waivers, HCBS services are usually limited to specific populations and a specific number of people. HCBS services include skilled nursing care, personnel care services, assistance with activities of daily living, and custodial care.
Institutions For Mental Disease	IMD	A hospital, nursing facility, or other institution of more than 16 beds that is primarily engaged in providing diagnosis, treatment, or care of persons with mental diseases, including addiction. Federal financial participation is available for Medicaid IMD services for individuals under the age of 21 and age 65 and over. In recent years, CMS has relaxed the rules prohibiting payments in IMDs for individuals age 21-64. Medicaid health plans may provide up to 15 days of IMD services per month in lieu of state plan services if medically appropriate, cost effective, and consented to by the individual. Additionally, states may be granted a 1115 waiver authority to allow individuals to receive addiction and mental health treatment in IMDs.
Long-Term Services & Supports	LTSS	Services provided in the home, community, or institutional setting to those who experience difficulty living independently and completing activities of daily living as a result of cognitive disabilities, physical impairments, disabling chronic conditions, and/or age.
Managed Care		A health care delivery and financing system designed to manage cost, utilization, and quality. In Medicaid, states generally implement managed care through contracts with health plans, which provide a limited set of benefits to enrollees through a capitated or per person per month (PMPM) rate. The health plans generally assumes full-risk for the cost of treatment, and therefore contracts with a network of provider organizations to provide care at the most efficient rate possible while still maintaining member health.

I.2. Glossary Of Terms

Word	Abbreviation	Definition
Medicaid		Medicaid is a joint federal-state program that provides health coverage to economically disadvantaged populations, such as low-income adults, children, and aged, blind, and disabled (ABD) individuals. States establish their own eligibility standards, benefit packages, provider payment policies, and administrative structures under broad federal guidelines. Financing is a shared responsibility of the federal government and the states.
Medicaid Waiver		Granted by CMS, waivers allow states to make temporary changes to their Medicaid program in order to test out new ways to deliver health coverage.
Medicaid Waiver Section 1115	1115 waiver	Known as research and demonstration waivers, states can apply for program flexibility to test new or existing approaches to financing and delivering Medicaid and CHIP.
Medicaid Waiver Section 1915(b)	1915(b) waiver	States can apply for waivers to provide services through managed care delivery systems, or otherwise limit an individual's choice of health plan or provider organization.
Medicaid Waiver Section 1915(c)	1915(c) waiver	States can apply for waivers to provide long-term care services in home- and community-based settings, rather than institutional settings.
Medical Home		A medical home is not a physical place, but a model for care coordination. Medical homes provide primary care services, care coordination, enhanced access to care, and care that is culturally and linguistically appropriate. Medical homes exist across multiple payers.
Medicare		Federal health insurance for individuals over the age of 65, individuals with certain disabilities, and individuals with end stage renal disease. Medicare covers most acute care services (which may include psychiatric care), but does not cover LTSS or non-physician behavioral health services.
Medicare Advantage	MA	Medicare Part C - also known as Medicare Advantage - is a program which allows individuals who are eligible for Medicare Parts A and B to elect a private health plan to provide their Medicare coverage. The federal government pays the plan's premiums up to a set level, and individuals are responsible for the difference.

I.2. Glossary Of Terms

Word	Abbreviation	Definition
Medicare Advantage Special Needs Plan	SNP	A special type of Medicare Advantage plan that is designed to provide targeted coordinated care to individuals who are a) institutionalized; b) dual eligible; and/or c) meet the severe chronic disabled conditions set forth by CMS. Plans emphasize improved care primarily through continuity of care and care coordination.
Medicare Part A		Hospital Insurance: Covers hospital, skilled nursing care, hospice, and home health care for most eligible individuals at no cost. Financed through payroll tax and deductibles, copayments are only charged if a stay becomes long-term.
Medicare Part B		Supplementary Medical Insurance: Covers most outpatient services, and consumers pay a premium based on income level.
Medicare Part C		Medicare Part C - also known as Medicare Advantage - is a program which allows individuals who are eligible for Medicare Parts A and B to elect a private health plan to provide their Medicare coverage. The federal government pays the plan's premiums up to a set level, and individuals are responsible for the difference.
Medicare Part D		Outpatient Prescription Drug Benefit: Private plans contract with Medicare to provide coverage for prescription drugs. Most consumers pay premiums based on their income.
Metropolitan Statistical Area	MSA	An urbanized area with a population of at least 50,000 plus adjacent territory that has a high degree of social and economic integration as measured by commuting ties.
Patient-Centered Medical Home	PCMH	See Medical Home.
Patient Protection & Affordable Care Act	PPACA or ACA	U.S. health care reform signed into law in 2010. The legislation regulates certain aspects of private and public health insurance programs and authorizes an individual mandate to secure essential health coverage, premium tax credits for the purchase of private health insurance, and increased insurance coverage of preexisting conditions. In 2012 the Supreme Court ruled that state participation is optional for provisions of the law expanding Medicaid coverage to adults ages 18 to 64 with incomes under 138% of the FPL. In 2017, Congress repealed the tax penalties associated with the individual mandate essentially ending the mandate.

I.2. Glossary Of Terms

Word	Abbreviation	Definition
Primary Care Case Management	PCCM	A health care delivery system model with limited utilization and cost control. Under the PCCM model, Medicaid enrollees choose a primary care physician who acts as a gatekeeper for more intensive services. The primary care physician generally receives a per person per month (PMPM) fee for care coordination and is reimbursed fee-for-service for all medical services provided.
Program Of All Inclusive Care For The Elderly	PACE	PACE serves populations over the age of 55 who are eligible for skilled nursing home care by utilizing a comprehensive delivery system of social, medical, and long-term care services to keep enrollees in the community for as long as possible. PACE is an optional state Medicaid program, and may only be available in certain states, or regions within states.
Serious Mental Illness	SMI	A mental, behavioral, or emotional disorder that lasts for a sufficient duration of time and causes impairment of major life activities. Serious mental illnesses include major depression, schizophrenia, bipolar disorder, obsessive compulsive disorder (OCD), panic disorder, post traumatic stress disorder (PTSD), and borderline personality disorder.
Supported Employment		Provides services and supports to help individuals with disabilities become employed in an integrated or competitive work environment and retain that employment.
Supported Housing		Housing provided for as long as needed at little or no cost to individuals with mental illness, or other vulnerable populations who are homeless or at-risk for homelessness. Mental health and social services are offered to participants but are not a condition for participation in the program. The goal is to allow individuals to live as self-sufficient, independent lives as possible.
Value-Based Reimbursement	VBR	Reimbursement model in which payers financially reward or penalize health care provider organizations for performance on quality and cost of care. VBR payment mechanisms include P4P; capitation; shared savings models; shared risk models; and payments based on clinically-defined episodes, called episodes of care or bundled payments.

I.3. Sources

A. Executive Summary

1. Information compiled from sources provided throughout the profile.

B.1. Population Demographics

1. United States Census Bureau. (2021). 2022 American Community Survey 1-Year Estimates S0101 Population By Age and Sex. Retrieved April 2024 from <https://data.census.gov/cedsci/table?q=S0101>
2. United States Census Bureau. (2021). 2022 Current Population Survey Annual Social and Economic Supplement POV-46 Poverty Status By State. Retrieved April 2024 from <https://data.census.gov/cedsci/table?q=S1701>
3. United States Census Bureau. (2021). 2022 American Community Survey 1-Year Estimates S1901 Median Income In the Past 12 Months. Retrieved April 2024 from <https://data.census.gov/cedsci/table?q=S1901>
4. United States Census Bureau. (2021). 2022 Population Distribution by Race/Ethnicity. Retrieved April 2024 from <https://data.census.gov/cedsci/table?q=DP05&tid=ACSDP5Y2020.DP05>

B.2. Population Centers

1. Federal Reserve Bank of St Louis. (2022, March) US Regional Data, MSAs. Retrieved January 2023 from <https://fred.stlouisfed.org>
2. U.S. Census Bureau. (2021). 2021 TIGER/Line® Shapefiles: Core Based Statistical Areas. Retrieved April 2024 from <https://www.census.gov/cgi-bin/geo/shapefiles/index.php?year=2021&layergroup=Core+Based+Statistical+Areas>
3. U.S. Census Bureau. (2021). 2021 TIGER/Line® Shapefiles: Core Based Statistical Areas. Retrieved April 2024 from <https://www.census.gov/cgi-bin/geo/shapefiles/index.php?year=2019&layergroup=Core+Based+Statistical+Areas>
4. U.S. Census Bureau. (2021). 2021 TIGER/Line® Shapefiles: States (and equivalent). Retrieved April 2024 from <https://www.census.gov/cgi-bin/geo/shapefiles/index.php?year=2019&layergroup=States+%28and+equivalent%29>
5. United States Census Bureau. (2021). 2021 Annual Estimates of Residential Population-Metropolitan and Micropolitan Statistical Area GCT-PEPANNRES. Retrieved April 2024 from <https://www.census.gov/data/tables/time-series/demo/popest/2010s-total-metro-and-micro-statistical-areas.html>

I.3. Sources

B.3. Population Distribution By Payer: National vs. State

1. OPEN MINDS. (2024). Serious Mental Illness Prevalence Estimates.
2. Tricare, 2023 Beneficiaries. Retrieved April 2024. <https://www.health.mil/I-Am-A/Media/Media-Center/Patient-Population-Statistics/Patient-Numbers-By-State>
3. CMS, MMCO Statistical & Analytic Reports, Quarterly Release (January 2024). Retrieved April 2024. <https://www.cms.gov/Medicare-Medicaid-Coordination/Medicare-and-Medicaid-Coordination/Medicare-Medicaid-Coordination-Office/Analytics>
4. Kaiser Family Foundation, Health Coverage & Uninsured, Health Insurance Coverage of the Total Population (2020). Retrieved April 2024. <https://www.kff.org/other/state-indicator/health-insurance-coverage-of-the-total-population-cps/?dataView=1¤tTimeframe=0&sortModel=%7B%22colId%22:%22Location%22,%22sort%22:%22asc%22%7D>

B.3. SMI Population Distribution By Payer: National vs. State

1. OPEN MINDS. (2024). Serious Mental Illness Prevalence Estimates.

B.4. Largest State Health Plans By Enrollment

1. OPEN MINDS. (2023, December). Health Plans Database.
2. TRICARE. (2023, December). Beneficiaries by Location. Retrieved April 2024 from <https://www.health.mil/Military-Health-Topics/MHS-Toolkits/Media-Resources/Media-Center/Patient-Population-Statistics/Patient-Numbers-By-State>
3. Health Plans USA. (2024). Subscription Database. www.markfarrah.com

B.4. Largest State Health Plans By Estimated SMI Enrollment

1. OPEN MINDS. (2023, December). Health Plans Database.
2. TRICARE. (2023, December). Beneficiaries by Location. Retrieved April 2024 from <https://www.health.mil/Military-Health-Topics/MHS-Toolkits/Media-Resources/Media-Center/Patient-Population-Statistics/Patient-Numbers-By-State>
3. Health Plans USA. (2024). Subscription Database. www.markfarrah.com

B.5. Health Insurance Marketplace

1. United States Department of Health and Human Services. (2023, October 21). PY2024 Individual Medical Landscape. Retrieved April 2024 from <https://data.healthcare.gov/dataset/2cfb30f4-7c65-42bd-bc4c-a3fbcf1cb2cd>
2. United States Department of Health and Human Services. (2023, October 21). QHP Landscape PY2024 SHOP Market Medical. Retrieved April 2024 from <https://catalog.data.gov/dataset/qhp-landscape-py2024-medical-shop>

I.3. Sources

B.6. ACOs

1. OPEN MINDS. (2023). ACO Database.

C.1. Medicaid Governance: Organizational Chart

1. Illinois Department of Healthcare & Family Services. (2021). HFS: About Us. Retrieved April 2024 from <https://hfs.illinois.gov/about.html>
2. Centers for Medicare and Medicaid Services. (2014, March 28). Illinois Department of Healthcare & Family Services Organizational Chart. Retrieved April 2024 from <https://www.medicare.gov/sites/default/files/State-resource-center/Medicaid-State-Plan-Amendments/Downloads/IL/IL-13-0013-MM4.pdf>

C.1. Medicaid Governance: Key Leadership

1. Illinois Department of Healthcare & Family Services. (2021). HFS Executive Staff. Retrieved April 2024 from <https://hfs.illinois.gov/about/executivestaff.html>

C.2. Medicaid Program Spending By Eligibility Group

1. Centers for Medicare and Medicaid Services. (2023, December). MACStats: Medicaid and CHIP Data Book. Retrieved April 2024 from <https://www.macpac.gov/macstats/>
2. Centers for Medicare and Medicaid Services. (2022, December). MACStats: Medicaid and CHIP Data Book. Retrieved April 2024 from <https://www.macpac.gov/macstats/>

C.2. Medicaid Program Spending: Budget

1. United States Government Printing Office. (2023, November 28). Federal Medical Assistance Percentages FY 2024. Retrieved April 2024 from <https://www.federalregister.gov/documents/2018/11/28/2018-25944/federal-financial-participation-in-state-assistance-expenditures-federal-matching-shares-for>
2. Centers for Medicare and Medicaid Services. (2023, December). MACStats: Medicaid and CHIP Data Book. Retrieved April 2024 from <https://www.macpac.gov/macstats/>
3. Centers for Medicare and Medicaid Services. (2013, March 29). Increased Federal Medical Assistance Percentage Through the Affordable Care Act of 2010. Retrieved April 2024 from <https://www.cms.gov/Newsroom/MediaReleaseDatabase/Fact-sheets/2013-Fact-sheets-items/2013-03-29.html>

I.3. Sources

C.2. Medicaid Program Spending: Change Over Time

1. Centers for Medicare and Medicaid Services. (2023, December). MACStats: Medicaid and CHIP Data Book. Retrieved April 2024 from <https://www.macpac.gov/macstats/>
2. Centers for Medicare and Medicaid Services. (2023, December). MACStats: Medicaid and CHIP Data Book. Retrieved April 2024 from <https://www.macpac.gov/macstats/>
3. Centers for Medicare and Medicaid Services. (2021, December). MACStats: Medicaid and CHIP Data Book. Retrieved April 2024 from <https://www.macpac.gov/macstats/>
4. Medicaid and CHIP Payment and Access Commission. (2020, December). MACStats: Medicaid and CHIP Data Book. Retrieved April 2024 from <https://www.macpac.gov/publication/macstats-archive/>
5. Medicaid and CHIP Payment and Access Commission. (2019, December). MACStats: Medicaid and CHIP Data Book. Retrieved April 2024 from <https://www.macpac.gov/publication/macstats-archive/>
6. Medicaid and CHIP Payment and Access Commission. (2018, December). MACStats: Medicaid and CHIP Data Book. Retrieved April 2024 from <https://www.macpac.gov/publication/macstats-archive/>
7. Medicaid and CHIP Payment and Access Commission. (2017, March). MACStats: Medicaid and CHIP Program Statistics. Retrieved April 2024 from <https://www.macpac.gov/publication/macstats-archive/>
8. Medicaid and CHIP Payment and Access Commission. (2016, March). MACStats: Medicaid and CHIP Program Statistics. Retrieved April 2024 from <https://www.macpac.gov/publication/macstats-archive/>

C.3. Medicaid Expansion Status

1. Centers for Medicare and Medicaid Services. (2023, December). MACStats: Medicaid and CHIP Data Book. Retrieved April 2024 from <https://www.macpac.gov/macstats/>
2. Centers for Medicare and Medicaid Services. (2022, December). MACStats: Medicaid and CHIP Data Book. Retrieved April 2024 from <https://www.macpac.gov/macstats/>
3. Centers for Medicare and Medicaid Services. (2024, January). Medicaid Enrollment Data Collected Through MBES 2024 Q1. Retrieved April 2024 from <https://www.medicaid.gov/medicaid/program-information/medicaid-and-chip-enrollment-data/enrollment-mbes/index.html>
4. Centers for Medicare and Medicaid Services. (2020, October). Medicaid, Children's Health Insurance Program & Basic Health Program Eligibility Levels. Retrieved April 2024 from <https://www.medicaid.gov/medicaid/program-information/medicaid-and-chip-eligibility-levels/index.html>
5. US Government Publishing Office. (2011, October 1). Code of Federal Regulations Title 42. Retrieved April 2024 from <https://www.gpo.gov/fdsys/granule/CFR-2011-title42-vol4/CFR-2011-title42-vol4-sec440-315>

C.4. Medicaid Program Benefits

1. Medicaid and CHIP Payment and Access Commission. Mandatory and Optional Benefits. Retrieved April 2024 from <https://www.macpac.gov/subtopic/mandatory-and-optional-benefits/>

I.3. Sources

D.1. Medicaid Financing & Service Delivery System

1. Illinois Department of Healthcare and Family Services. (2021, January 1). Managed Care Contracts. Retrieved April 2024 from <https://hfs.illinois.gov/medicalproviders/cc/managedcarecontracts.html>
2. Illinois Department of Healthcare and Family Services. (2023, June 1). Managed Care Map. Retrieved April 2024 from <https://hfs.illinois.gov/content/dam/soi/en/web/hfs/sitecollectiondocuments/mapofmanagedcare06012023.pdf?wcmmode=disabled>
3. Centers for Medicare and Medicaid. December 2023 Medicaid & CHIP Enrollment Data Highlights. Retrieved April 2024 from <https://www.medicare.gov/medicaid/program-information/medicaid-and-chip-enrollment-data/report-highlights/index.html>
4. Illinois Department of Healthcare and Family Services. (2023, January). Managed Care Enrollment. Retrieved April 2024 from <https://hfs.illinois.gov/info/factsfigures/detailedmanagedcareenrollment.html>

D.1. Medicaid Service Delivery System Enrollment By Eligibility Group

1. Illinois Department of Healthcare and Family Services. (2018, October 4). State Plan Amendment (SPA) #: 18-0001. Retrieved April 2024 from <https://www.medicare.gov/State-resource-center/Medicaid-State-Plan-Amendments/Downloads/IL/IL-18-0001.pdf>
2. Illinois Department of Healthcare and Family Services. (2019, February 1). Medicaid Advisory Committee April 2024. Retrieved April 2024 from <https://hfs.illinois.gov/about/boardsandcommissions/mac-home.html>

D.2. Medicaid FFS Program: Overview

1. Illinois Department of Healthcare and Family Services. (2023, January). Managed Care Enrollment. Retrieved April 2024 from <https://hfs.illinois.gov/info/factsfigures/detailedmanagedcareenrollment.html>

D.2. Medicaid FFS Program: Behavioral Health Benefits

1. Illinois Department of Healthcare and Family Services. (2018, August 16). Illinois Behavioral Health Transformation. Retrieved April 2024 from <https://www.medicare.gov/medicaid/section-1115-demo/demonstration-and-waiver-list/81581>
2. Illinois Department of Healthcare and Family Services. Illinois Administrative Code: Section 140.453 Community-based Mental Health Service Definitions and Professional Qualifications. Retrieved April 2024 from <http://www.ilga.gov/commission/jcar/admincode/089/089001400D04530R.html>
3. Illinois Department of Healthcare and Family Services. (2021, June 16). Handbook for Practitioners Rendering Medical Services. Retrieved April 2024 from <https://hfs.illinois.gov/content/dam/soi/en/web/hfs/sitecollectiondocuments/06162021practitionerhdbkpolicyapnasrenderingchangesfinal.pdf>
4. Illinois Department of Healthcare and Family Services. (2020, January 17). Transmittal #19-0017. Retrieved April 2024 from https://www.medicare.gov/sites/default/files/State-resource-center/Medicaid-State-Plan-Amendments/Downloads/IL/IL-19-0017_0.pdf

I.3. Sources

D.2. Medicaid FFS Program: SMI Population

1. Illinois Department of Healthcare and Family Services. (2023, January). Managed Care Enrollment. Retrieved April 2024 from <https://hfs.illinois.gov/info/factsfigures/detailedmanagedcareenrollment.html>
2. OPEN MINDS. (2024). Serious Mental Illness Prevalence Estimates.

D.2. Medicaid FFS Program: Pharmacy Benefits

1. Illinois Department of Healthcare and Family Services. (2021, April 1). Preferred Drug List Illinois Medicaid. Retrieved April 2024 from <https://hfs.illinois.gov/medicalproviders/pharmacy/preferred.html>
2. Illinois Department of Healthcare and Family Services. (2017, September). Handbook for Providers of Medical Services. Retrieved April 2024 from <https://hfs.illinois.gov/content/dam/soi/en/web/hfs/sitecollectiondocuments/050415erchandbookd200.pdf>
3. Illinois Department of Healthcare and Family Services. Drug Search. Retrieved April 2024 from <https://ilpriorauth.com/>
4. Illinois Department of Healthcare and Family Services. (2020, April). FY 20 Medical Assistance Program Annual Report. Retrieved April 2024 from <https://hfs.illinois.gov/info/reports.html>
5. CountyCare. (2024) Preferred Drug List. Retrieved April 2024 from <https://countycare.com/providers/preferred-drug-list/>

D.3. Medicaid Managed Care Program: Overview

1. Illinois Department of Healthcare and Family Services. (2018, October 4). State Plan Amendment (SPA) #: 18-0001. Retrieved April 2024 from <https://www.medicaid.gov/State-resource-center/Medicaid-State-Plan-Amendments/Downloads/IL/IL-18-0001.pdf>
2. Illinois Department of Healthcare and Family Services. State of Illinois Model Contract. Retrieved April 2024 from <https://hfs.illinois.gov/medicalproviders/cc/managedcarecontracts.html>
3. Illinois Department of Healthcare and Family Services. (2018, March 29). HealthChoice Illinois Expansion - Schedule Update. Retrieved April 2024 from <https://www2.illinois.gov/hfs/MedicalProviders/xxcc/Pages/HealthChoiceFAQ.aspx>
4. Illinois Department of Healthcare and Family Services. (2023, January). Managed Care Enrollment. Retrieved April 2024 from <https://hfs.illinois.gov/info/factsfigures/detailedmanagedcareenrollment.html>

I.3. Sources

D.3. Medicaid Managed Care Program: Health Plan Characteristics

1. Aetna Better Health. Provider Manual. Retrieved April 2024 from <https://www.aetnabetterhealth.com/content/dam/aetna/medicaid/illinois/providers/pdf/Aetna%20Better%20Health%20of%20Illinois%20Provider%20Manual.pdf>
2. Blue Cross Blue Shield of Illinois. (2020). Provider Manual. Retrieved April 2024 from <https://www.bcbsil.com/provider/standards/standard-requirements/manual>
3. Illinois Department of Healthcare and Family Services. Managed Care Manual. Retrieved April 2024 from <https://hfs.illinois.gov/medicalproviders/handbooks.html>
4. Humana. Provider Manual. Retrieved April 2024 from <https://docushare-web.apps.external.pioneer.humana.com/Marketing/docushare-app?file=4619199>
5. Meridian Health (2020, March). Provider Manual. Retrieved April 2024 from <https://corp.mhplan.com/ContentDocuments/default.aspx?x=UyKZ38ovV+V/M/jpW2ZcMoBLzvXvoBFByqHUNLQRL5+z4y53ptvRaSGOvAAipzR8A/ical1Yo2vWC+nlzpn5Mg>
6. Molina Healthcare of Illinois. (2020). Provider Manual. Retrieved April 2024 from <https://www.molinahealthcare.com/providers/il/medicaid/manual/home.aspx>
7. CountyCare. (202, July). Provider Manual. Retrieved April 2024 from <https://countycare.com/providers/provider-resources/>
8. CountyCare. (2024) Preferred Drug List. Retrieved April 2024 from <https://countycare.com/providers/preferred-drug-list/>

D.3. Medicaid Managed Care Program: Behavioral Health Benefits

1. Illinois Department of Healthcare and Family Services. (2018, August 16). Illinois Behavioral Health Transformation. Retrieved April 2024 from <https://www.medicaid.gov/medicaid/section-1115-demo/demonstration-and-waiver-list/81581>
2. Illinois Department of Healthcare and Family Services. (2018, October 4). State Plan Amendment (SPA) #: 18-0001. Retrieved April 2024 from <https://www.medicaid.gov/State-resource-center/Medicaid-State-Plan-Amendments/Downloads/IL/IL-18-0001.pdf>
3. Illinois Department of Healthcare and Family Services. (2020, January 17). State Plan Amendment (SPA) #: 19-0017. Retrieved April 2024 from https://www.medicaid.gov/sites/default/files/State-resource-center/Medicaid-State-Plan-Amendments/Downloads/IL/IL-19-0017_0.pdf

D.3. Medicaid Managed Care Program: SMI Population

1. Illinois Department of Healthcare and Family Services. (2023, January). Managed Care Enrollment. Retrieved April 2024 from <https://hfs.illinois.gov/info/factsfigures/detailedmanagedcareenrollment.html>
2. OPEN MINDS. (202). Serious Mental Illness Prevalence Estimates.
3. Illinois Department of Healthcare and Family Services. (2018, October 4). State Plan Amendment (SPA) #: 18-0001. Retrieved April 2024 from <https://www.medicaid.gov/State-resource-center/Medicaid-State-Plan-Amendments/Downloads/IL/IL-18-0001.pdf>

D.3. Medicaid Managed Care Program: Pharmacy Benefits

1. Illinois Department of Healthcare and Family Services. State Plan Amendment (SPA) #: 18-0016. Retrieved April 2024 from <https://www.medicaid.gov/State-resource-center/Medicaid-State-Plan-Amendments/Downloads/IL/IL-18-0016.pdf>
2. Illinois Department of Healthcare and Family Services. Pharmacy. Retrieved April 2024 from <https://hfs.illinois.gov/medicalproviders/pharmacy.html>

I.3. Sources

D.4. Medicaid Program: Care Coordination Initiatives

1. Derived from information through section D.

D.4. Medicaid Program Care Coordination Initiatives: Integrated Health Homes Concept

1. Illinois Department of Healthcare and Family Services. (2019, March 31). State Plan Amendment (SPA) #: 19-0002. Retrieved April 2024 from <https://www.medicaid.gov/State-resource-center/Medicaid-State-Plan-Amendments/Downloads/IL/IL-19-0002.pdf>
2. Illinois Department of Healthcare and Family Services. (2018, July 20). State Plan Amendment (SPA) #: 17-0014. Retrieved April 2024 from <https://www.medicaid.gov/State-resource-center/Medicaid-State-Plan-Amendments/Downloads/IL/IL-17-0014.pdf>
3. Illinois Department of Healthcare and Family Services. (2020, February 6). Integrated Health Homes. Retrieved April 2024 from <https://www2.illinois.gov/hfs/MedicalProviders/xxcc/Pages/IntegratedHealthHomes.aspx>
4. Illinois Department of Healthcare and Family Services. (2020, November 6). Medicaid Advisory Committee. Retrieved April 2024 from <https://www.illinois.gov/hfs/SiteCollectionDocuments/MedicaidAdvisoryCommitteeNovember2020FinalMinutes.pdf>

D.5. Medicaid Program Care Management and Demonstration Waivers

1. Centers for Medicare and Medicaid Services. Demonstrations and Waivers. Retrieved April 2024 from https://www.medicaid.gov/medicaid-chip-program-information/by-topics/waivers/waivers_faceted.html

D.5. Medicaid Program Section 1915 (c) HCBS Waivers

1. Centers for Medicare & Medicaid Services. Demonstrations and Waivers. Retrieved April 2024 from https://www.medicaid.gov/medicaid-chip-program-information/by-topics/waivers/waivers_faceted.html

D.6. Medicaid Program: New Initiatives- Expanding Access to Care for Kids

1. US Department of Health and Human Services. (2023, April 18) HHS Approves Illinois Proposal to Expand Access to Care for Kids in Schools. Retrieved April 2024 from <https://www.hhs.gov/about/news/2023/04/18/hhs-approves-illinois-proposal-expand-access-care-kids-schools.html>

I.3. Sources

E.1 Medicare Financing & Service Delivery System

1. OPEN MINDS. (2023, March). Health Plans Database.
2. OPEN MINDS. (2023). SMI Estimates.
3. Centers for Medicare & Medicaid Services. (2023, August) Medicare Monthly Enrollment. Retrieved April 2024 from <https://data.cms.gov/summary-statistics-on-beneficiary-enrollment/medicare-and-medicaid-reports/medicare-monthly-enrollment>

E.2. Medicare Financing & Service Delivery System

1. OPEN MINDS. (2023, March). Health Plans Database.
2. OPEN MINDS. (2023). SMI Estimates.
3. Centers for Medicare & Medicaid Services. (2023, August) Medicare Monthly Enrollment. Retrieved April 2024 from <https://data.cms.gov/summary-statistics-on-beneficiary-enrollment/medicare-and-medicaid-reports/medicare-monthly-enrollment>

E.2. Medicare System Overview

1. Healthinsurance.org (2023, December) Medicare in Illinois. Retrieved April 2024 from <https://www.healthinsurance.org/medicare/illinois>

E.3. Medicare ACOs

1. OPEN MINDS. (2022). ACO Database.

E.4. Medicare System: New Initiatives

1. Derived from information throughout this section.

F.1. Dual Eligible Medicaid Financing & Service Delivery System

1. Centers for Medicare and Medicaid Services. (2024, April). Plan Directory for MA, Cost, PACE, and Demo Organizations. Retrieved April 2024 from <https://www.cms.gov/Research-Statistics-Data-and-Systems/Statistics-Trends-and-Reports/MCRAAdvPartDENrolData/MA-Plan-Directory.html>
2. Centers for Medicare and Medicaid Services. (2024, April). Special Needs Plan (SNP) Data. Retrieved April 2024 from <https://www.cms.gov/Research-Statistics-Data-and-Systems/Statistics-Trends-and-Reports/MCRAAdvPartDENrolData/Special-Needs-Plan-SNP-Data.html>

I.3. Sources

F.2. Largest Dual Eligible Health Plans By Estimated SMI Enrollment

1. Illinois Department of Healthcare and Family Services. (2023, January). Managed Care Enrollment. Retrieved April 2024 from <https://hfs.illinois.gov/info/factsfigures/detailedmanagedcareenrollment.html>
2. Centers for Medicare and Medicaid Services. (2024, April). Plan Directory for MA, Cost, PACE, and Demo Organizations. Retrieved April 2024 from <https://www.cms.gov/Research-Statistics-Data-and-Systems/Statistics-Trends-and-Reports/MCRAdvPartDENrolData/MA-Plan-Directory.html>
3. Centers for Medicare and Medicaid Services. (2024, April). Special Needs Plan (SNP) Data. Retrieved April 2024 from <https://www.cms.gov/Research-Statistics-Data-and-Systems/Statistics-Trends-and-Reports/MCRAdvPartDENrolData/Special-Needs-Plan-SNP-Data.html>

F.3. Dual Eligible Medicaid Financing & Delivery System: Overview

1. Illinois Department of Healthcare and Family Services. (2023, June 1). Managed Care Map. Retrieved April 2024 from <https://hfs.illinois.gov/content/dam/soi/en/web/hfs/sitecollectiondocuments/mapofmanagedcare06012023.pdf?wcmmode=disabled>
2. Centers for Medicare and Medicaid Services. (2023, January). Medicare-Medicaid Enrollee State and County Enrollment Snapshots. Retrieved April 2024 from <https://www.cms.gov/Medicare-Medicaid-Coordination/Medicare-and-Medicaid-Coordination/Medicare-Medicaid-Coordination-Office/Analytics.html>

F.3. Dual Eligible Medicaid Financing & Delivery System: MLTSS Services

1. Illinois Department of Healthcare and Family Services. (2018, October 23). IL MLTSS Waiver (IL-01). Retrieved April 2024 from https://www.medicaid.gov/Medicaid-CHIP-Program-Information/By-Topics/Waivers/Downloads/IL_MLTSS_IL-01.pdf
2. Illinois Department of Healthcare and Family Services. Managed Long Term Services and Support Frequently Asked Questions. Retrieved April 2024 from <https://hfs.illinois.gov/medicalproviders/ltss/ltc/faq.html>

F.4. Dual Eligible Medicaid Financing & Delivery System: New Initiatives

1. Illinois Department of Healthcare and Family Services. (2022, August 15) Gov. Pritzker Announces Program of All-Inclusive Care for the Elderly to Expand Choices in Care for Illinois Seniors. Retrieved April 2024 from <https://www.illinois.gov/news/press-release.25315.html>
2. Illinois Department of Healthcare and Family Services. (2020, January 8). Illinois MMAI Demonstration Contract Amendment. Retrieved April 2024 from <https://hfs.illinois.gov/content/dam/soi/en/web/hfs/sitecollectiondocuments/ilcontractamendment.pdf>

I.3. Sources

F.4. Dual Eligible Medicaid Financing & Delivery System: Dual Eligible Demonstration

1. Centers for Medicare & Medicaid Services. (2018, January 1). Three-Way Contract. Retrieved April 2024 from <https://www.cms.gov/Medicare-Medicaid-Coordination/Medicare-and-Medicaid-Coordination/Medicare-Medicaid-Coordination-Office/FinancialAlignmentInitiative/Downloads/ILContract01012018.pdf>
2. Centers for Medicare & Medicaid Services. Memorandum of Understanding (MOU) Between The Centers for Medicare & Medicaid Services (CMS) And The State of Illinois Regarding a Federal-State Partnership to Test a Capitated Financial Alignment Model for Medicare-Medicaid Enrollees. Retrieved April 2024 from <https://www.cms.gov/medicaid-chip/medicare-coordination/financial-alignment>

F.4. Dual Eligible Medicaid Financing & Delivery System: MMAI Enrollment

1. Illinois Department of Healthcare and Family Services. (2023, January). Managed Care Enrollment. Retrieved April 2024 from <https://hfs.illinois.gov/info/factsfigures/detailedmanagedcareenrollment.html>

G.1. LTSS Financing & Service Delivery

1. Illinois Department of Healthcare and Family Services. (2023, January). Managed Care Enrollment. Retrieved April 2024 from <https://hfs.illinois.gov/info/factsfigures/detailedmanagedcareenrollment.html>
2. Illinois Department of Healthcare and Family Services. (2021, January 1). Managed Care Contracts. Retrieved April 2024 from <https://hfs.illinois.gov/medicalproviders/cc/managedcarecontracts.html>
3. Illinois Department of Healthcare and Family Services. (2018, October 23). IL MLTSS Waiver (IL-01). Retrieved April 2024 from https://www.medicaid.gov/Medicaid-CHIP-Program-Information/By-Topics/Waivers/Downloads/IL_MLTSS_IL-01.pdf
4. Illinois Department of Healthcare and Family Services. Managed Long Term Services and Support Frequently Asked Questions. Retrieved April 2024 from <https://hfs.illinois.gov/medicalproviders/ltss/lts/faq.html>

I.3. Sources

G.1. LTSS Service Delivery System Enrollment By Eligibility Group

1. Illinois Department of Healthcare and Family Services. (2018, October 4). State Plan Amendment (SPA) #: 18-0001. Retrieved April 2024 from <https://www.medicaid.gov/State-resource-center/Medicaid-State-Plan-Amendments/Downloads/IL/IL-18-0001.pdf>
2. Illinois Department of Healthcare and Family Services. (2023, December). Medicaid Advisory Committee December 2023. Retrieved April 2024 from <https://hfs.illinois.gov/about/boardsandcommissions/mac/2023macmeetingnotices.html>
3. Kaiser Health News. (2020, April 21). A Switch To Medicaid Managed Care Worries Some Illinois Foster Families. Retrieved April 2024 from <https://khn.org/news/a-switch-to-medicaid-managed-care-worries-some-illinois-foster-families/>

G.2. LTSS Financing & Service Delivery System: Overview

1. Illinois Department of Healthcare and Family Services. (2018, October 23). IL MLTSS Waiver (IL-01). Retrieved April 2024 from https://www.medicaid.gov/Medicaid-CHIP-Program-Information/By-Topics/Waivers/Downloads/IL_MLTSS_IL-01.pdf
2. Illinois Department of Healthcare and Family Services. Managed Long Term Services and Support Frequently Asked Questions. Retrieved April 2024 from <https://hfs.illinois.gov/medicalproviders/ltss/ltc/faq.html>

G.3. LTSS Health Plan Characteristics

1. Aetna Better Health. Provider Manual. Retrieved April 2024 from <https://www.aetnabetterhealth.com/content/dam/aetna/medicaid/illinois/providers/pdf/Aetna%20Better%20Health%20of%20Illinois%20Provider%20Manual.pdf>
2. Blue Cross Blue Shield of Illinois. Provider Manual. Retrieved April 2024 from <https://www.bcbsil.com/provider/standards/standard-requirements/manual>
3. Illinois Department of Healthcare and Family Services. Managed Care Manual. Retrieved April 2024 <https://hfs.illinois.gov/medicalproviders/handbooks.html>
4. Meridian Health (2020, March). Provider Manual. Retrieved April 2024 from <https://mmp.ilmeridian.com/provider/provider-tools-resources/provider-manual.html>
5. Molina Healthcare of Illinois. Provider Manual. Retrieved April 2024 from <https://www.molinahealthcare.com/providers/il/medicaid/manual/home.aspx>
6. CountyCare. (2021, July). Provider Manual. Retrieved April 2024 from <https://countycare.com/providers/provider-resources/>

I.3. Sources

G.4. LTSS Program: Health Benefits

1. Illinois Department of Healthcare and Family Services. State of Illinois Model Contract. Retrieved April 2024 from <https://www.illinois.gov/hfs/SiteCollectionDocuments/2018MODELCONTRACTadministrationcopy.pdf>
2. Illinois Department of Healthcare and Family Services. (2018, October 23). IL MLTSS Waiver (IL-01). Retrieved April 2024 from https://www.medicaid.gov/Medicaid-CHIP-Program-Information/By-Topics/Waivers/Downloads/IL_MLTSS_IL-01.pdf
3. Illinois Department of Healthcare and Family Services. Managed Long Term Services and Support Frequently Asked Questions. Retrieved April 2024 from <https://hfs.illinois.gov/medicalproviders/ltss/ltc/faq.html>

G.4. LTSS Program: New Initiatives

1. Illinois Department of Human Services, (2024). DD System Transformation. Retrieved April 2024 from <https://www.dhs.state.il.us/page.aspx?item=150342>

H.1. Public Behavioral Health System Governance: Organization Chart

1. Illinois Department of Human Services. Organization. Retrieved April 2024 from <http://www.dhs.state.il.us/page.aspx?item=31251>

H.1. Public Behavioral Health System Governance: Key Leadership

1. Illinois Department of Human Services. Organization. Retrieved April 2024 from <http://www.dhs.state.il.us/page.aspx?item=31251>

H.2. Public Behavioral Health System Budget

1. Illinois Department of Human Services FY 2024 Budget Briefing. Retrieved April 2024 from <https://www.dhs.state.il.us/OneNetLibrary/27897/documents/Budget/FY24-IDHS-Budget-Briefing-Presentation.pdf>

H.2. Public Behavioral Health System Budget

1. Illinois Department of Human Services FY 2024 Budget Briefing. Retrieved April 2024 from <https://www.dhs.state.il.us/OneNetLibrary/27897/documents/Budget/FY24-IDHS-Budget-Briefing-Presentation.pdf>
2. Illinois Department of Human Services. FY 2022 Budget Briefing. Retrieved April 2024 from <https://www.dhs.state.il.us/page.aspx?item=29766>
3. Illinois Department of Human Services. FY 2020 Budget Briefing. Retrieved April 2024 from <http://www.dhs.state.il.us/page.aspx?item=116270>
4. Illinois Department of Human Services. FY 2021 Budget Briefing. Retrieved April 2024 from <http://www.dhs.state.il.us/page.aspx?item=116270>
5. Illinois Department of Human Services. FY 2023 Budget Briefing. Retrieved April 2024 from <https://www.dhs.state.il.us/page.aspx?item=140951>

I.3. Sources

H.3. State Psychiatric Institutions

1. Illinois Department of Human Services Office of Inspector General. DHS OIG FY 2023 Annual Report. Retrieved April 2024 from <https://www.dhs.state.il.us/page.aspx?item=157062#:~:text=During%20FY23%2C%20OIG%20completed%20%2C539,against%20facilities%20and%20community%20agencies>

H.3 State Psychiatric Institution Catchment Areas

1. Illinois Department of Human Services. Illinois State Operated Hospital Catchment Area Map. Retrieved April 2024 from <https://www.dhs.state.il.us/page.aspx?item=61890>

H.4. State Behavioral Health Safety-Net Delivery System

1. Illinois Department of Human Services. Mental Health. Retrieved April 2024 from <http://www.dhs.state.il.us/page.aspx?item=29735>
2. Illinois Department of Human Services. Addiction. Retrieved April 2024 from <http://www.dhs.state.il.us/page.aspx?item=29725>
3. Illinois Mental Health Collaborative for Access and Choice. Illinois Mental Health Collaborative for Access and Choice. Retrieved April 2024 from <http://www.illinoismentalhealthcollaborative.com/>

H.5. Behavioral Health System: New Initiatives

1. WGN9. (2024, January 29). Gov Pritzker announces states partnership with Google to help families access mental healthcare for children. Retrieved April 2024 from <https://wgntv.com/news/illinois/gov-pritzker-announces-states-partnership-with-google-to-help-families-access-mental-healthcare-for-children/>
2. Illinois Senate GOP. (2024, February) Statewide Initiative with Google Improves Access to Children’s Behavioral Health Resources. Retrieved April 2024 from <https://ilsenategop.org/2024/02/09/statewide-initiative-with-google-improves-access-to-childrens-behavioral-health-resources/>
3. State of Illinois. (2022, March) Governor Pritzker Launches Initiative to Improve Behavioral Health Services for Children. Retrieved April 2024 from <https://www.illinois.gov/news/press-release.24652.html>