



# New Jersey Health & Human Services Market Profile



# Health & Human Services Market Profile Overview

## A. [Executive Summary](#)

1. Health Care Coverage by Payer
2. Medicaid Care Coordination Initiatives
3. Behavioral Health Safety-Net System Overview

## B. [Health Financing System Overview](#)

1. Population Demographics
2. Population Centers
3. Population Distribution By Payer
4. Largest Health Plans
5. Health Insurance Marketplace
6. Accountable Care Organizations (ACOs)

## C. [Medicaid Administration, Governance & Operations](#)

1. Medicaid Governance
2. Medicaid Program Spending
3. Medicaid Expansion Status
4. Medicaid Program Benefits

## D. [Medicaid Financing & Service Delivery System](#)

1. Medicaid Financing & Service Delivery System
2. Medicaid FFS Program
3. Medicaid Managed Care Program
4. Medicaid Program: Care Coordination Initiatives
5. Medicaid Program Waivers
6. Medicaid Program: New Initiatives

## E. [Dual Eligible Financing & Service Delivery System](#)

1. Dual Eligible Medicaid Financing & Service Delivery System
2. Largest Dual Eligible Health Plans By Estimated SMI Enrollment
3. Dual Eligible Medicaid Financing & Delivery System: Overview
4. Dual Eligible Medicaid Financing & Delivery System: New Initiatives

## F. [Long-Term Services & Supports Financing & Service Delivery System](#)

1. LTSS Financing & Service Delivery System
2. LTSS Medicaid Financing & Delivery System: Overview
3. Medicaid LTSS Program: Health Plan Characteristics
4. Medicaid LTSS Program: Health Benefits
5. LTSS Medicaid Financing & Delivery System: New Initiatives

## G. [State Behavioral Health Administration & Finance System](#)

1. Public Behavioral Health System Governance
2. Public Behavioral Health System Spending
3. Behavioral Health Hospital Capacity
4. Behavioral Health Safety-Net Delivery System

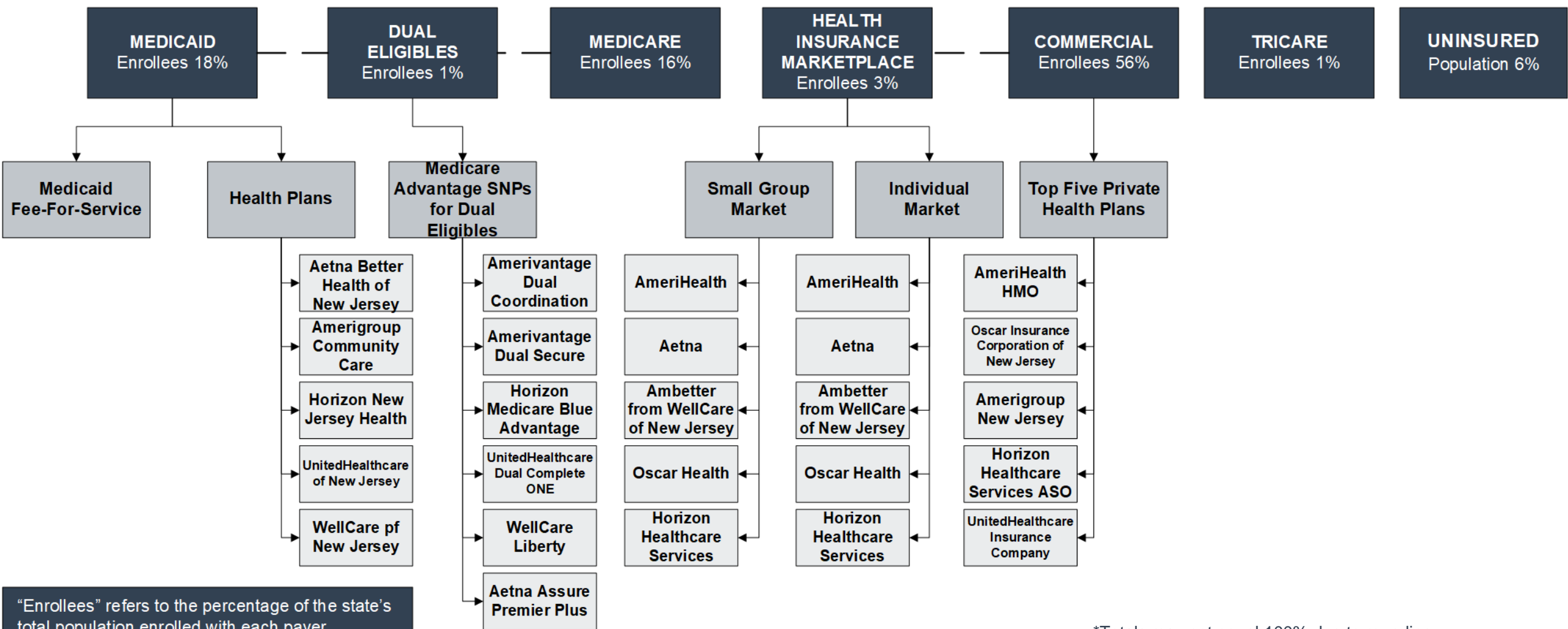
## H. [Appendices](#)

1. *OPEN MINDS* Estimates For The Share Of SMI Consumers By Payer/Plan
2. Glossary Of Terms
3. Sources

## A. Executive Summary

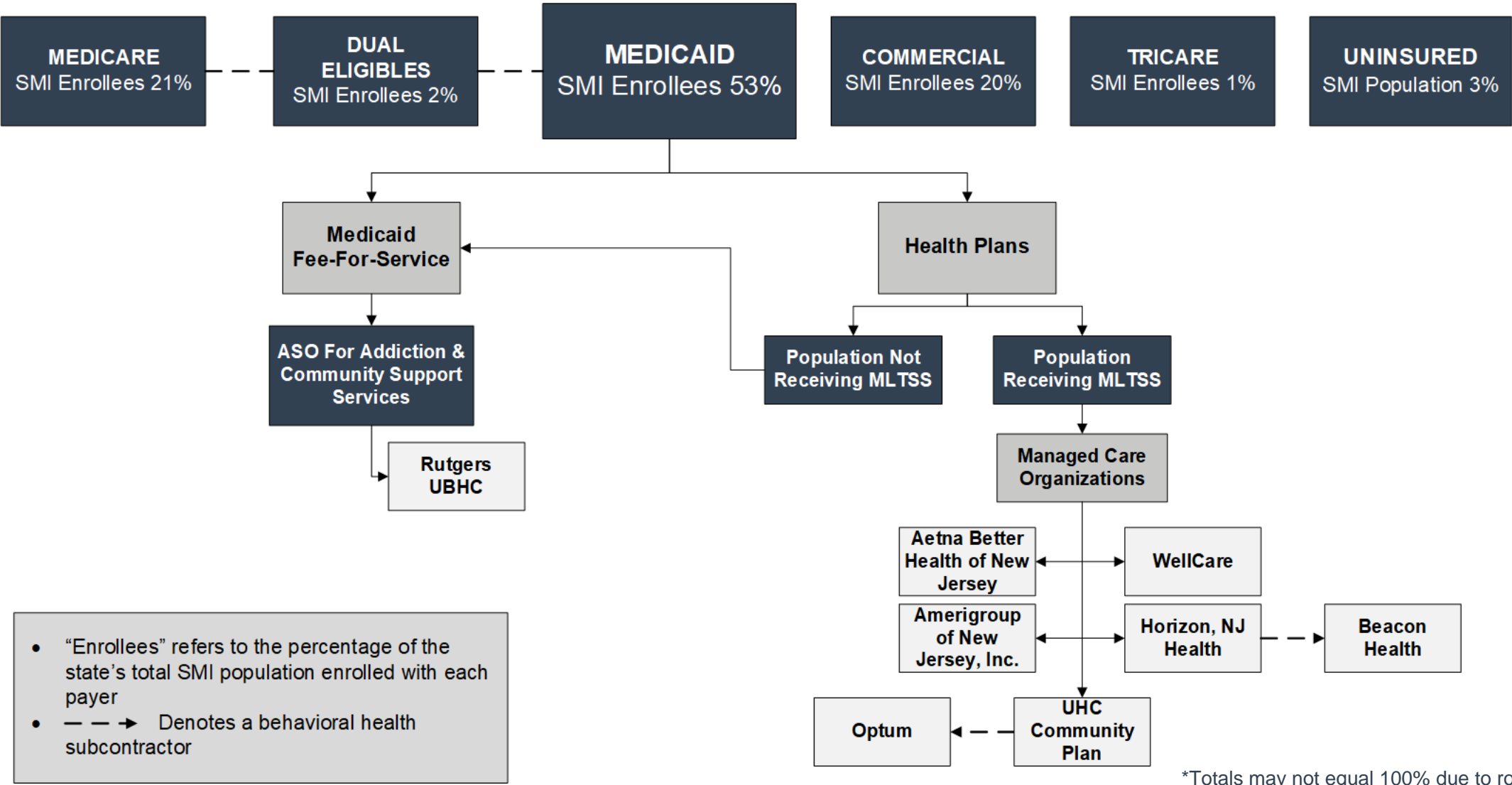
# A.1. New Jersey Physical Health Care Coverage By Payer

Total New Jersey Population- 9,267,130  
Estimated SMI Population- 454,089



\*Totals may not equal 100% due to rounding

# A.1. New Jersey Behavioral Health Care Coverage By Payer



\*Totals may not equal 100% due to rounding

## A.2. Health & Human Services Care Coordination Initiatives

Medicaid Care Coordination Entities For Chronic Care Populations (Including SMI)		
Care Coordination Entity	Active Program	Description
Managed Care Health Plan	✓	Health plans are responsible for care coordination.
Primary Care Case Management (PCCM)		None
Accountable Care Organization (ACO) Program	✓	The ACO's have been renamed Regional Health Hubs.
Affordable Care Act (ACA) Model Health Home	✓	The state has health homes for individuals with SMI and children with serious emotional disturbance (SED).
Patient-Centered Medical Home (PCMH)		None
Dual Eligible Demonstration		None
Managed Long-Term Services and Supports (MLTSS)	✓	The state provides LTSS through the Medicaid health plans for all populations except those with behavioral health and/ or substance use disorders
Certified Community Behavioral Health Clinics (CCBHC) Grant	✓	The state was awarded an original CCBHC demonstration grant in July 2017 and currently operates through federal funding.
Other Grants & Initiatives		None

## A.3. Health Care Safety-Net Delivery System

### State Agencies Responsible For Uninsured Citizens & Delivery System Model

#### Physical Health Services

- The New Jersey Department of Health, Office of Primary Care and Rural Health, provides funding for physical health services for the uninsured population.

#### Mental Health Services

- The Department of Human Services, Division of Mental Health and Addiction Services, delivers mental health services to the uninsured population through a network of provider organizations.

#### Addiction Treatment Services

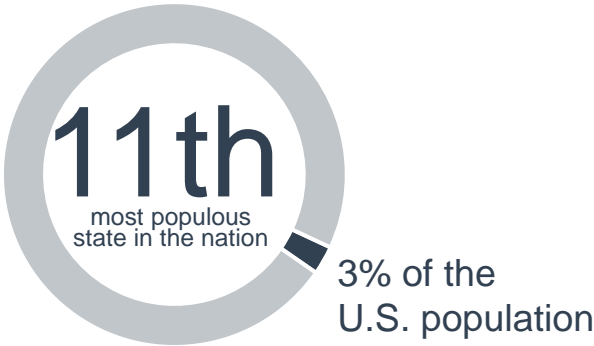
- New Jersey's administrative services organization (ASO), Rutgers University Behavioral Health Care, is responsible for managing addiction treatment services for the uninsured population. Funding and contract oversight is provided by the Department of Human Services, Division of Mental Health and Addiction Services.

## B. New Jersey Health Financing System Overview

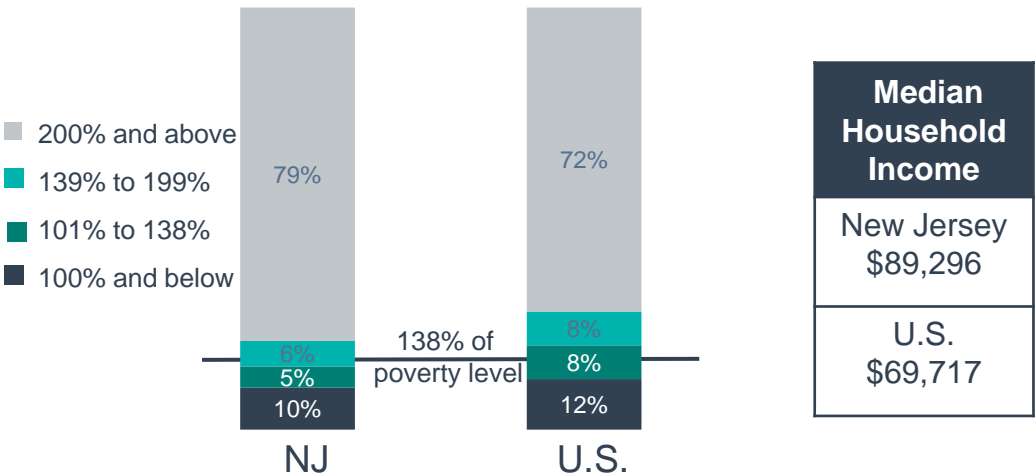


# B.1. Population Demographics

Total New Jersey Population- 9,267,130  
Estimated SMI Population- 454,089



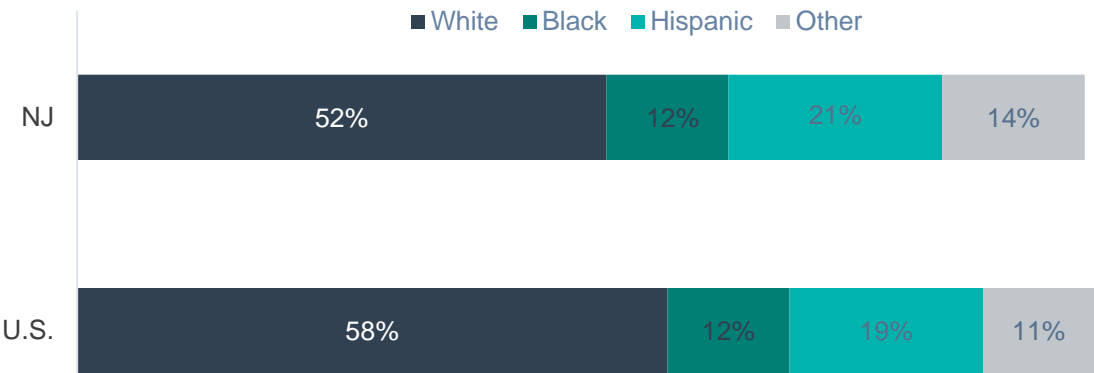
Population Distribution By Income To Poverty Threshold Ratio



Population Distribution By Age



New Jersey & U.S. Racial Composition



\*Totals may not equal 100% due to rounding

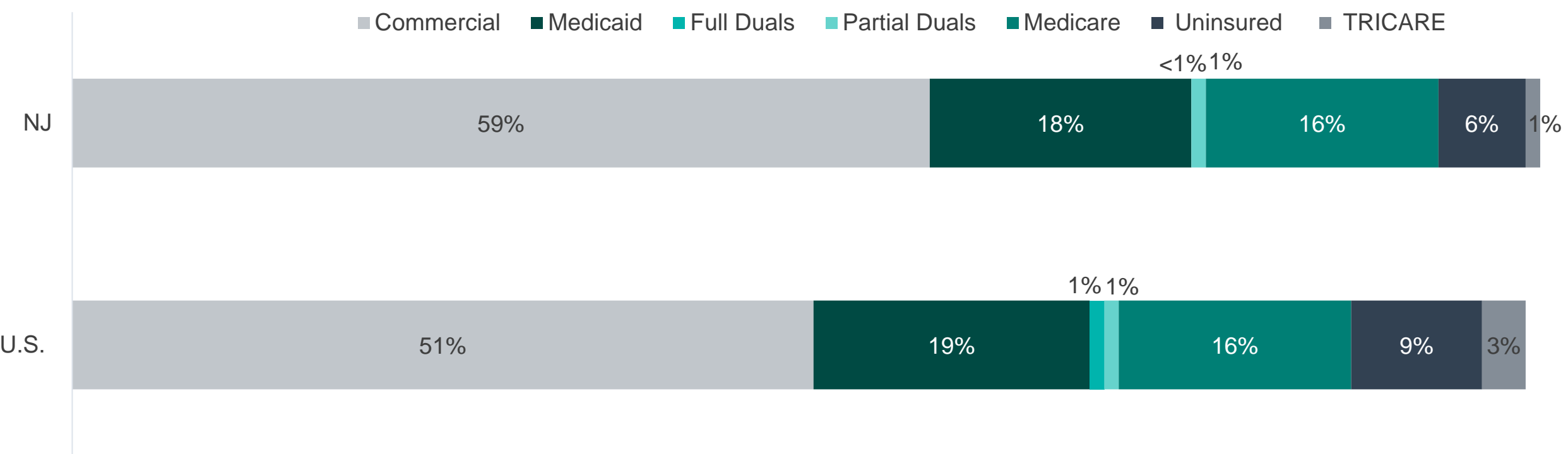
# B.2. Population Centers

Population Centers by Metropolitan Statistical Areas (MSAs)		
MSA	New Jersey Residents	Percent Of State Population
Total MSA Population	6,663,928	75%
Allentown-Bethlehem-Easton, NJ-PA Metro Division	2,384,685	27%
New York-Newark-Jersey City, NJ-PA Metro Division	2,167,853	24%
Philadelphia-Camden-Wilmington, NJ-PA Metro Division	1,246,650	14%
Trenton, NJ Metro Area	367,239	4%
Atlantic City-Hammonton, NJ Metro Area	262,945	3%
Vineland-Bridgeton, NJ Metro Area	147,008	2%
Ocean City, NJ Metro Area	91,546	1%

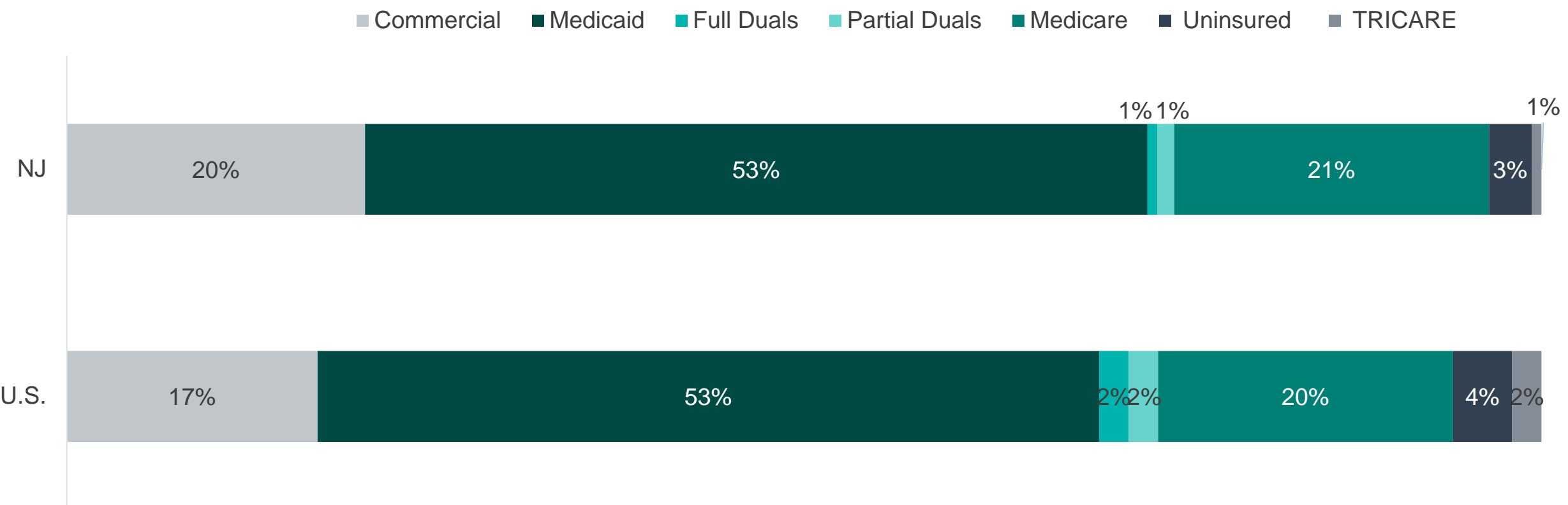
\*Based on 2020 census



# B.3. Population Distribution By Payer: National vs. State



# B.3. SMI Population Distribution By Payer: National vs. State



## B.4. Largest New Jersey Health Plans By Enrollment

Plan Name	Plan Type	Enrollment*
Horizon Healthcare Services	Commercial administrative services organization (ASO)	2,723,095
Horizon New Jersey Health	Medicaid managed care	1,134,616
New Jersey Medicare Fee-For-Service (FFS)	Medicare	1,004,592
Aetna	Commercial ASO	901,449
UnitedHealthcare	Commercial ASO	604,230
UnitedHealthcare of New Jersey	Medicaid managed care	402,457
Cigna	Commercial ASO	381,229
Amerigroup Community Care	Medicaid managed care	256,968
Aetna	Medicare Advantage	181,964
QualCare	Commercial ASO	180,000

\*Medicaid enrollment as of May 2022; TRICARE as of December 2022; Commercial as of May 2022; Medicare enrollment as of May 2022

## B.4. Largest New Jersey Health Plans By Estimated SMI Enrollment

Plan Name	Plan Type	Enrollment*	Estimated SMI Enrollment
Horizon New Jersey Health	Medicaid managed care	1,134,616	397,116
UnitedHealthcare of New Jersey	Medicaid managed care	402,457	140,860
Horizon Healthcare Services	Commercial administrative services organization (ASO)	2,723,095	111,647
Amerigroup Community Care	Medicaid managed care	256,968	89,939
Aetna Better Health of New Jersey	Medicaid managed care	126,103	44,136
WellCare of New Jersey	Medicaid managed care	107,405	37,592
Aetna	Commercial ASO	901,449	36,959
UnitedHealthcare	Commercial ASO	604,230	24,773
New Jersey Medicaid Fee-for-service (FFS)	Medicaid	62,902	22,016
New Jersey Medicare FFS	Medicare	1,004,592	16,073

\*Medicaid enrollment as of May 2022; TRICARE as of December 2022; Commercial as of May 2022; Medicare enrollment as of May 2022

# B.5. Health Insurance Marketplace

Health Insurance Marketplace	
Health Insurance Marketplace Enrollment Percentage	3%
Type of Marketplace	State
Individual Enrollment Contact	<a href="https://nj.gov/getcoverednj/">https://nj.gov/getcoverednj/</a>
	<a href="tel:1-833-677-1010">1-833-677-1010</a>
Small Business Enrollment Contact	<a href="https://www.healthcare.gov/small-businesses/">https://www.healthcare.gov/small-businesses/</a>
	1-800-706-7893

2023 Individual Market Health Plans	
1.	AmeriHealth
2.	Horizon Healthcare Services (BCBS)
3.	Oscar Health
4.	Ambetter from WellCare of New Jersey
5.	Aetna
6.	Oxford Health Insurance (NJ) Inc.

2023 Small Group Market Health Plans	
1.	AmeriHealth
2.	Horizon Healthcare Services (BCBS)
3.	Oscar Health
4.	Ambetter from WellCare of New Jersey
5.	Aetna

## B.6. Accountable Care Organizations

### Medicare Shared Savings ACOs

- |   |  |
|---|--|
| 1. Accountable Care Organization of Pennsylvania, LLC (Delaware Valley ACO) | 19. Holy Name Medical Center ACO, LLC              |
| 2. ACO Health Partners, LLC   | 20. Inspira Care Connect, LLC                      |
| 3. Aledade Accountable Care 22, LLC   | 21. JFK Population Health Company, LLC             |
| 4. Aledade Accountable Care 25, LLC   | 22. LHS Health Network, LLC                        |
| 5. AllCare Health Alliance, LLC   | 23. LTC ACO, LLC (Formerly Genesis Healthcare ACO) |
| 6. Atlantic Accountable Care Organization (AHS ACO)                         | 24. Meridian Accountable Care Organization, LLC    |
| 7. AtlantiCare Health Solutions, Inc  | 25. NewYork Quality Care                           |
| 8. Barnabas Health ACO-North, LLC   | 26. North Jersey Health Alliance, LLC              |
| 9. Capital Health Accountable Care Organization, LLC                        | 27. NJPACO R, LLC                                  |
| 10. Caravan Health ACO 22, LLC  | 28. Optimus Healthcare Partners, LLC               |
| 11. Care Better ACO, LLC  | 29. Orange Accountable Care Organization, LLC      |
| 12. Central Florida ACO   | 30. Princeton HealthCare Partners, LLC             |
| 13. ColigoCare, LLC   | 31. Richmond Quality, LLC                          |
| 14. DVACO-3, LLC  | 32. Shore Quality Partners ACO, LLC                |
| 15. Hackensack Physician-Hospital Alliance ACO, LLC                         | 33. SOMOS Accountable Care Organization LLC        |
| 16. Healthcare Quality Partners, LLC  | 34. St Luke's Shared Savings Plan, LLC             |
| 17. Healthier Communities ACO, LLC  | 35. The Physicians Alliance LLC                    |

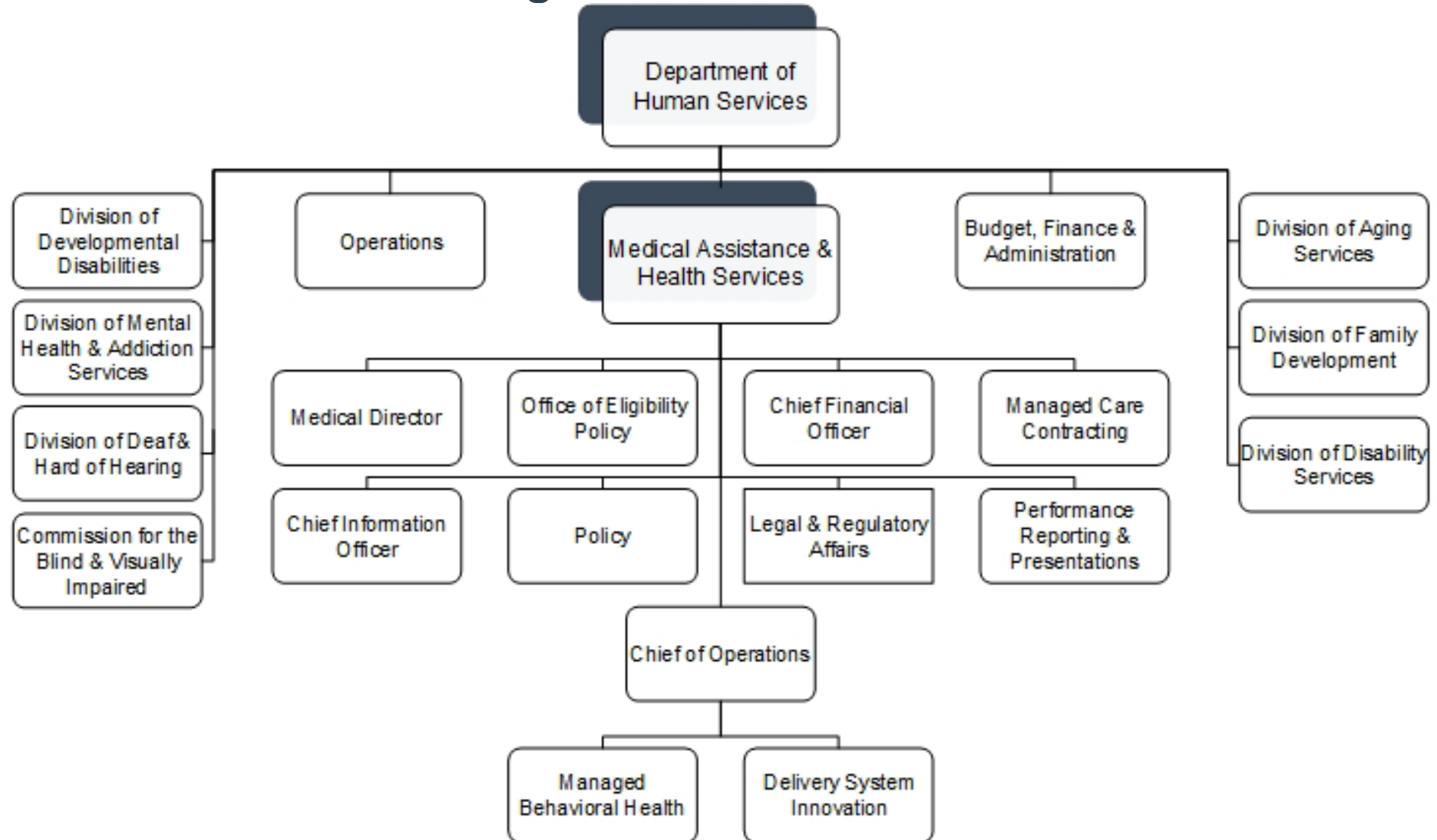


## B.6. Accountable Care Organizations (cont.)

Commercial ACOs	
ACO	Commercial Insurer
Accountable Care Organization of Pennsylvania, LLC	Blue Cross, Humana
Atlantic Accountable Care Organization	Aetna, UnitedHealthcare
AtlantiCare Health Solutions, Inc	Horizon BCBSNJ
Barnabas Health ACO-North, LLC	Horizon BCBSNJ
Hackensack Physician-Hospital Alliance ACO, LLC	Horizon BCBSNJ, Aetna
Hunterdon HealthCare Partners	Aetna, Cigna, Horizon BCBSNJ
LHS Health Network	Aetna
NexusACO	UnitedHealthcare
Optimus Healthcare Partners, LLC	Aetna
Skylands Medical Group CAC	Cigna
Summit Health	Cigna

## C. Medicaid Administration, Governance & Operations

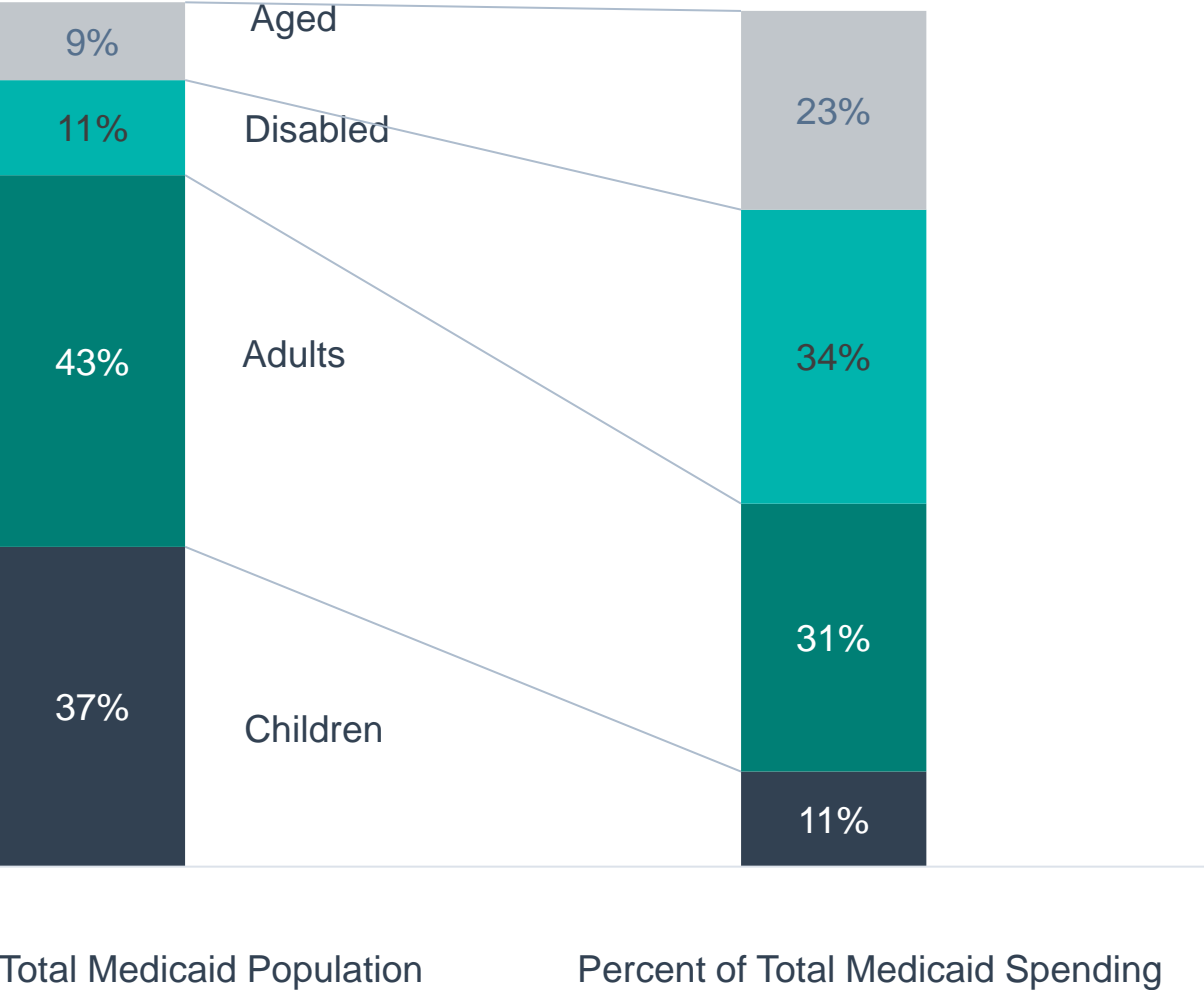
## C.1. Medicaid Governance: Organization Chart



# C.1. Medicaid Governance: Key Leadership

Name	Position	Department	Email
Sarah Adelman	Acting Commissioner	Department of Human Services (DHS)	sarah.adelman@dhs.state.nj.us
Lisa Asare	Deputy Commissioner of Health Services	Department of Human Services (DHS)	lisa.asare@dhs.state.nj.us
Jon Chebra	Chief of Staff	Department of Human Services (DHS)	jonathan.chebra@dhs.nj.gov
Jennifer Langer Jacobs	Assistant Director/Medicaid Director	DHS, Division of Medical Assistance and Health Services	jennifer.jacobs@dhs.state.nj.us
Carol Grant	Deputy Director	DHS, Division of Medical Assistance and Health Services	carol.grant@dhs.state.nj.us

# C.2. Medicaid Program Spending By Eligibility Group



Medicaid Spending Per Enrollee, FY 2020		
	U.S.	NJ
All populations	\$8,718	\$10,158
Children	\$3,495	\$3,172
Adults	\$5,461	\$8,362
Expansion adults	\$7,227	\$7,039
Blind and disabled	\$23,123	\$32,196
Aged	\$18,552	\$24,974

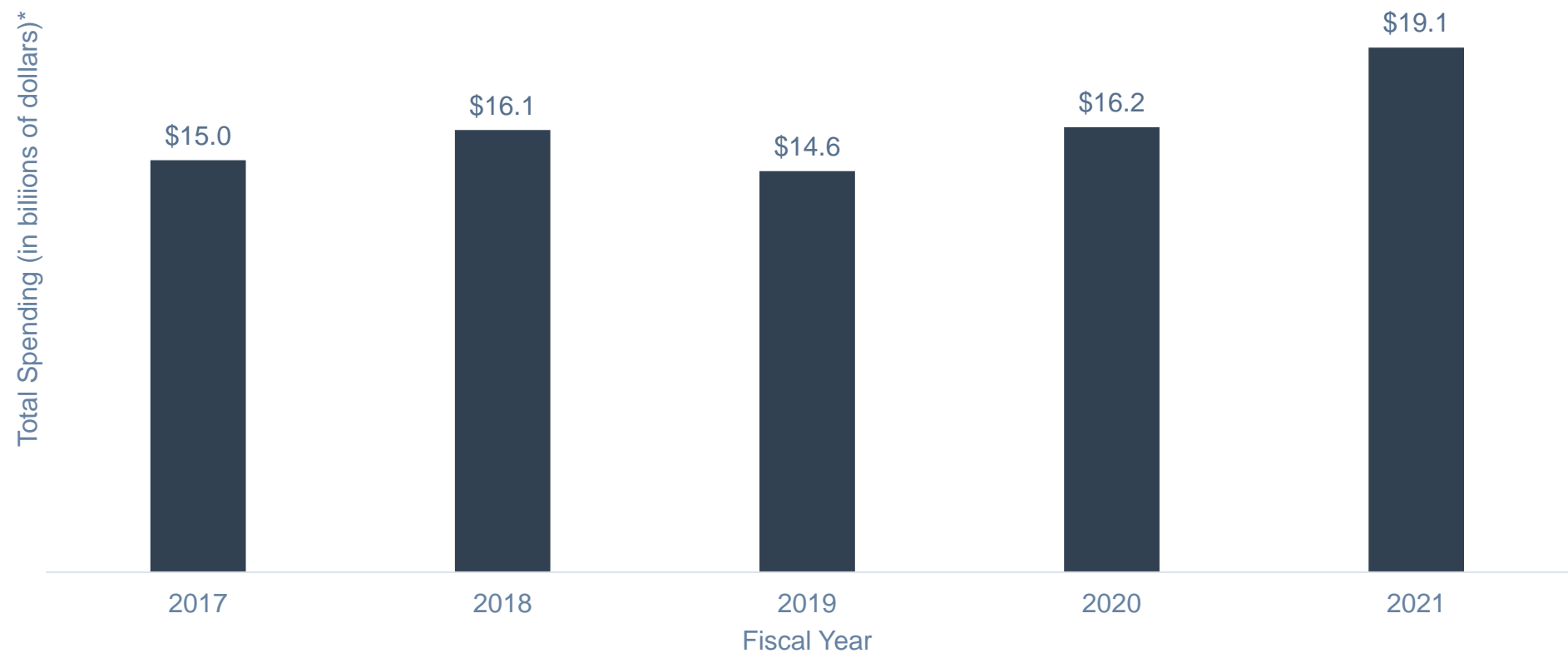
\*Based on FY 2020 data

# C.2. Medicaid Program Spending: Budget

Budget Item	SFY 2021 Spending	Percent Of Budget
Managed care and premium assistance	\$11,943,000,000	62%
Home- and community-based LTSS	\$2,237,000,000	12%
Hospital	\$1,639,000,000	9%
Institutional LTSS	\$1,258,000,000	7%
Other acute services	\$1,019,000,000	5%
Clinic and health center	\$485,000,000	3%
Medicare premiums and coinsurance	\$477,000,000	2%
Physician	\$58,000,000	<1%
Other practitioner	\$14,000,000	<1%
Drugs	\$7,000,000	<1%
Dental	\$1,000,000	<1%
Budget Total: \$19,138,000,000		

Federal & County Financial Participation	
FY 2023 Federal Medical Assistance Percentage (FMAP)	56%
CY 2023 Newly Eligible FMAP (expansion population)	88%
Counties contribute to state Medicaid share	No

# C.2. Medicaid Program Spending: Change Over Time



# C.3. Medicaid Expansion Status

Medicaid Expansion	
Participating In Expansion	Yes
Date Of Expansion	January 2014
Medicaid Eligibility Income Limit For Able-Bodied Adults	133% of the Federal Poverty Level (FPL) Note: The Patient Protection and Affordable Care Act of 2010 (PPACA) requires that 5% of income be disregarded in eligibility determination.
Legislation Used To Expand Medicaid	FY 2014 Appropriations Act
Number Of Individuals Enrolled In The Expansion Group (March 2022)	687,568
Number Of Enrollees Newly Eligible Due To Expansion	687,568
Benefits Plan For Expansion Population	The state’s benefit plan for the expansion population is called FamilyCare ABP. The ABP provides all Medicaid state plan benefits.



## C.4. Medicaid Program Benefits

### Federally Mandated Services

1. Inpatient hospital services other than services in an institution for mental disease (IMD)
2. Outpatient hospital services
3. Rural Health Clinic services
4. Federally Qualified Health Center (FQHC) services
5. Laboratory and x-ray services
6. Nursing facilities for individuals 21 and over
7. Early and Periodic Screening and Diagnosis and Treatment (EPSDT)
8. Family planning services and supplies
9. Free standing birth centers
10. Pregnancy-related and postpartum services
11. Nurse midwife services
12. Tobacco cessation programs for pregnant women
13. Physician services
14. Medical and surgical services of a dentist
15. Home health services
16. Nurse practitioner services
17. Non-emergency transportation to medical care

### New Jersey's Optional Services

1. Podiatry services
2. Optometry services
3. Chiropractic services
4. Other practitioner services
5. Clinic services
6. Dental services
7. Physical and occupational therapy
8. Services for individuals with speech, hearing, and language disorders
9. Prescribed drugs
10. Eyeglasses, prosthetics, and dentures
11. Diagnostic, screening, rehabilitative, and preventive services
12. Services for individuals aged 65 and older in IMDs
13. Intermediate care facility services
14. Inpatient psychiatric care for individuals under age 22
15. Nursing facility services for individuals under age 21
16. Case management
17. Care and services provided in religious nonmedical health care institutions
18. Personal care services
19. Hospice care

## D. Medicaid Financing & Service Delivery System

# D.1. Medicaid Financing & Service Delivery System

Medicaid System Characteristics		
Characteristics	Medicaid Fee-For-Service (FFS)	Medicaid Managed Care
Enrollment (November 2022)	62,902	2,206,895
SMI Enrollment	<ul style="list-style-type: none"><li>New Jersey does not specifically preclude individuals with SMI from enrolling in managed care; therefore, the majority of the SMI population is enrolled in managed care.</li><li><i>OPEN MINDS</i> estimates 97% of the population in managed care, 3% in FFS</li></ul>	
Management	<ul style="list-style-type: none"><li>Physical health: Department of Human Services</li><li>Behavioral health: Department of Human Services and administrative services organization (ASO)</li></ul>	<ul style="list-style-type: none"><li>Physical health: Five health plans</li><li>Behavioral health: Department of Human Services and ASO</li></ul>
Payment Model	<ul style="list-style-type: none"><li>Physical health: FFS</li><li>Behavioral health: FFS and administrative rate</li></ul>	<ul style="list-style-type: none"><li>Physical health: Capitated rate</li><li>Behavioral health: FFS and administrative rate</li></ul>
Geographic Service Area	Statewide	Statewide

Total Medicaid: 2,269,797 | Total Medicaid With SMI: 731,658

# D.1. Medicaid System Overview

Medicaid Financial Delivery System Enrollment	
Total Medicaid population distribution	As of November 2022: 3% in fee-for-service (FFS), 97% in managed care
SMI population inclusion in managed care	<ul style="list-style-type: none"><li>• New Jersey does not specifically preclude individuals with SMI from enrolling in managed care; therefore, the majority of the SMI population is enrolled in managed care.</li><li>• Estimated 3% of population in FFS, 97% in managed care</li></ul>
Dual eligible population inclusion in managed care	<ul style="list-style-type: none"><li>• Managed care is mandatory for full benefit dual eligibles and FFS is mandatory for partial benefit dual eligibles.</li><li>• Estimated that approximately 100% in managed care</li></ul>
LTSS population inclusion in managed care	<ul style="list-style-type: none"><li>• Managed care is mandatory for all LTSS beneficiaries.</li><li>• Estimated 100% in managed care</li></ul>

Medicaid Financing & Risk Arrangements: Behavioral Health		
Service Type	FFS Population	Managed Care Population
Traditional behavioral health	Covered FFS by the state	<ul style="list-style-type: none"><li>• Non-Managed Long-Term Services and Supports (MLTSS) population: Excluded from the health plan's capitation rate, and covered FFS by the state</li><li>• MLTSS population: Included in the health plan's capitation rate</li></ul>
Specialty behavioral health	Covered FFS by the state, addiction treatment services are managed by an administrative services organization (ASO)	<ul style="list-style-type: none"><li>• Non-MLTSS population: Excluded from the health plan's capitation rate and covered FFS. Addiction treatment services are managed by an ASO.</li><li>• MLTSS population: All addiction treatment benefits are included in the health plan's capitation rate. Some mental health services are excluded from the health plan's capitation rate.</li></ul>
Pharmaceuticals	N/A	All populations: Included in the health plan's capitation rate
Long-term services and supports (LTSS)	N/A	All populations: Included in the health plan's capitation rate except for services for the developmentally disabled

## D.1. Medicaid Care Coordination Initiatives

Medicaid Care Coordination Entities For Chronic Care Populations (Including SMI)		
Care Coordination Entity	Active Program	Description
Managed Care Health Plan	✓	Health plans are responsible for care coordination.
Primary Care Case Management (PCCM)		None
Accountable Care Organization (ACO) Program	✓	The ACO's have been renamed Regional Health Hubs.
Affordable Care Act (ACA) Model Health Home	✓	The state has health homes for individuals with SMI and children with serious emotional disturbance (SED).
Patient-Centered Medical Home (PCMH)		None
Dual Eligible Demonstration		None
Managed Long-Term Services and Supports (MLTSS)	✓	The state provides LTSS through the Medicaid health plans for all populations except those with behavioral health and/ or substance use disorder.
Certified Community Behavioral Health Clinics (CCBHC) Grant	✓	The state was awarded an original CCBHC demonstration grant and currently operates through federal funding.

# D.1. Medicaid Service Delivery System Enrollment By Eligibility Group

Population	Mandatory FFS Enrollment	Option To Enroll In FFS Or Managed Care	Mandatory Managed Care Enrollment
Parents and caretakers			X
Children			X
Blind and disabled individuals			X
Aged individuals			X
Dual eligibles	X (partial benefit)		X (full benefit)
Medicaid expansion			X
Individuals residing in nursing homes	X		
Individuals residing in ICF/IDD	X		X
Individuals in foster care			X
Other populations	<ul style="list-style-type: none"><li>Individuals institutionalized in an inpatient psychiatric institution</li><li>Individuals who are medically needy</li><li>Infants of inmates living in the prison nursery</li></ul>	Indians who are members of federally recognized Tribes	Breast and cervical cancer participants

## D.2. Medicaid FFS Program: Overview

- FFS enrollment as of November 2022 was 62,902

# D.2. Medicaid FFS Program: Behavioral Health Benefits

- Rutgers University Behavioral Health Care (UBHC) is the administrative services organization (ASO) for addiction treatment services and is called the interim management entity (IME).
- UBHC provides utilization management, serves as the single point of entry for addiction treatment services, and processes prior authorizations for mental health community support services.

FFS Mental Health Benefits	
1.	Inpatient services
2.	Partial care
3.	Medication management
4.	Testing and assessment
5.	Crisis assessment
6.	Programs of assertive community treatment
7.	Individual, group, and family counseling
8.	Rehabilitative services
9.	Service plan
10.	Psychiatric emergency rehabilitation services
11.	Community support services
12.	Integrated/targeted case management
13.	Applied Behavioral Analysis services for individuals under the age of 21.
14.	Peer Support Services
15.	Applied Behavioral Analysis
16.	Outpatient services
17.	Community Residences for Adults with Mental Illness

FFS Addiction Treatment Benefits	
1.	Inpatient services
2.	Outpatient services
3.	Intensive outpatient services
4.	Partial care
5.	Residential detoxification
6.	Short-term residential treatment (including services in an IMD)
7.	Ambulatory withdrawal management
8.	Medication assisted treatment (MAT)
9.	Peer Support Services
10.	Office-based addiction treatment services [Three tiers: primary care services, FQHC and clinic-based Opioid Treatment Providers (OTPs)]



## D.2. Medicaid FFS Program: SMI Population

- New Jersey does not specifically preclude individuals with SMI from enrolling in managed care based on a diagnosis of SMI; however, individuals with SMI may be enrolled in FFS based on other criteria.
- As of November 2022, *OPEN MINDS* estimates that 3% of the SMI population is enrolled in FFS.

# D.2. Medicaid FFS Program: Pharmacy Benefit

New Jersey FFS Program Pharmacy Benefit & Utilization Restrictions	
State Uses Pharmacy Benefit Manager	No
Responsible For Financing General Pharmacy Benefit	Medicaid FFS
Responsible For Financing Mental Health Pharmacy Benefit	Medicaid FFS
State Uses A Preferred Drug List (PDL) For General Pharmacy	No, the state does not use a PDL for FFS and covers all FDA approved drugs.
State Uses A PDL For Mental Health Drugs	
State Uses A PDL For Addiction Treatment Drugs	
Coverage Of Antipsychotic Injectable Medications	
Utilization Restrictions For Mental Health Or Addiction Treatment Drugs	Some utilization restrictions related to quantity limits or the number of prescriptions may apply.
State Has A Pharmacy Lock-In Program Or Other Restriction Program	Yes, New Jersey operates a pharmacy lock-in program for individuals who use multiple prescribers for controlled substances, use multiple pharmacies, or have multiple emergency room visits. The length of time an individual is locked into a pharmacy is determined on a case by case basis. Approximately 1% of the FFS population is in the lock-in program.

## D.3. Medicaid Managed Care Program: Overview

- Managed care enrollment as of November 2022 was 2,206,895
- The five health plans deliver physical health and long-term services and supports (LTSS) for most populations, including families and children, Medicaid expansion adults, and aged and disabled adults. For more information on these health plans, please see [slide 37](#)
  - All but one health plan is available statewide. Individuals have a choice of plans in their county.
- The health plans are eligible for performance incentive payments based on five physical health quality measures. See the next slide for performance measures.
  - The state allocated \$20,000,000 in SFY 20 for the performance-based incentive program. The program has two funding pools:
    - The performance payment pool: \$17,000,000. Eligible contractors receive performance-based incentive payments of \$0.175 multiplied by total member months during the 2020 calendar year.
    - The high performance (HP) bonus pool: \$3,000,000. Contractors that meet three of the five benchmarks will receive payment for the high-performance bonus pool. This pool will be equally divided among qualifying provider organizations.
- To receive incentive payments, MCOs must earn “commendable” National Committee for Quality Assurance (NCQA) accreditation status; this is based on their performance on Healthcare Effectiveness Data and Information Set (HEDIS) and Consumer Assessment of Healthcare Providers and Systems (CAHPS) 2020 measures.

## D.3. Medicaid Managed Care Program: Performance-Based Incentive Program Measures

Performance Incentive Measures For Health Plan Contracts as of 2021		
Metric Name	Metric Description	Benchmark Percentage
Preterm birth rate	Preterm birth rate: The percentage of live births which are less than 37 weeks of gestation for members enrolled with the same contract for six months prior to birth.	<9.25%
Prenatal care timeliness	Prenatal care timeliness: The percentage of deliveries that received a prenatal care visit as a member in the first trimester, on the enrollment start date, or within 32 days of enrollment.	>NCQA 75 <sup>th</sup> percentile for HEDIS 2021
Postpartum care timeliness	Postpartum care timeliness: The percentage of deliveries that has a postpartum visit on or between 21 and 56 days after delivery.	>NCQA 75 <sup>th</sup> percentile for HEDIS 2021
HbA1C < 8	HbA1C < 8: Assess adults ages 18 to 75 with diabetes type 1 and type 2 who have HbA1C control less than 8.0%.	>NCQA 66 <sup>th</sup> percentile for HEDIS 2021
Body mass index (BMI)	Body mass index documentation for children and adolescents: BMI percentile assessment for children ages three to 17.	>NCQA 66 <sup>th</sup> percentile for HEDIS 2021

# D.3. Medicaid Managed Care Program: Health Plan Characteristics

## Aetna Better Health

1. Profit status: For-profit
2. Parent company: Aetna
3. Behavioral health subcontractor: None
4. Pharmacy benefits manager: CVS/Caremark
5. Geographic area: Statewide
6. Enrollment share: 4%

## Amerigroup

1. Profit status: For-profit
2. Parent company: Anthem
3. Behavioral health subcontractor: None
4. Pharmacy benefits manager: IngenioRx
5. Geographic area: Statewide
6. Enrollment share: 12%

## Horizon NJ Health

1. Profit status: Non-profit
2. Parent company: Horizon Blue Cross Blue Shield of New Jersey
3. Behavioral health subcontractor: Horizon Behavioral Health
4. Pharmacy benefits manager: None
5. Geographic area: Statewide
6. Enrollment share: 52%

## UnitedHealthcare Community Plan

1. Profit status: For-profit
2. Parent company: UnitedHealth
3. Behavioral health subcontractor: Optum
4. Pharmacy benefits manager: OptumRx
5. Geographic area: Statewide
6. Enrollment share: 27%

\*As of November 2019, Enrollment in UHC is currently frozen due to operational issues.

## WellCare

1. Profit status: For-profit
2. Parent company: Centene
3. Behavioral health subcontractor: None
4. Pharmacy benefits manager: CVS/Caremark
5. Geographic area: All counties except Hunterdon
6. Enrollment share: 5%

## D.3. Medicaid Managed Care Program: Behavioral Health Overview

- In October 2018, New Jersey made changes to the financing and delivery of behavioral health benefits.
  - Most behavioral health benefits are now included in the health plan's capitation rate for individuals receiving MLTSS and Department of Developmental Disability services, as well as for dual eligibles enrolled in an aligned D-SNP.
  - For all members, the health plans are now responsible for all hospital admissions, including psychiatric unit admissions in general acute hospitals, psychiatric hospitals, and specialty care hospitals. The health plans are not responsible for state or county psychiatric hospital admissions.
- For all enrollees not receiving MLTSS services or Department of Developmental Disability services, behavioral health services continue to be excluded from the health plan's capitation rate and covered FFS by the state.
- Addiction treatment benefits for adults are managed by the state's ASO, Rutgers University Behavioral Health Care (UBHC), which is part of the state university of New Jersey.
  - New Jersey calls the ASO the interim management entity (IME).
  - The functions of the ASO include a 24/7 call center, member services, prior authorization, network management, utilization management, care coordination, quality management, etc.
  - The IME also provides utilization management for community support services.
- The health plans are responsible for all pharmacy services.
- Behavioral health services for children are managed by Children's System of Care and covered FFS.
- New Jersey's 1115 demonstration includes a substance use disorder demonstration (SUD). Under the demonstration, New Jersey received authority to:
  - Provide addiction disorder treatment services in an IMD for up to 30 days
  - Add a new level of care, long-term residential treatment
  - Provide peer recovery support specialists and care management programs for addiction disorders
  - Move to a managed delivery system that integrates physical and behavioral health care
- The 1115 Demonstration waiver is set to expire at the end of CY 22, no news whether it will be extended.

# D.3. Medicaid Managed Care Program: MLTSS Population Behavioral Health Benefits

Mental Health Benefits Included In The Health Plan's Capitation Rate	
1.	Inpatient services
2.	Outpatient services
3.	Adult mental health rehabilitation
4.	Partial care and partial hospitalization
5.	Long-term residential services

Addiction Treatment Benefits Included In The Health Plan's Capitation	
1.	Inpatient services
2.	Outpatient services
3.	Intensive outpatient services
4.	Partial care
5.	Residential detoxification
6.	Short-term and long-term residential treatment (including services in an IMD)*
7.	Ambulatory withdrawal management
8.	Peer recovery support services
9.	Medication assisted treatment

Behavioral Health Benefits Covered FFS	
1.	Targeted case management
2.	Behavioral health homes
3.	Programs in assertive community treatment (PACT)
4.	Community support services
5.	Psychiatric emergency services

# D.3. Medicaid Managed Care Program: Non-MLTSS Population Behavioral Health Benefits

Mental Health Benefits Covered FFS	
1.	Psychiatric emergency services
2.	Partial hospitalization
3.	Adult mental health rehabilitation
4.	Outpatient services
5.	Targeted case management
6.	Behavioral health home
7.	PACT
8.	Community support services

Addiction Treatment Benefits Covered FFS & Managed By IME	
1.	Non-medical withdrawal management
2.	Short-term residential (including services in an IMD)
3.	Intensive outpatient services
4.	Partial care
5.	Outpatient services
6.	Medication assisted treatment

Behavioral Health Benefits Included In The Health Plan's Capitation Rate	
1.	Inpatient medical detoxification
2.	Inpatient services
3.	Behavioral health services delivered by a primary care provider



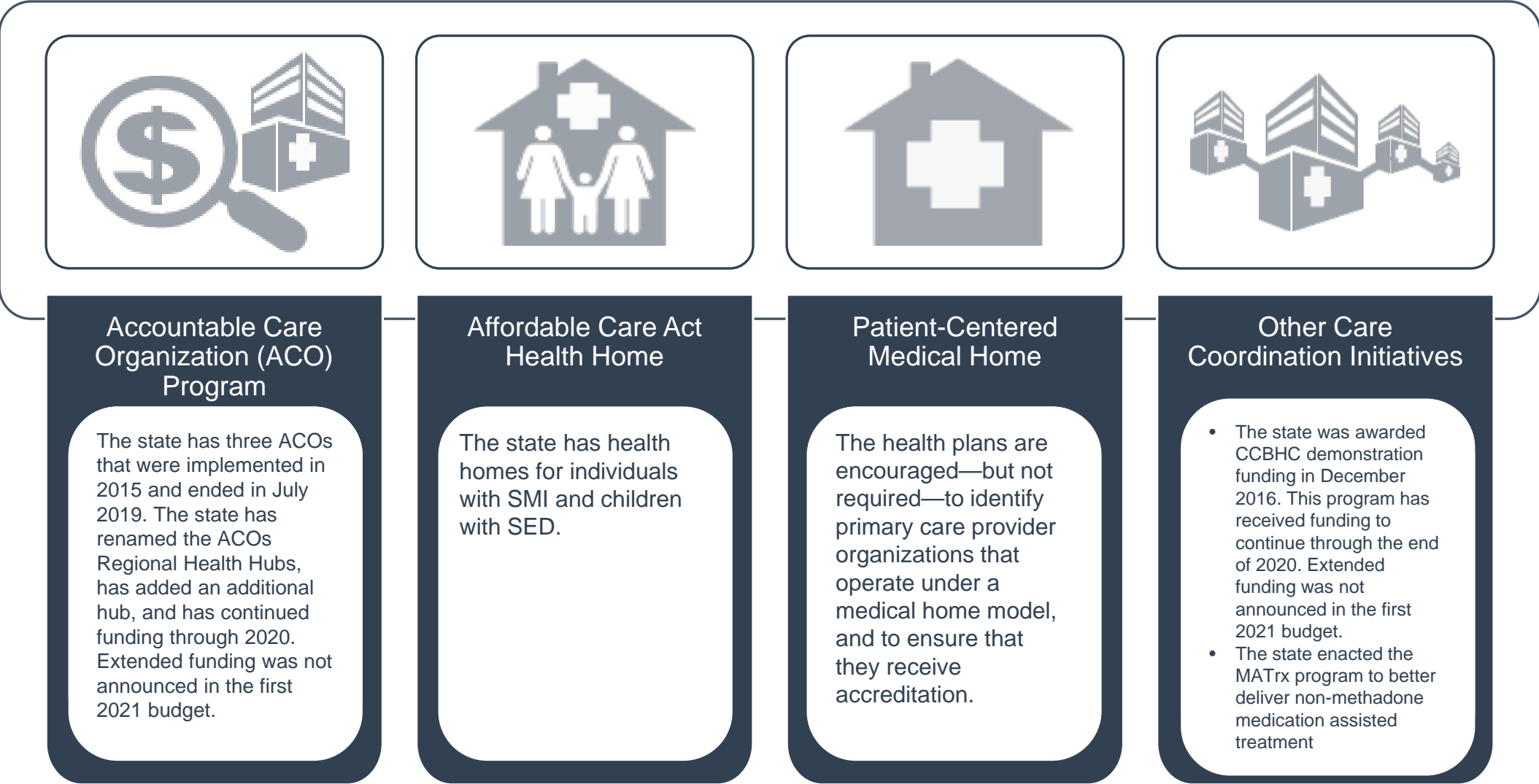
## D.3. Medicaid Managed Care Program: SMI Population

- New Jersey does not specifically preclude individuals with SMI from enrolling in managed care based on a diagnosis of SMI; however, individuals with SMI may be enrolled in FFS based on other criteria.
- As of November 2022, *OPEN MINDS* estimates that 97% of the SMI population is enrolled in managed care.

# D.3. Medicaid Managed Care Program: Pharmacy Benefit

New Jersey Managed Care Program Pharmacy Benefit	
Responsible For Financing General Pharmacy Benefit	Health plan
Responsible For Financing Mental Health Pharmacy Benefit	Health plan
Health Plan Uses A Preferred Drug List (PDL) For General Pharmacy	Yes, the health plans are able to set their own PDL, which may or may not include mental health and addiction treatment drugs.
Health Plan Uses A PDL For Mental Health Drugs	
Health Plan Uses A PDL For Addiction Treatment Drugs	
Health Plan Use Of Utilization Restrictions For Mental Health & Addiction Treatment Drugs	The health plans have the ability to set their own utilization restrictions for mental health and addiction drugs. These restrictions will vary by health plan.
Health Plan Allowed To Implement Pharmacy Lock-In Program	The health plans are required to develop lock-in programs; however, each health plan may design their own program which is subject to approval by the state.

# D.4. Medicaid Program: Care Coordination Initiatives



## D.4. Medicaid Program: Regional Health Hubs

- In 2011, the legislature passed a law mandating a three-year Medicaid ACO demonstration project. In July 2015, three ACOs were selected to participate in the Medicaid ACO demonstration project: Camden Coalition of Healthcare Providers, Healthy Greater Newark ACO, and Trenton Health Team.
  - The demonstration was slated to end in 2018; but was extended for an additional year until July 2019. The extension also included \$1 million in funds for each of the ACOs.
- Each ACO was required to be a non-profit organization, participate in a gainsharing arrangement with the state, provide services to a minimum of 5,000 beneficiaries, and contract with local entities—such as hospital, primary care, and mental health provider organizations—to deliver services in the intended region.
- The fiscal year 2020 budget has renamed the Medicaid ACOs to Regional Health Hubs (RHH) and includes \$1.5 million in funding.
  - The budget gives the Commissioner of Human Services broad authority to change the structure of the program.
  - In January 2020, the state recognized Health Coalition of Passiac County as a Regional Health Hub.
  - In this new model, each RHH will serve as the local expert and go-between for state health priorities, to take action on the state's most urgent health issues and operate as a regional health information exchange to make sure that health data is accessible and useful.
  - Between 10% and 25% of funds appropriated by DHS will be based on the hub's attainment of predetermined goals and performance metrics.
- The 2022 budget included \$2,250,000 to fund the Regional Health Hubs.

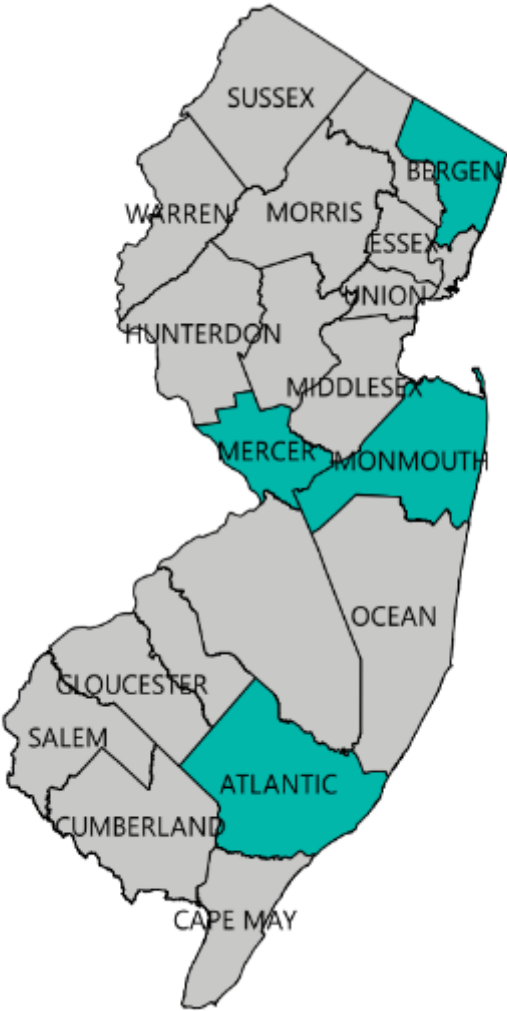
# D.4. State Medicaid Health Home Characteristics

New Jersey Behavioral Health Homes Characteristics	
Target Population	<ul style="list-style-type: none"><li>Adults with one or more SMI diagnosis</li><li>Individuals must choose between receiving PACT, targeted case management, 1915(c) services, or health home services</li><li>As of 2019, it is estimated that there are 773 individuals enrolled.</li></ul>
Enrollment Model	Eligible participants must opt-in to receive services.
Geographic Service Area	Five counties (Atlantic, Bergen, Cape May, Monmouth, and Mercer)
Care Delivery Model	<ul style="list-style-type: none"><li>Any licensed mental health provider organization may provide health home services</li><li>Delivery of the six core health home functions</li><li>Within three years of becoming a health home, an organization must co-locate primary care services in their office at least eight hours per week.</li></ul>
Payment Model	<ul style="list-style-type: none"><li>Health home provider organizations contract directly with the state</li><li>Services are reimbursed using a per member per month (PMPM) rate. Rates are established by the phase of the program the enrollee is currently engaged in:<ul style="list-style-type: none"><li>Engagement (initial three months)</li><li>Active (approximately, but not limited to, 24 months)</li><li>Maintenance (when more intense engagement is no longer necessary)</li></ul></li></ul>
Practice Performance & Improvement	<ul style="list-style-type: none"><li>Health home provider organizations must achieve health home accreditation from a national organization by year two of participation in the program</li><li>Creation of a Behavioral Health Home Learning Community</li><li>Emergency room visit, skilled nursing facility, and hospital admission rates</li><li>Change in total spending attributable to health home enrollees</li></ul>

# D.4. State Medicaid Health Home Service Areas



Counties Served	Health Home
Atlantic County	Behavioral Crossroads Recovery LLC, Helping Hand Behavioral Health, Jewish Family Service of Atlantic and Cape May Counties
Bergen County	CarePlus of NJ, Vantage Health System
Mercer County	All Access Mental Health, Catholic Charities Diocese of Trenton, Oaks Integrated Care
Monmouth County	CPC Behavioral Healthcare, Hackensack-Meridian Health, Easter Seals New Jersey, Stress Care of NJ



## D.4. Medicaid Program: CCBHCs

- In October 2015, the Substance Abuse and Mental Health Services Administration (SAMHSA) awarded New Jersey a \$982,372 phase two planning grant for a new program under section 223 of the Protecting Access to Medicare Act of 2014 to support planning efforts for certified community behavioral health clinics (CCBHCs).
- In December 2016, the state was awarded two-year demonstration funding under phase 2 of the program. The state launched its pilot on July 1, 2017, which was originally scheduled to end on June 30, 2019.
  - Congress has approved the Empowering Beneficiaries, Ensuring Access, and Strengthening Accountability Act of 2019 (H.R. 3253) which extends the demonstration program until September 13, 2019.
  - As of August 2019, the House introduced a bill, Excellence in Mental Health and Addiction Treatment Expansion Act (H.R. 1767), to extend the CCBHC grant for two years, and expand the funding to 11 additional states.
  - In December 2019, Congress passed an extension of funding through FY2020. The CCBHCs are currently operating under federal funding, while waiting for 2021 budgets.
- New Jersey has certified seven CCBHCs for the pilot, each of which serves a designated county area.
- Of the two prospective payment systems authorized through the CCBHC program, the state has opted to use the monthly unit of payment method.
  - The monthly payment method allows for variable rates depending on the populations served by the CCBHC, while also incorporating quality bonus payments.
- CCBHCs coordinate care across the spectrum of health services, including physical health, behavioral health, and social services. CCBHCs will be required to form partnerships with other organizations, including FQHCs, inpatient psychiatry, detoxification and post-detoxification step-down services, residential programs, and social services provider organizations.

## D.4. Medicaid Program: CCBHC and Service Areas

CCBHC	County Served	Demonstration or Expansion Status
Acenda, Inc	Atlantic, Burlington, Camden, Cape May, Cumberland, Gloucester, Mercer, Monmouth, Ocean, Salem	Expansion Grantee
AtlantiCare Behavioral Health	Atlantic	Demonstration, Expansion Site
Family Connections	Essex	Expansion Grantee
Care Plus New Jersey	Bergen	Demonstration Site, Expansion Site
Integrity House	Essex	Expansion Grantee
Family Guidance Center of Warren County	Warren	Expansion Site
Trinitas Regional Medical Center	Union	Expansion Grantee
Northwest Essex Community Healthcare Network	Essex	Demonstration Site, Expansion Site
SERV Centers of New Jersey, Inc	Mercer	Expansion Grantee
Ocean Mental Health Services, Inc	Ocean	Expansion Grantee
Rutgers University Behavioral Health Care	Essex, Middlesex	Demonstration Site, Expansion Site
Catholic Charities, Diocese of Trenton	Mercer	Demonstration Site, Expansion Site
Preferred Behavioral Health of New Jersey, Inc	Ocean	Expansion Grantee



## D.4. Medicaid Program: CCBHC and Service Areas (cont.)

CCBHC	County Served	Demonstration or Expansion Status
Oaks Integrated Care	Atlantic, Burlington, Camden, Cumberland, Bergen, Gloucester, Hudson, Hunterdon, Mercer, Monmouth, Morris, Ocean, Passaic, Somerset, Sussex, Warren	Demonstration Site, Expansion Site
CPC Behavioral Healthcare	Monmouth	Demonstration Site, Expansion Site
County of Somerset	Somerset	Expansion Grantee
Bridgeway Rehabilitation Services, Inc	Union	Expansion Grantee
Richard Hall CMHC of Somerset County	Somerset	Expansion Grantee
Lakewood Community Services Corp	Ocean	Expansion Grantee
Monmouth Medical Center	Monmouth	Expansion Grantee
Team Management 2000 Inc	Bergen	Expansion Grantee

## D.4. Medicaid Program: MATrx Model

- In January 2019, New Jersey implemented a new concept for delivering non-methadone medication assisted treatment (MAT), called the MATrx.
  - The model builds on the Pennsylvania and Rhode Island Centers of Excellence models and the Vermont Hub and Spoke model.
- Under the model, there are three types of provider organizations that can induce and sustain MAT:
  - Centers of Excellence: Organizations who are able to provide integrated care (physical and mental health and addiction treatment) and treat complex consumers. They use best practices and serve as a resource for the community and other clinical professionals.
  - Premier Providers: FQHCs, CCBHCs, and opioid treatment programs that qualify through a certification process and provide integrated or connected care. They must coordinate care for physical and counseling services that cannot be provided on-site.
  - Office-based Addiction Treatment: Clinical professionals with waivers to provide buprenorphine who affiliate with Premier Providers or Centers of Excellence to provide integrated care.
- The three types of provider organizations are required to deliver integrated care, counseling services, and MAT induction, stabilization, and maintenance. However, some provider organizations deliver additional MATrx services (see next slide). The state's payment model for each provider organization type is dependent upon the services provided.
  - Intake and assessment services have a one-time fee of \$438.17 to be paid on the initial visit to the provider organization.
  - Stabilization services are billed \$76 per week with a six week limit, or \$76 per month with no monthly limit.
  - Maintenance services cost \$76 per month and continue based on an individual's need.
  - Navigator, or case management, services are provided by office-based addiction treatment and Center of Excellence provider organizations and have a one-time fee of \$152.

# D.4. Medicaid Program New Initiatives: MATrx Model Services

Characteristics Of MATrx Organizations			
MATrx Services	Centers Of Excellence	Premier Providers	Office-Based Addiction Treatments
Integrated care for physical and behavioral health needs	Required	Required	Required
Capability for MAT induction, stabilization, and maintenance	Required	Required	Required
Ability to see MAT referrals within 24-48 hours	Required	N/A	N/A
Ability to utilize peer support services	Required	N/A	N/A
Ability to provide case management/navigation	Optional	N/A	Required
Ability to provide behavioral health counseling on-site, through affiliation, or through telemedicine	Required	Required	Required

# D.5. Medicaid Program: Demonstration & Care Management Waivers

Waiver Title	Waiver Description	Waiver Type	Enrollment Cap	Effective Date	Expiration Date
New Jersey FamilyCare Comprehensive Demonstration (formerly New Jersey Comprehensive Waiver)	Authorizes the state’s managed care and MLTSS programs, as well as a number of other programs, including: <ul style="list-style-type: none"><li>• The use of an ASO for addiction treatment services</li><li>• Enhanced addiction treatment benefit and coverage of services in an institution for mental disease (IMD)</li><li>• Delivery System Reform and Incentive Program for the state’s hospitals</li></ul>	1115	None	10/02/2012	12/31/2022

New Jersey’s 1115 demonstration includes an amendment currently pending as of November 2022. This amendment would add:

- Extended coverage to women 180 days postpartum.
- Federal funding for the Substance Use Disorder Promoting Interoperability Program.

## D.5. Medicaid Program: Section 1915 (c) HCBS Waivers

- The state has no current 1915 (c) HCBS waivers.

## D.6. Medicaid Program New Initiatives: Quality Improvement Program

- In March 2020, the state presented a new program, the Quality Improvement Program- New Jersey (QIP-NJ), focused on continued population health improvement. The main focus is to advance quality improvements in maternal and behavioral health statewide and will focus on maternal health and behavioral health.
- Hospitals will earn QIP-NJ incentive payments through performance targets of state-selected quality measures. These measures include:
  - Maternal care process improvements
  - Reduce maternal morbidity
  - Improve connections to behavioral health services
- Payments will be distributed to the hospitals by the managed care plans and will be tied to Medicaid services and utilization.
- Funding will be determined by the size of the populations the hospital serves, and the hospital's performance on performance targets. No payments will be earned for reporting or for partial achievements.
- The program began on July 1, 2021. The first payment to the hospitals is planned for early 2022.
- DOH has completed the final review of the MY1 non-claims-based (NCB) measure results following appeals. These final MY1 NCB results will be used along with forthcoming MY1 claims-based (MMIS) measure results to calculate MY1 Performance Payments.
- DOH also submitted a targeted MY1 Bridge Payment Preprint, for the period of July 1, 2021 through December 31, 2021. DOH is directing this one-time payment arrangement to help ensure that hospitals with a high Relative Medicaid Percentage (RMP) have funding for continued response and recovery resulting from the COVID19 pandemic, as well as to promote better access to care for MMC individuals in light of the COVID-19 pandemic. As a reminder, these payments will cover MMC inpatient bed days at acute care hospitals for the period July 1, 2021 through December 31, 2021, broken out by MMCO. DOH anticipates releasing the Bridge Payment in late July 2022.

## D.6. Medicaid Program New Initiatives: QIP-NJ Behavioral Health Measures

QIP-NJ Behavioral Health Measures		
Measure #	Measure Type	Measure name
BH1	MMIS**	30 Day All-Cause Unplanned Readmission following psychiatric inpatient hospitalization
BH2	MMIS	Follow-Up after hospitalization for mental illness
BH3	MMIS	Potentially preventable ED visits
BH4	MMIS	Follow-up after ED visit for mental illness or alcohol and other drug abuse or dependence
BH5	MMIS	Diabetes screening for people with schizophrenia or bipolar disorder using antipsychotic medications
BH6	MMIS	Initiation and engagement of alcohol and other drug abuse or dependence treatment
BH7	MMIS	Use of Pharmacotherapy for Opioid Use Disorder
BH8	MMIS	Continuity of Care for Medicaid Beneficiaries after Detoxification from Alcohol and/or drugs
BH9	Chart/EHR	Timely transmission of the transition record
BH10*	Instrument	3-item care transitions measure
BH11*	Instrument	Use of a standardized screening tool for social determinants of health

\*These measures must be submitted by the hospital but will not be used to receiving funding.

\*\* Medicaid Management Information System

## E. Dual Eligible Financing & Service Delivery System



## E.1. Dual Eligible Medicaid Financing & Service Delivery System

Dual Eligible* Medicaid System Characteristics		
Characteristics	Medicaid Managed Care	PACE
Enrollment (May 2022)	195,100	1001
Estimated SMI Enrollment	62,432	320
Management	<ul style="list-style-type: none"><li>Physical health: Five health plans</li><li>Behavioral health: Department of Human Services and Regional Health Hubs</li></ul>	Six programs
Payment Model	<ul style="list-style-type: none"><li>Physical health: Capitated rate</li><li>Behavioral health: FFS and administrative rate</li></ul>	Blended capitated rate
Geographic Service Area	Statewide	There are six PACE agencies operating in select ZIP codes.

**Total Dual Eligible Enrollment: 196,101 | Total Dual Eligible Enrollment With SMI: 62,752**

\*Unless otherwise noted, the term *dual eligibles* in this section refers to Medicare enrollees with full Medicaid benefits.

## E.2. Largest Dual Eligible Health Plans By Estimated SMI Enrollment

Health Plans	Parent Company	Plan Type	May 2022 Enrollment	Estimated SMI Enrollment
UnitedHealthcare Dual Complete ONE	UnitedHealthcare	Medicare Advantage D-SNP	28,278	9,048
Horizon Medicare Blue Advantage	Horizon Healthcare of New Jersey, Inc	Medicare Advantage D-SNP	16,275	5,208
Amerivantage Dual Coordination	Amerigroup New Jersey, Inc	Medicare Advantage D-SNP	11,748	3,759
WellCare Liberty	WellCare Health Plans, Inc	Medicare Advantage D-SNP	6,447	2,063
Aetna Assure Premier Plus	Aetna	Medicare Advantage D-SNP	901	288
Amerivantage Dual Secure	Amerigroup New Jersey, Inc	Medicare Advantage D-SNP	682	218
LIFE Saint Francis	Trinity Health	PACE	251	80
Inspire LIFE	Inspira Health Network	PACE	234	74
LIFE at Lourdes	Virtua Health	PACE	164	52
Beacon of LIFE	N/A	PACE	150	48

## E.3. Dual Eligible Medicaid Financing & Delivery System: Overview

- Dual eligible enrollment as of May 2022 was 196,101.
- Medicare covers most acute services (which may include psychiatric care), while Medicaid, the payer of last resort, covers LTSS and non-physician behavioral health services.
- Full benefit dual eligibles must enroll in one of the five health plans to receive physical and behavioral health services. Partial benefit dual eligibles must enroll in FFS.
- D-SNP enrollment as of May 2022 was 83,172, SMI enrollment for D-SNP was 26,615.

## E.4. Dual Eligible Medicaid Financing & Delivery System: New Initiatives

- As a part of New Jersey's health integration, most behavioral health benefits are now included in the health plan's capitation rate for dual eligibles enrolled in an aligned D-SNP.
- There are no other dual eligible initiatives pending.

# F. Long-Term Services & Supports Financing & Service Delivery System

# F.1. LTSS Financing & Service Delivery System

LTSS Medicaid System Characteristics	
Characteristics	Medicaid Managed Care
Enrollment (December 2022)	55,196
Estimated SMI Enrollment	19,318
Management	<ul style="list-style-type: none"><li>Physical health: Five health plans</li><li>Behavioral health: Department of Human Services and Regional Health Hubs</li><li>Pharmacy:</li></ul>
Payment Model	<ul style="list-style-type: none"><li>Physical health: Capitated rate</li><li>Behavioral health: Capitated rate</li></ul>
Geographic Service Area	Statewide

**Total LTSS Enrollment: 55,196 | Total LTSS Enrollment With SMI: 19,318**

# F.1. Medicaid LTSS Service Delivery System Enrollment By Eligibility Group

Population	Mandatory FFS Enrollment	Option To Enroll In FFS Or Managed Care	Mandatory Managed Care Enrollment
Disabled adults			X
Disabled children			X
Blind individuals			X
Aged individuals			X
Dual eligibles	X (partial benefit)		X (full benefit)
Individuals with I/DD			X
Individuals residing in nursing homes	X		
Individuals residing in ICF/IDD	X		
Other HCBS Recipients			X
Other populations	<ul style="list-style-type: none"> <li>Individuals institutionalized in an inpatient psychiatric institution</li> <li>Individuals who are considered medically needy</li> </ul>		

## F.2. LTSS Medicaid Financing & Delivery System: Overview

- LTSS beneficiary enrollment as of December 2022 is 55,196.
- In New Jersey, LTSS beneficiaries receive long-term services and supports through the Medicaid managed care health plans.
- NJ Family Care provides comprehensive physical health and long-term services and supports to a majority of beneficiaries (with the exception of partial dual eligible, and individuals residing in nursing homes).
  - The MLTSS services are rendered through the five managed care health plans offered statewide, except for one plan that is not available in one county.
- The health plans are eligible for performance incentive payments based on five physical health quality measures.
  - The state has allocated \$20,000,000 in SFY 20 for the performance-based incentive program. The program has two funding pools:
    - The performance payment pool: \$17,000,000. Eligible contractors receive performance-based incentive payments of \$0.175 multiplied by total member months during the 2020 calendar year.
    - The high performance (HP) bonus pool: \$3,000,000. Contractors that meet three of the five benchmarks will receive payment for the high performance bonus pool. This pool will be equally divided among qualifying provider organizations.
- To receive incentive payments, MCOs must earn “commendable” National Committee for Quality Assurance (NCQA) accreditation status; this is based on their performance on Healthcare Effectiveness Data and Information Set (HEDIS) and Consumer Assessment of Healthcare Providers and Systems (CAHPS) 2020 measures.
- Behavioral health services are provided fee-for-service by the state and through the department’s administrative services organization (ASO).



# F.3. Medicaid LTSS Program: Health Plan Characteristics

Aetna Better Health
1. Profit status: For-profit
2. Parent company: Aetna
3. Behavioral health subcontractor: None
4. Pharmacy benefits manager: CVS/Caremark
5. Geographic area: Statewide
6. Estimated LTSS enrollment share: Not available

Amerigroup
1. Profit status: For-profit
2. Parent company: Anthem
3. Behavioral health subcontractor: None
4. Pharmacy benefits manager: IngenioRx
5. Geographic area: Statewide
6. Enrollment share: Not available

Horizon NJ Health
1. Profit status: Non-profit
2. Parent company: Horizon Blue Cross Blue Shield of New Jersey
3. Behavioral health subcontractor: Horizon Behavioral Health
4. Pharmacy benefits manager: None
5. Geographic area: Statewide
6. Enrollment share: Not available

UnitedHealthcare Community Plan
1. Profit status: For-profit
2. Parent company: UnitedHealth
3. Behavioral health subcontractor: Optum
4. Pharmacy benefits manager: OptumRx
5. Geographic area: Statewide
6. Enrollment share: Not available

WellCare
1. Profit status: For-profit
2. Parent company: Centene
3. Behavioral health subcontractor: None
4. Pharmacy benefits manager: CVS/Caremark
5. Geographic area: All counties except Hunterdon
6. Enrollment share: Not available

\*All MLTSS is Covered by Medicaid Health Plans

# F.4. Medicaid LTSS Program: Health Benefits

- Physical health services for the LTSS population are integrated through the managed care health plans.
- Behavioral health and addiction treatment services are reimbursed fee-for-service.

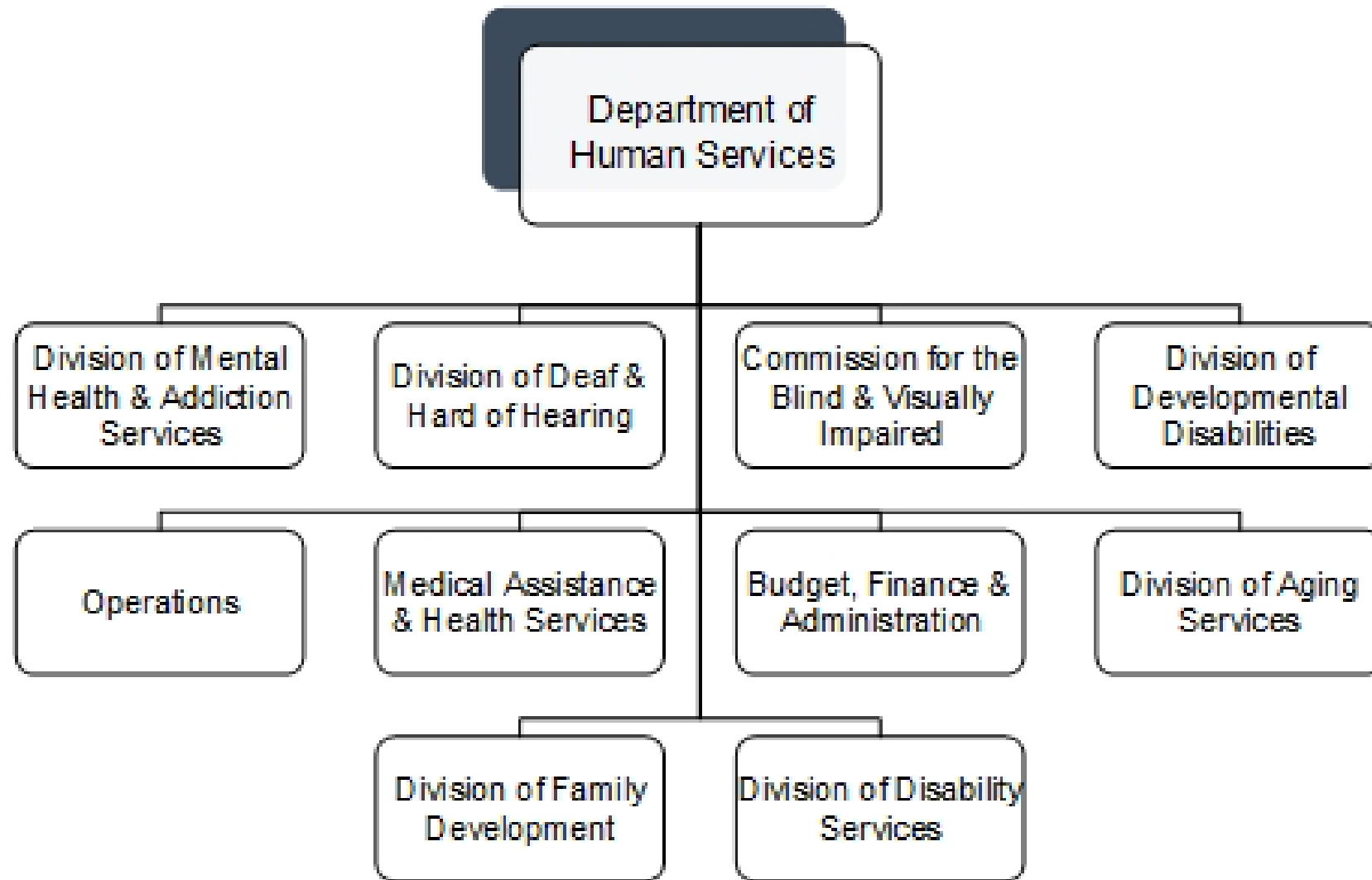
LTSS Mental Health Benefits	LTSS Addiction Treatment Benefits	LTSS Physical Care Benefits
<div><div>1.</div><div>Inpatient services</div></div> <div><div>2.</div><div>Partial Care</div></div> <div><div>3.</div><div>Medication management</div></div> <div><div>4.</div><div>Testing and assessment</div></div> <div><div>5.</div><div>Crisis assessment</div></div> <div><div>6.</div><div>Programs of assertive community treatment</div></div> <div><div>7.</div><div>Individual, group, and family counseling</div></div> <div><div>8.</div><div>Rehabilitative services</div></div> <div><div>9.</div><div>Service plan</div></div> <div><div>10.</div><div>Psychiatric emergency rehabilitation services</div></div> <div><div>11.</div><div>Community support services</div></div> <div><div>12.</div><div>Integrated/targeted case management</div></div> <div><div>13.</div><div>Peer Support Services</div></div> <div><div>14.</div><div>Applied Behavioral Analysis</div></div>	<div><div>1.</div><div>Inpatient services</div></div> <div><div>2.</div><div>Partial Care</div></div> <div><div>3.</div><div>Medication management</div></div> <div><div>4.</div><div>Outpatient services</div></div> <div><div>5.</div><div>Intensive outpatient services</div></div> <div><div>6.</div><div>Partial care</div></div> <div><div>7.</div><div>Residential detoxification</div></div> <div><div>8.</div><div>Short-term residential treatment (including services in an IMD)</div></div> <div><div>9.</div><div>Ambulatory withdrawal management</div></div> <div><div>10.</div><div>Medication assisted treatment (MAT)</div></div> <div><div>11.</div><div>Peer Support Services</div></div> <div><div>12.</div><div>Office-based addiction treatment services</div></div>	<div><div>1.</div><div>Personal Care</div></div> <div><div>2.</div><div>Respite</div></div> <div><div>3.</div><div>Care Management</div></div> <div><div>4.</div><div>Home and Vehicle Modifications</div></div> <div><div>5.</div><div>Home Delivered Meals</div></div> <div><div>6.</div><div>Personal Emergency Response Systems</div></div> <div><div>7.</div><div>Assisted Living</div></div> <div><div>8.</div><div>Nursing Home Care</div></div> <div><div>9.</div><div>Physical or Occupational Therapy</div></div>

## F.5. LTSS Medicaid Financing & Delivery System: New Initiatives

- New Jersey has no pending initiatives that will influence the finance or delivery systems of the LTSS population.

# G. State Behavioral Health Administration & Finance System

## G.1. Division Of Mental Health & Addiction Services: Organization Chart



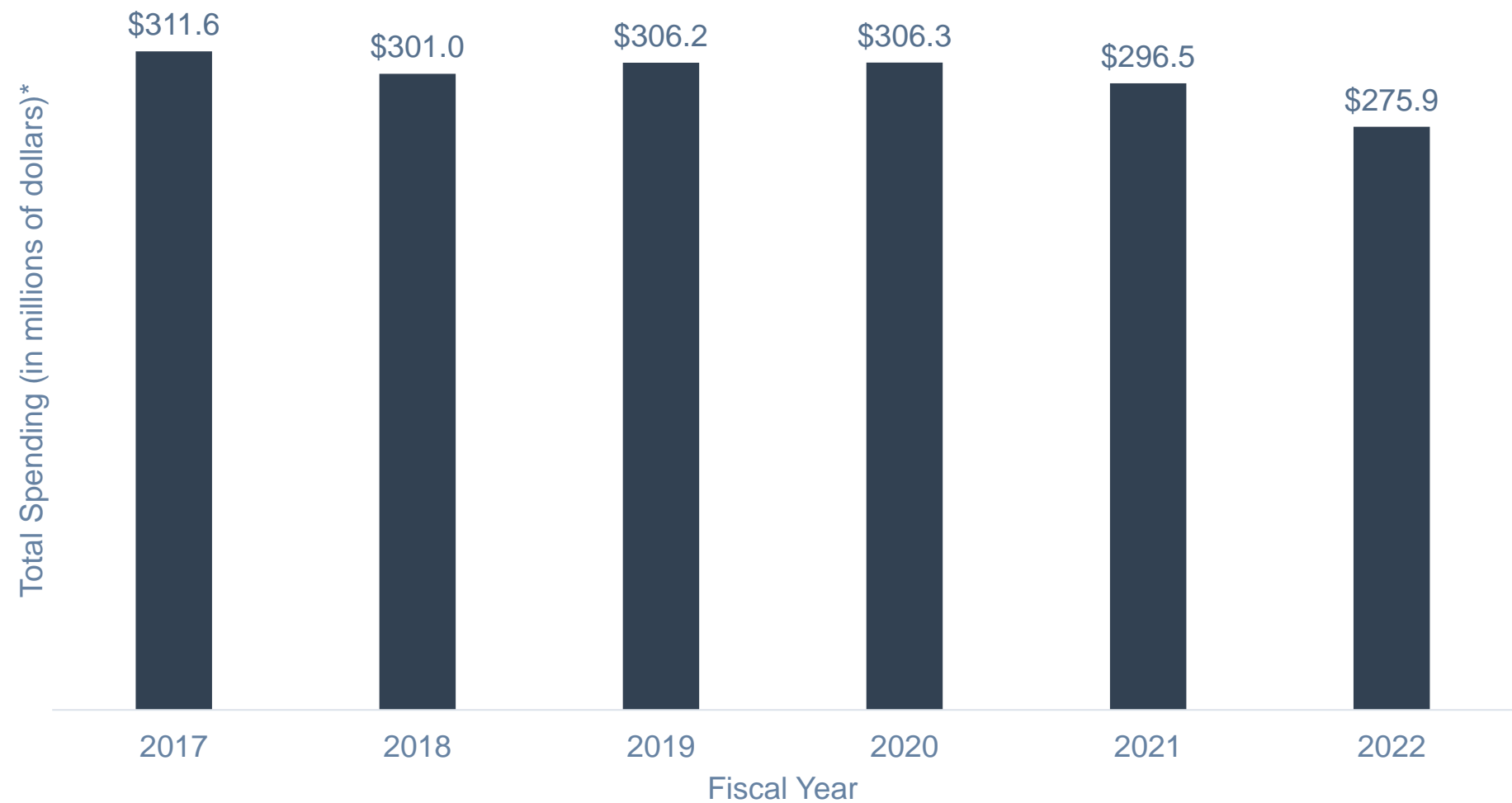
## G.1. Division Of Mental Health & Addiction Services: Key Leadership

Name	Position	Department	Email
Sarah Adelman	Acting Commissioner	Department of Human Services (DHS)	sarah.adelman@dhs.state.nj.us
Lisa Asare	Deputy Commissioner of Health Services	DHS	elisa.neira@dhs.state.nj.us
Valerie Mielke, MSA	Assistant Commissioner	DHS, Division of Mental Health and Addiction Services	valerie.mielke@dhs.nj.gov
Jon Chebra	Chief of Staff	DHS, Division of Mental Health and Addiction Services	jonathan.chebra@dhs.nj.gov
Robert Eilers, M.D.	Medical Director	DHS, Division of Mental Health and Addiction Services	robert.eilers@dhs.state.nj.us
Susanne Rainier	Community Services Administrator	DHS, Division of Mental Health and Addiction Services	Susanne.Rainier@dhs.state.nj.us

## G.2. Division Of Mental Health & Addiction Services: Spending

Budget Item	SFY 2022 Revised Budget	Percent Of Budget
Supported housing	\$135,010,851	49%
Residential care	\$42,678,521	15%
Screening services	\$28,080,306	10%
Outpatient services	\$19,197,183	7%
Assertive community treatment (ACT)	\$15,834,202	6%
Partial care	\$12,672,518	5%
Early intervention and support services	\$11,893,905	4%
Integrated case management	\$9,449,996	3%
State psychiatric hospitals	\$1,138,414	<1%
<b>Total: \$275,955,896</b>		

# G.2. Department Of Mental Health & Addiction: Spending Over Time





# G.3. Behavioral Health Hospital Capacity

State Psychiatric Institutions					
Institution	Location	Beds	FY 2022 Admissions	FY 2022 Discharges	FY 2022 Average Monthly Census
Ancora Psychiatric Hospital	Ancora	600	310	301	305
Trenton Psychiatric Hospital	West Trenton	400	204	209	303
Ann Klein Forensic Center	West Trenton	200	160	160	181
Greystone Park Psychiatric Hospital	Morris Plains	552	192	173	352
Total		1,752	866	843	1,141

## G.4. Behavioral Health Safety-Net Delivery System

- The Division of Mental Health and Addiction Services (DMHAS) contracts with 120 non-profit community mental health service provider organizations to provide mental health treatment services to the uninsured population. Available services include:
  - Outpatient care
  - Partial care
  - Integrated case management
  - Assertive community treatment programs
  - Supported employment services
  - System advocates
- DMHAS contracts with Rutgers University Behavioral Health Care (UBHC) to administer state and federal grant funded addiction services.
  - Treatment is provided by a network of provider organizations.
  - Individuals access treatment through a UBHC telephone screening, or by a provider organization associated with UBHC.

# H. Appendices

## H.1. *OPEN MINDS* Estimates For Share Of SMI Consumers Per Payer/Plan

Enrollment Category	Serious Mental Illness (SMI) Prevalence Estimate	Source
Commercial	4.1% of the commercially insured population over age 18	Substance Abuse and Mental Health Services Administration. (2022, January). Results from the 2020 National Survey on Drug Use and Health: Mental Health Detailed Tables. Retrieved October 2022 from <a href="https://www.samhsa.gov/data/sites/default/files/reports/rpt35323/NSDUHDetailedTabs2020v25/NSDUHDetailedTabs2020v25/2020NSDUHDetTabs01112022.zip">https://www.samhsa.gov/data/sites/default/files/reports/rpt35323/NSDUHDetailedTabs2020v25/NSDUHDetailedTabs2020v25/2020NSDUHDetTabs01112022.zip</a>
Medicaid	35.9% of adults age 18 to 64, not dually eligible for Medicare, who qualify for Medicaid based on a disability	Medicaid and CHIP Payment and Access Commission. (2022, June). Report to Congress on Medicaid and Chip. Retrieved October 2022 from <a href="https://www.macpac.gov/publication/june-2022-report-to-congress-on-medicare-and-chip/">https://www.macpac.gov/publication/june-2022-report-to-congress-on-medicare-and-chip/</a>
	8.1% of persons in the Medicaid expansion population	Substance Abuse and Mental Health Services Administration. (2022, January). Results from the 2020 National Survey on Drug Use and Health: Mental Health Detailed Tables. Retrieved October 2022 from <a href="https://www.samhsa.gov/data/sites/default/files/reports/rpt35323/NSDUHDetailedTabs2020v25/NSDUHDetailedTabs2020v25/2020NSDUHDetTabs01112022.zip">https://www.samhsa.gov/data/sites/default/files/reports/rpt35323/NSDUHDetailedTabs2020v25/NSDUHDetailedTabs2020v25/2020NSDUHDetTabs01112022.zip</a>
Medicare	16% of persons in the Medicare population, not dually eligible for Medicaid	Centers for Medicare and Medicaid Services. (2021). Medicare-Medicaid Coordination Office Report to Congress. Retrieved October 2022 from <a href="https://www.cms.gov/files/document/reporttocongressmmco.pdf">https://www.cms.gov/files/document/reporttocongressmmco.pdf</a>

## H.1. *OPEN MINDS* Estimates For Share Of SMI Consumers Per Payer/Plan

Enrollment Category	Serious Mental Illness (SMI) Prevalence Estimate	Source
Medicare-Medicaid Dual Eligibility	25% of persons in the Medicare population dually eligible for partial Medicaid benefits	Congressional Budget Office. (2013, June). Dual-Eligible Beneficiaries of Medicare and Medicaid: Characteristics, Health Care Spends, and Evolving Policies. Retrieved October 2022 from <a href="https://www.cbo.gov/sites/default/files/113th-congress-2013-2014/reports/44308_DualEligibles2.pdf">https://www.cbo.gov/sites/default/files/113th-congress-2013-2014/reports/44308_DualEligibles2.pdf</a>
	32% of persons in the Medicare population dually eligible for full Medicaid benefits	U.S. Department of Health and Human Services. (2019, May 9). Analysis of Pathways to Dual Eligible Status: Final Report. Retrieved October 2022 from <a href="https://aspe.hhs.gov/basic-report/analysis-pathways-dual-eligible-status-final-report">https://aspe.hhs.gov/basic-report/analysis-pathways-dual-eligible-status-final-report</a>
Other Public	8.3% of persons served by the Veterans Administration health care system or the TRICARE military health system	Military Health Systems. (2020, August 7). Examination of Mental Health Accession Screening: Predictive Value of Current Measures and Report Processes. Retrieved October 2022 from <a href="https://www.health.mil/Reference-Center/Presentations/2019/11/04/Examination-of-Mental-Health-Accession-Screening-Update">https://www.health.mil/Reference-Center/Presentations/2019/11/04/Examination-of-Mental-Health-Accession-Screening-Update</a>
No Health Care Insurance	6.2% of uninsured persons over age 18	Substance Abuse and Mental Health Services Administration. (2019, August). Results from the 2018 National Survey on Drug Use and Health: Mental Health Detailed Tables. Retrieved December 16, 2019 from <a href="https://www.samhsa.gov/data/sites/default/files/cbhsq-reports/NSDUHDetailedTabs2018R2/NSDUHDetailedTabs2018.pdf">https://www.samhsa.gov/data/sites/default/files/cbhsq-reports/NSDUHDetailedTabs2018R2/NSDUHDetailedTabs2018.pdf</a>

## H.2. Glossary Of Terms

Word	Abbreviation	Definition
<b>Alternative Benefit Plan</b>	ABP	State designed benefit package for the Medicaid expansion population (childless adults with income below 138% of the FPL). The benefit package must include the ten essential benefits as laid out in the PPACA. The Medicaid expansion population deemed medically frail (including those with SMI) are exempt from receiving benefits through the ABP.
<b>Accountable Care Organizations</b>	ACO	ACOs are groups of provider organizations—such as physicians and hospital systems—that form an agreement to coordinate care for a set group of individuals. If the ACO delivers high quality care—measured through performance metrics—and lowers the cost of providing care against a baseline, then the organization receives a portion of the savings generated. ACOs can exist alongside all payment structures (fee-for-service and managed care delivery systems) and payers (Medicare, Medicaid, commercial).
<b>Administrative Services Organization</b>	ASO	An arrangement in which an organization hires a third party to deliver administrative services to the organization, such as claims processing and billing. The ASO is not at-risk.
<b>Capitation</b>		A set amount of money paid per enrollee per month to a health care entity to cover the cost of health care services. Capitation can cover the cost of all health care services or subset of services, such as care coordination or home- and community-based services.
<b>Carve-out</b>		A carve-out is a Medicaid managed care financing model where some portion of Medicaid benefits—dental services, pharmacy services, behavioral health services, etc.—are separately managed and/or financed. Carve-out services can be financed on an at-risk basis by another organization or retained by the state Medicaid agency on a fee-for-service basis.
<b>Certified Community Behavioral Health Clinic</b>	CCBHC	Behavioral health clinics specially certified in a demonstration established by section 223 of the Protecting Access to Medicare Act of 2014. The clinics are designed to provide community-based mental health and addiction treatment services, to advance the integration of behavioral health with physical health care, and to provide care coordination across the full spectrum of health services.

## H.2. Glossary Of Terms

Word	Abbreviation	Definition
<b>Community Mental Health Center</b>	CMHC	An organization that can demonstrate that it is actively providing all services in section 1913(c)(I) of the Public Health Services Act, including a.) Outpatient services, including specialized outpatient services for children, the elderly, individuals who are chronically mentally ill, and residents of the CMHC's mental health service area who have been discharged from inpatient treatment at a mental health facility; b.) 24 hour-a-day emergency care services; c.) Day treatment, or other partial hospitalization services, or psychosocial rehabilitation services; and d.) Screening for patients being considered for admission to state mental health facilities to determine the appropriateness of such admission. Additionally, the organization must meet the specifications for the state where it provides services.
<b>Dual Eligible</b>		An individual who is eligible for Medicare (Part A and B) and Medicaid. Medicare serves as the individual's primary insurance, and Medicaid acts as a supplement. Dual eligibles are sometimes referred to as Medicare-Medicaid enrollees (MMEs).
<b>Federal Poverty Level</b>	FPL	The U.S. Department of Health and Human Services sets a standard level of income that is used to determine eligibility for services and benefits, including Medicaid. In 2023, the FPL is \$13,590 for an individual and \$27,750 for a family of four.
<b>Fee-For-Service</b>	FFS	A system where the payer, in this case there does not have to be a contract in place for Medicaid, this can be contracted or not, on a unit-by-unit basis. Health plans may also reimburse provider organizations on a FFS basis meaning they pay for each unit of care or test.
<b>Health Home</b>		A “whole person” care coordination model that specifically targets populations with chronic conditions including those with SMI. Health homes provide six essential functions: 1.) Comprehensive care management; 2.) Care coordination and health promotion; 3.) Comprehensive transitional care from inpatient to other settings, including appropriate follow-up; 4.) Individual and family support; 5.) Referral to community and social support services; 6.) Use of health information technology to link services. Health homes were originally developed as a Medicaid program; but since have been adopted by other payers. For a state to have an official health home program they must have an approved state plan amendment.

## H.2. Glossary Of Terms

Word	Abbreviation	Definition
Health Insurance Marketplace	HIM	Created by the PPACA, the health insurance marketplace is an online platform where individuals and small businesses can purchase health insurance. The federal government subsidizes coverage purchased on the marketplace through premium tax credits for individuals with income up to 400% of the FPL.
Home- & Community-Based Services	HCBS	Long-term services and supports provided in the home or community in order to avoid institutionalization. Traditionally provided through 1915(c) waivers, HCBS services are usually limited to specific populations and a specific number of people. HCBS services include skilled nursing care, personnel care services, assistance with activities of daily living, and custodial care.
Institutions For Mental Disease	IMD	A hospital, nursing facility, or other institution of more than 16 beds that is primarily engaged in providing diagnosis, treatment, or care of persons with mental diseases, including addiction. Federal financial participation is available for Medicaid IMD services for individuals under the age of 21 and age 65 and over. In recent years, CMS has relaxed the rules prohibiting payments in IMDs for individuals age 21-64. Medicaid health plans may provide up to 15 days of IMD services per month in lieu of state plan services if medically appropriate, cost effective, and consented to by the individual. Additionally, states may be granted a 1115 waiver authority to allow individuals to receive addiction and mental health treatment in IMDs.
Long-Term Services & Supports	LTSS	Services provided in the home, community, or institutional setting to those who experience difficulty living independently and completing activities of daily living as a result of cognitive disabilities, physical impairments, disabling chronic conditions, and/or age.
Managed Care		A health care delivery and financing system designed to manage cost, utilization, and quality. In Medicaid, states generally implement managed care through contracts with health plans, which provide a limited set of benefits to enrollees through a capitated or per person per month (PMPM) rate. The health plans generally assumes full-risk for the cost of treatment, and therefore contracts with a network of provider organizations to provide care at the most efficient rate possible while still maintaining member health.



## H.2. Glossary Of Terms

Word	Abbreviation	Definition
Medicaid		Medicaid is a joint federal-state program that provides health coverage to economically disadvantaged populations, such as low-income adults, children, and aged, blind, and disabled (ABD) individuals. States establish their own eligibility standards, benefit packages, provider payment policies, and administrative structures under broad federal guidelines. Financing is a shared responsibility of the federal government and the states.
Medicaid Waiver		Granted by CMS, waivers allow states to make temporary changes to their Medicaid program in order to test out new ways to deliver health coverage.
Medicaid Waiver Section 1115	1115 waiver	Known as research and demonstration waivers, states can apply for program flexibility to test new or existing approaches to financing and delivering Medicaid and CHIP.
Medicaid Waiver Section 1915(b)	1915(b) waiver	States can apply for waivers to provide services through managed care delivery systems, or otherwise limit an individual's choice of health plan or provider organization.
Medicaid Waiver Section 1915(c)	1915(c) waiver	States can apply for waivers to provide long-term care services in home- and community-based settings, rather than institutional settings.
Medical Home		A medical home is not a physical place, but a model for care coordination. Medical homes provide primary care services, care coordination, enhanced access to care, and care that is culturally and linguistically appropriate. Medical homes exist across multiple payers.
Medicare		Federal health insurance for individuals over the age of 65, individuals with certain disabilities, and individuals with end stage renal disease. Medicare covers most acute care services (which may include psychiatric care), but does not cover LTSS or non-physician behavioral health services.
Medicare Advantage	MA	Medicare Part C - also known as Medicare Advantage - is a program which allows individuals who are eligible for Medicare Parts A and B to elect a private health plan to provide their Medicare coverage. The federal government pays the plan's premiums up to a set level, and individuals are responsible for the difference.

## H.2. Glossary Of Terms

Word	Abbreviation	Definition
Medicare Advantage Special Needs Plan	SNP	A special type of Medicare Advantage plan that is designed to provide targeted coordinated care to individuals who are a) institutionalized; b) dual eligible; and/or c) meet the severe chronic disabled conditions set forth by CMS. Plans emphasize improved care primarily through continuity of care and care coordination.
Medicare Part A		Hospital Insurance: Covers hospital, skilled nursing care, hospice, and home health care for most eligible individuals at no cost. Financed through payroll tax and deductibles, copayments are only charged if a stay becomes long-term.
Medicare Part B		Supplementary Medical Insurance: Covers most outpatient services, and consumers pay a premium based on income level.
Medicare Part C		Medicare Part C - also known as Medicare Advantage - is a program which allows individuals who are eligible for Medicare Parts A and B to elect a private health plan to provide their Medicare coverage. The federal government pays the plan's premiums up to a set level, and individuals are responsible for the difference.
Medicare Part D		Outpatient Prescription Drug Benefit: Private plans contract with Medicare to provide coverage for prescription drugs. Most consumers pay premiums based on their income.
Metropolitan Statistical Area	MSA	An urbanized area with a population of at least 50,000 plus adjacent territory that has a high degree of social and economic integration as measured by commuting ties.
Patient-Centered Medical Home	PCMH	See Medical Home.
Patient Protection & Affordable Care Act	PPACA or ACA	U.S. health care reform signed into law in 2010. The legislation regulates certain aspects of private and public health insurance programs and authorizes an individual mandate to secure essential health coverage, premium tax credits for the purchase of private health insurance, and increased insurance coverage of preexisting conditions. In 2012 the Supreme Court ruled that state participation is optional for provisions of the law expanding Medicaid coverage to adults ages 18 to 64 with incomes under 138% of the FPL. In 2017, Congress repealed the tax penalties associated with the individual mandate essentially ending the mandate.

## H.2. Glossary Of Terms

Word	Abbreviation	Definition
<b>Primary Care Case Management</b>	PCCM	A health care delivery system model with limited utilization and cost control. Under the PCCM model, Medicaid enrollees choose a primary care physician who acts as a gatekeeper for more intensive services. The primary care physician generally receives a per person per month (PMPM) fee for care coordination, and is reimbursed fee-for-service for all medical services provided.
<b>Program Of All Inclusive Care For The Elderly</b>	PACE	PACE serves populations over the age of 55 who are eligible for skilled nursing home care by utilizing a comprehensive delivery system of social, medical, and long-term care services to keep enrollees in the community for as long as possible. PACE is an optional state Medicaid program, and may only be available in certain states, or regions within states.
<b>Serious Mental Illness</b>	SMI	A mental, behavioral, or emotional disorder that lasts for a sufficient duration of time and causes impairment of major life activities. Serious mental illnesses include major depression, schizophrenia, bipolar disorder, obsessive compulsive disorder (OCD), panic disorder, post traumatic stress disorder (PTSD), and borderline personality disorder.
<b>Supported Employment</b>		Provides services and supports to help individuals with disabilities become employed in an integrated or competitive work environment, and retain that employment.
<b>Supported Housing</b>		Housing provided for as long as needed at little or no cost to individuals with mental illness, or other vulnerable populations who are homeless or at-risk for homelessness. Mental health and social services are offered to participants, but are not a condition for participation in the program. The goal is to allow individuals to live as self-sufficient, independent lives as possible.
<b>Value-Based Reimbursement</b>	VBR	Reimbursement model in which payers financially reward or penalize health care provider organizations for performance on quality and cost of care. VBR payment mechanisms include P4P; capitation; shared savings models; shared risk models; and payments based on clinically-defined episodes, called episodes of care or bundled payments.

## H.3. Sources

### A. Executive Summary

1. Information compiled from sources provided throughout the profile.

### B.1. Population Demographics

1. United States Census Bureau. (2020). 2021 American Community Survey 1-Year Estimates S0101 Population By Age and Sex. Retrieved November 2022 from <https://data.census.gov/cedsci/table?q=S0101>
2. United States Census Bureau. (2020). 2021 Current Population Survey Annual Social and Economic Supplement POV-46 Poverty Status By State. Retrieved November 2022 from <https://data.census.gov/cedsci/table?q=S1701>
3. United States Census Bureau. (2020). 2021 American Community Survey 1-Year Estimates S1901 Median Income In the Past 12 Months. Retrieved November 2022 from <https://data.census.gov/cedsci/table?q=S1901>
4. United States Census Bureau. (2020). 2021 Population Distribution by Race/Ethnicity. Retrieved November 2022 from <https://data.census.gov/cedsci/table?q=DP05&tid=ACSDP5Y2020.DP05>

### B.2. Population Centers

1. U.S. Census Bureau. (2020). 2021 TIGER/Line® Shapefiles: Core Based Statistical Areas. Retrieved November 2022 from <https://www.census.gov/cgi-bin/geo/shapefiles/index.php?year=2021&layergroup=Core+Based+Statistical+Areas>
2. U.S. Census Bureau. (2020). 2019 TIGER/Line® Shapefiles: States (and equivalent). Retrieved November 2022 from <https://www.census.gov/cgi-bin/geo/shapefiles/index.php?year=2019&layergroup=States+%28and+equivalent%29>
3. United States Census Bureau. (2020). 2019 Annual Estimates of Residential Population-Metropolitan and Micropolitan Statistical Area GCT-PEPANNRES. Retrieved November 2022 from <https://www.census.gov/data/tables/time-series/demo/popest/2010s-total-metro-and-micro-statistical-areas.html>

### B.3. Population Distribution By Payer: National vs. State

1. OPEN MINDS. (2021). Serious Mental Illness Prevalence Estimates.
2. Tricare, 2020 Beneficiaries. Retried December 2022. <https://www.health.mil/I-Am-A/Media/Media-Center/Patient-Population-Statistics/Patient-Numbers-By-State>
3. CMS, MMCO Statistical & Analytic Reports, Quarterly Release. Retrieved December 2022. <https://www.cms.gov/Medicare-Medicaid-Coordination/Medicare-and-Medicaid-Coordination/Medicare-Medicaid-Coordination-Office/Analytics>
4. Kaiser Family Foundation, Health Coverage & Uninsured, Health Insurance Coverage of the Total Population. Retrieved December 2022. <https://www.kff.org/other/state-indicator/health-insurance-coverage-of-the-total-population-cps/?dataView=1&currentTimeframe=0&sortModel=%7B%22colId%22:%22Location%22,%22sort%22:%22asc%22%7D>

### B.3. SMI Population Distribution By Payer: National vs. State

1. OPEN MINDS. (2021). Serious Mental Illness Prevalence Estimates.

## H.3. Sources

### B.4. Largest State Health Plans By Enrollment

1. OPEN MINDS. (2021, December). Health Plans Database.
2. TRICARE. (2020, June 22). Beneficiaries by Location. Retrieved November 2022 from <https://health.mil/Military-Health-Topics/Access-Cost-Quality-and-Safety/Health-Care-Program-Evaluation/Annual-Evaluation-of-the-TRICARE-Program>
3. Health Plans USA. (2021). Subscription Database. [www.markfarrah.com](http://www.markfarrah.com)

### B.4. Largest State Health Plans By Estimated SMI Enrollment

1. OPEN MINDS. (2021, December). Health Plans Database.
2. TRICARE. (2020, June 22). Beneficiaries by Location. Retrieved November 2022 from <https://health.mil/Military-Health-Topics/Access-Cost-Quality-and-Safety/Health-Care-Program-Evaluation/Annual-Evaluation-of-the-TRICARE-Program>
3. Health Plans USA. (2021). Subscription Database. [www.markfarrah.com](http://www.markfarrah.com)

### B.5. Health Insurance Marketplace

1. The State of New Jersey. NJ Individual Health Coverage Program Carriers for 2022. Retrieved December 2022 from [https://www.state.nj.us/dobi/division\\_insurance/ihcseh/ihccarriers.htm](https://www.state.nj.us/dobi/division_insurance/ihcseh/ihccarriers.htm)
2. The State of New Jersey. NJ Small Group Health Coverage Program Carriers for 2022. Retrieved December 2022 from [https://www.state.nj.us/dobi/division\\_insurance/ihcseh/sehcarriers.htm](https://www.state.nj.us/dobi/division_insurance/ihcseh/sehcarriers.htm)

### B.6. ACOs

1. OPEN MINDS. (2021). ACO Database.

### C.1. Medicaid Governance: Organizational Chart

1. New Jersey Department of Human Services. (2014, August 25). Medicaid State Plan Amendment 13-0025. Retrieved December 2022 from <https://www.medicaid.gov/State-resource-center/Medicaid-State-Plan-Amendments/Downloads/NJ/NJ-13-0025-MM4.pdf>
2. New Jersey Department of Human Services. Divisions and Offices. Retrieved December 2022 from <https://www.state.nj.us/humanservices/divisions/>

### C.1. Medicaid Governance: Key Leadership

1. State of New Jersey Department of Human Services. Meet the Director. Retrieved December 2022 from <https://www.state.nj.us/humanservices/dmahs/staff/director/>
2. State of New Jersey Department of Human Services. (2020). Commissioner. Retrieved December 2022 from <https://www.nj.gov/humanservices/about/staff>
3. State of New Jersey Department of Human Services. (2020, February 5). Medical Assistance Advisory Council Meeting. Retrieved December 2022 from [https://www.state.nj.us/humanservices/dmahs/boards/maac/MAAC\\_Meeting\\_Agenda\\_2-5-20.pdf](https://www.state.nj.us/humanservices/dmahs/boards/maac/MAAC_Meeting_Agenda_2-5-20.pdf)

## H.3. Sources

### C.2. Medicaid Program Spending By Eligibility Group

1. Centers for Medicare and Medicaid Services. (2021, December). MACStats: Medicaid and CHIP Data Book. Retrieved December 2022 from <https://www.macpac.gov/macstats/>
2. Centers for Medicare and Medicaid Services. (2020, December). MACStats: Medicaid and CHIP Data Book. Retrieved December 2022 from <https://www.macpac.gov/macstats/>
3. Kaiser Family Foundation, Medicaid Spending by Enrollment Group. Retrieved December 2022. <https://www.kff.org/medicaid/state-indicator/medicaid-spending-by-enrollment-group/?currentTimeframe=0&selectedRows=%7B%22states%22:%7B%22alabama%22:%7B%7D%7D%7D&sortModel=%7B%22colId%22:%22Location%22,%22sort%22:%22asc%22%7D>

### C.2. Medicaid Program Spending: Budget

1. Centers for Medicare and Medicaid Services. (2021, December). MACStats: Medicaid and CHIP Data Book. Retrieved December 2022 from <https://www.macpac.gov/macstats/>
2. Kaiser Family Foundation. (2020). Federal Medical Assistance Percentages FY 2022. Retrieved December 2022 from <https://www.kff.org/medicaid/state-indicator/federal-matching-rate-and-multiplier/?currentTimeframe=0&sortModel=%7B%22colId%22:%22Location%22,%22sort%22:%22asc%22%7D>
3. Centers for Medicare and Medicaid Services. (2020, December). MACStats: Medicaid and CHIP Data Book. Retrieved December 2022 from <https://www.macpac.gov/macstats/>
4. Kaiser Family Foundation, Medicaid Spending by Enrollment Group. Retrieved December 2022. <https://www.kff.org/medicaid/state-indicator/medicaid-spending-by-enrollment-group/?currentTimeframe=0&selectedRows=%7B%22states%22:%7B%22alabama%22:%7B%7D%7D%7D&sortModel=%7B%22colId%22:%22Location%22,%22sort%22:%22asc%22%7D>

### C.2. Medicaid Program Spending: Change Over Time

1. Centers for Medicare and Medicaid Services. (2021, December). MACStats: Medicaid and CHIP Data Book. Retrieved December 2022 from <https://www.macpac.gov/macstats/>
2. Centers for Medicare and Medicaid Services. (2020, December). MACStats: Medicaid and CHIP Data Book. Retrieved December 2022 from <https://www.macpac.gov/macstats/>
3. Medicaid and CHIP Payment and Access Commission. (2018, December). MACStats: Medicaid and CHIP Data Book. Retrieved December 2022 from <https://www.macpac.gov/wp-content/uploads/2018/12/December-2018-MACStats-Data-Book.pdf>
4. Medicaid and CHIP Payment and Access Commission. (2017, December). MACStats: Medicaid and CHIP Data Book. Retrieved December 2022 from <https://www.macpac.gov/publication/macstats-archive/>
5. Medicaid and CHIP Payment and Access Commission. (2016, December). MACStats: Medicaid and CHIP Data Book. Retrieved December 2022 from <https://www.macpac.gov/publication/macstats-archive/>
6. Medicaid and CHIP Payment and Access Commission. (2015, March). MACStats: Medicaid and CHIP Program Statistics. Retrieved December 2022 from <https://www.macpac.gov/publication/macstats-archive/>

### C.3. Medicaid Expansion Status

1. Centers for Medicare and Medicaid Services. (2021, December). MACStats: Medicaid and CHIP Data Book. Retrieved December 2022 from <https://www.macpac.gov/macstats/>
2. Centers for Medicare and Medicaid Services. (2019, December). MACStats: Medicaid and CHIP Data Book. Retrieved December 2022 from <https://www.macpac.gov/macstats/>
3. Centers for Medicare and Medicaid Services. (2019, November). Medicaid Enrollment Data Collected Through MBES 2018 Q4. Retrieved December 2022 from <https://www.medicare.gov/medicaid/program-information/medicaid-and-chip-enrollment-data/enrollment-mbes/index.html>



## H.3. Sources

### C.3. Medicaid Expansion Status cont.

1. Centers for Medicare and Medicaid Services. (2020). Medicaid, Children's Health Insurance Program & Basic Health Program Eligibility Levels. Retrieved December 2022 from <https://www.medicaid.gov/medicaid/program-information/medicaid-and-chip-eligibility-levels/index.html>
2. US Government Publishing Office. (2011, October 1). Code of Federal Regulations Title 42. Retrieved December 2022 from <https://www.gpo.gov/fdsys/granule/CFR-2011-title42-vol4/CFR-2011-title42-vol4-sec440-315>

### C.4. Medicaid Program Benefits

1. State of New Jersey Department of Human Services. (2020, February 6). Medicaid State Plan Services, Including Scope and Limitation. Retrieved December 2022 from [https://www.state.nj.us/humanservices/dmahs/info/state\\_plan/Attachment3\\_Services\\_including\\_Scope\\_and\\_Limitations.pdf](https://www.state.nj.us/humanservices/dmahs/info/state_plan/Attachment3_Services_including_Scope_and_Limitations.pdf)
2. State of New Jersey Department of Human Service. Medicaid State Plan. Retrieved December 2022 from [https://www.state.nj.us/humanservices/dmahs/info/state\\_plan.html](https://www.state.nj.us/humanservices/dmahs/info/state_plan.html)

### D.1. Medicaid Financing & Service Delivery System

1. New Jersey Division of Medical Assistance & Health Services. (2020). Enrollment Reports. Retrieved December 2022 from <https://www.state.nj.us/humanservices/dmahs/news/reports/index.html>
2. New Jersey Division of Medical Assistance & Health Services. (2020, November). NJ FamilyCare Enrollment Summary. Retrieved December 2022 from [https://www.state.nj.us/humanservices/dmahs/news/reports/enrollment\\_2020\\_11.pdf](https://www.state.nj.us/humanservices/dmahs/news/reports/enrollment_2020_11.pdf)

### D.1. Medicaid Service Delivery System Enrollment By Eligibility Group

1. New Jersey Department of Human Services. (2020, January). Managed Care Contract. Retrieved December 2022 from <https://state.nj.us/humanservices/dmahs/info/resources/care/hmo-contract.pdf>
2. Centers for Medicare & Medicaid Services. (2019, July 25). New Jersey FamilyCare Comprehensive Demonstration. Retrieved December 2022 from <https://www.medicaid.gov/Medicaid-CHIP-Program-Information/By-Topics/Waivers/1115/downloads/nj/nj-1115-request-ca.pdf>
3. New Jersey Department of Human Services. Medicaid State Plan Eligibility. Retrieved December 2022 from [https://www.state.nj.us/humanservices/dmahs/info/state\\_plan/Attachment2\\_Eligibility.pdf](https://www.state.nj.us/humanservices/dmahs/info/state_plan/Attachment2_Eligibility.pdf)
4. NJ FamilyCare. Who is Eligible? Retrieved December 2022 from [http://www.njfamilycare.org/who\\_eligbl.aspx](http://www.njfamilycare.org/who_eligbl.aspx)

### D.2. Medicaid FFS Program: Overview

1. New Jersey Division of Medical Assistance & Health Services. (2020). Enrollment Reports. Retrieved December 2022 from <https://www.state.nj.us/humanservices/dmahs/news/reports/index.html>
2. New Jersey Division of Medical Assistance & Health Services. (2020, November). NJ FamilyCare Enrollment Summary. Retrieved December 2022 from [https://www.state.nj.us/humanservices/dmahs/news/reports/enrollment\\_2020\\_11.pdf](https://www.state.nj.us/humanservices/dmahs/news/reports/enrollment_2020_11.pdf)

## H.3. Sources

### D.2. Medicaid FFS Program: Behavioral Health Benefits

1. New Jersey Department of Human Services. Mental Health and Substance Use Disorder Service Benefit Plan. Retrieved December 2022 from [https://www.state.nj.us/humanservices/dmahs/news/Volume\\_28\\_Number\\_04\\_Att\\_MCO.pdf](https://www.state.nj.us/humanservices/dmahs/news/Volume_28_Number_04_Att_MCO.pdf)
2. New Jersey Department of Human Services. (2019, March 14). Update From the NJ Department of Human Services. Retrieved December 2022 from <http://www.njha.com/media/551178/EDU-1908-PPT-DHS.pdf>
3. New Jersey Division of Mental Health & Addiction Services. (2020, December). Mental Health Fee-for-service Program Provider Manual. Retrieved December 2022 from [https://dmhas.dhs.state.nj.us/NJMHAPP/Content/Documents/NJMHAPP\\_Provider\\_Program\\_Manual.pdf](https://dmhas.dhs.state.nj.us/NJMHAPP/Content/Documents/NJMHAPP_Provider_Program_Manual.pdf)
4. Centers for Medicare & Medicaid Services. (2019, July 25). New Jersey FamilyCare Comprehensive Demonstration. Retrieved December 2022 from <https://www.medicaid.gov/Medicaid-CHIP-Program-Information/By-Topics/Waivers/1115/downloads/nj/nj-1115-request-ca.pdf>
5. Rutgers University Behavioral Health Care. (2019). UBHC Services. Retrieved December 2022 from <https://ubhc.rutgers.edu/services/adult/index.html>
6. New Jersey Department of Human Services. (2020, April 1). Provision of ABA Services. Retrieved December 2022 from [https://www.state.nj.us/humanservices/dmahs/news/Provider\\_Newsletter\\_for\\_Applied\\_Behavior\\_Analysis\\_Therapy.pdf](https://www.state.nj.us/humanservices/dmahs/news/Provider_Newsletter_for_Applied_Behavior_Analysis_Therapy.pdf)
7. New Jersey Department of Human Services. (2019, December 11). State Plan Amendment NJ 19-0015. Retrieved December 2022 from <https://www.medicaid.gov/State-resource-center/Medicaid-State-Plan-Amendments/Downloads/NJ/NJ-19-0015.pdf>
8. New Jersey Department of Human Services. (2019, November 19). State Plan Amendment NJ 19-0004. Retrieved December 2022 from <https://www.medicaid.gov/sites/default/files/State-resource-center/Medicaid-State-Plan-Amendments/Downloads/NJ/NJ-19-0004.pdf>
9. OPEN MINDS. (2020, May 6). New Jersey Medicaid Now Reimburses for Applied Behavior Analysis. Retrieved December 2022 from <https://www.openminds.com/market-intelligence/news/new-jersey-medicaid-now-reimburses-for-applied-behavior-analysis>

### D.2. Medicaid FFS Program: SMI Population

1. Centers for Medicare & Medicaid Services. (2019, July 25). New Jersey FamilyCare Comprehensive Demonstration. Retrieved December 2022 from <https://www.medicaid.gov/Medicaid-CHIP-Program-Information/By-Topics/Waivers/1115/downloads/nj/nj-1115-request-ca.pdf>
2. OPEN MINDS. (2021). SMI Estimates.

### D.2. Medicaid FFS Program: Pharmacy Benefits

1. New Jersey Administrative Code. N.J.A.C. 10:51-1.25 Point-of-sale Pharmacy. Retrieved December 2022 from [https://www.state.nj.us/humanservices/providers/rulefees/regs/NJAC%2010\\_51%20Pharmaceutical%20Services%20Manual.pdf](https://www.state.nj.us/humanservices/providers/rulefees/regs/NJAC%2010_51%20Pharmaceutical%20Services%20Manual.pdf)
2. New Jersey Administrative Code. N.J.A.C. 10:51-1.26 Prospective Drug Utilization Review (PDUR) Program. Retrieved December 2022 from <https://casetext.com/regulation/new-jersey-administrative-code/title-10-human-services/chapter-51-pharmaceutical-services-manual/subchapter-1-pharmaceutical-services/section-1051-126-prospective-drug-utilization-review-pdur-program>
3. Centers for Medicare & Medicaid Services. (2018, October). Medicaid Drug Utilization Review State Comparison/Summary Report FFY 2017 Annual Report. Retrieved December 2022 from <https://www.medicaid.gov/medicaid/prescription-drugs/downloads/drug-utilization-review/2017-dur-summary-report.pdf>



## H.3. Sources

### D.3. Medicaid Managed Care Program: Overview

1. New Jersey Department of Human Services. (2020, January). Managed Care Contract. Retrieved December 2022 from <https://state.nj.us/humanservices/dmahs/info/resources/care/hmo-contract.pdf>
2. Centers for Medicare & Medicaid Services. (2019, July 25). New Jersey FamilyCare Comprehensive Demonstration. Retrieved December 2022 from <https://www.medicaid.gov/Medicaid-CHIP-Program-Information/By-Topics/Waivers/1115/downloads/nj/nj-1115-request-ca.pdf>
3. New Jersey Department of Human Services. NJ FamilyCare Health Plans. Retrieved December 2022 from <https://www.state.nj.us/humanservices/dmahs/clients/medicaid/hmo/index.html>

### D.3. Medicaid Managed Care Program: Performance-Based Incentive Program Measures

1. Centers for Medicare & Medicaid Services. (2019, July 25). New Jersey FamilyCare Comprehensive Demonstration. Retrieved December 2022 from <https://www.medicaid.gov/Medicaid-CHIP-Program-Information/By-Topics/Waivers/1115/downloads/nj/nj-1115-request-ca.pdf>
2. New Jersey Department of Human Services. (2020, January). Managed Care Contract. Retrieved November 2021 from <https://state.nj.us/humanservices/dmahs/info/resources/care/hmo-contract.pdf>

### D.3. Medicaid Managed Care Program: Health Plan Characteristics

1. Aetna Better Health of New Jersey. (2020). 2021 Provider Manual. Retrieved December 2022 from [https://www.aetnabetterhealth.com/newjersey/assets/pdf/providers/2021%20NJ%20Provider%20Manual\\_1\\_2021.pdf](https://www.aetnabetterhealth.com/newjersey/assets/pdf/providers/2021%20NJ%20Provider%20Manual_1_2021.pdf)
2. Amerigroup Community Care. (2020, May). Member Handbook. Retrieved December 2022 from [https://providers.amerigroup.com/ProviderDocuments/NJNJ\\_Provider\\_Manual.pdf](https://providers.amerigroup.com/ProviderDocuments/NJNJ_Provider_Manual.pdf)
3. Horizon NJ Health. (2020). 2020 Member Handbook. Retrieved December 2022 from [https://www.horizonnjhealth.com/securecms-documents/691/Medicaid\\_Member\\_Handbook\\_English.pdf](https://www.horizonnjhealth.com/securecms-documents/691/Medicaid_Member_Handbook_English.pdf)
4. UnitedHealthcare Community Plan. (2020). Member Handbook. Retrieved December 2022 from <https://www.uhccommunityplan.com/content/dam/uhccp/plandocuments/handbook/en/NJ-MemberHandbook-En.pdf>
5. New Jersey Department of Human Services. NJ FamilyCare Health Plans. Retrieved December 2022 from <https://www.state.nj.us/humanservices/dmahs/clients/medicaid/hmo/index.html>

### D.3. Medicaid Managed Care Program: Behavioral Health Overview

1. New Jersey Department of Human Services. (2019, March 14). Update From the NJ Department of Human Services. Retrieved December 2022 from <http://www.njha.com/media/551178/EDU-1908-PPT-DHS.pdf>
2. New Jersey Department of Human Services. Expanded Behavioral Health Benefits. Retrieved December 2022 from <https://www.state.nj.us/humanservices/dmahs/news/ebhb.html>
3. New Jersey Department of Human Services. (2020, January). Managed Care Contract. Retrieved December 2022 from <https://state.nj.us/humanservices/dmahs/info/resources/care/hmo-contract.pdf>
4. Rutgers University Behavioral Health Care. (2019). UBHC Services. Retrieved December 2022 from <https://ubhc.rutgers.edu/services/adult/index.html>
5. New Jersey Department of Human Services, Mental Health FFS Program Provider Manual. Retrieved December 2022 from [https://dmhas.dhs.state.nj.us/NJMHAPP/Content/Documents/NJMHAPP\\_Provider\\_Program\\_Manual.pdf](https://dmhas.dhs.state.nj.us/NJMHAPP/Content/Documents/NJMHAPP_Provider_Program_Manual.pdf)

## H.3. Sources

### D.3. Medicaid Managed Care Program: MLTSS Population Behavioral Health Benefits

1. New Jersey Department of Human Services. Mental Health and Substance Use Disorder Service Benefit Plan. Retrieved December 2022 from [https://www.state.nj.us/humanservices/dmahs/news/Volume\\_28\\_Number\\_04\\_Att\\_MCO.pdf](https://www.state.nj.us/humanservices/dmahs/news/Volume_28_Number_04_Att_MCO.pdf)
2. New Jersey Department of Human Services. (2019, May 24). NJ FamilyCare Peer Recovery Support Services for Substance Use Disorder. Retrieved December 2022 from [https://www.nj.gov/humanservices/dmhas/information/provider/Provider\\_Meetings/2019/Peer%20Recovery%20Services.pdf](https://www.nj.gov/humanservices/dmhas/information/provider/Provider_Meetings/2019/Peer%20Recovery%20Services.pdf)
3. New Jersey Department of Human Services. (2019, March 14). Update From the NJ Department of Human Services. Retrieved December 2022 from <http://www.njha.com/media/551178/EDU-1908-PPT-DHS.pdf>
4. New Jersey Department of Human Services. (2020, January). Managed Care Contract. Retrieved December 2022 from <https://state.nj.us/humanservices/dmahs/info/resources/care/hmo-contract.pdf>

### D.3. Medicaid Managed Care Program: Non-MLTSS Population Behavioral Health Benefits

1. New Jersey Department of Human Services. Mental Health and Substance Use Disorder Service Benefit Plan. Retrieved December 2022 from [https://www.state.nj.us/humanservices/dmahs/news/Volume\\_28\\_Number\\_04\\_Att\\_MCO.pdf](https://www.state.nj.us/humanservices/dmahs/news/Volume_28_Number_04_Att_MCO.pdf)
2. New Jersey Department of Human Services. NJ FamilyCare Health Plans. Retrieved December 2022 from <https://www.state.nj.us/humanservices/dmahs/clients/medicaid/hmo/index.html>
3. Rutgers University Behavioral Health Care. (2019). UBHC Services. Retrieved December 2022 from <https://ubhc.rutgers.edu/services/adult/index.html>

### D.3. Medicaid Managed Care Program: SMI Population

1. Centers for Medicare & Medicaid Services. (2019, July 25). New Jersey FamilyCare Comprehensive Demonstration. Retrieved December 2022 from <https://www.medicaid.gov/Medicaid-CHIP-Program-Information/By-Topics/Waivers/1115/downloads/nj/nj-1115-request-ca.pdf>
2. OPEN MINDS. (2021). SMI Estimates.

### D.3. Medicaid Managed Care Program: Pharmacy Benefits

1. UnitedHealthcare Community Plan. (2021). Pharmacy Resources and Physician Administered Drugs. Retrieved December 2022 from <https://www.uhcprovider.com/en/health-plans-by-state/new-jersey-health-plans/nj-comm-plan-home/nj-cp-pharmacy.html>
2. Aetna Better Health of New Jersey. (2021). Pharmacy Benefits. Retrieved December 2022 from <https://www.aetnabetterhealth.com/newjersey/members/benefits/pharmacy>
3. Horizon NJ Health. (2020). 2020 Member Handbook. Retrieved December 2022 from [https://www.horizonnjhealth.com/securecms-documents/691/Medicaid\\_Member\\_Handbook\\_2020.pdf](https://www.horizonnjhealth.com/securecms-documents/691/Medicaid_Member_Handbook_2020.pdf)
4. WellCare. (2020, December 4). NJ FamilyCare Pharmacy Services. Retrieved December 2022 from <https://www.wellcare.com/New-Jersey/Members/Medicaid-Plans/NJ-FamilyCare/Pharmacy-Services>
5. Optum. (2020). Pharmacy Manual. Retrieved December 2022 from <https://professionals.optumrx.com/content/dam/optum3/professional-optumrx/resources/pdfs/OptumRxPharmacyProviderManual2021-Version3.3.pdf>

## H.3. Sources

### D.4. Medicaid Program: Care Coordination Initiatives

1. New Jersey Department of Human Services. (2020, January). Managed Care Contract. Retrieved December 2022 from <https://state.nj.us/humanservices/dmahs/info/resources/care/hmo-contract.pdf>
2. New Jersey Department of Human Services. (2016, May 12). Medicaid State Plan Amendment 16-0001. Retrieved December 2022 from <https://www.medicaid.gov/State-resource-center/Medicaid-State-Plan-Amendments/Downloads/NJ/NJ-16-0001.pdf>
3. Trenton Health Team. (2019). NJ RHH/Medicaid ACO Demonstration Project. Retrieved December 2022 from <https://trentonhealthteam.org/what-we-do/nj-medicaid-aco-demonstration-project/>
4. National Council for Behavioral Health. (2019, June 20). House Passes Funding Extension for CCBHC Demonstration. Retrieved December 2022 from <https://www.thenationalcouncil.org/capitol-connector/2019/06/house-passes-funding-extension-for-ccbhc-demonstration/>
5. Healthcare Innovation. (2020, January 21). NJ Legislation Creates Four Regional Health Hubs. Retrieved December 2022 from <https://www.hcinnovationgroup.com/interoperability-hie/health-information-exchange-hie/news/21122244/nj-legislation-creates-four-regional-health-hubs>

### D.4. Medicaid Program: Regional Health Hubs

1. New Jersey State Legislator. (2011). Chapter 114 Medicaid Accountable Care Organization Demonstration Project. Retrieved November 2021 from [https://www.njleg.state.nj.us/2010/Bills/PL11/114\\_.pdf](https://www.njleg.state.nj.us/2010/Bills/PL11/114_.pdf)
2. Camden Coalition of Healthcare Providers (2019, May 30). Regional Health Hubs: A Way Forward in Care Coordination for New Jersey. Retrieved December 2022 from <https://www.camdenhealth.org/regional-health-hubs-a-way-forward-in-care-coordination-for-new-jersey/>
3. Trenton Health Team. (2019). NJ RHH/Medicaid ACO Demonstration Project. Retrieved December 2022 from <https://trentonhealthteam.org/what-we-do/nj-medicaid-aco-demonstration-project/>
4. Rutgers Center for State Health Policy, (2018, November). Update on ACO Operations and Care Management Strategies in the New Jersey Medicaid ACO Demonstration Project. Retrieved December 2022 from <http://www.cshp.rutgers.edu/Downloads/11400.pdf>
5. New Jersey Department of Human Services. Accountable Care Organization. Retrieved December 2022 from <http://www.nj.gov/humanservices/dmahs/info/aco.html>
6. Healthcare Innovation. (2020, January 21). NJ Legislation Creates Four Regional Health Hubs. Retrieved December 2022 from <https://www.hcinnovationgroup.com/interoperability-hie/health-information-exchange-hie/news/21122244/nj-legislation-creates-four-regional-health-hubs>
7. OPEN MINDS. (2020, May 4). New Jersey Creates Regional Health Hubs to Replace Medicaid Accountable Care Organizations. Retrieved December 2022 from <https://www.openminds.com/market-intelligence/news/new-jersey-creates-regional-health-hubs-to-replace-medicaid-accountable-care-organizations/>

### D.4. State Medicaid Health Home Characteristics

1. New Jersey Department of Human Services. (2016, May 12). Medicaid State Plan Amendment 16-0001. Retrieved December 2022 from <https://www.medicaid.gov/State-resource-center/Medicaid-State-Plan-Amendments/Downloads/NJ/NJ-16-0001.pdf>
2. New Jersey Department of Human Services. (2015, March 12). Medicaid State Plan Amendment 14-0005. Retrieved December 2022 from <https://www.medicaid.gov/State-resource-center/Medicaid-State-Plan-Amendments/Downloads/NJ/NJ-14-0005.pdf>
3. New Jersey Department of Human Services. Health Homes. Retrieved December 2022 from <https://www.state.nj.us/humanservices/dmhas/initiatives/integration/hh.html>
4. New Jersey Department of Human Services. (2015, August 12). Medicaid State Plan Amendment 14-0014. Retrieved December 2022 from <https://www.medicaid.gov/State-resource-center/Medicaid-State-Plan-Amendments/Downloads/NJ/NJ-14-0014.pdf>
5. Centers for Medicare & Medicaid Services. (2020, December). State-by-State Health Home State Plan Amendment Matrix. Retrieved December 2022 from <https://www.medicaid.gov/state-resource-center/medicaid-state-technical-assistance/health-home-information-resource-center/downloads/state-hh-spa-at-a-glance-matrix.pdf>

## H.3. Sources

### D.4. State Medicaid Health Home Service Areas

1. New Jersey Department of Human Services. (2016, May 12). Medicaid State Plan Amendment 16-0001. Retrieved December 2022 from <https://www.medicaid.gov/State-resource-center/Medicaid-State-Plan-Amendments/Downloads/NJ/NJ-16-0001.pdf>
2. New Jersey Department of Human Services. (2015, March 12). Medicaid State Plan Amendment 14-0005. Retrieved December 2022 from <https://www.medicaid.gov/State-resource-center/Medicaid-State-Plan-Amendments/Downloads/NJ/NJ-14-0005.pdf>
3. New Jersey Department of Human Services, Health Homes. Retrieved December 2022. <https://www.state.nj.us/humanservices/dmhas/initiatives/integration/hh.html>

### D.4. Medicaid Program: CCBHCs

1. New Jersey Department of Human Services. (2017). Certified Community Behavioral Health Clinics (CCBHCs) Demonstration Program. Retrieved December 2022 from <https://www.nj.gov/humanservices/dmhas/initiatives/integration/Overview%20for%20CCBHC.pdf>
2. New Jersey Department of Human Service. Certified Community Behavioral Health Clinics. Retrieved December 2022 from <https://www.nj.gov/humanservices/dmhas/initiatives/integration/ccbh.html>
3. Substance Abuse and Mental Health. (2018, August 10). Certified Community Behavioral Health Clinics Demonstration Program Report to Congress 2017. Retrieved December 2022 from [https://www.samhsa.gov/sites/default/files/ccbh\\_clinicdemonstrationprogram\\_081018.pdf](https://www.samhsa.gov/sites/default/files/ccbh_clinicdemonstrationprogram_081018.pdf)
4. National Council for Behavioral Health. (2019, March 8). Push to Expand Certified Community Behavioral Health Clinics Continues. Retrieved December 2022 from <https://www.thenationalcouncil.org/capitol-connector/2019/03/push-to-expand-certified-community-behavioral-health-clinics-continues/>
5. National Council for Behavioral Health. (2019, June 20). House Passes Funding Extension for CCBHC Demonstration. Retrieved December 2022 from <https://www.thenationalcouncil.org/capitol-connector/2019/06/house-passes-funding-extension-for-ccbhc-demonstration/>

### D.4. Medicaid Program: CCBHC Service Areas

1. New Jersey Department of Human Service. Certified Community Behavioral Health Clinics. Retrieved December 2022 from <https://www.nj.gov/humanservices/dmhas/initiatives/integration/ccbh.html>
2. National Council for Behavioral Health, CCBHS Success Center. Retrieved December 2022. <https://www.thenationalcouncil.org/ccbh-success-center/ccbh-locator/>

### D.4. Medicaid Program: MATrx

1. New Jersey Department of Human Services. (2019, January 16). NJ MATrx Model. Retrieved December 2022 from [https://www.nj.gov/humanservices/dmhas/information/provider/Provider\\_Meetings/2019/MAAC%20OBAT.pdf](https://www.nj.gov/humanservices/dmhas/information/provider/Provider_Meetings/2019/MAAC%20OBAT.pdf)
2. New Jersey Department of Human Services. (2019, January 16). Department of Human Services Budget Listening Session. Retrieved December 2022 from [https://www.state.nj.us/humanservices/dmahs/boards/maac/MAAC\\_Meeting\\_Presentations\\_1\\_16\\_19.pdf](https://www.state.nj.us/humanservices/dmahs/boards/maac/MAAC_Meeting_Presentations_1_16_19.pdf)
3. New Jersey Department of Human Services. (2019, April 25). Strengthening Medicaid: Alignment & Redesign Through Integration. Retrieved December 2022 from [https://www.state.nj.us/humanservices/dmahs/boards/maac/MAAC\\_Meeting\\_Presentations\\_4\\_25\\_19.pdf](https://www.state.nj.us/humanservices/dmahs/boards/maac/MAAC_Meeting_Presentations_4_25_19.pdf)

## H.3. Sources

### D.6. Medicaid Program New Initiatives: MATrx Services

1. New Jersey Department of Human Services. (2019, January 16). NJ MATrx Model. Retrieved December 2022 from [https://www.nj.gov/humanservices/dmhas/information/provider/Provider\\_Meetings/2019/MAAC%20OBAT.pdf](https://www.nj.gov/humanservices/dmhas/information/provider/Provider_Meetings/2019/MAAC%20OBAT.pdf)

### D.5. Medicaid Program: Demonstration & Care Management Waivers

1. Centers for Medicare & Medicaid Services. (2019, July 25). New Jersey FamilyCare Comprehensive Demonstration. Retrieved December 2022 from <https://www.medicaid.gov/Medicaid-CHIP-Program-Information/By-Topics/Waivers/1115/downloads/nj/nj-1115-request-ca.pdf>
2. New Jersey Department of Human Services. (2019, May 24). NJ FamilyCare Peer Recovery Support Services for Substance Use Disorder. Retrieved December 2022 from [https://www.nj.gov/humanservices/dmhas/information/provider/Provider\\_Meetings/2019/Peer%20Recovery%20Services.pdf](https://www.nj.gov/humanservices/dmhas/information/provider/Provider_Meetings/2019/Peer%20Recovery%20Services.pdf)

### D.5. Medicaid Program Section 1915 (c) HCBS Waivers

1. Centers for Medicare & Medicaid Services. Demonstrations and Waivers. Retrieved December 2022 from [https://www.medicaid.gov/medicaid-chip-program-information/by-topics/waivers/waivers\\_faceted.html](https://www.medicaid.gov/medicaid-chip-program-information/by-topics/waivers/waivers_faceted.html)

### D.6. Medicaid Program Initiatives: Timeline

1. Information compiled from sources provided throughout Section D.

### E.1. Dual Eligible Medicaid Financing & Service Delivery System

1. Centers for Medicare and Medicaid Services. (2019, December). Plan Directory for MA, Cost, PACE, and Demo Organizations. Retrieved December 2022 from <https://www.cms.gov/Research-Statistics-Data-and-Systems/Statistics-Trends-and-Reports/MCRAdvPartDENrolData/MA-Plan-Directory.html>
2. Centers for Medicare and Medicaid Services. (2019, December). Special Needs Plan (SNP) Data. Retrieved December 2022 from <https://www.cms.gov/Research-Statistics-Data-and-Systems/Statistics-Trends-and-Reports/MCRAdvPartDENrolData/Special-Needs-Plan-SNP-Data.html>

### E.2. Largest Dual Eligible Health Plans By Estimated SMI Enrollment

1. Centers for Medicare and Medicaid Services. (2021, December). Plan Directory for MA, Cost, PACE, and Demo Organizations. Retrieved December 2022 from <https://www.cms.gov/Research-Statistics-Data-and-Systems/Statistics-Trends-and-Reports/MCRAdvPartDENrolData/MA-Plan-Directory.html>
2. Centers for Medicare and Medicaid Services. (2019, December). Special Needs Plan (SNP) Data. Retrieved December 2022 from <https://www.cms.gov/Research-Statistics-Data-and-Systems/Statistics-Trends-and-Reports/MCRAdvPartDENrolData/Special-Needs-Plan-SNP-Data.html>



## H.3. Sources

### E.3. Dual Eligible Medicaid Financing & Delivery System: Overview

1. Centers for Medicare and Medicaid Services. (2018, December). Medicare-Medicaid Enrollee State and County Enrollment Snapshots. Retrieved December 2022 from <https://www.cms.gov/Medicare-Medicaid-Coordination/Medicare-and-Medicaid-Coordination/Medicare-Medicaid-Coordination-Office/Analytics.html>

### E.4. Dual Eligible Medicaid Financing & Delivery System: New Initiatives

1. New Jersey Department of Human Services. (2020, January). Managed Care Contract. Retrieved December 2022 from <https://state.nj.us/humanservices/dmahs/info/resources/care/hmo-contract.pdf>
2. Centers for Medicare & Medicaid Services. (2020, March 30). New Jersey FamilyCare Comprehensive Demonstration. Retrieved December 2022 from <https://www.medicaid.gov/Medicaid-CHIP-Program-Information/By-Topics/Waivers/1115/downloads/nj/nj-1115-request-ca.pdf>

### F.1 LTSS Financing & Service Delivery System

1. OPEN MINDS. (2016, December 20). State Medicaid Programs With MLTSS: The 2016 OPEN MINDS Update. Retrieved December 2022 from <https://www.openminds.com/intelligence-report/state-medicaid-programs-mltss-2016-open-minds-update/>
- OPEN MINDS. (2017, October 19). State Medicaid Programs With MLTSS: The 2017 OPEN MINDS Update. Retrieved December 2022 from <https://www.openminds.com/intelligence-report/state-medicaid-programs-mltss-2017-open-minds-update/>
2. OPEN MINDS. (2019, April 5). State Medicaid Programs With MLTSS: The 2019 OPEN MINDS Update. Retrieved December 2022 from <https://www.openminds.com/intelligence-report/state-medicaid-programs-with-mltss-the-2019-open-minds-update/>
3. OPEN MINDS. (2020, May 1). Medicaid Managed Long-Term Services & Supports: The 2020 OPEN MINDS Update. Retrieved December 2022 from <https://www.openminds.com/intelligence-report/medicaid-managed-long-term-services-supports-the-2020-open-minds-update/>
4. Kaiser Family Foundation. (2019, October 18). A View From The States: Key Medicaid Policy Changes: Results From A 50-State Medicaid Budget Survey For State Fiscal Years 2019 & 2020. Retrieved December 2022 from <https://www.kff.org/report-section/a-view-from-the-states-key-medicaid-policy-changes-long-term-services-and-supports/>
5. Mathematica Policy Research. (2019, January). Managed Long-Term Services & Supports Design Supplement : Final Outcomes Evaluation. Retrieved December 2022 from <https://www.medicaid.gov/medicaid/downloads/final-eval-dsgn-mltss.pdf>
6. Centers for Medicare & Medicaid Services. (2012, July). The Growth Of Managed Long-Term Services & Supports (MLTSS) Programs: A 2012 Update. Retrieved December 2022 from [https://www.medicaid.gov/medicaid/downloads/mltssp\\_white\\_paper\\_combined.pdf](https://www.medicaid.gov/medicaid/downloads/mltssp_white_paper_combined.pdf)
7. Ballotpedia. (2012). Historical Medicaid Statistics For All 50 States. Retrieved December 2022 from [https://ballotpedia.org/Historical\\_Medicaid\\_statistics\\_for\\_all\\_50\\_states](https://ballotpedia.org/Historical_Medicaid_statistics_for_all_50_states)

### F.1 Medicaid LTSS Service Delivery System Enrollment By Eligibility Group

1. New Jersey Department of Human Services. (2020, January). Managed Care Contract. Retrieved December 2022 from <https://state.nj.us/humanservices/dmahs/info/resources/care/hmo-contract.pdf>
2. Centers for Medicare & Medicaid Services. (2019, July 25). New Jersey FamilyCare Comprehensive Demonstration. Retrieved December 2022 from <https://www.medicaid.gov/Medicaid-CHIP-Program-Information/By-Topics/Waivers/1115/downloads/nj/nj-1115-request-ca.pdf>
3. New Jersey Department of Human Services. Medicaid State Plan Eligibility. Retrieved December 2022 from [https://www.state.nj.us/humanservices/dmahs/info/state\\_plan/Attachment2\\_Eligibility.pdf](https://www.state.nj.us/humanservices/dmahs/info/state_plan/Attachment2_Eligibility.pdf)
4. NJ FamilyCare. Who is Eligible? Retrieved December 2022 from [http://www.njfamilycare.org/who\\_eligbl.aspx](http://www.njfamilycare.org/who_eligbl.aspx)

## H.3. Sources

### F.2. LTSS Medicaid Financing & Delivery System: Overview

1. OPEN MINDS. (2016, December 20). State Medicaid Programs With MLTSS: The 2016 OPEN MINDS Update. Retrieved December 2022 from <https://www.openminds.com/intelligence-report/state-medicaid-programs-mltss-2016-open-minds-update/>
2. OPEN MINDS. (2017, October 19). State Medicaid Programs With MLTSS: The 2017 OPEN MINDS Update. Retrieved December 2022 from <https://www.openminds.com/intelligence-report/state-medicaid-programs-mltss-2017-open-minds-update/>
3. OPEN MINDS. (2019, April 5). State Medicaid Programs With MLTSS: The 2019 OPEN MINDS Update. Retrieved December 2022 from <https://www.openminds.com/intelligence-report/state-medicaid-programs-with-mltss-the-2019-open-minds-update/>
4. OPEN MINDS. (2020, May 1). Medicaid Managed Long-Term Services & Supports: The 2020 OPEN MINDS Update. Retrieved December 2022 from <https://www.openminds.com/intelligence-report/medicaid-managed-long-term-services-supports-the-2020-open-minds-update/>
5. Kaiser Family Foundation. (2019, October 18). A View From The States: Key Medicaid Policy Changes: Results From A 50-State Medicaid Budget Survey For State Fiscal Years 2019 & 2020. Retrieved December 2021 from <https://www.kff.org/report-section/a-view-from-the-states-key-medicaid-policy-changes-long-term-services-and-supports/>
6. Mathematica Policy Research. (2019, January). Managed Long-Term Services & Supports Design Supplement : Final Outcomes Evaluation. Retrieved December 2022 from <https://www.medicaid.gov/medicaid/downloads/final-eval-dsgn-mltss.pdf>
7. Centers for Medicare & Medicaid Services. (2012, July). The Growth Of Managed Long-Term Services & Supports (MLTSS) Programs: A 2012 Update. Retrieved December 2022 from [https://www.medicaid.gov/medicaid/downloads/mltssp\\_white\\_paper\\_combined.pdf](https://www.medicaid.gov/medicaid/downloads/mltssp_white_paper_combined.pdf)
8. Ballotpedia. (2012). Historical Medicaid Statistics For All 50 States. Retrieved December 2022 from [https://ballotpedia.org/Historical\\_Medicaid\\_statistics\\_for\\_all\\_50\\_states](https://ballotpedia.org/Historical_Medicaid_statistics_for_all_50_states)

### F.3. Medicaid LTSS Program: Health Plan Characteristics

1. Aetna Better Health of New Jersey. (2020). 2021 Provider Manual. Retrieved December 2022 from [https://www.aetnabetterhealth.com/content/dam/aetna/medicaid/newjersey/pdf/2021%20NJ%20Provider%20Manual%201\\_25\\_2021\\_Availability%20Updates.pdf](https://www.aetnabetterhealth.com/content/dam/aetna/medicaid/newjersey/pdf/2021%20NJ%20Provider%20Manual%201_25_2021_Availability%20Updates.pdf)
2. Amerigroup Community Care. (2020, May). Member Handbook. Retrieved December 2022 from [https://providers.amerigroup.com/ProviderDocuments/NJNJ\\_Provider\\_Manual.pdf](https://providers.amerigroup.com/ProviderDocuments/NJNJ_Provider_Manual.pdf)
3. Horizon NJ Health. (2020). 2020 Member Handbook. Retrieved December 2022 from [https://www.horizonnjhealth.com/securecms-documents/691/Medicaid\\_Member\\_Handbook\\_English.pdf](https://www.horizonnjhealth.com/securecms-documents/691/Medicaid_Member_Handbook_English.pdf)
4. UnitedHealthcare Community Plan. (2020). Member Handbook. Retrieved December 2022 from <https://www.uhccommunityplan.com/content/dam/uhccp/plandocuments/handbook/en/NJ-MemberHandbook-En.pdf>
5. New Jersey Department of Human Services. NJ FamilyCare Health Plans. Retrieved December 2022 from <https://www.state.nj.us/humanservices/dmahs/clients/medicaid/hmo/index.html>

### F.4. MLTSS Program Benefits

1. New Jersey Department of Human Services. Mental Health and Substance Use Disorder Service Benefit Plan. Retrieved December 2022 from [https://www.state.nj.us/humanservices/dmahs/news/Volume\\_28\\_Number\\_04\\_Att\\_MCO.pdf](https://www.state.nj.us/humanservices/dmahs/news/Volume_28_Number_04_Att_MCO.pdf)
2. New Jersey Department of Human Services. (2019, March 14). Update From the NJ Department of Human Services. Retrieved December 2022 from <http://www.njha.com/media/551178/EDU-1908-PPT-DHS.pdf>
3. New Jersey Division of Mental Health & Addiction Services. (2019, July). Mental Health Fee-for-service Program Provider Manual. Retrieved December 2022 from [https://dmhas.dhs.state.nj.us/NJMHAPP/Content/Documents/NJMHAPP\\_Provider\\_Program\\_Manual.pdf](https://dmhas.dhs.state.nj.us/NJMHAPP/Content/Documents/NJMHAPP_Provider_Program_Manual.pdf)
4. Centers for Medicare & Medicaid Services. (2019, July 25). New Jersey FamilyCare Comprehensive Demonstration. Retrieved December 2022 from <https://www.medicaid.gov/Medicaid-CHIP-Program-Information/By-Topics/Waivers/1115/downloads/nj/nj-1115-request-ca.pdf>
5. Rutgers University Behavioral Health Care. (2018, December). UBHC Services. Retrieved December 2022 from <https://ubhc.rutgers.edu/services/adult/index.html>
6. State of New Jersey. (2020, April 1). Newsletter. Retrieved December 2022 from [https://www.state.nj.us/humanservices/dmahs/news/Provider\\_Newsletter\\_for\\_Applied\\_Behavior\\_Analysis\\_Therapy.pdf](https://www.state.nj.us/humanservices/dmahs/news/Provider_Newsletter_for_Applied_Behavior_Analysis_Therapy.pdf)
7. State of New Jersey. (2019, December 11). State Plan Amendment 19-0015. Retrieved December 2022 from <https://www.medicaid.gov/State-resource-center/Medicaid-State-Plan-Amendments/Downloads/NJ/NJ-19-0015.pdf>
8. State of New Jersey. (2019, November 19). State Plan Amendment 19-0004 Retrieved December 2022 from <https://www.medicaid.gov/sites/default/files/State-resource-center/Medicaid-State-Plan-Amendments/Downloads/NJ/NJ-19-0004.pdf>
9. OPEN MINDS. (2020, May 6). New Jersey Medicaid Now Reimburses for Applied Behavioral Analysis. Retrieved December 2022 from <https://www.openminds.com/market-intelligence/news/new-jersey-medicaid-now-reimburses-for-applied-behavior-analysis/>

## H.3. Sources

### G.1. Department Of Mental Health & Addiction System Governance: Organization Chart

1. New Jersey Department of Human Services. (2017, March), Division of Mental Health and Addiction Services Organization Chart. Retrieved December 2022 from [http://www.nj.gov/humanservices/dmhas/home/assistant/DMHAS\\_March%202017\\_final\\_update.pdf](http://www.nj.gov/humanservices/dmhas/home/assistant/DMHAS_March%202017_final_update.pdf)

### G.1. Department Of Mental Health & Addiction Governance: Key Leadership

1. New Jersey Department of Human Services. (2020). Commissioner. Retrieved December 2022 from <https://www.nj.gov/humanservices/about/staff/>
2. New Jersey Department of Human Services. (2020). Assistant Commissioner. Retrieved December 2022 from <https://www.nj.gov/humanservices/dmhas/home/assistant/>
3. New Jersey Department of Human Services. (2017, March), Division of Mental Health and Addiction Services Organization Chart. Retrieved November 2021 from [http://www.nj.gov/humanservices/dmhas/home/assistant/DMHAS\\_March%202017\\_final\\_update.pdf](http://www.nj.gov/humanservices/dmhas/home/assistant/DMHAS_March%202017_final_update.pdf)

### G.2. Department Of Mental Health & Addiction: Budget

1. New Jersey Treasury. (2021, March). The Governor's FY 2022 Budget Detailed Budget. Retrieved December 2022 from [www.nj.gov/treasury/omb/publications/22budget/pdf/FY22GBM.pdf](http://www.nj.gov/treasury/omb/publications/22budget/pdf/FY22GBM.pdf)
2. New Jersey Treasury. (2020, March). The Governor's FY 2021 Budget Detailed Budget. Retrieved December 2022 from <https://www.nj.gov/treasury/omb/publications/21budget/pdf/FY21GBM.pdf>

### G.2. Department Of Mental Health & Addiction: Spending Over Time

1. New Jersey Treasury. (2021, March). The Governor's FY 2022 Budget Detailed Budget. Retrieved December 2022 from [www.nj.gov/treasury/omb/publications/22budget/pdf/FY22GBM.pdf](http://www.nj.gov/treasury/omb/publications/22budget/pdf/FY22GBM.pdf)
2. New Jersey Treasury. (2020, March). The Governor's FY 2021 Budget Detailed Budget. Retrieved December 2022 from <https://www.nj.gov/treasury/omb/publications/21budget/pdf/FY21GBM.pdf>
3. New Jersey Treasury. (2019, March). The Governor's FY 2020 Budget Detailed Budget. Retrieved December 2022 from <https://www.nj.gov/treasury/omb/publications/20budget/pdf/FY20GBM.pdf>
4. New Jersey Treasury. (2018, March). The Governor's FY 2019 Budget Detailed Budget. Retrieved December 2022 from <https://www.nj.gov/treasury/omb/publications/19budget/pdf/FY19BudgetBook.pdf>
5. New Jersey Treasury. (2017, February). The Governor's FY 2018 Budget Detailed Budget. Retrieved December 2022 from <https://www.nj.gov/treasury/omb/publications/18budget/pdf/FY18BudgetBook.pdf>
6. New Jersey Treasury. (2016, February). The Governor's FY 2017 Budget Detailed Budget. Retrieved December 2022 from <https://www.nj.gov/treasury/omb/publications/17budget/pdf/FY17BudgetBook.pdf>



## H.3. Sources

### G.3. State Psychiatric Institutions

1. New Jersey Department of Health. (2022). State Psychiatric Hospitals. Retrieved December 2022 from <https://www.nj.gov/health/integratedhealth/hospitals/>
2. New Jersey Department of Health. (2022, November). State Psychiatric Hospital Monthly Patient Census. Retrieved December 2022 from [https://www.nj.gov/health/integratedhealth/documents/hospitals/reports/STATE\\_HOSP\\_CENSUS\\_FY2022.pdf](https://www.nj.gov/health/integratedhealth/documents/hospitals/reports/STATE_HOSP_CENSUS_FY2022.pdf)
3. New Jersey Department of Health. (2022, November). State Psychiatric Hospital Monthly Admissions. Retrieved December 2022 from [https://www.nj.gov/health/integratedhealth/documents/hospitals/reports/STATE\\_HOSP\\_ADMISSIONS\\_FY2022.pdf](https://www.nj.gov/health/integratedhealth/documents/hospitals/reports/STATE_HOSP_ADMISSIONS_FY2022.pdf)
4. New Jersey Department of Health. (2022, November). State Psychiatric Hospital Monthly Discharges. Retrieved December 2022 from [https://www.nj.gov/health/integratedhealth/documents/hospitals/reports/STATE\\_HOSP\\_DISCHARGES\\_FY2022.pdf](https://www.nj.gov/health/integratedhealth/documents/hospitals/reports/STATE_HOSP_DISCHARGES_FY2022.pdf)

### G.4. Behavioral Health Safety-Net Delivery System

1. New Jersey Division of Mental Health & Addiction Services. About DMHAS. Retrieved December 2022 from <https://www.state.nj.us/humanservices/dmhas/home/about/>
2. New Jersey Division of Mental Health & Addiction Services. Community Mental Health Services. Retrieved December 2022 from [https://www.state.nj.us/humanservices/dmhas/resources/services/treatment/mh\\_community.html](https://www.state.nj.us/humanservices/dmhas/resources/services/treatment/mh_community.html)
3. New Jersey Division of Mental Health & Addiction Services. Mental Health Agency Listing. Retrieved December 2022 from [https://nj.gov/humanservices/dmhas/home/hotlines/MH\\_Dir\\_COMPLETE.pdf](https://nj.gov/humanservices/dmhas/home/hotlines/MH_Dir_COMPLETE.pdf)
4. Rutgers University Behavioral Health Care. (2019). UBHC Services. Retrieved December 2022 from <https://ubhc.rutgers.edu/services/adult/index.html>