



# Louisiana Health & Human Services System Market Profile



# Health & Human Services System Market Profile Overview

## A. [Executive Summary](#)

1. Health Care Coverage by Payer
2. Medicaid Care Coordination Initiatives
3. Behavioral Health Safety-Net System Overview

## B. [Health Financing System Overview](#)

1. Population Demographics
2. Population Centers
3. Population Distribution By Payer
4. Largest Health Plans
5. Health Insurance Marketplace
6. Accountable Care Organizations

## C. [Medicaid Administration, Governance & Operations](#)

1. Medicaid Governance
2. Medicaid Program Spending
3. Medicaid Expansion Status
4. Medicaid Program Benefits

## D. [Medicaid Financing & Service Delivery System](#)

1. Medicaid Financing & Service Delivery System
2. Medicaid FFS Program
3. Medicaid Managed Care Program
4. Medicaid Program: Care Coordination Initiatives
5. Medicaid Program Waivers
6. Medicaid Program: New Initiatives

## E. [Dual Eligible Financing & Service Delivery System](#)

1. Dual Eligible Medicaid Financing & Service Delivery System
2. Largest Dual Eligible Health Plans By Estimated SMI Enrollment
3. Dual Eligible Medicaid Financing & Delivery System: Overview
4. Dual Eligible Medicaid Financing & Delivery System: New Initiatives

## F. [Long-Term Services & Supports System](#)

1. LTSS Financing & Service Delivery System
2. LTSS Medicaid Financing & Delivery System: Overview
3. LTSS Health Plan Characteristics
4. LTSS Program Benefits
5. LTSS Medicaid Financing & Delivery System: New Initiatives

## G. [State Behavioral Health Administration & Finance System](#)

1. Public Behavioral Health System Governance
2. Public Behavioral Health System Spending
3. State Psychiatric Institutions
4. Behavioral Health Safety-Net Delivery System

## H. [Appendices](#)

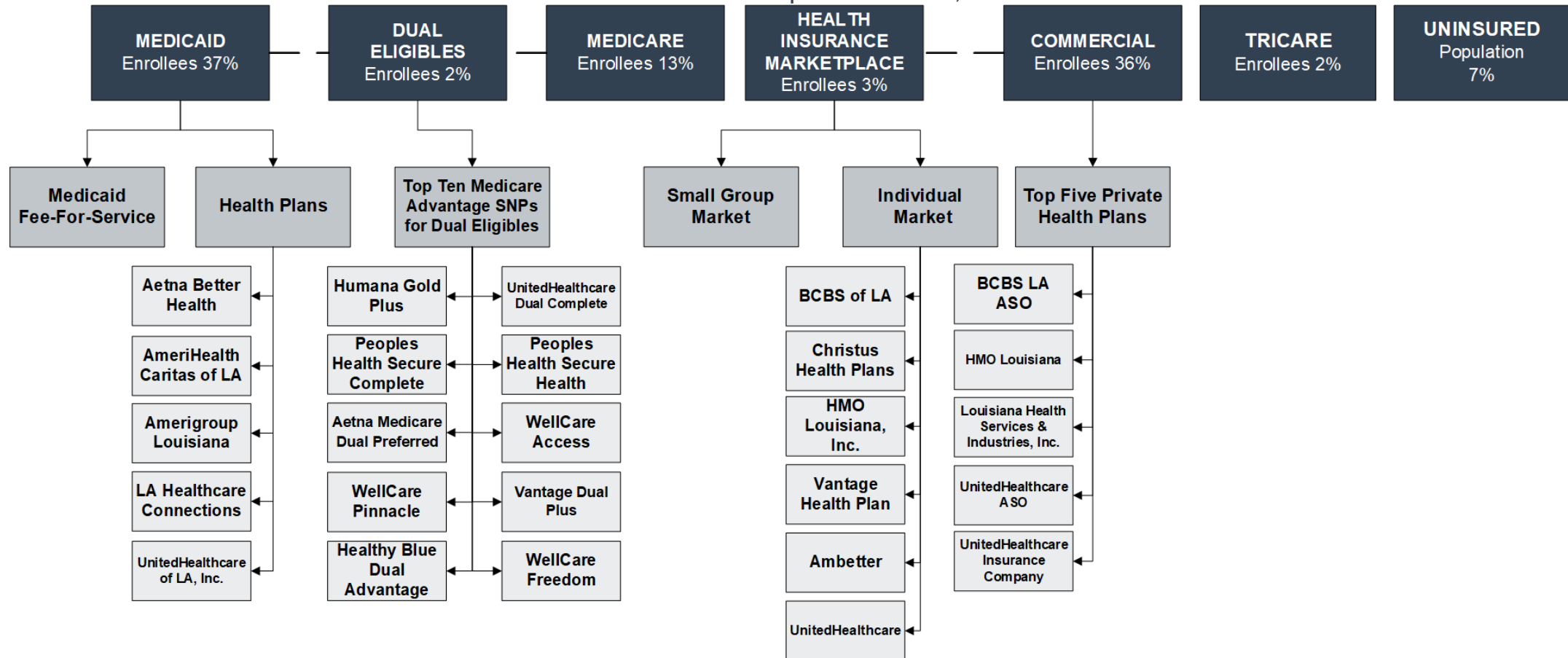
1. *OPEN MINDS* Estimates For The Share Of SMI Consumers By Payer/Plan
2. Glossary Of Terms
3. Sources

# A. Executive Summary

# A.1. Louisiana Physical Health Care Coverage by Payer

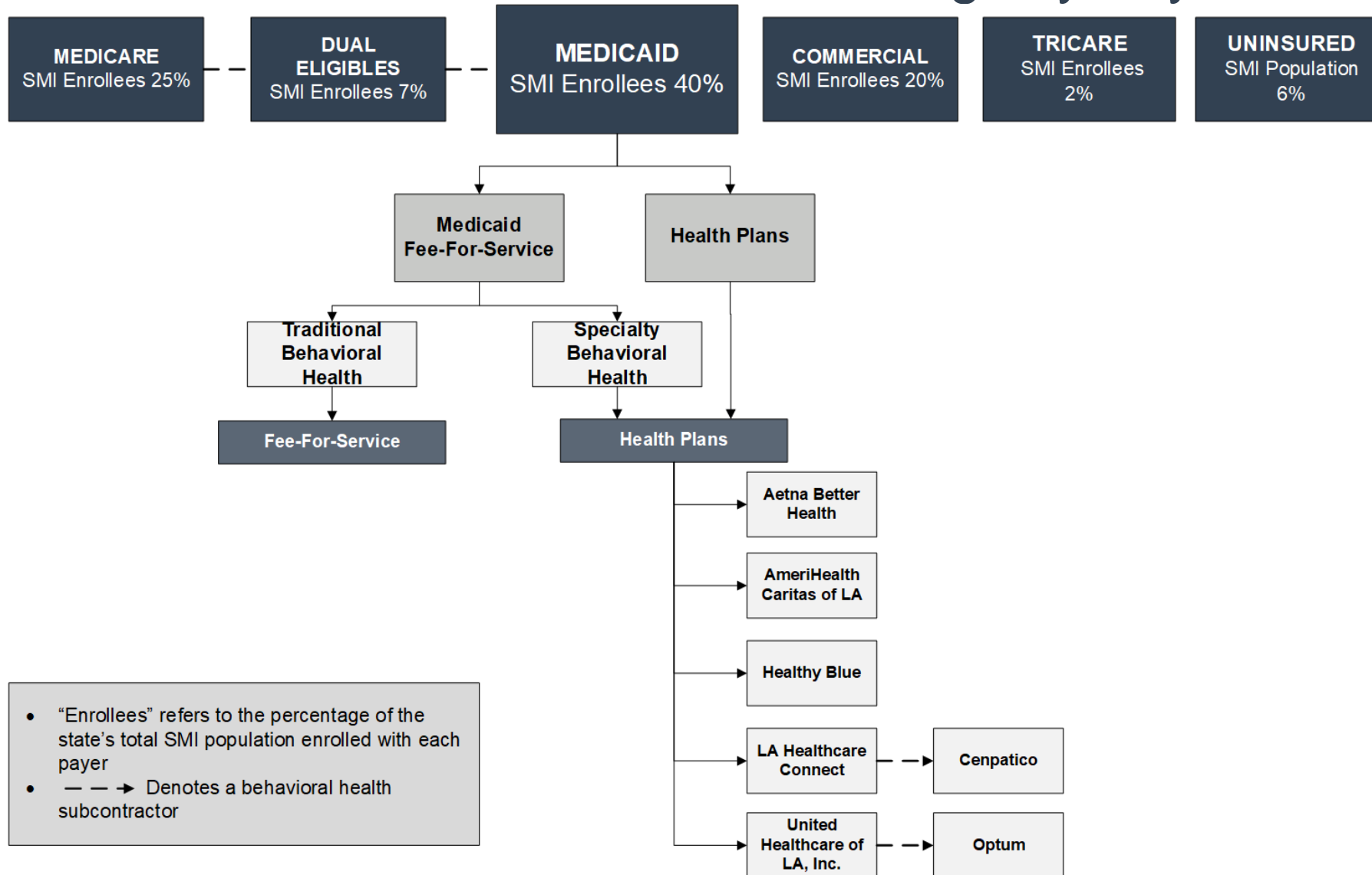
Total Louisiana Population- 4,624,047

Estimated SMI Population- 351,647



“Enrollees” refers to the percentage of the state’s total population enrolled with each payer.

# A.1. Louisiana Behavioral Health Care Coverage by Payer



## A.2. Health & Human Services System Care Coordination Initiatives

Medicaid Care Coordination Entities For Chronic Care Populations (Including SMI)		
Care Coordination Entity	Active Program	Description
Managed Care Health Plan	✓	Health plans are responsible for care coordination.
Primary Care Case Management (PCCM)		None
Accountable Care Organization (ACO) Program		None
Affordable Care Act (ACA) Model Health Home		None
Patient-Centered Medical Home		None
Dual Eligible Demonstration		None
Managed Long-Term Services and Supports (MLTSS)		None
Certified Community Behavioral Health Clinics (CCBHC) Grant		None

## A.3. Health Care Safety-Net Delivery System

### State Agencies Responsible For Uninsured Citizens & Delivery System Model

#### Physical Health Services

- The Louisiana Department of Health, Bureau of Primary Care and Rural Health provides physical health services to the safety-net population.

#### Mental Health Services

- The Louisiana Office of Behavioral Health provides mental health services to the safety-net population through ten local governing entities (LGEs).

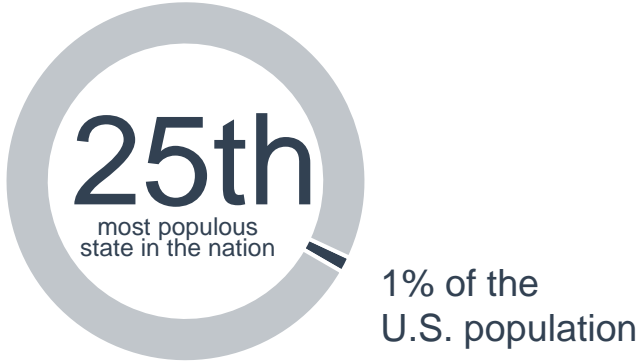
#### Addiction Treatment Services

- Addiction treatment services are also provided through the state's LGEs.

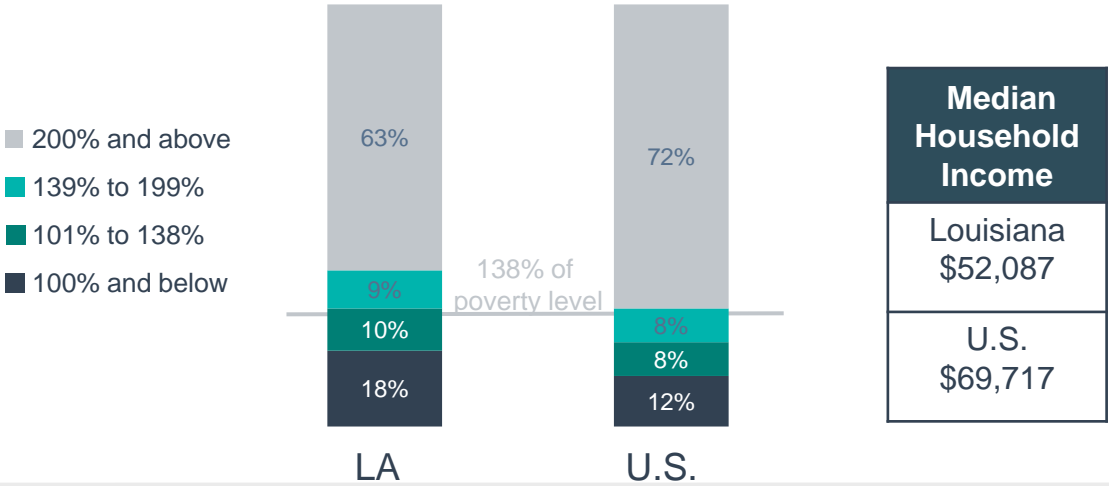
# B. Louisiana Health Financing System Overview

# B.1. Population Demographics

Total Louisiana Population- 4,624,047  
 Estimated SMI Population- 351,647



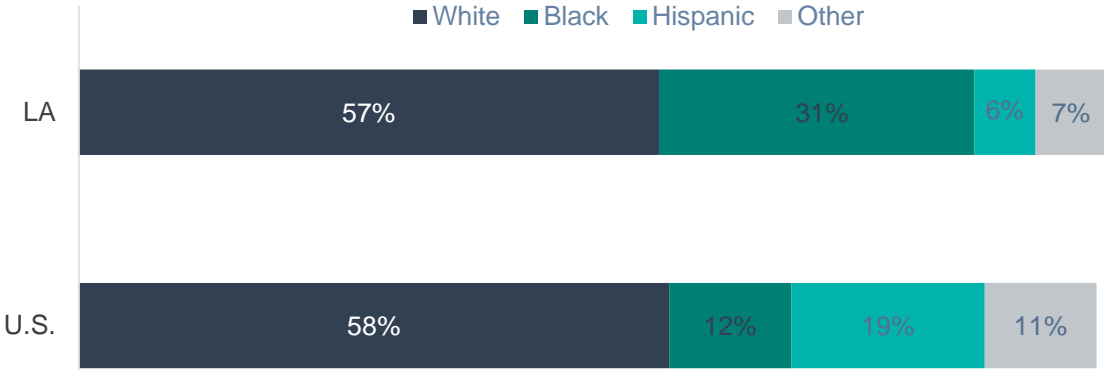
Population Distribution By Income To Poverty Threshold Ratio



Population Distribution By Age



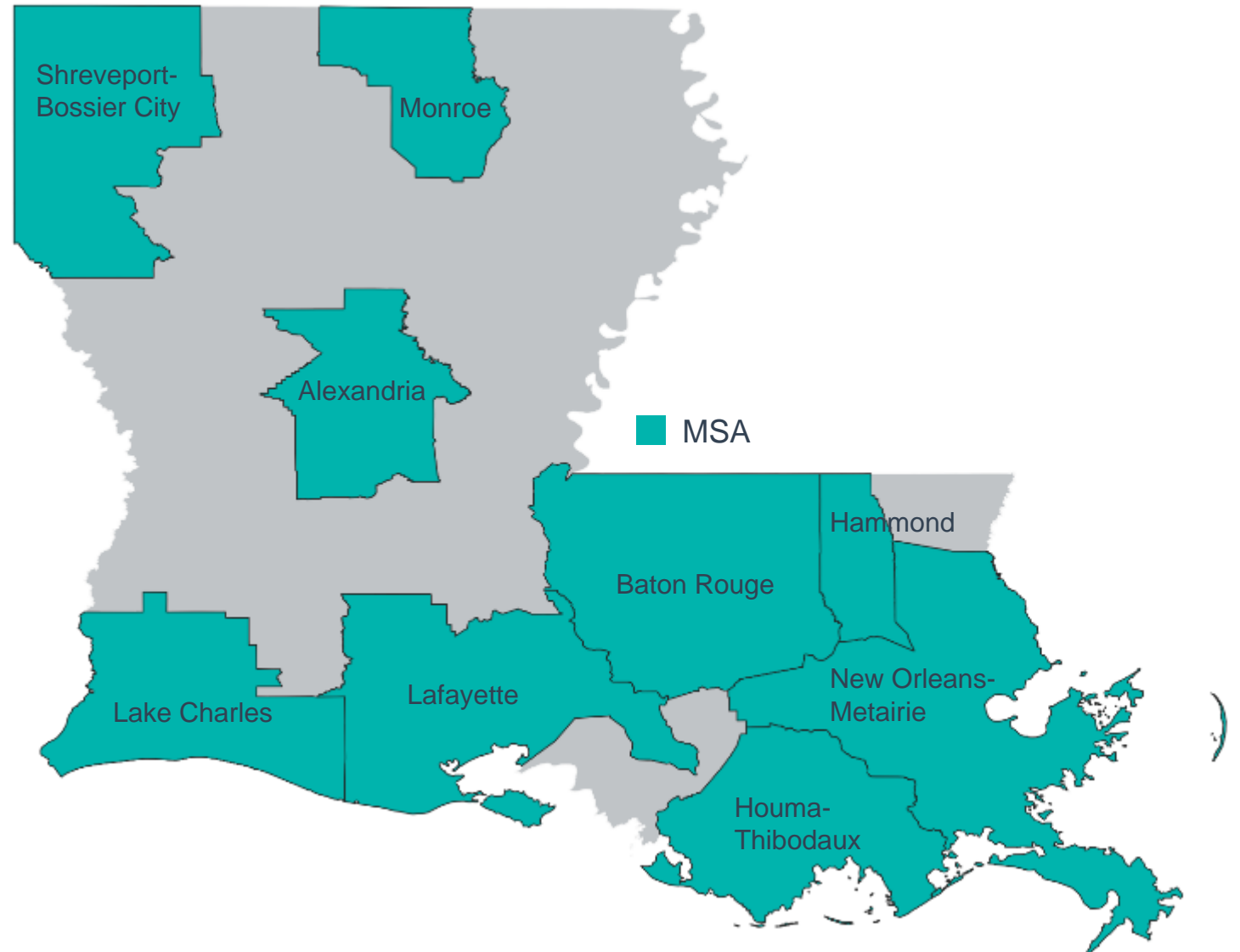
Louisiana & U.S. Racial Composition



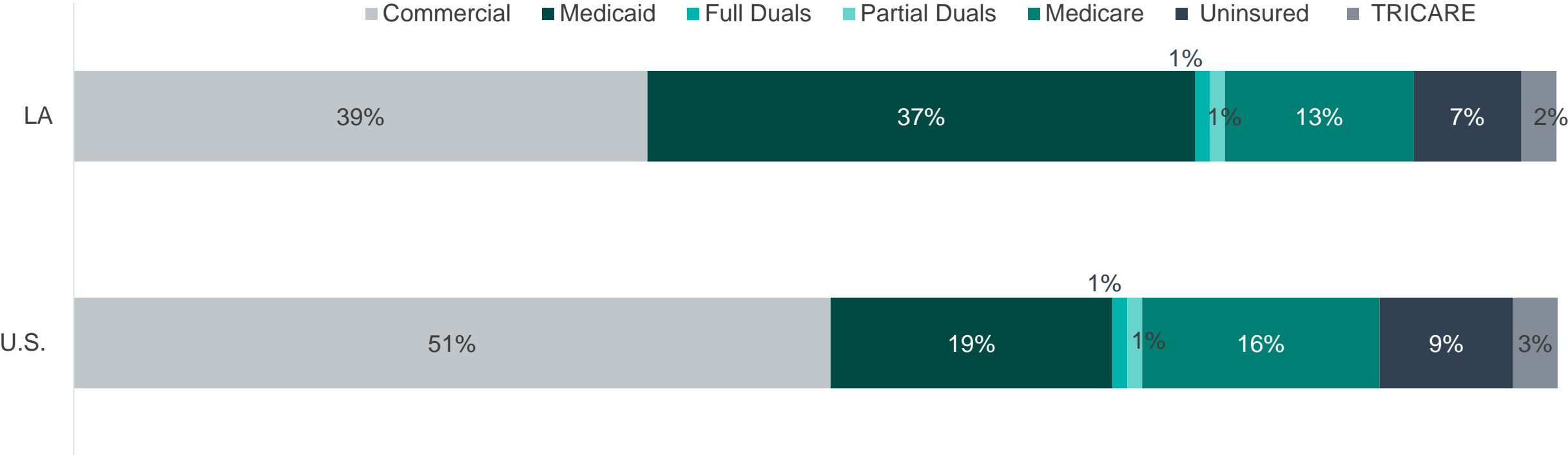
Totals may not equal 100% due to rounding.

## B.2. Population Centers

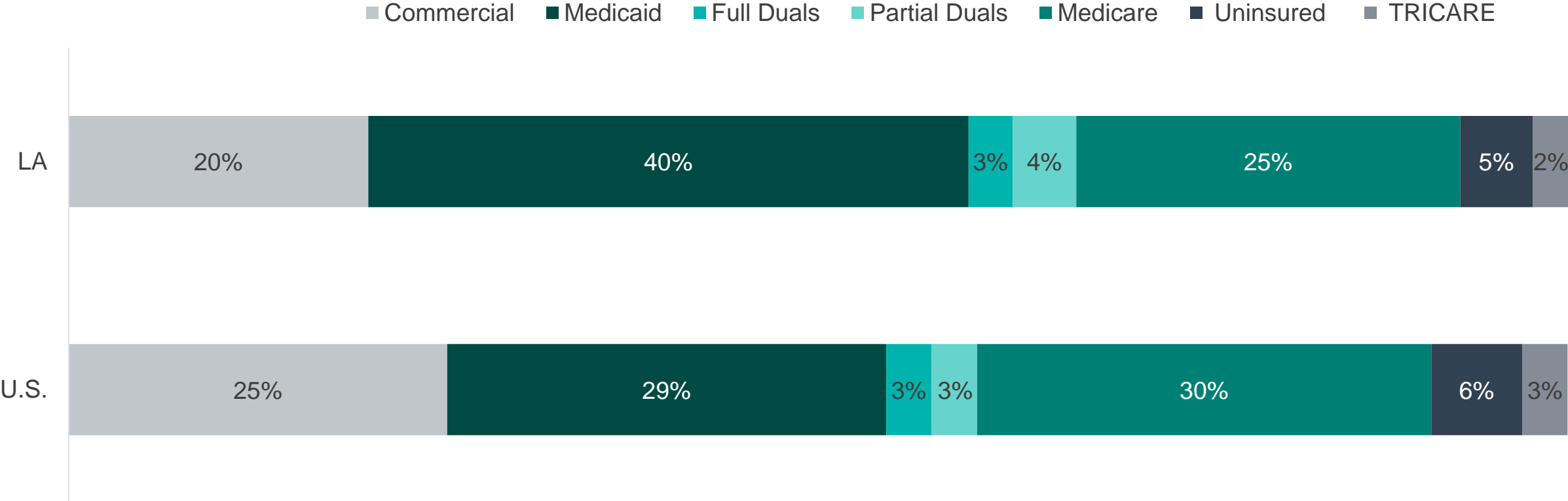
Metropolitan Statistical Areas (MSAs)		
MSA	Louisiana Residents	Percent Of Population
<b>Total MSA Population</b>	<b>3,909,563</b>	<b>85%</b>
New Orleans-Metairie, LA	1,261,726	27%
Baton Rouge, LA	871,905	19%
Lafayette, LA	479,212	10%
Shreveport-Bossier City, LA	389,155	8%
Lake Charles, LA	210,362	5%
Houma-Thibodaux, LA	206,212	4%
Monroe, LA	204,884	4%
Alexandria, LA	150,890	3%
Hammond, LA	135,217	3%



# B.3. Population Distribution By Payer: National vs. State



# B.3. SMI Population Distribution By Payer: National vs. State



Totals may not equal 100% due to rounding.

## B.4. Largest Louisiana Payers By Enrollment

Plan Name	Plan Type	Enrollment*
Blue Cross and Blue Shield of Louisiana ASO	Commercial Administrative Services Only (ASO)	897,657
LA Healthcare Connections	Medicaid managed care	516,284
UnitedHealthcare Community Plan	Medicaid managed care	491,148
Louisiana Medicare Fee-For-Service (FFS)	Medicare FFS	367,798
Louisiana Health Service and Indemnity Company	Commercial	351,853
Amerigroup Louisiana	Medicaid managed care	333,685
UnitedHealthcare ASO	Commercial ASO	247,314
AmeriHealth Caritas Louisiana	Medicaid managed care	221,411
Humana Gold Plus	Medicare advantage	191,592
HMO Louisiana	Commercial	144,253

\*Medicaid enrollment as of March 2023; TRICARE as of December 2022; Commercial as of March 2023; Medicare enrollment as of March 2023

## B.4. Largest Louisiana Payers By Estimated SMI Enrollment

Plan Name	Plan Type	Enrollment*	Estimated SMI Enrollment
Louisiana Medicare Fee-for-Service (FFS)	Medicare FFS	367,798	58,848
LA Healthcare Connections	Medicaid managed care	516,284	44,400
UnitedHealthcare Community Plan	Medicaid managed care	491,148	42,239
Blue Cross and Blue Shield of Louisiana ASO	Commercial ASO	897,657	36,804
Humana Gold Plus	Medicare advantage	191,592	30,655
Amerigroup Louisiana	Medicaid managed care	333,685	28,697
AmeriHealth Caritas Louisiana	Medicaid managed care	221,411	19,041
Humana Gold Plus	Medicare advantage	56,481	18,074
Louisiana Health service and Indemnity Co.	Commercial	351,853	14,426
Peoples Health	Medicare advantage	85,878	13,740

\*Medicaid enrollment as of March 2023; TRICARE as of December 2022; Commercial as of March 2023; Medicare enrollment as of March 2023

# B.5. Health Insurance Marketplace

Health Insurance Marketplace	
Health Plan Marketplace Percentage	3%
Type of Marketplace	Federal
Individual Enrollment Contact	<a href="https://www.healthcare.gov/">https://www.healthcare.gov/</a>
	1-800-318-2596
Small Business Enrollment Contact	No small group plans are available through the marketplace. Employers must purchase coverage directly from an insurance carrier or through an insurance broker.

2023 Individual Market Health Plans
<ol style="list-style-type: none"> <li>1. Ambetter</li> <li>2. Blue Cross Blue Shield of Louisiana</li> <li>3. Christus Health Plans</li> <li>4. HMO Louisiana, Inc.</li> <li>5. UnitedHealthcare</li> <li>6. Vantage Health Plan, Inc.</li> </ol>
2023 Small Group Market Health Plans
None

# B.6. Accountable Care Organizations

Commercial ACOs	
ACO	Commercial Insurer
Ochsner Accountable Care Network, LLC	UnitedHealthcare

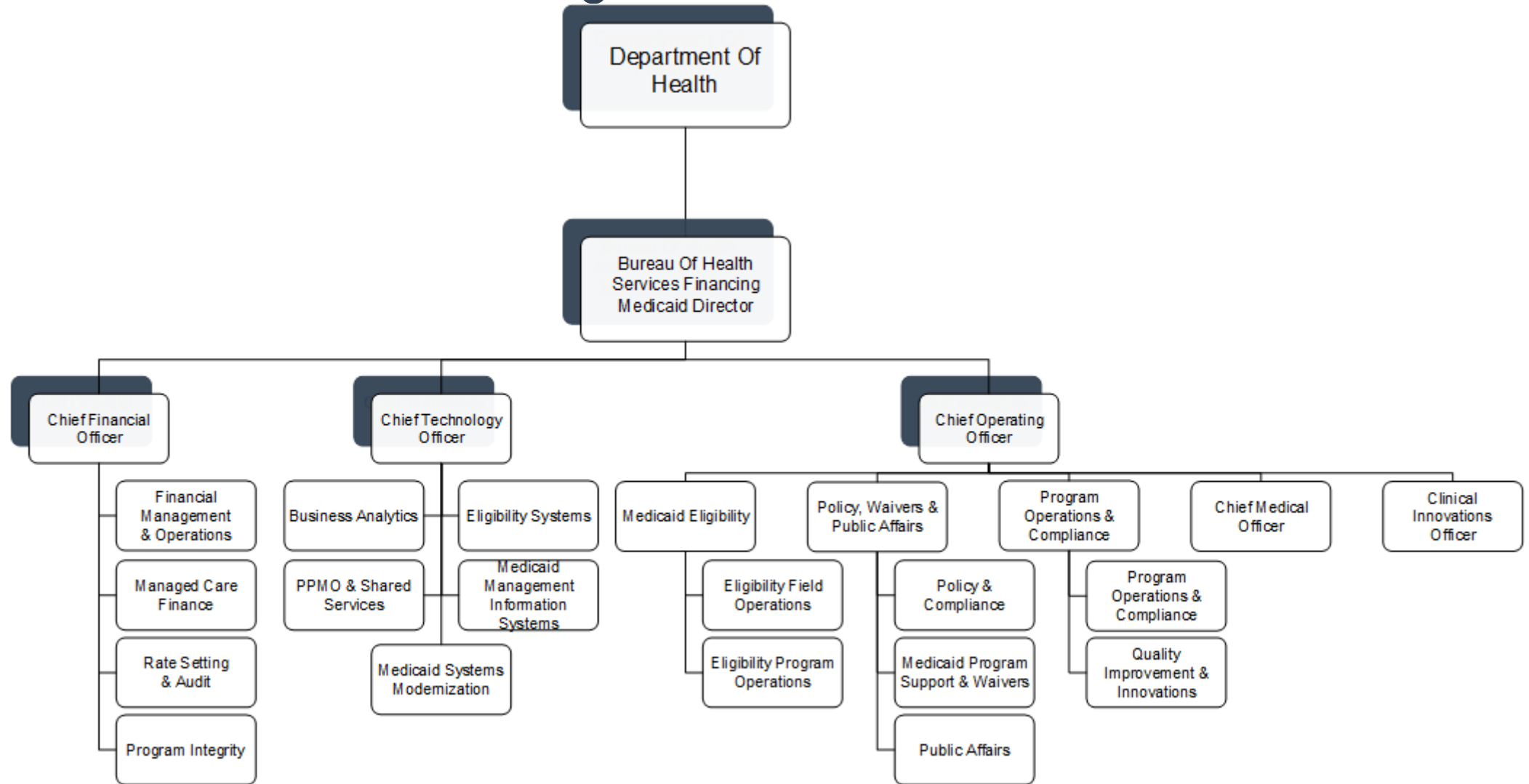
Medicare Next Generation ACOs
1. Franciscan Missionaries of Our Lady Health System Clinical Network, LLC

End-Stage Renal Disease ACOs
1. Fresenius Seamless Care of Louisiana

Medicare Shared Savings ACOs
1. ACO Clinical Partners, LLC
2. Aledade Accountable Care 22, LLC
3. Aledade Accountable Care 35, LLC
4. Aledade Louisiana ACO, LLC
5. CHRISTUS Health Quality Care Alliance, LLC
6. CHSPSC ACO 1, LLC
7. CHSPSC ACO 7, LLC
8. Health Plus Network
9. LHP Accountable Care (Formerly Crescent City ACO)
10. Louisiana Physicians ACO, LLC
11. Louisiana Primary Care Accountable Care Organization, LLC
12. Ochsner Accountable Care Network, LLC
13. Steward National Care Network, Inc
14. The Physicians Alliance LLC
15. TP-ACO, LLC

## C. Medicaid Administration, Governance & Operations

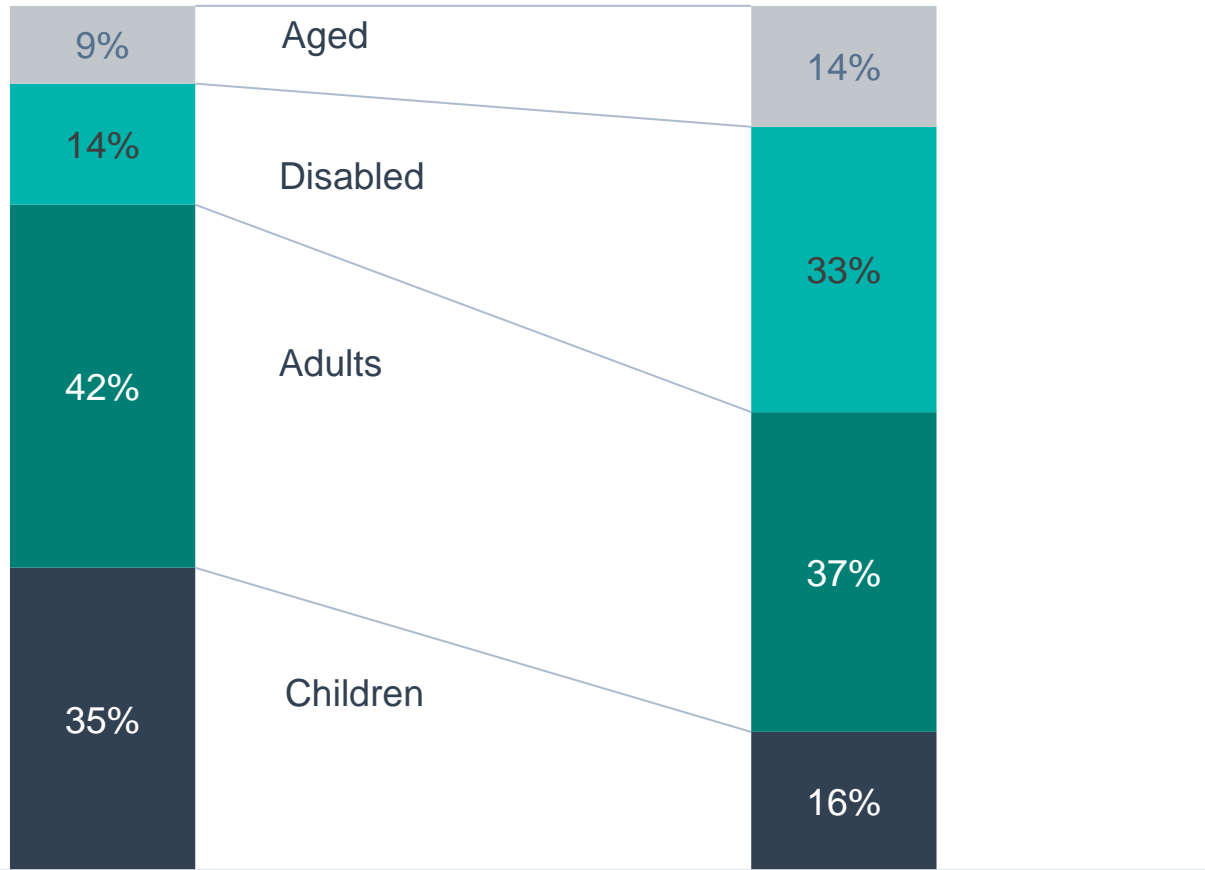
# C.1. Medicaid Governance: Organization Chart



## C.1. Medicaid Governance: Key Leadership

Name	Position	Department	Email
Courtney N. Phillips, M.D.	Secretary	Louisiana Department of Health (LDH)	courtney.phillips@la.gov
Pam Diez	Undersecretary	LDH	pam.diez@la.gov
Tara LeBlanc	Medicaid Executive Director	LDH, Bureau of Health Services Financing	tara.leblanc@la.gov
Mary Julien	Deputy Director Eligibility	LDH, Bureau of Health Services Financing	charlene.julien@la.gov
Tangela Womack	Deputy Director, Policy, Waivers, and Public Affairs	LDH, Bureau of Health Services Financing	tangela.womack@la.gov
Kolynda Parjer	Deputy Director, Program Operations and Compliance	LDH, Bureau of Health Services Financing	kolynda.parker@la.gov
Shantel Hebert-Magee	Chief Medical Officer	LDH, Bureau of Health Services Financing	shantel.hebert-magee@la.gov

## C.2. Medicaid Program Spending By Eligibility Group



\*Percent of Total Medicaid Population

Percent of Total Medicaid Spending

\*Based on FY 2020 data

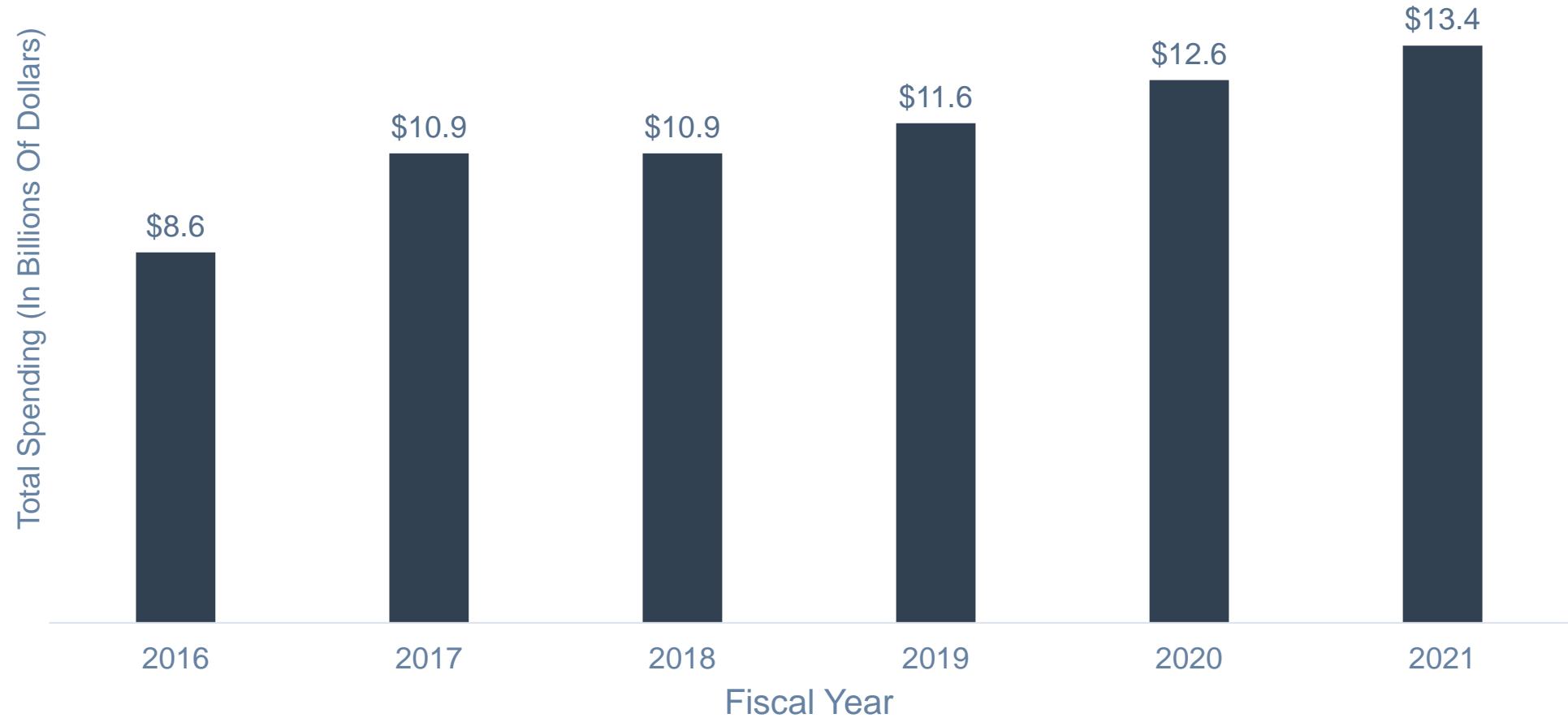
Medicaid Spending Per Enrollee, FY 2020		
	U.S.	LA
All populations	\$8,718	\$7,403
Children	\$3,495	\$3,263
Adults	\$5,461	\$6,418
Expansion adults	\$7,227	\$6,969
Blind and disabled	\$23,123	\$15,796
Aged	\$18,552	\$11,926

## C.2. Medicaid Program Spending: Budget

Budget Item	SFY 2021 Spending	Percent Of Budget
Managed care and premium assistance	\$9,109,000,000	68%
Institutional LTSS	\$1,539,000,000	11%
Hospital	\$1,120,000,000	8%
Home- and community-based LTSS	\$837,000,000	6%
Medicare premiums and coinsurance	\$450,000,000	3%
Other acute services	\$238,000,000	2%
Drugs	\$48,000,000	<1%
Physician	\$30,000,000	<1%
Clinic and health center	\$29,000,000	<1%
Other practitioners	\$1,000,000	<1%
Dental	-	0%
<b>Budget Total: \$13,401,000,000</b>		

Federal & County Financial Participation	
FY 2023 Federal Medical Assistance Percentage (FMAP)	73.5%
CY 2023 Newly Eligible FMAP (expansion population)	88%
Counties contribute to state Medicaid share	No

## C.2. Medicaid Program Spending: Change Over Time



## C.3. Medicaid Expansion Status

Medicaid Expansion	
Participating In Expansion	Yes
Date Of Expansion	July 2016
Medicaid Eligibility Income Limit For Able-Bodied Adults	133% of Federal Poverty Level (FPL) Note: The Patient Protection and Affordable Care Act (PPACA) requires that 5% of income be disregarded when determining eligibility.
Legislation Used To Expand Medicaid	Senate Bill 26, 98th General Assembly
Number Of Individuals Enrolled In The Expansion Group (September 2022)	744,752
Number Of Enrollees Newly Eligible Due To Expansion	744,752
Benefits Plan For Expansion Population	The alternative benefit plan is identical to the state plan.

## C.4. Medicaid Program Benefits

### Federally Mandated Services

1. Inpatient hospital services other than services in an institution for mental disease (IMD)
2. Outpatient hospital services
3. Rural Health Clinic services
4. Federally Qualified Health Center (FQHC) services
5. Laboratory and x-ray services
6. Nursing facilities for individuals 21 and over
7. Early and Periodic Screening and Diagnosis and Treatment (EPSDT)
8. Family planning services and supplies
9. Free standing birth centers
10. Pregnancy-related and postpartum services
11. Nurse midwife services
12. Tobacco cessation programs for pregnant women
13. Physician services
14. Medical and surgical services of a dentist
15. Home health services
16. Nurse practitioner services
17. Non-emergency transportation to medical care

### Louisiana's Optional Services

1. Case management services
2. Nurse anesthetist and clinical nurse specialist services
3. Clinic services
4. Dentures
5. Preventive and rehabilitative services
6. Hospice services
7. Inpatient psychiatric services for individuals 22 and under
8. Intermediate care facility services for individuals with intellectual disabilities
9. Nursing facility services for individuals under 21 years old
10. Podiatric services
11. Prescribed drugs
12. Prosthetic devices
13. Special tuberculosis services
14. Transplant services
15. Services for individuals ages 65 or older in IMDs

# D. Medicaid Financing & Service Delivery System

## D.1. Medicaid Financing & Service Delivery System

Medicaid System Characteristics		
Characteristics	Medicaid Fee-For-Service (FFS)	Medicaid Managed Care
Enrollment (March 2023)	65,911	1,860,170
SMI Enrollment	<ul style="list-style-type: none"> <li>Louisiana does not specifically preclude individuals with SMI from enrolling in managed care; therefore, the majority of the SMI population is enrolled in managed care.</li> <li>Estimated 3% of the SMI population in FFS, 97% in managed care</li> </ul>	
Management	<ul style="list-style-type: none"> <li>Physical health and traditional behavioral health: Department of Health</li> <li>Specialty behavioral health: Four health plans</li> </ul>	Four health plans
Payment Model	<ul style="list-style-type: none"> <li>Physical health and traditional behavioral health: FFS</li> <li>Specialty behavioral health: Capitated rate</li> </ul>	Capitated rate
Geographic Service Area	Statewide	Statewide

**Total Medicaid: 1,926,081 | Total Medicaid With SMI: 165,643**

## D.1. Medicaid System Overview

Medicaid Financial Delivery System Enrollment	
Total Medicaid population distribution	As of March 2023: 3% in fee-for-service (FFS), 97% in managed care
SMI population inclusion in managed care	<ul style="list-style-type: none"> <li>• Louisiana does not specifically preclude individuals with SMI from enrolling in managed care; therefore, the majority of the SMI population is enrolled in managed care.</li> <li>• Estimated 3% of population in FFS, 97% in managed care</li> </ul>
Dual eligible population inclusion in managed care	<ul style="list-style-type: none"> <li>• FFS is mandatory for dual eligibles</li> <li>• Estimated 100% of population in FFS, 0% in managed care</li> </ul>
Long-term services and supports system inclusion in managed care	<ul style="list-style-type: none"> <li>• LTSS beneficiaries are excluded from managed care and receive services FFS.</li> </ul>

Medicaid Financing & Risk Arrangements: Behavioral Health		
Service Type	FFS Population	Managed Care Population
Traditional behavioral health	Covered FFS by the state	Included in the health plan's capitation rate
Specialty behavioral health	Covered by the Medicaid health plans who receive a capitated rate to deliver behavioral health services only	Included in the health plan's capitation rate
Pharmaceuticals	Covered FFS by the state	Included in the health plan's capitation rate
Long-term services and supports (LTSS)	Covered FFS by the state	Covered FFS by the state

## D.1. Medicaid System Care Coordination Initiatives

Medicaid Care Coordination Entities For Chronic Care Populations (Including SMI)		
Care Coordination Entity	Active Program	Description
Managed Care Health Plan	✓	Health plans are responsible for care coordination.
Primary Care Case Management (PCCM)		None
Accountable Care Organization (ACO) Program		None
Affordable Care Act (ACA) Model Health Home		None
Patient-Centered Medical Home		None
Dual Eligible Demonstration		None
Managed Long-Term Services and Supports (MLTSS)		None
Certified Community Behavioral Health Clinics (CCBHC) Grant		None

## D.1. Medicaid Service Delivery System Enrollment By Eligibility Group

Population	Mandatory FFS Enrollment	Option To Enroll In FFS Or Managed Care	Mandatory Managed Care Enrollment
Parents and caretakers			X
Children			X
Blind and disabled individuals			X
Aged individuals			X
Dual eligibles	X		
Medicaid expansion			X
Individuals residing in nursing homes	X		
Individuals residing in ICF/IDD	X		
Individuals in foster care			X
Other populations	<ul style="list-style-type: none"> <li>• Specialty program enrollees</li> <li>• Individuals receiving family planning program services only</li> <li>• Individuals receiving emergency services only</li> </ul>	<ul style="list-style-type: none"> <li>• Individuals receiving home- and community-based services (HCBS)</li> <li>• Family Opportunity Act Medicaid buy-in enrollees</li> <li>• Native Americans</li> <li>• Children with disabilities, receiving adoption assistance, receiving services through a family-centered community-based coordinated care system</li> <li>• Individuals with I/DD under age 21</li> </ul>	Breast and cervical cancer program enrollees

## D.2. Medicaid FFS Program: Overview

- FFS enrollment as of March 2023 was 65,911.

## D.2. Medicaid FFS Program: Behavioral Health Overview

- Traditional behavioral health and all pharmacy services are financed FFS and administered by the state.
  - Traditional behavioral health services include screening, prevention, early intervention, medication management, and treatment and referral services in a primary care setting.
- Specialized behavioral health benefits, along with non-emergency medical transportation are delivered to the full benefit FFS population through the four Medicaid health plans.
  - The health plans receive a capitated rate for behavioral health services only for this population.
  - Individuals are offered a choice of health plan for their specialty behavioral health services. If they fail to select a plan, the state automatically enrolls them in a plan.
  - See [section D.3](#) for a list of plans.
- For children enrolled in the Coordinated System of Care (CSoC), a waiver program for youth in or at-risk for out-of-home treatment, behavioral health benefits are coordinated by Magellan who is at-risk for these services.
  - The services offered by CsoC are: Parent Support and Training, Youth Support and Training, Independent Living and Skills building and Short-Term Respite.
- In May 2020, a series of amendments were proposed for the CSoC program which would add Health Insurance Provider Fee Reimbursement and Opioid Treatment Programs as a covered benefit.
  - Currently, the state is reviewing public comments on the amendments.

# D.2. Medicaid FFS Program: Behavioral Health Benefits

FFS Mental Health Benefits Provided By Health Plans	
1.	Services provided by psychiatrists, licensed mental health professionals, and advance practice registered nurses
2.	Community psychiatric support and treatment including assertive community treatment
3.	Psychosocial rehabilitation
4.	Crisis intervention
5.	Psychiatric residential treatment facilities and therapeutic group homes for persons under age 21
6.	Crisis stabilization for persons under age 21
7.	Inpatient care
8.	Peer Support Services

FFS Addiction Treatment Benefits Provided By Health Plans	
1.	Outpatient services
2.	Ambulatory withdrawal management
3.	Intensive outpatient services
4.	Inpatient services
5.	Residential treatment
6.	Clinically managed withdrawal management
7.	Medically supervised withdrawal management
8.	Medication assisted treatment (MAT)

## D.2. Medicaid FFS Program: SMI Population

- Louisiana does not specifically preclude individuals with SMI from enrolling in managed care; therefore, the majority of the SMI population is enrolled in managed care
- Members of the FFS population who require specialized behavioral health services must enroll in a Medicaid health plan to receive those services, as well as non-emergency medical transportation.
- As of March 2023, *OPEN MINDS* estimates that 3% of the SMI population was enrolled in FFS.

## D.2. Medicaid FFS Program: Pharmacy Benefit

Louisiana FFS Program Pharmacy Benefit & Utilization Restrictions	
<b>State Uses Pharmacy Benefit Manager</b>	Louisiana has created its own pharmacy benefit manager that is owned and administered by the state.
<b>Responsible For Financing General Pharmacy Benefit</b>	FFS
<b>Responsible For Financing Mental Health Pharmacy Benefit</b>	FFS
<b>State Uses A Preferred Drug List (PDL) For General Pharmacy</b>	Yes, the state has a single uniform PDL for the FFS and managed care programs.
<b>State Uses A PDL For Mental Health Drugs</b>	Yes, mental health drugs are included on the general PDL.
<b>State Uses A PDL For Addiction Treatment Drugs</b>	Yes, addiction treatment drugs are included on the general PDL.
<b>Coverage Of Antipsychotic Injectable Medications</b>	Included on the PDL
<b>Utilization Restrictions For Mental Health Or Addiction Treatment Drugs</b>	Drugs may be subject to diagnosis code, quantity limits, and age limit requirements.
<b>State Has A Pharmacy Lock-In Program Or Other Restriction Program</b>	Yes, individuals who misuse or overutilize prescription and physician services may be locked in to one pharmacy, one physician, and up to three specialists.

## D.3. Medicaid Managed Care Program: Overview

- Managed care enrollment as of March 2023 was 1,860,170.
- The Medicaid managed care program is called Healthy Louisiana.
- The health plans deliver physical health and behavioral health benefits to most populations, including families and children, Medicaid expansion adults, and aged and disabled adults.
- Due to a protest by the unchosen plans, the state was unable to begin the plans as originally planned. Due to this, emergency contracts were crafted with the previous managed care organizations. These are in place until the protest lawsuits are settled.
  - In August 2020, the state announced an RFP for their managed care contracts. In 2021 the contract was awarded to: Aetna Better Health of Louisiana, AmeriHealth Caritas of Louisiana, Healthy Blue, Humana Health Plan, and Louisiana Healthcare Connections, Inc, and UnitedHealthcare.
- For 2023 at least 40% of the total contractual arrangements with providers must be linked to a VBP model.

# D.3. Medicaid Managed Care Program: Health Plan Characteristics

Aetna Better Health of Louisiana	AmeriHealth Caritas of Louisiana	Healthy Blue
<ol style="list-style-type: none"><li>1. Profit status: For-profit</li><li>2. Parent company: Aetna/ CVS</li><li>3. Behavioral health subcontractor: None</li><li>4. Pharmacy benefits manager:: CVS Caremark</li><li>5. Enrollment share: 8%</li></ol>	<ol style="list-style-type: none"><li>1. Profit status: For-profit</li><li>2. Parent company: AmeriHealth Caritas</li><li>3. Behavioral health subcontractor: None</li><li>4. Pharmacy benefits manager: PerformRx</li><li>5. Enrollment share: 13%</li></ol>	<ol style="list-style-type: none"><li>1. Profit status: For-profit</li><li>2. Parent company: Blue Cross Blue Shield</li><li>3. Behavioral health subcontractor: None</li><li>4. Pharmacy benefits manager: IngenioRx</li><li>5. Enrollment share: 20%</li></ol>
LA Healthcare Connect	UnitedHealthcare Community Plan	
<ol style="list-style-type: none"><li>1. Profit status: For-profit</li><li>2. Parent company: Centene</li><li>3. Behavioral health subcontractor: Cenpatico</li><li>4. Pharmacy benefits manager: Envolve Pharmacy Services</li><li>5. Enrollment share: 30%</li></ol>	<ol style="list-style-type: none"><li>1. Profit status: For-profit</li><li>2. Parent company: UnitedHealthcare</li><li>3. Behavioral health subcontractor: Optum</li><li>4. Pharmacy benefits manager: OptumRx Pharmacy Solutions</li><li>5. Enrollment share: 29%</li></ol>	

## D.3. Medicaid Managed Care Program: Behavioral Health Benefits

Behavioral health and pharmacy benefits are included in the health plan's capitation rate.

### Managed Care Mental Health Benefits

1. Screening, prevention, and early intervention
2. Medication management
3. Diagnostic evaluation
4. Services provided by psychiatrists, licensed mental health professionals, and advance practice registered nurses
5. Community psychiatric support and treatment including assertive community treatment
6. Psychosocial rehabilitation
7. Crisis intervention
8. Psychiatric residential treatment facilities and therapeutic group homes for persons under age 21
9. Crisis stabilization for persons under age 21
10. Inpatient care
11. Peer Support Services

### Managed Care Addiction Treatment Benefits

1. Outpatient services
2. Ambulatory withdrawal management
3. Intensive outpatient services
4. Inpatient services
5. Residential treatment
6. Clinically managed withdrawal management
7. Medically supervised withdrawal management
8. Medication assisted treatment (MAT)

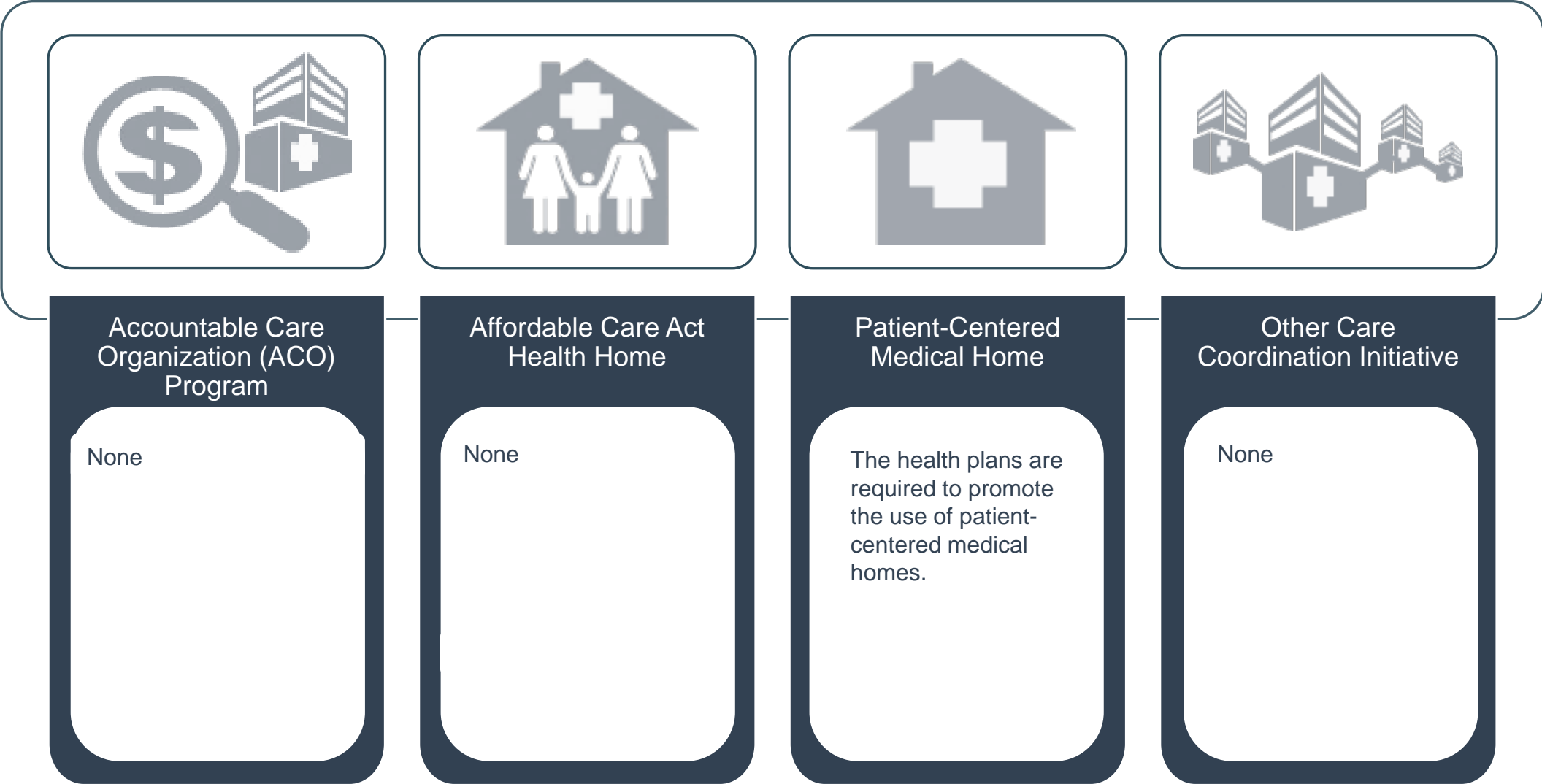
## D.3. Medicaid Managed Care Program: SMI Population

- Louisiana does not specifically preclude individuals with SMI from enrolling in managed care; therefore, the majority of the SMI population is enrolled in managed care.
- As of March 2023, *OPEN MINDS* estimates that 99% of the SMI population was enrolled in managed care.

## D.3. Medicaid Managed Care Program: Pharmacy Benefit

Louisiana Managed Care Program Pharmacy Benefit	
<b>Responsible For Financing General Pharmacy Benefit</b>	Health plan
<b>Responsible For Financing Mental Health Pharmacy Benefit</b>	Health plan
<b>Health Plan Uses A Preferred Drug List (PDL) For General Pharmacy</b>	On May 1, 2019, the state moved to a single preferred drug list (PDL) for the FFS program and the health plans.
<b>Health Plan Uses A PDL For Mental Health Drugs</b>	The state PDL includes mental health drugs.
<b>Health Plan Uses A PDL For Addiction Treatment Drugs</b>	The state PDL includes addiction treatment drugs.
<b>Health Plan Use Of Utilization Restrictions For Mental Health &amp; Addiction Treatment Drugs</b>	Each health plan is able to set their own prior authorization requirements for non-preferred drugs.
<b>Health Plan Allowed To Implement Pharmacy Lock-In Program</b>	Health plans may implement a lock-in program. Health plans are responsible for setting the requirements for the lock-in program subject to approval by the state.

# D.4. Medicaid Program: Care Coordination Initiatives



## D.5. Medicaid Program: Demonstration & Care Management Waivers

Waiver Title	Waiver Description	Waiver Type	Enrollment Cap	Effective Date	Expiration Date
Healthy Louisiana OUD/SUD Demonstration	Provides federal financial participation for the continuum of services to treat addictions to opioids and other substances, including services provided to Medicaid enrollees who are short-term residents in residential treatment facilities.	1115	None	02/01/2018	12/31/2027
Louisiana Dental Benefit Program	Provides dental benefits to most members of the Medicaid population through an at-risk prepaid ambulatory health plan.	1915(b1) (b4)	None	07/01/2022	06/30/2027
Louisiana Bayou Health and Coordinated System of Care	LDH will provide access to personal care services and individual placement support, which is a mental health evidence-based practice targeted to adults with serious mental illness who are either being diverted or transitioned from a nursing facility.	1915 (b1) (b3) (b4)	None	07/01/2022	06/30/2027

## D.5. Medicaid Program: Section 1915 (c) HCBS Waivers

Waiver Title	Target Population	2023 Enrollment Cap	Operating Unit	Concurrent Management Authority
LA Community Choices (0866.R01.00)	Individuals who are physically disabled ages 21 to 64, and individuals ages 65+	5,305	Office of Aging and Adult Services (OAAS)	None
Coordinated System of Care SED Children's Waiver (LA.0889.R01.00)	Individuals with serious emotional disturbance ages 5 to 17, and individuals with mental illness ages 18 to 20	5,557	Office of Behavioral Health	Yes, 1915 (b) waiver
LA Supports Waiver (0453.R02.00)	Individuals with autism or I/DD ages 18+	2,400	The Office for Citizens with Developmental Disabilities	None
LA Children's Choice CC Waiver (0361.R03.00)	Individuals with autism or I/DD ages 0 to 20	2,150	The Office for Citizens with Developmental Disabilities	None
LA Residential Options Waiver (ROW) (0472.R02.00)	Individuals of any age with autism or with I/DD	925	The Office for Citizens with Developmental Disabilities	None

## D.6. Medicaid Program: New Initiatives

- House Bill 1 of the 2018 Second Extraordinary Legislative Session reduced the Department of Health's budget by 20.9 million, which caused the state to decrease the reasonable compatibility standard from 25% to 10%, and for the state to start to use income tax data in the Medicaid eligibility determination process.
  - Since 2019, this has led to a decrease in spending by \$1.3 million dollars, and the removal of 151 participant applications who were no longer eligible.
- The state has partnered with the Women's Hospital in Baton Rouge to enact a grant awarded by CMS for Maternal Opioid Misuse.
  - This grant will allow the state to test if coordination and integration of clinical care along with other services can improve quality of care and reduce the costs of mothers and infants.
  - The state also intends to use this grant to expand access to care and infrastructure, and to create sustainable coverage and payment strategies.
- LDH is introducing five new and additional initiatives focused on the behavioral health of children and adolescents and their families.
- These initiatives, titled *Services from the Start: Providing Behavioral Health Support for Louisiana Families*, focus on improved access to early childhood, adolescent, and family behavioral health services.
  - Expanding substance use residential treatment facilities for women and dependent children
  - Implementing Early Childhood Supports and Services
  - Building the foundation for statewide youth crisis services
  - Treating trauma through the implementation for DBT programs
  - Cultivating PRTF services to treat youth with co-occurring developmental disabilities

# E. Dual Eligible Financing & Service Delivery System

# E.1. Dual Eligible Medicaid Financing & Service Delivery System

Dual Eligible* Medicaid System Characteristics		
Characteristics	Medicaid Fee-For-Service (FFS)	PACE
Enrollment (March 2021)	187,872	114
Estimated SMI Enrollment	60,119	36
Management	<ul style="list-style-type: none"> <li>Physical health and traditional behavioral health: Department of Health</li> <li>Specialty behavioral health: Four health plans</li> </ul>	Two non-profit organizations
Payment Model	<ul style="list-style-type: none"> <li>Physical health and traditional behavioral health: FFS</li> <li>Specialty behavioral health: Capitated rate</li> </ul>	Blended capitated rate
Geographic Service Area	Statewide	Greater New Orleans, Baton Rouge, and Lafayette area

**Total Dual Eligible Enrollment: 187,986 | Total Dual Eligible Enrollment With SMI: 60,155**

\*Unless otherwise noted, the term *dual eligibles* in this section refers to Medicare enrollees with full Medicaid benefits.

## E.2. Largest Dual Eligible Health Plans By Estimated SMI Enrollment

Health Plans	Parent Company	Plan Type	March 2023 Enrollment	Estimated SMI Enrollment
Humana Gold Plus	Humana, Inc	Medicare Advantage D-SNP	52,902	16,929
UnitedHealthcare Dual Complete	UnitedHealthcare	Medicare Advantage D-SNP	23,958	7,667
Peoples Health Secure Complete	Peoples Health, Inc	Medicare Advantage D-SNP	17,095	5,470
Peoples Health Secure Health	Peoples Health, Inc	Medicare Advantage D-SNP	15,496	4,959
Allwell Dual Medicare Essentials	Allwell	Medicare Advantage D-SNP	8,315	2,661
Aetna Medicare Dual Preferred	Aetna/ CVS Health	Medicare Advantage D-SNP	7,896	2,527
HumanaChoice	Humana, Inc	Medicare Advantage D-SNP	6,094	1,950
WellCare Dual Pinnacle Liberty	Centene/ WellCare Health Plans, Inc	Medicare Advantage D-SNP	4,413	1,412
Vantage Dual Plus	Blue Cross and Blue Shield of Louisiana	Medicare Advantage D-SNP	4,067	1,301
Healthy Blue Dual Advantage	Blue Cross and Blue Shield of Louisiana	Medicare Advantage D-SNP	3,519	1,126

## E.3. Dual Eligible Medicaid Financing & Delivery System: Overview

- Dual eligible enrollment as of March 2023 was 187,986.
- D-SNP enrollment as of March 2023 was 130,069, SMI enrollment for D-SNP was 49,019,
- Medicare covers most acute services (which may include psychiatric care), while Medicaid, the payer of last resort, covers long-term services and supports (LTSS) and non-physician behavioral health services.
- Dual eligible beneficiaries must enroll in one of the four Medicaid health plans in order to receive specialized behavioral health services.
  - The Healthy Louisiana plans provide dual eligibles with specialized behavioral health services and non-emergency medical transportation only. All other services are provided through the FFS system.

## E.4. Dual Eligible Medicaid Financing & Delivery System: New Initiatives

- Louisiana does not have any pending dual eligible initiatives or financial alignment initiatives with CMS at this time.

# F. Long-Term Services & Supports Financing & Service Delivery System

# F.1. LTSS Financing & Service Delivery System

Louisiana does not operate a MLTSS program

LTSS Medicaid System Characteristics	
Characteristics	Medicaid Managed Care
Enrollment	N/A
Estimated SMI Enrollment	N/A
Management	N/A
Payment Model	N/A
Geographic Service Area	N/A

**Total LTSS Enrollment: N/A | Total LTSS Enrollment With SMI: N/A**

\*Long-Term Services & Supports

# F.1. Medicaid LTSS Service Delivery System Enrollment By Eligibility Group

Population	Mandatory FFS Enrollment	Option To Enroll In FFS Or Managed Care	Mandatory Managed Care Enrollment
Disabled adults			X
Disabled children			X
Blind individuals			X
Aged individuals			X
Dual eligibles	X		
Individuals with I/DD	X		
Individuals residing in nursing homes	X		
Individuals residing in ICF/IDD	X		
Other HCBS Recipients	X		
Other populations			

## F.2. LTSS Medicaid Financing & Delivery System: Overview

- Louisiana does not offer MLTSS services and instead all individuals receive care through the FFS and managed care system.

## F.3. Medicaid LTSS Program: Health Benefits

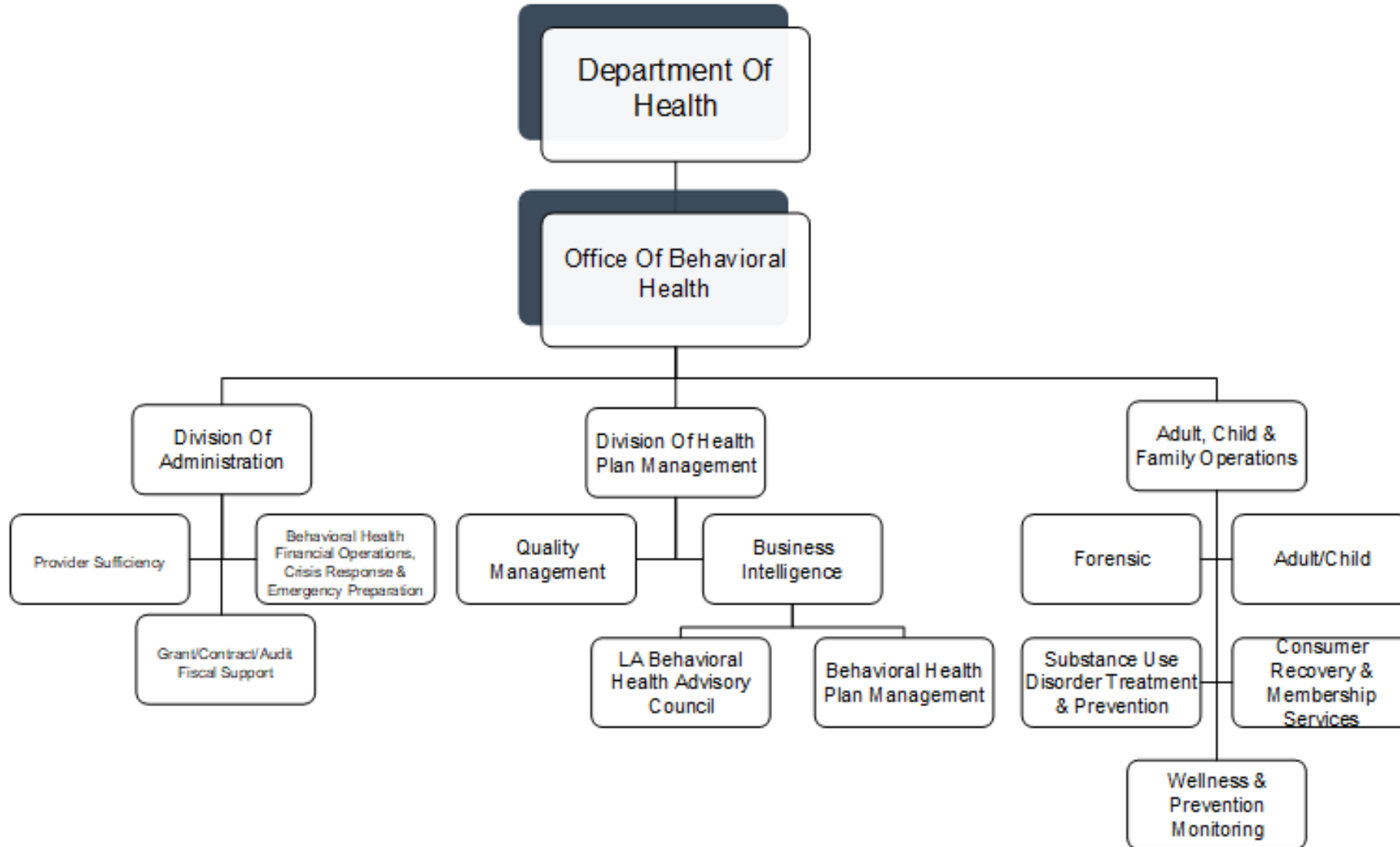
- Louisiana does not offer MLTSS services and instead all services are the same as the managed care and FFS programs.

## F.4. LTSS Medicaid Financing & Delivery System: New Initiatives

- Louisiana has no pending initiatives that will influence the finance or delivery systems of the LTSS population.

# G. State Behavioral Health Administration & Finance System

# G.1. Office Of Behavioral Health: Organization Chart



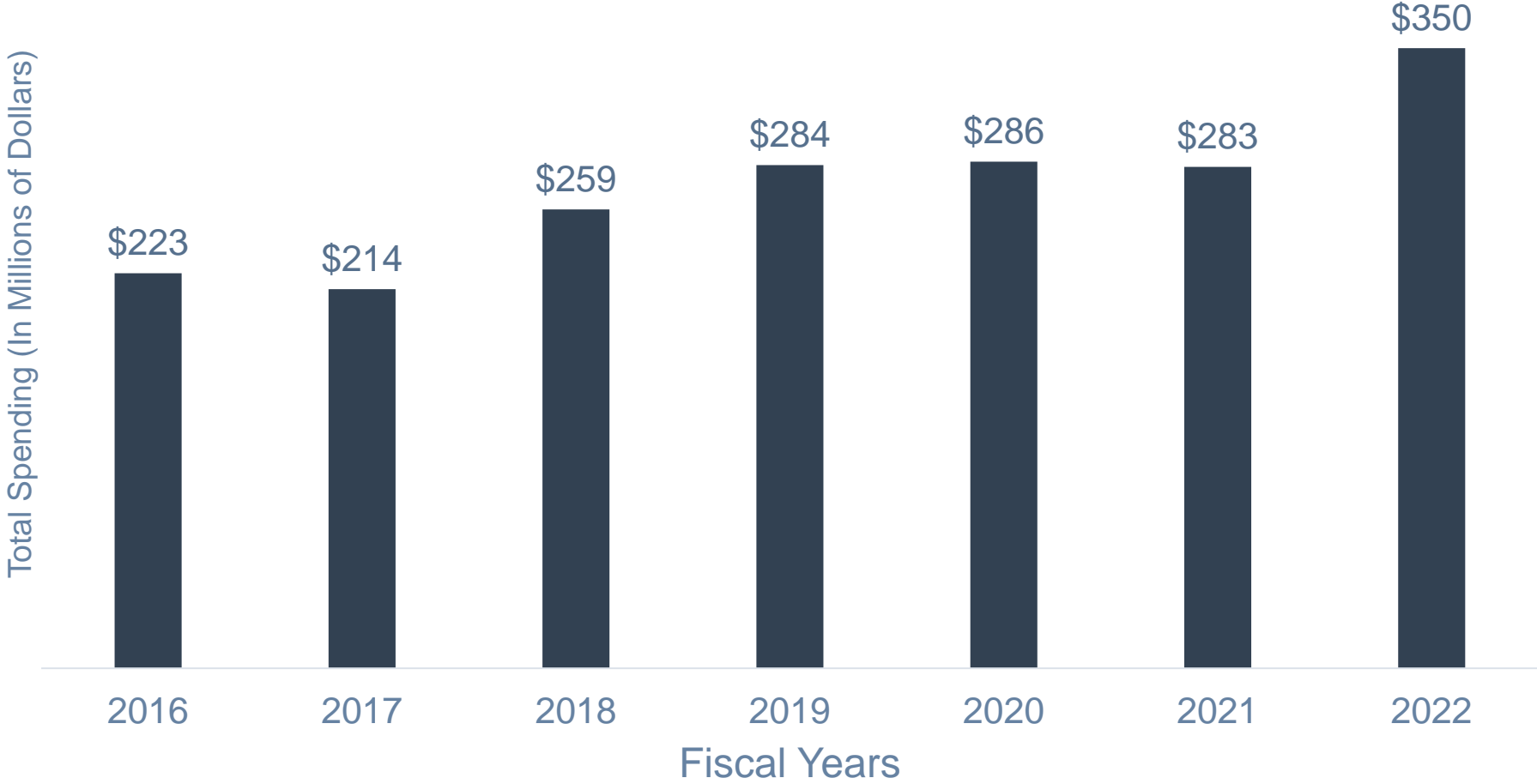
## G.1. Office Of Behavioral Health: Key Leadership

Name	Position	Department	Email
Courtney N. Phillips, M.D.	Secretary	Louisiana Department of Health (LDH)	courtney.phillips@la.gov
Pam Diez	Undersecretary	LDH	pam.diez@la.gov
Karen Stubbs Church, J.D.	Assistant Secretary	LDH, Office of Behavioral Health	karen.stubbs@la.gov
Amanda Joyner	Deputy Assistant Secretary	Office of Behavioral Health, Division of Administration	amanda.joyner@la.gov
Quinetta Womack, LPC, LAC-CCS, CCGC	Deputy Assistant Secretary	Office of Behavioral Health, Division of BH-Clinical/Community Programming	quinetta.womack@la.gov
Robyn McDermott, MS	Deputy Assistant Secretary	Office of Behavioral Health, Division of Health Plan Management	robyn.mcdermott@la.gov
James Hussey, M.D.	Medical Director	Office of Behavioral Health	james.hussey@la.gov

## G.2. Office Of Behavioral Health: Budget

Budget Item	SFY 2022-2023 Requested Budget	Percent Of Budget
Hospital based treatment	\$228,266,728	65%
Behavioral health administration and community oversight	\$121,939,322	35%
Auxiliary account	\$20,000	<1%
<b>Budget Total: \$350,226,050</b>		

# G.2. Office Of Behavioral Health: Budget Over Time



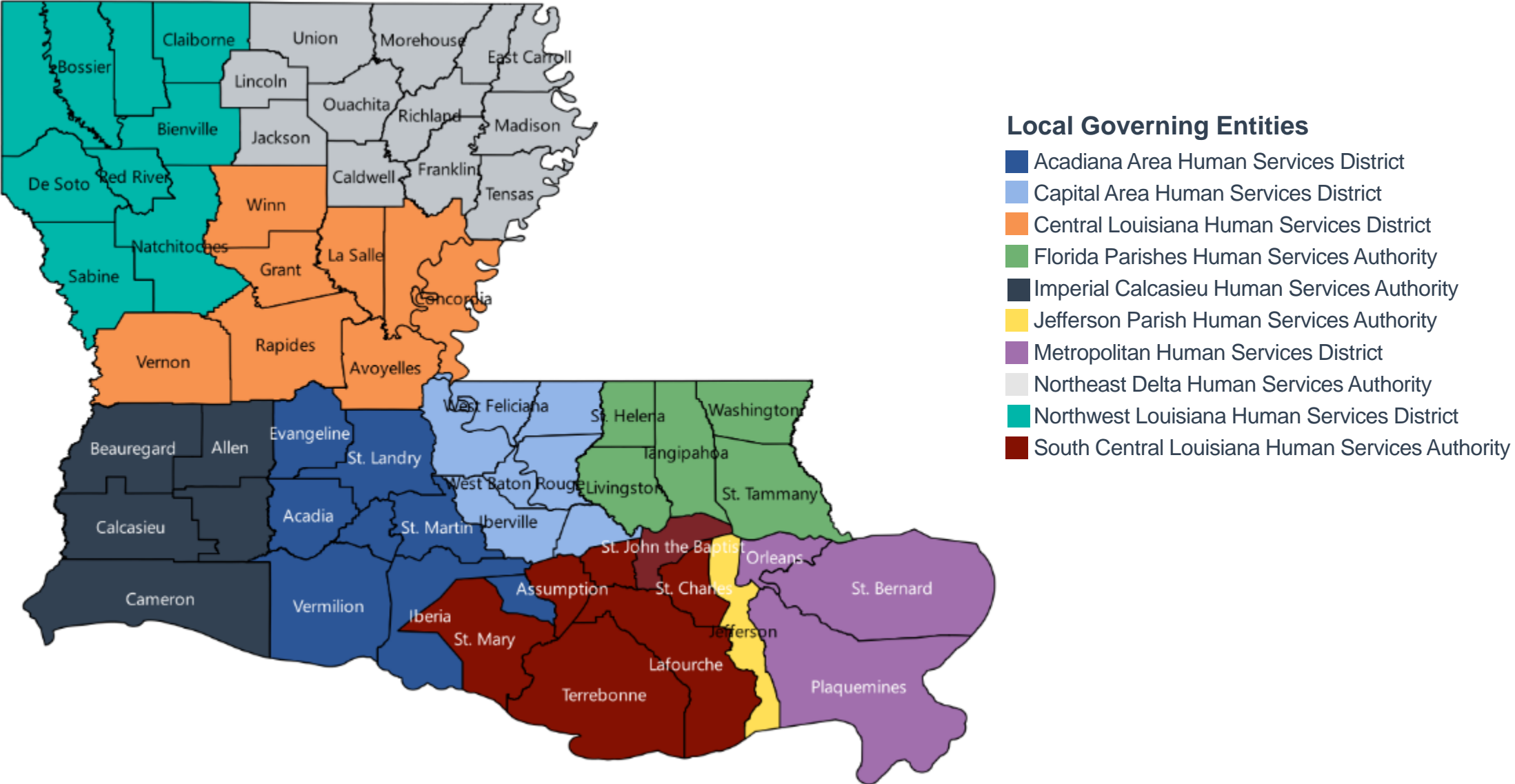
## G.3. State Psychiatric Institutions

State Psychiatric Institutions			
Institution	Location	Beds	Average Daily Census (2020-21)
Central Louisiana State Hospital	Pineville	120	115
Eastern Louisiana Mental Health System	Jackson	693	545
<b>Total</b>		<b>813</b>	<b>660</b>

## G.4. Behavioral Health Safety-Net Delivery System

- The Office of Behavioral Health within the Louisiana Department of Health (LDH) provides mental health and addiction disorder treatment services to the safety-net population through various financing and delivery arrangements with ten regional community behavioral health authorities called local governing entities (LGEs).
- The LGEs were established by the legislature and are governed by boards selected by the parish councils. Their creation was intended to decentralize the provision of behavioral health services away from LDH.
- The LGEs may provide services to the Medicaid-eligible population, along with the uninsured population.

# G.4. Behavioral Health Safety-Net Delivery System: LGE Regions



## G.4. Behavioral Health Safety-Net Delivery System: LGE Regions

Local Governing Entity	Parishes Served
Acadiana Area Human Services District	Acadia, Evangeline, Iberia, Lafayette, St. Landry, St. Martin, Vermilion
Capital Area Human Services District	Ascension, East Baton Rouge, East Feliciana, Iberville, Pointe Coupee, West Baton Rouge, West Feliciana
Central Louisiana Human Services District	Avoyelles, Catahoula, Concordia, Grant, La Salle, Rapides, Vernon, Winn
Florida Parishes Human Services Authority	Livingston, St. Helena, St. Tammany, Tangipahoa, Washington
Imperial Calcasieu Human Services Authority	Allen, Beauregard, Calcasieu, Cameron, Jefferson Davis
Jefferson Parish Human Services Authority	Jefferson
Metropolitan Human Services District	Orleans, Plaquemines, St. Bernard
Northeast Delta Human Services Authority	Caldwell, East Carroll, Franklin, Jackson, Lincoln, Madison, Morehouse, Ouachita, Richland, Tensas, Union, West Carroll
Northwest Louisiana Human Services District	Bienville, Bossier, Caddo, Claiborne, De Soto, Natchitoches, Red River, Sabine, Webster
South Central Louisiana Human Services Authority	Assumption, Lafourche, St. Charles, St. James, St. John The Baptist, St. Mary, Terrebonne

# H. Appendices

## H.1. OPEN MINDS Estimates For Share Of SMI Consumers Per Payer/Plan

Enrollment Category	Serious Mental Illness (SMI) Prevalence Estimate	Source
<b>Commercial</b>	4.1% of the commercially insured population over age 18	Substance Abuse and Mental Health Services Administration. (2022, January). Results from the 2020 National Survey on Drug Use and Health: Mental Health Detailed Tables. Retrieved December 2022 from <a href="https://www.samhsa.gov/data/sites/default/files/reports/rpt35323/NSDUHDetailedTabs2020v25/NSDUHDetailedTabs2020v25/2020NSDUHDetTabs01112022.zip">https://www.samhsa.gov/data/sites/default/files/reports/rpt35323/NSDUHDetailedTabs2020v25/NSDUHDetailedTabs2020v25/2020NSDUHDetTabs01112022.zip</a>
<b>Medicaid</b>	8.6% of individuals enrolled in traditional Medicaid	Substance Abuse and Mental Health Services Administration. (2022, January). Results from the 2020 National Survey on Drug Use and Health: Mental Health Detailed Tables. Retrieved December 2022 from <a href="https://www.samhsa.gov/data/sites/default/files/reports/rpt35323/NSDUHDetailedTabs2020v25/NSDUHDetailedTabs2020v25/2020NSDUHDetTabs01112022.zip">https://www.samhsa.gov/data/sites/default/files/reports/rpt35323/NSDUHDetailedTabs2020v25/NSDUHDetailedTabs2020v25/2020NSDUHDetTabs01112022.zip</a>
<b>Medicare</b>	16% of persons in the Medicare population, not dually eligible for Medicaid	Centers for Medicare and Medicaid Services. (2021). Medicare-Medicaid Coordination Office Report to Congress. Retrieved January 2023 from <a href="https://www.cms.gov/files/document/mmco-report-congress.pdf">https://www.cms.gov/files/document/mmco-report-congress.pdf</a>

## H.1. OPEN MINDS Estimates For Share Of SMI Consumers Per Payer/Plan

Enrollment Category	Serious Mental Illness (SMI) Prevalence Estimate	Source
Medicare-Medicaid Dual Eligibility	25% of persons in the Medicare population dually eligible for partial Medicaid benefits	Congressional Budget Office. (2013, June). Dual-Eligible Beneficiaries of Medicare and Medicaid: Characteristics, Health Care Spends, and Evolving Policies. Retrieved December 2022 from <a href="https://www.cbo.gov/sites/default/files/113th-congress-2013-2014/reports/44308_DualEligibles2.pdf">https://www.cbo.gov/sites/default/files/113th-congress-2013-2014/reports/44308_DualEligibles2.pdf</a>
	32% of persons in the Medicare population dually eligible for full Medicaid benefits	U.S. Department of Health and Human Services. (2019, May 9). Analysis of Pathways to Dual Eligible Status: Final Report. Retrieved December 2022 from <a href="https://aspe.hhs.gov/basic-report/analysis-pathways-dual-eligible-status-final-report">https://aspe.hhs.gov/basic-report/analysis-pathways-dual-eligible-status-final-report</a>
Other Public	5.6% of persons served by the Veterans Administration health care system or the TRICARE military health system	Military Health Systems. (2020, August). Examination of Mental Health Accession Screening: Predictive Value of Current Measures and Report Processes. Retrieved December 2022 from <a href="https://www.health.mil/Reference-Center/Presentations/2019/11/04/Examination-of-Mental-Health-Accession-Screening-Update">https://www.health.mil/Reference-Center/Presentations/2019/11/04/Examination-of-Mental-Health-Accession-Screening-Update</a>
No Health Care Insurance	6.2% of uninsured persons over age 18	Substance Abuse and Mental Health Services Administration. (2022, January). Results from the 2020 National Survey on Drug Use and Health: Mental Health Detailed Tables. Retrieved December 2022 from <a href="https://www.samhsa.gov/data/sites/default/files/reports/rpt35323/NSDUHDetailedTabs2020v25/NSDUHDetailedTabs2020v25/2020NSDUHDetailedTabs01112022.zip">https://www.samhsa.gov/data/sites/default/files/reports/rpt35323/NSDUHDetailedTabs2020v25/NSDUHDetailedTabs2020v25/2020NSDUHDetailedTabs01112022.zip</a>

## H.2. Glossary Of Terms

Term	Abbreviation	Definition
<b>Alternative Benefit Plan</b>	ABP	State designed benefit package for the Medicaid expansion population (childless adults with income below 138% of the FPL). The benefit package must include the ten essential benefits as laid out in the PPACA. The Medicaid expansion population deemed medically frail (including those with SMI) are exempt from receiving benefits through the ABP.
<b>Accountable Care Organizations</b>	ACO	ACOs are groups of provider organizations—such as physicians and hospital systems—that form an agreement to coordinate care for a set group of individuals. If the ACO delivers high quality care—measured through performance metrics—and lowers the cost of providing care against a baseline, then the organization receives a portion of the savings generated. ACOs can exist alongside all payment structures (fee-for-service and managed care delivery systems) and payers (Medicare, Medicaid, commercial).
<b>Administrative Services Organization</b>	ASO	An arrangement in which an organization hires a third party to deliver administrative services to the organization, such as claims processing and billing. The ASO is not at-risk.
<b>Capitation</b>		A set amount of money paid per enrollee per month to a health care entity to cover the cost of health care services. Capitation can cover the cost of all health care services or subset of services, such as care coordination or home- and community-based services.
<b>Carve-out</b>		A carve-out is a Medicaid managed care financing model where some portion of Medicaid benefits—dental services, pharmacy services, behavioral health services, etc.—are separately managed and/or financed. Carve-out services can be financed on an at-risk basis by another organization or retained by the state Medicaid agency on a fee-for-service basis.
<b>Certified Community Behavioral Health Clinic</b>	CCBHC	Behavioral health clinics specially certified in a demonstration established by section 223 of the Protecting Access to Medicare Act of 2014. The clinics are designed to provide community-based mental health and addiction treatment services, to advance the integration of behavioral health with physical health care, and to provide care coordination across the full spectrum of health services.

## H.2. Glossary Of Terms

Term	Abbreviation	Definition
<b>Community Mental Health Center</b>	CMHC	An organization that can demonstrate that it is actively providing all services in section 1913(c)(1) of the Public Health Services Act, including a.) Outpatient services, including specialized outpatient services for children, the elderly, individuals who are chronically mentally ill, and residents of the CMHC’s mental health service area who have been discharged from inpatient treatment at a mental health facility; b.) 24 hour-a-day emergency care services; c.) Day treatment, or other partial hospitalization services, or psychosocial rehabilitation services; and d.) Screening for patients being considered for admission to state mental health facilities to determine the appropriateness of such admission. Additionally, the organization must meet the specifications for the state where it provides services.
<b>Dual Eligible</b>		An individual who is eligible for Medicare (Part A and B) and Medicaid. Medicare serves as the individual's primary insurance, and Medicaid acts as a supplement. Dual eligibles are sometimes referred to as Medicare-Medicaid enrollees (MMEs).
<b>Federal Poverty Level</b>	FPL	The U.S. Department of Health and Human Services sets a standard level of income that is used to determine eligibility for services and benefits, including Medicaid. In 2023, the FPL is \$13,590 for an individual and \$27,750 for a family of four.
<b>Fee-For-Service</b>	FFS	A system where the payer, in this case Medicaid, contracts directly with provider organizations and pays for providing care on a unit-by-unit basis. Health plans may also reimburse provider organizations on a FFS basis meaning they pay for each unit of care or test.
<b>Health Home</b>		A “whole person” care coordination model that specifically targets populations with chronic conditions including those with SMI. Health homes provide six essential functions: 1.) Comprehensive care management; 2.) Care coordination and health promotion; 3.) Comprehensive transitional care from inpatient to other settings, including appropriate follow-up; 4.) Individual and family support; 5.) Referral to community and social support services; 6.) Use of health information technology to link services. Health homes were originally developed as a Medicaid program, but have been adopted by other payers. For a state to have an official health home program they must have an approved state plan amendment.

## H.2. Glossary Of Terms

Term	Abbreviation	Definition
<b>Health Insurance Marketplace</b>	HIM	Created by the PPACA, the health insurance marketplace is an online platform where individuals and small businesses can purchase health insurance. The federal government subsidizes coverage purchased on the marketplace through premium tax credits for individuals with income up to 400% of the FPL.
<b>Home- &amp; Community-Based Services</b>	HCBS	Long-term services and supports provided in the home or community in order to avoid institutionalization. Traditionally provided through 1915(c) waivers, HCBS services are usually limited to specific populations and a specific number of people. HCBS services include skilled nursing care, personnel care services, assistance with activities of daily living, and custodial care.
<b>Institutions For Mental Disease</b>	IMD	A hospital, nursing facility, or other institution of more than 16 beds that is primarily engaged in providing diagnosis, treatment, or care of persons with mental diseases, including addiction. Federal financial participation is available for Medicaid IMD services for individuals under the age of 21 and age 65 and over. In recent years, CMS has relaxed the rules prohibiting payments in IMDs for individuals age 21-64. Medicaid health plans may provide up to 15 days of IMD services per month in lieu of state plan services if medically appropriate, cost effective, and consented to by the individual. Additionally, states may be granted a 1115 waiver authority to allow individuals to receive addiction and mental health treatment in IMDs.
<b>Long-Term Services &amp; Supports</b>	LTSS	Services provided in the home, community, or institutional setting to those who experience difficulty living independently and completing activities of daily living as a result of cognitive disabilities, physical impairments, disabling chronic conditions, and/or age.
<b>Managed Care</b>		A health care delivery and financing system designed to manage cost, utilization, and quality. In Medicaid, states generally implement managed care through contracts with health plans, which provide a limited set of benefits to enrollees through a capitated or per person per month (PMPM) rate. The health plans generally assumes full-risk for the cost of treatment, and therefore contracts with a network of provider organizations to provide care at the most efficient rate possible while still maintaining member health.

## H.2. Glossary Of Terms

Term	Abbreviation	Definition
<b>Medicaid</b>		Medicaid is a joint federal-state program that provides health coverage to economically disadvantaged populations, such as low-income adults, children, and aged, blind, and disabled (ABD) individuals. States establish their own eligibility standards, benefit packages, provider payment policies, and administrative structures under broad federal guidelines. Financing is a shared responsibility of the federal government and the states.
<b>Medicaid Waiver</b>		Granted by CMS, waivers allow states to make temporary changes to their Medicaid program in order to test out new ways to deliver health coverage.
<b>Medicaid Waiver Section 1115</b>	1115 waiver	Known as research and demonstration waivers, states can apply for program flexibility to test new or existing approaches to financing and delivering Medicaid and CHIP.
<b>Medicaid Waiver Section 1915(b)</b>	1915(b) waiver	States can apply for waivers to provide services through managed care delivery systems, or otherwise limit an individual's choice of health plan or provider organization.
<b>Medicaid Waiver Section 1915(c)</b>	1915(c) waiver	States can apply for waivers to provide long-term care services in home- and community-based settings, rather than institutional settings.
<b>Medical Home</b>		A medical home is not a physical place, but a model for care coordination. Medical homes provide primary care services, care coordination, enhanced access to care, and care that is culturally and linguistically appropriate. Medical homes exist across multiple payers.
<b>Medicare</b>		Federal health insurance for individuals over the age of 65, individuals with certain disabilities, and individuals with end stage renal disease. Medicare covers most acute care services (which may include psychiatric care) but does not cover LTSS or non-physician behavioral health services.
<b>Medicare Advantage</b>	MA	Medicare Part C - also known as Medicare Advantage - is a program which allows individuals who are eligible for Medicare Parts A and B to elect a private health plan to provide their Medicare coverage. The federal government pays the plan's premiums up to a set level, and individuals are responsible for the difference.

## H.2. Glossary Of Terms

Term	Abbreviation	Definition
Medicare Advantage Special Needs Plan	SNP	A special type of Medicare Advantage plan that is designed to provide targeted coordinated care to individuals who are a) institutionalized; b) dual eligible; and/or c) meet the severe chronic disabled conditions set forth by CMS. Plans emphasize improved care primarily through continuity of care and care coordination.
Medicare Part A		Hospital Insurance: Covers hospital, skilled nursing care, hospice, and home health care for most eligible individuals at no cost. Financed through payroll tax and deductibles, copayments are only charged if a stay becomes long-term.
Medicare Part B		Supplementary Medical Insurance: Covers most outpatient services, and consumers pay a premium based on income level.
Medicare Part C		Medicare Part C - also known as Medicare Advantage - is a program which allows individuals who are eligible for Medicare Parts A and B to elect a private health plan to provide their Medicare coverage. The federal government pays the plan's premiums up to a set level, and individuals are responsible for the difference.
Medicare Part D		Outpatient Prescription Drug Benefit: Private plans contract with Medicare to provide coverage for prescription drugs. Most consumers pay premiums based on their income.
Metropolitan Statistical Area	MSA	An urbanized area with a population of at least 50,000 plus adjacent territory that has a high degree of social and economic integration as measured by commuting ties.
Patient-Centered Medical Home	PCMH	See Medical Home.
Patient Protection & Affordable Care Act	PPACA or ACA	U.S. health care reform signed into law in 2010. The legislation regulates certain aspects of private and public health insurance programs and authorizes an individual mandate to secure essential health coverage, premium tax credits for the purchase of private health insurance, and increased insurance coverage of preexisting conditions. In 2012 the Supreme Court ruled that state participation is optional for provisions of the law expanding Medicaid coverage to adults ages 18 to 64 with incomes under 138% of the FPL. In 2017, Congress repealed the tax penalties associated with the individual mandate essentially ending the mandate.

## H.2. Glossary Of Terms

Term	Abbreviation	Definition
<b>Primary Care Case Management</b>	PCCM	A health care delivery system model with limited utilization and cost control. Under the PCCM model, Medicaid enrollees choose a primary care physician who acts as a gatekeeper for more intensive services. The primary care physician generally receives a per person per month (PMPM) fee for care coordination and is reimbursed fee-for-service for all medical services provided.
<b>Program Of All Inclusive Care For The Elderly</b>	PACE	PACE serves populations over the age of 55 who are eligible for skilled nursing home care by utilizing a comprehensive delivery system of social, medical, and long-term care services to keep enrollees in the community for as long as possible. PACE is an optional state Medicaid program, and may only be available in certain states, or regions within states.
<b>Serious Mental Illness</b>	SMI	A mental, behavioral, or emotional disorder that lasts for a sufficient duration of time and causes impairment of major life activities. Serious mental illnesses include major depression, schizophrenia, bipolar disorder, obsessive compulsive disorder (OCD), panic disorder, post traumatic stress disorder (PTSD), and borderline personality disorder.
<b>Supported Employment</b>		Provides services and supports to help individuals with disabilities become employed in an integrated or competitive work environment and retain that employment.
<b>Supported Housing</b>		Housing provided for as long as needed at little or no cost to individuals with mental illness, or other vulnerable populations who are homeless or at-risk for homelessness. Mental health and social services are offered to participants but are not a condition for participation in the program. The goal is to allow individuals to live as self-sufficient, independent lives as possible.
<b>Value-Based Reimbursement</b>	VBR	Reimbursement model in which payers financially reward or penalize health care provider organizations for performance on quality and cost of care. VBR payment mechanisms include P4P; capitation; shared savings models; shared risk models; and payments based on clinically-defined episodes, called episodes of care or bundled payments.

## H.3. Sources

### A. Executive Summary

1. Information compiled from sources provided throughout the profile.

### B.1. Population Demographics

1. United States Census Bureau. (2022). 2023 American Community Survey 1-Year Estimates S0101 Population By Age and Sex. Retrieved May 2023 from <https://data.census.gov/cedsci/table?q=S0101>
2. United States Census Bureau. (2022). 2023 Current Population Survey Annual Social and Economic Supplement POV-46 Poverty Status By State. Retrieved May 2023 from <https://data.census.gov/cedsci/table?q=S1701>
3. United States Census Bureau. (2022). 2023 American Community Survey 1-Year Estimates S1901 Median Income In the Past 12 Months. Retrieved May 2023 from <https://data.census.gov/cedsci/table?q=S1901>
4. United States Census Bureau. (2022). 2023 Population Distribution by Race/Ethnicity. Retrieved May 2023 from <https://data.census.gov/cedsci/table?q=DP05&tid=ACSDP5Y2020.DP05>

### B.2. Population Centers

1. Federal Reserve Bank of St Louis. (2022, March) US Regional Data, MSAs. Retrieved January 2023 from <https://fred.stlouisfed.org>
2. U.S. Census Bureau. (2021). 2021 TIGER/Line® Shapefiles: Core Based Statistical Areas. Retrieved May 2023 from <https://www.census.gov/cgi-bin/geo/shapefiles/index.php?year=2021&layergroup=Core+Based+Statistical+Areas>
3. U.S. Census Bureau. (2020). 2019 TIGER/Line® Shapefiles: Core Based Statistical Areas. Retrieved May 2023 from <https://www.census.gov/cgi-bin/geo/shapefiles/index.php?year=2019&layergroup=Core+Based+Statistical+Areas>
4. U.S. Census Bureau. (2020). 2019 TIGER/Line® Shapefiles: States (and equivalent). Retrieved May 2023 from <https://www.census.gov/cgi-bin/geo/shapefiles/index.php?year=2019&layergroup=States+%28and+equivalent%29>
5. United States Census Bureau. (2020). 2019 Annual Estimates of Residential Population-Metropolitan and Micropolitan Statistical Area GCT-PEPANNRES. Retrieved May 2023 from <https://www.census.gov/data/tables/time-series/demo/popest/2010s-total-metro-and-micro-statistical-areas.html>

### B.3. Population Distribution By Payer: National vs. State

1. OPEN MINDS. (2023). Serious Mental Illness Prevalence Estimates.
2. Tricare, 2022 Beneficiaries. Retrieved May 2023. <https://www.health.mil/I-Am-A/Media/Media-Center/Patient-Population-Statistics/Patient-Numbers-By-State>
3. CMS, MMCO Statistical & Analytic Reports, Quarterly Release (January 2023). Retrieved May 2023. <https://www.cms.gov/Medicare-Medicaid-Coordination/Medicare-and-Medicaid-Coordination/Medicare-Medicaid-Coordination-Office/Analytics>
4. Kaiser Family Foundation, Health Coverage & Uninsured, Health Insurance Coverage of the Total Population (2020). Retrieved May 2023. <https://www.kff.org/other/state-indicator/health-insurance-coverage-of-the-total-population-cps/?dataView=1&currentTimeframe=0&sortModel=%7B%22colId%22:%22Location%22,%22sort%22:%22asc%22%7D>

## H.3. Sources

### B.3. SMI Population Distribution By Payer: National vs. State

1. *OPEN MINDS*. (2023). Serious Mental Illness Prevalence Estimates.

### B.4. Largest State Health Plans By Enrollment

1. *OPEN MINDS*. (2023, March). Health Plans Database.
2. Tricare, 2022 Beneficiaries. Retrieved May 2023. <https://www.health.mil/I-Am-A/Media/Media-Center/Patient-Population-Statistics/Patient-Numbers-By-State>
3. Health Plans USA. (2023). Subscription Database. Available from <http://www.markfarrah.com/>

### B.4. Largest Louisiana Health Plans By Estimated SMI Enrollment

1. *OPEN MINDS*. (2023, March). Health Plans Database.
2. Tricare, 2022 Beneficiaries. Retrieved May 2023. <https://www.health.mil/I-Am-A/Media/Media-Center/Patient-Population-Statistics/Patient-Numbers-By-State>
3. Health Plans USA. (2023). Subscription Database. Available from <http://www.markfarrah.com/>

### B.5. Health Insurance Marketplace

1. United States Department of Health and Human Services. (2021, October 21). PY2022 Individual Medical Landscape. Retrieved May 2023 from <https://data.healthcare.gov/dataset/cfbdbdd9-b405-4c4a-b679-fd2986945b88>
2. United States Department of Health and Human Services. (2021, October 21). QHP Landscape PY2022 SHOP Market Medical. Retrieved May 2023 from <https://data.healthcare.gov/dataset/aa2cf0c7-ff39-484a-9472-764e243ffea9>
3. Health Insurance. (2021, April 5). Louisiana health Insurance Marketplace: History and News of the State's Exchange. Retrieved May 2023 from <https://www.healthinsurance.org/health-insurance-marketplaces/louisiana/>

### B.6. ACOs

1. *OPEN MINDS*. (2022). ACO Database.

### C.1. Medicaid Governance: Organizational Chart

1. Louisiana Department of Health. (2021, March 01). Department of Health Organizational Chart. Retrieved May 2023 from <http://ldh.la.gov/assets/docs/OrgCharts/LDHOrgChart.pdf>

## H.3. Sources

### C.1. Medicaid Governance: Key Leadership

1. Louisiana Department of Health. (2021, March 01). Department of Health Organizational Chart. Retrieved May 2023 from <http://ldh.la.gov/assets/docs/OrgCharts/LDHOrgChart.pdf>
2. Louisiana Department of Health. (2020, October 2). Medicaid Leadership. Retrieved May 2023 from <http://ldh.la.gov/assets/docs/OrgCharts/Medicaid-OrgChart.pdf>

### C.2. Medicaid Program Spending By Eligibility Group

1. Centers for Medicare and Medicaid Services. (2022, December). MACStats: Medicaid and CHIP Data Book. Retrieved May 2023 from <https://www.macpac.gov/macstats/>
2. Centers for Medicare and Medicaid Services. (2021, December). MACStats: Medicaid and CHIP Data Book. Retrieved May 2023 from <https://www.macpac.gov/macstats/>

### C.2. Medicaid Program Spending: Budget

1. United States Government Printing Office. (2018, November 28). Federal Medical Assistance Percentages FY 2020. Retrieved May 2023 from <https://www.federalregister.gov/documents/2018/11/28/2018-25944/federal-financial-participation-in-state-assistance-expenditures-federal-matching-shares-for>
2. Centers for Medicare and Medicaid Services. (2022, December). MACStats: Medicaid and CHIP Data Book. Retrieved May 2023 from <https://www.macpac.gov/macstats/>
3. Centers for Medicare and Medicaid Services. (2013, March 29). Increased Federal Medical Assistance Percentage Through the Affordable Care Act of 2010. Retrieved May 2023 from <https://www.cms.gov/Newsroom/MediaReleaseDatabase/Fact-sheets/2013-Fact-sheets-items/2013-03-29.html>

### C.2. Medicaid Program Spending: Change Over Time

1. Centers for Medicare and Medicaid Services. (2022, December). MACStats: Medicaid and CHIP Data Book. Retrieved May 2023 from <https://www.macpac.gov/macstats/>
2. Centers for Medicare and Medicaid Services. (2021, December). MACStats: Medicaid and CHIP Data Book. Retrieved May 2023 from <https://www.macpac.gov/macstats/>
3. Centers for Medicare and Medicaid Services. (2020, December). MACStats: Medicaid and CHIP Data Book. Retrieved May 2023 from <https://www.macpac.gov/macstats/>
4. Medicaid and CHIP Payment and Access Commission. (2019, December). MACStats: Medicaid and CHIP Data Book. Retrieved May 2023 from <https://www.macpac.gov/wp-content/uploads/2018/12/December-2018-MACStats-Data-Book.pdf>
5. Medicaid and CHIP Payment and Access Commission. (2018, December). MACStats: Medicaid and CHIP Data Book. Retrieved May 2023 from <https://www.macpac.gov/publication/macstats-archive/>
6. Medicaid and CHIP Payment and Access Commission. (2017, December). MACStats: Medicaid and CHIP Data Book. Retrieved May 2023 from <https://www.macpac.gov/publication/macstats-archive/>
7. Medicaid and CHIP Payment and Access Commission. (2016, March). MACStats: Medicaid and CHIP Program Statistics. Retrieved May 2023 from <https://www.macpac.gov/publication/macstats-archive/>

## H.3. Sources

### C.3. Medicaid Expansion Status

1. Centers for Medicare and Medicaid Services. (2022, December). MACStats: Medicaid and CHIP Data Book. Retrieved May 2023 from <https://www.macpac.gov/macstats/>
2. Centers for Medicare and Medicaid Services. (2021, December). MACStats: Medicaid and CHIP Data Book. Retrieved May 2023 from <https://www.macpac.gov/macstats/>
3. Centers for Medicare and Medicaid Services. (2022, January). Medicaid Enrollment Data Collected Through MBES 2023 Q1. Retrieved May 2023 from <https://www.medicaid.gov/medicaid/program-information/medicaid-and-chip-enrollment-data/enrollment-mbes/index.html>
4. Centers for Medicare and Medicaid Services. (2020, October). Medicaid, Children’s Health Insurance Program & Basic Health Program Eligibility Levels. Retrieved May 2023 from <https://www.medicaid.gov/medicaid/program-information/medicaid-and-chip-eligibility-levels/index.html>
5. US Government Publishing Office. (2011, October 1). Code of Federal Regulations Title 42. Retrieved May 2023 from <https://www.gpo.gov/fdsys/granule/CFR-2011-title42-vol4/CFR-2011-title42-vol4-sec440-315>
6. Centers for Medicare and Medicaid Services. (2016). Medicaid State Plan Amendment Louisiana 16-0005. Retrieved May 2023 from <https://www.medicaid.gov/State-resource-center/Medicaid-State-Plan-Amendments/Downloads/LA/LA-16-0005.pdf>

### C.4. Medicaid Program Benefits

1. Medicaid and CHIP Payment and Access Commission. Mandatory and Optional Benefits. Retrieved May 2023 from <https://www.macpac.gov/subtopic/mandatory-and-optional-benefits/>
2. Louisiana Department of Health. Medicaid State Plan. Retrieved May 2023 from <http://ldh.la.gov/index.cfm/page/1718>

### D.1. Medicaid Financing & Service Delivery System

1. Information derived from sources found throughout Section D.

### D.1. Medicaid Service Delivery System Enrollment By Eligibility Group

1. Centers for Medicare and Medicaid Services. (2018, August 28). Louisiana Bayou Health and Coordinated System of Care (LA-04). Retrieved May 2023 from <https://www.medicaid.gov/medicaid/section-1115-demo/demonstration-and-waiver-list/?entry=24334>
2. Centers for Medicare and Medicaid Services. (2016). Medicaid State Plan Amendment Louisiana 16-0003. Retrieved May 2023 from <https://www.medicaid.gov/State-resource-center/Medicaid-State-Plan-Amendments/Downloads/LA/LA-16-0003.pdf>

## H.3. Sources

### D.2. Medicaid FFS Program: Behavioral Health Overview

1. Centers for Medicare and Medicaid Services. (2018, February 1). Healthy Louisiana and CSoC Waiver. Retrieved May 2023 from [https://www.medicaid.gov/Medicaid-CHIP-Program-Information/By-Topics/Waivers/Downloads/LA\\_LBHP\\_LA-04.pdf](https://www.medicaid.gov/Medicaid-CHIP-Program-Information/By-Topics/Waivers/Downloads/LA_LBHP_LA-04.pdf)
2. Louisiana Department of Health. (2017, September 1). Informational Bulletin 15-13. Retrieved May 2023 from [http://ldh.la.gov/assets/docs/BayouHealth/Informational\\_Bulletins/15-13/IB15-13\\_revised\\_9.1.17.pdf](http://ldh.la.gov/assets/docs/BayouHealth/Informational_Bulletins/15-13/IB15-13_revised_9.1.17.pdf)
3. Louisiana Department of Health. Managed Care Executed Contracts. Retrieved May 2023 from <http://ldh.la.gov/index.cfm/page/1763>
4. Centers for Medicare and Medicaid Services. (2019, March 26). Medicaid State Plan Amendment Louisiana 18-0025. Retrieved May 2023 from <https://www.medicaid.gov/State-resource-center/Medicaid-State-Plan-Amendments/Downloads/LA/LA-18-0025.pdf>
5. Louisiana Department of Health. (2020, May 5). CSoC Amendment Posted for Public Comment. Retrieved May 2023 from <http://ldh.la.gov/index.cfm/newsroom/detail/5574>
6. Louisiana Department of Health. (2019, May 8). PROACT Contract Certification of Approval. Retrieved May 2023 from [http://www.ldh.la.gov/assets/csoc/RFP/2000391692\\_Magellan\\_Health\\_Approved\\_Contract.pdf](http://www.ldh.la.gov/assets/csoc/RFP/2000391692_Magellan_Health_Approved_Contract.pdf)

## H.3. Sources

### D.2. Medicaid FFS Program: Behavioral Health Benefits

1. Louisiana Department of Health. Managed Care Executed Contracts. Retrieved May 2023 from <http://ldh.la.gov/index.cfm/page/1763>
2. Centers for Medicare and Medicaid Services. (2019, June 19). Healthy Louisiana OUD/SUD Demonstration. Retrieved May 2023 from <https://www.medicaid.gov/medicaid/section-1115-demo/demonstration-and-waiver-list/?entry=45424>
3. Louisiana Department of Health. (2019, December 30). Amerihealth Caritas Louisiana Contract. Retrieved May 2023 from [http://ldh.la.gov/assets/docs/BayouHealth/Contract\\_Amendments/2019Contracts/ACLA\\_Contract.pdf](http://ldh.la.gov/assets/docs/BayouHealth/Contract_Amendments/2019Contracts/ACLA_Contract.pdf)
4. Louisiana Department of Health. (2019, December 30). Aetna Better Health Contract. Retrieved May 2023 from [http://ldh.la.gov/assets/docs/BayouHealth/Contract\\_Amendments/2019Contracts/ABH\\_Contract.pdf](http://ldh.la.gov/assets/docs/BayouHealth/Contract_Amendments/2019Contracts/ABH_Contract.pdf)
5. Louisiana Department of Health. (2019, December 30). Healthy Blue Contract. Retrieved May 2023 from [http://ldh.la.gov/assets/docs/BayouHealth/Contract\\_Amendments/2019Contracts/HBL\\_Contract.pdf](http://ldh.la.gov/assets/docs/BayouHealth/Contract_Amendments/2019Contracts/HBL_Contract.pdf)
6. Louisiana Department of Health. (2019, December 30). Louisiana Healthcare Connections Contract. Retrieved May 2023 from [http://ldh.la.gov/assets/docs/BayouHealth/Contract\\_Amendments/2019Contracts/LHCC\\_Contract.pdf](http://ldh.la.gov/assets/docs/BayouHealth/Contract_Amendments/2019Contracts/LHCC_Contract.pdf)
7. Louisiana Department of Health. (2019, December 30). UnitedHealthcare of Louisiana Contract. Retrieved May 2023 from [http://ldh.la.gov/assets/docs/BayouHealth/Contract\\_Amendments/2019Contracts/UHC\\_Contract.pdf](http://ldh.la.gov/assets/docs/BayouHealth/Contract_Amendments/2019Contracts/UHC_Contract.pdf)
8. Louisiana Department of Health. (2021, March 16). State Plan Amendment #20-0015. Retrieved May 2023 from <https://www.medicaid.gov/medicaid/spa/downloads/LA-20-0015.pdf>
9. <https://www.medicaid.gov/medicaid/spa/downloads/LA-20-0015.pdf>

### D.2. Medicaid FFS Program: SMI Population

1. Centers for Medicare and Medicaid Services. (2018, February 1). Healthy Louisiana and CSoC Waiver. Retrieved May 2023 from [https://www.medicaid.gov/Medicaid-CHIP-Program-Information/By-Topics/Waivers/Downloads/LA\\_LBHP\\_LA-04.pdf](https://www.medicaid.gov/Medicaid-CHIP-Program-Information/By-Topics/Waivers/Downloads/LA_LBHP_LA-04.pdf)
2. Centers for Medicare and Medicaid Services. (2016). Medicaid State Plan Amendment Louisiana 16-0003. Retrieved May 2023 from <https://www.medicaid.gov/State-resource-center/Medicaid-State-Plan-Amendments/Downloads/LA/LA-16-0003.pdf>
3. OPEN MINDS. (2023). SMI Estimates.

### D.2. Medicaid FFS Program: Overview

1. Louisiana Department of Health. (2021, April 1). Enrollment Trend Report. Retrieved May 2023 from [https://ldh.la.gov/assets/docs/BayouHealth/Monthly\\_Reports/2021\\_109A/109A-EnrollmentsbyHealthPlanandParish2.1April2021.pdf](https://ldh.la.gov/assets/docs/BayouHealth/Monthly_Reports/2021_109A/109A-EnrollmentsbyHealthPlanandParish2.1April2021.pdf)

## H.3. Sources

### D.2. Medicaid FFS Program: Pharmacy Benefits

1. Louisiana Department of Health. (2021, January 1). Louisiana Medicaid Preferred Drug List (PDL)/Non-Preferred Drug List (NPDL). Retrieved May 2023 from <http://www.ldh.la.gov/assets/HealthyLa/Pharmacy/PDL.pdf>
2. Louisiana Department of Health. Medicaid Pharmacy Benefits Management. Retrieved May 2023 from <http://ldh.la.gov/index.cfm/page/240>
3. Louisiana Department of Health. (2020, May 27). Pharmacy Benefits Management Services Manual. Retrieved May 2023 from <https://www.lamedicaid.com/provweb1/Providermanuals/manuals/PHARMACY/PHARMACY.pdf>
4. Louisiana Department of Health. Preventing Fraud-Recipients. Retrieved May 2023 from [https://medicaid.alabama.gov/content/8.0\\_Fraud/8.4\\_Preventing\\_Recipients.aspx](https://medicaid.alabama.gov/content/8.0_Fraud/8.4_Preventing_Recipients.aspx)

### D.3. Medicaid Managed Care Program: Overview

1. Centers for Medicare and Medicaid Services. (2018, February 1). Healthy Louisiana and CSoC Waiver. Retrieved May 2023 from [https://www.medicare.gov/Medicare-CHIP-Program-Information/By-Topics/Waivers/Downloads/LA\\_LBHP\\_LA-04.pdf](https://www.medicare.gov/Medicare-CHIP-Program-Information/By-Topics/Waivers/Downloads/LA_LBHP_LA-04.pdf)
2. Centers for Medicare and Medicaid Services. (2016). Medicaid State Plan Amendment Louisiana 16-0003. Retrieved May 2023 from <https://www.medicare.gov/State-resource-center/Medicare-State-Plan-Amendments/Downloads/LA/LA-16-0003.pdf>
3. Louisiana Department of Health. Managed Care Executed Contracts. Retrieved May 2023 from <http://ldh.la.gov/index.cfm/page/1763>
4. Louisiana Department of Health. (2019, August 5). State Announces Intent to Contract with Four Managed Care Companies for Medicaid Enrollees. Retrieved May 2023 from <http://ldh.la.gov/index.cfm/newsroom/detail/5233>
5. Louisiana Department of Health. (2020, August 21). Department of Health intends to issue a new Request for Proposals for Managed Care Organizations. Retrieved May 2023 from <https://ldh.la.gov/index.cfm/newsroom/detail/5724>
6. Louisiana Department of Health. (2021, April 1). Enrollment Trend Report. Retrieved May 2023 from [https://ldh.la.gov/assets/docs/BayouHealth/Monthly\\_Reports/2021\\_109A/109A-EnrollmentsbyHealthPlanandParish2.1April2021.pdf](https://ldh.la.gov/assets/docs/BayouHealth/Monthly_Reports/2021_109A/109A-EnrollmentsbyHealthPlanandParish2.1April2021.pdf)

### D.3. Medicaid Managed Care Program: Health Plan Characteristics

1. Amerihealth Caritas Louisiana. (2021, March). Provider Manual. Retrieved May 2023 from <http://www.amerihealthcaritasla.com/pdf/provider/resources/manual/handbook.pdf>
2. Healthy Blue. (2021, April). Provider Manual. Retrieved May 2023 from [https://providers.healthybluelouisiana.com/Documents/LALA\\_CAID\\_ProviderManual.pdf](https://providers.healthybluelouisiana.com/Documents/LALA_CAID_ProviderManual.pdf)
3. UnitedHealthcare Provider Manual. Retrieved May 2023 from <https://www.uhcprovider.com/content/dam/provider/docs/public/admin-guides/comm-plan/LA-Acute-Care-Provider-Manual.pdf>
4. Aetna Better Health of Louisiana. Provider Manual. Retrieved May 2023 from <https://www.aetnabetterhealth.com/louisiana/assets/pdf/providers/ProviderManual-LA.pdf>
5. Louisiana Healthcare Connect. (2021, March). Provider Manual. Retrieved May 2023 from [https://www.louisianahealthconnect.com/content/dam/centene/louisiana-health-connect/pdfs/medicaid-provider/LA-Healthcare\\_Connections\\_Provider\\_Manual.pdf](https://www.louisianahealthconnect.com/content/dam/centene/louisiana-health-connect/pdfs/medicaid-provider/LA-Healthcare_Connections_Provider_Manual.pdf)

## H.3. Sources

### D.3. Medicaid Managed Care Program: Behavioral Health Benefits

1. Louisiana Department of Health. Managed Care Executed Contracts. Retrieved May 2023 from <http://ldh.la.gov/index.cfm/page/1763>
2. Centers for Medicare and Medicaid Services. (2019, June 19). Healthy Louisiana OUD/SUD Demonstration. Retrieved May 2023 from <https://www.medicaid.gov/medicaid/section-1115-demo/demonstration-and-waiver-list/?entry=45424>
3. Louisiana Department of Health. (2019, December 30). Amerihealth Caritas Louisiana Contract. Retrieved May 2023 from [http://ldh.la.gov/assets/docs/BayouHealth/Contract\\_Amendments/2019Contracts/ACLA\\_Contract.pdf](http://ldh.la.gov/assets/docs/BayouHealth/Contract_Amendments/2019Contracts/ACLA_Contract.pdf)
4. Louisiana Department of Health. (2019, December 30). Aetna Better Health Contract. Retrieved May 2023 from [http://ldh.la.gov/assets/docs/BayouHealth/Contract\\_Amendments/2019Contracts/ABH\\_Contract.pdf](http://ldh.la.gov/assets/docs/BayouHealth/Contract_Amendments/2019Contracts/ABH_Contract.pdf)
5. Louisiana Department of Health. (2019, December 30). Healthy Blue Contract. Retrieved May 2023 from [http://ldh.la.gov/assets/docs/BayouHealth/Contract\\_Amendments/2019Contracts/HBL\\_Contract.pdf](http://ldh.la.gov/assets/docs/BayouHealth/Contract_Amendments/2019Contracts/HBL_Contract.pdf)
6. Louisiana Department of Health. (2019, December 30). Louisiana Healthcare Connections Contract. Retrieved May 2023 from [http://ldh.la.gov/assets/docs/BayouHealth/Contract\\_Amendments/2019Contracts/LHCC\\_Contract.pdf](http://ldh.la.gov/assets/docs/BayouHealth/Contract_Amendments/2019Contracts/LHCC_Contract.pdf)
7. Louisiana Department of Health. (2019, December 30). UnitedHealthcare of Louisiana Contract. Retrieved May 2023 from [http://ldh.la.gov/assets/docs/BayouHealth/Contract\\_Amendments/2019Contracts/UHC\\_Contract.pdf](http://ldh.la.gov/assets/docs/BayouHealth/Contract_Amendments/2019Contracts/UHC_Contract.pdf)
8. Louisiana Department of Health. (2021, March 16). State Plan Amendment #20-0015. Retrieved May 2023 from <https://www.medicaid.gov/medicaid/spa/downloads/LA-20-0015.pdf>

### D.3. Medicaid Managed Care Program: SMI Population

1. Centers for Medicare and Medicaid Services. (2018, February 1). Healthy Louisiana and CSoC Waiver. Retrieved May 2023 from [https://www.medicaid.gov/Medicaid-CHIP-Program-Information/By-Topics/Waivers/Downloads/LA\\_LBHP\\_LA-04.pdf](https://www.medicaid.gov/Medicaid-CHIP-Program-Information/By-Topics/Waivers/Downloads/LA_LBHP_LA-04.pdf)
2. Centers for Medicare and Medicaid Services. (2016). Medicaid State Plan Amendment Louisiana 16-0003. Retrieved May 2023 from <https://www.medicaid.gov/State-resource-center/Medicaid-State-Plan-Amendments/Downloads/LA/LA-16-0003.pdf>
3. OPEN MINDS. (2023). SMI Estimates.

## H.3. Sources

### D.3. Medicaid Managed Care Program: Pharmacy Benefit

1. Louisiana Department of Health (2019, January 31). Louisiana Medicaid Fee for Service (FFS) and Managed Care Organizations (MCOs) Pharmacy Implementation of the Louisiana Medicaid Single Preferred Drug List (PDL). Retrieved May 2023 from <http://www.ldh.la.gov/assets/HealthyLa/Pharmacy/LAMedicaidSinglePDL2.1.19.pdf>
2. Centers for Medicare and Medicaid Services. (2019). Medicaid State Plan Amendment Louisiana 19-017 Pharmacy SPA. Retrieved May 2023 from <https://www.medicare.gov/State-resource-center/Medicaid-State-Plan-Amendments/Downloads/LA/LA-19-0017.pdf>
3. Louisiana Department of Health. Managed Care Executed Contracts. Retrieved May 2023 from <http://ldh.la.gov/index.cfm/page/1763>
4. Louisiana Department of Health. (2021, January 1). Louisiana Medicaid Preferred Drug List (PDL)/Non-Preferred Drug List (NPDL). Retrieved May 2023 from <http://www.ldh.la.gov/assets/HealthyLa/Pharmacy/PDL.pdf>
5. Louisiana Department of Health. Preventing Fraud-Recipients. Retrieved May 2023 from [https://medicaid.alabama.gov/content/8.0\\_Fraud/8.4\\_Preventing\\_Recipients.aspx](https://medicaid.alabama.gov/content/8.0_Fraud/8.4_Preventing_Recipients.aspx)

### D.4. Medicaid Program: Care Coordination Initiatives

1. Louisiana Department of Health. Managed Care Executed Contracts. Retrieved May 2023 from <http://ldh.la.gov/index.cfm/page/1763>

### D.5. Medicaid Program: Demonstration & Care Management Waivers

1. Centers for Medicare and Medicaid Services. Demonstrations and Waivers. Retrieved May 2023 from [https://www.medicare.gov/medicaid-chip-program-information/by-topics/waivers/waivers\\_faceted.html](https://www.medicare.gov/medicaid-chip-program-information/by-topics/waivers/waivers_faceted.html)

### D.5. Medicaid Program: Section 1915 (c) HCBS Waivers

1. Centers for Medicare and Medicaid Services. Demonstrations and Waivers. Retrieved May 2023 from [https://www.medicare.gov/medicaid-chip-program-information/by-topics/waivers/waivers\\_faceted.html](https://www.medicare.gov/medicaid-chip-program-information/by-topics/waivers/waivers_faceted.html)

### D.6. Medicaid Program: New Initiatives

1. Louisiana Department of Health. (2019, May). Medicaid Eligibility Reform: Reasonable Compatibility & Tax Data. Retrieved May 2023 from [http://ldh.la.gov/assets/docs/LegisReports/2019\\_05MERReport.pdf](http://ldh.la.gov/assets/docs/LegisReports/2019_05MERReport.pdf)
2. Louisiana Department of Health. (2019, December 20). LDH Receives Federal Grant To Combat Maternal Opioid Misuse. Retrieved May 2023 from <http://ldh.la.gov/index.cfm/newsroom/detail/5379>

## H.3. Sources

### E.1. Dual Eligible Medicaid Financing & Service Delivery System

1. Centers for Medicare and Medicaid Services. (2022, December). Plan Directory for MA, Cost, PACE, and Demo Organizations. Retrieved May 2023 from <https://www.cms.gov/Research-Statistics-Data-and-Systems/Statistics-Trends-and-Reports/MCRAdvPartDENrolData/MA-Plan-Directory.html>
2. Centers for Medicare and Medicaid Services. (2022, December). Special Needs Plan (SNP) Data. Retrieved May 2023 from <https://www.cms.gov/Research-Statistics-Data-and-Systems/Statistics-Trends-and-Reports/MCRAdvPartDENrolData/Special-Needs-Plan-SNP-Data.html>

### E.2. Largest Medicare Health Plans By Estimated SMI Enrollment

1. Centers for Medicare and Medicaid Services. (2022, December). Plan Directory for MA, Cost, PACE, and Demo Organizations. Retrieved May 2023 from <https://www.cms.gov/Research-Statistics-Data-and-Systems/Statistics-Trends-and-Reports/MCRAdvPartDENrolData/MA-Plan-Directory.html>
2. Centers for Medicare and Medicaid Services. (2022, December). Special Needs Plan (SNP) Data. Retrieved May 2023 from <https://www.cms.gov/Research-Statistics-Data-and-Systems/Statistics-Trends-and-Reports/MCRAdvPartDENrolData/Special-Needs-Plan-SNP-Data.html>

### E.3. Dual Eligible Medicaid Financing & Delivery System: Overview

1. Centers for Medicare and Medicaid Services. (2022, December). Medicare-Medicaid Enrollee State and County Enrollment Snapshots. Retrieved May 2023 from <https://www.cms.gov/Medicare-Medicaid-Coordination/Medicare-and-Medicaid-Coordination/Medicare-Medicaid-Coordination-Office/Analytics.html>
2. Louisiana Department of Health. (2021). Medicaid Waiver Services. Retrieved May 2023 from <https://ldh.la.gov/index.cfm/page/1555>

### E.4. Dual Eligible Medicaid Financing & Delivery System: New Initiatives

1. Centers for Medicare and Medicaid Services. (2021, February 25). Financial Alignment Initiative (FAI). Retrieved May 2023 from <https://www.cms.gov/Medicare-Medicaid-Coordination/Medicare-and-Medicaid-Coordination/Medicare-Medicaid-Coordination-Office/FinancialAlignmentInitiative/FinancialModelstoSupportStatesEffortsinCareCoordination.html>

### F.1. LTSS Financing & Service Delivery

1. Centers for Medicare and Medicaid Services. (2018, August 28). Louisiana Bayou Health and Coordinated System of Care (LA-04). Retrieved May 2023 from <https://www.medicaid.gov/medicaid/section-1115-demo/demonstration-and-waiver-list/?entry=24334>
2. Centers for Medicare and Medicaid Services. (2016). Medicaid State Plan Amendment Louisiana 16-0003. Retrieved May 2023 from <https://www.medicaid.gov/State-resource-center/Medicaid-State-Plan-Amendments/Downloads/LA/LA-16-0003.pdf>

## H.3. Sources

### F.1. LTSS Service Delivery System Enrollment By Eligibility Group

1. Centers for Medicare and Medicaid Services. (2018, August 28). Louisiana Bayou Health and Coordinated System of Care (LA-04). Retrieved May 2023 from <https://www.medicaid.gov/medicaid/section-1115-demo/demonstration-and-waiver-list/?entry=24334>
2. Centers for Medicare and Medicaid Services. (2016). Medicaid State Plan Amendment Louisiana 16-0003. Retrieved May 2023 from <https://www.medicaid.gov/State-resource-center/Medicaid-State-Plan-Amendments/Downloads/LA/LA-16-0003.pdf>

### F.2. LTSS Financing & Service Delivery System: Overview

1. Centers for Medicare and Medicaid Services. (2018, August 28). Louisiana Bayou Health and Coordinated System of Care (LA-04). Retrieved May 2023 from <https://www.medicaid.gov/medicaid/section-1115-demo/demonstration-and-waiver-list/?entry=24334>
2. Centers for Medicare and Medicaid Services. (2016). Medicaid State Plan Amendment Louisiana 16-0003. Retrieved May 2023 from <https://www.medicaid.gov/State-resource-center/Medicaid-State-Plan-Amendments/Downloads/LA/LA-16-0003.pdf>

### F.3. LTSS Health Plan Characteristics

1. Centers for Medicare and Medicaid Services. (2018, August 28). Louisiana Bayou Health and Coordinated System of Care (LA-04). Retrieved May 2023 from <https://www.medicaid.gov/medicaid/section-1115-demo/demonstration-and-waiver-list/?entry=24334>
2. Centers for Medicare and Medicaid Services. (2016). Medicaid State Plan Amendment Louisiana 16-0003. Retrieved May 2023 from <https://www.medicaid.gov/State-resource-center/Medicaid-State-Plan-Amendments/Downloads/LA/LA-16-0003.pdf>

### F.4. LTSS Program: Health Benefits

1. Centers for Medicare and Medicaid Services. (2018, August 28). Louisiana Bayou Health and Coordinated System of Care (LA-04). Retrieved May 2023 from <https://www.medicaid.gov/medicaid/section-1115-demo/demonstration-and-waiver-list/?entry=24334>
2. Centers for Medicare and Medicaid Services. (2016). Medicaid State Plan Amendment Louisiana 16-0003. Retrieved May 2023 from <https://www.medicaid.gov/State-resource-center/Medicaid-State-Plan-Amendments/Downloads/LA/LA-16-0003.pdf>

### F.4. LTSS Program: New Initiatives

1. Centers for Medicare and Medicaid Services. (2018, August 28). Louisiana Bayou Health and Coordinated System of Care (LA-04). Retrieved May 2023 from <https://www.medicaid.gov/medicaid/section-1115-demo/demonstration-and-waiver-list/?entry=24334>
2. Centers for Medicare and Medicaid Services. (2016). Medicaid State Plan Amendment Louisiana 16-0003. Retrieved May 2023 from <https://www.medicaid.gov/State-resource-center/Medicaid-State-Plan-Amendments/Downloads/LA/LA-16-0003.pdf>

# H.3. Sources

## G.1. Office Of Behavioral Health: Organization Chart

1. Louisiana Department of Health. (2021, March 11). Louisiana Department of Health Organizational Chart. Retrieved May 2023 from <http://ldh.la.gov/assets/docs/OrgCharts/LDHOrgChart.pdf>
2. Louisiana Department of Health. (2021). Office of Behavioral Health High-Level Organizational Chart. Retrieved May 2023 from <http://ldh.la.gov/assets/docs/OrgCharts/OBHOrgchart.pdf>

## G.1. Office Of Behavioral Health: Key Leadership

1. Louisiana Department of Health. (2021, March 11). Louisiana Department of Health Organizational Chart. Retrieved May 2023 from <http://ldh.la.gov/assets/docs/OrgCharts/LDHOrgChart.pdf>
2. Louisiana Department of Health. (2021). Office of Behavioral Health High-Level Organizational Chart. Retrieved May 2023 from <http://ldh.la.gov/assets/docs/OrgCharts/OBHOrgchart.pdf>

## G.2. Office Of Behavioral Health: Spending

1. Louisiana Department of Health (2022) Department of Health Budget Summary FY 2022-23. Retrieved from [https://www.doa.la.gov/media/3hrj1z3f/09a\\_louisiana\\_department\\_of\\_health.pdf](https://www.doa.la.gov/media/3hrj1z3f/09a_louisiana_department_of_health.pdf)

## G.2. Office Of Behavioral Health: Spending Over Time

1. Louisiana Department of Health (2022) Department of Health Budget Summary FY 2022-23. Retrieved from [https://www.doa.la.gov/media/3hrj1z3f/09a\\_louisiana\\_department\\_of\\_health.pdf](https://www.doa.la.gov/media/3hrj1z3f/09a_louisiana_department_of_health.pdf)
2. Louisiana Department of Health. (2021). Louisiana Department of Health Budget Summary FY 2021. Retrieved May 2023 from [https://www.doa.la.gov/media/wtjpgvjo/09a\\_louisiana\\_department\\_of\\_health.pdf](https://www.doa.la.gov/media/wtjpgvjo/09a_louisiana_department_of_health.pdf)
3. Louisiana Department of Health. (2020). Louisiana Department of Health Budget Summary FY 2020. Retrieved May 2023 from [https://www.doa.la.gov/opb/pub/FY20/SupportingDocument/09A\\_Louisiana\\_Department\\_of\\_Health.pdf](https://www.doa.la.gov/opb/pub/FY20/SupportingDocument/09A_Louisiana_Department_of_Health.pdf)
4. Louisiana Department of Administration. FY 2018 Appropriations Accountability Portal Document. Retrieved May 2023 from [https://www.doa.la.gov/opb/faf/FY18/AP\\_DOCUMENT.pdf](https://www.doa.la.gov/opb/faf/FY18/AP_DOCUMENT.pdf)
5. Louisiana Department of Administration. FY 2017 Appropriations Accountability Portal Document. Retrieved May 2023 from [https://www.doa.la.gov/opb/faf/FY17/AP\\_DOCUMENT.pdf](https://www.doa.la.gov/opb/faf/FY17/AP_DOCUMENT.pdf)
6. Louisiana Department of Administration. FY 2016 Appropriations Accountability Portal Document. Retrieved May 2023 from [https://www.doa.la.gov/opb/faf/FY16/AP\\_DOCUMENT.pdf](https://www.doa.la.gov/opb/faf/FY16/AP_DOCUMENT.pdf)

# H.3. Sources

## G.3. State Psychiatric Institutions

1. Louisiana Department of Health (2022) Department of Health Budget Summary FY 2022-23. Retrieved from [https://www.doa.la.gov/media/3hrj1z3f/09a\\_louisiana\\_department\\_of\\_health.pdf](https://www.doa.la.gov/media/3hrj1z3f/09a_louisiana_department_of_health.pdf)

## G.4. State Behavioral Health Safety-Net Delivery System

1. Louisiana Department of Health. (2020). FY 2020-2021 Combined Behavioral Health Assessment and Plan. Retrieved May 2023 from [http://ldh.la.gov/assets/csoc/block\\_grant/FY20-21BGApplicationFinal-revision.request.updates.pdf](http://ldh.la.gov/assets/csoc/block_grant/FY20-21BGApplicationFinal-revision.request.updates.pdf)
2. Louisiana Department of Health. Office of Behavioral Health Local Governing Entities (LGEs). Retrieved May 2023 from [http://ldh.la.gov/assets/docs/OrgCharts/LDH\\_OBH\\_RgnlDistrictMap.pdf](http://ldh.la.gov/assets/docs/OrgCharts/LDH_OBH_RgnlDistrictMap.pdf)
3. Louisiana Department of Health. Local Governing Entity (LGE) Regional Offices. Retrieved May 2023 from <http://ldh.la.gov/index.cfm/directory/category/100>

## G.4. Behavioral Health Safety-Net Delivery System: LGE Regions

1. Louisiana Department of Health. Office of Behavioral Health Local Governing Entities (LGEs). Retrieved May 2023 from [http://ldh.la.gov/assets/docs/OrgCharts/LDH\\_OBH\\_RgnlDistrictMap.pdf](http://ldh.la.gov/assets/docs/OrgCharts/LDH_OBH_RgnlDistrictMap.pdf)
2. Louisiana Department of Health. Local Governing Entity (LGE) Regional Offices. Retrieved May 2023 from <http://ldh.la.gov/index.cfm/directory/category/100>